

## National Trust Cottages Accessibility Guide Template (October 2023)

Farm Cottage  
Stackpole Quay  
Pembroke  
Pembrokeshire  
SA71 5LS

Ref: 013008



(Photo credit: Mike Henton)

### Introduction

- Farm Cottage is situated near Pembroke on the Stackpole Estate which for many centuries was home to the Earls of Cawdor.
- One of a pair of once whitewashed Welsh farmhouses, this traditional two storey building sits adjacent to a courtyard containing converted stone byres and a former Dairy.
- Situated in one of the country's loveliest national parks, Stackpole has the most remarkable Freshwater lakes, covered with water lilies in the summer.

### Pre-Arrival

- See the main webpage for booking and location details.
- Please contact us prior to booking if you have any specific access requirements.
- Directions provided with booking

## Arrival & Parking Facilities

A car park for all eight cottages is situated approx. 50 m from the cottages. It is not possible to park in the courtyard. From the car park access is either over a small slate slab or down three stone and slate steps (no handrail), each 19 cm high. Once out of the car park the path is gravel chippings.



## Getting in (and out) of the cottage

- Entrance through latched gate into garden
- Doorways minimum 71 cm wide

## Getting around the cottage

The Cottage is arranged as follows:

### Ground Floor:

Entrance Hall with stairs and door to:

- Open plan kitchen, dining, living area
- Slate Floor with rug
- Wood burning stove
- Two-seater sofa, seat height 48cm and 2 armchairs, seats 45cm high
- Wooden dining chairs and wooden bench, seats 46cm high and dining table has 61cm clear space underneath
- Electric cooker, fridge/freezer, dishwasher, microwave, toaster, and cordless kettle
- Worktop 91 cm high



(Photo credit: Mike Henton)

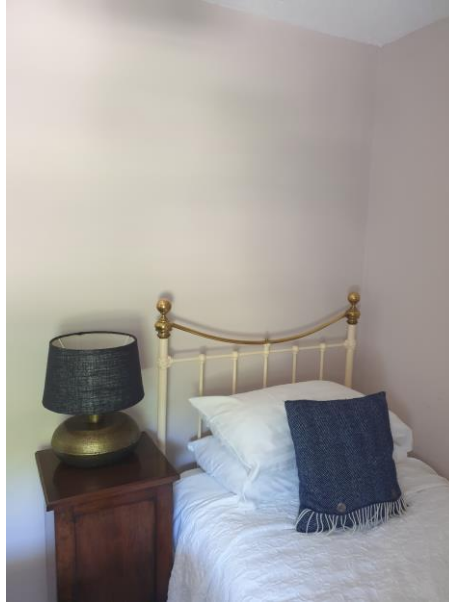
## Stairs



- 18-22 cm high, 6 steps, 90 degree turn, 7 steps

## First Floor:

- Bedrooms and landing carpeted, bathroom vinyl flooring
- One Double bedroom with metal framed bed 140cm wide x 72cm high x 197 cm long. Firm mattress.
- Bedside lamp both sides
- Two single bedrooms front, bed 90cm wide x 60cm high x 186cm long. Bedside lamp
- Back bedroom, bed 90cm wide x 65cm high x 186cm long beds. Bedside lamp



## Bathroom

- WC, basin and bath with shower over
- The WC is 39cm high, bath 55cm high, basin 81cm high



(Photo credit: Mike Henton)

## Telephone/Other Rooms

- There is a shared laundry situated between the cottage and the parking area, with washing
- machine and tumble drier. A drying area is situated at the far end of the car park. There is a
- payphone in the laundry for outgoing calls only. NB There is no mobile signal down at the
- cottages



## Garden

- There is an enclosed garden to the front of the cottage with picnic table.
- **Additional Information**
- Assistance dogs are welcome at all our cottages
- In the event of a fire, it is the responsibility of the guests to evacuate themselves.  
Vibrating
- fire/smoke detectors are available if requested at time of booking. Please contact us if you
- have any other specific access requirements in this respect.

## Facilities at all cottages

The National Trust aims to expand the list of accessible /equipment/items available at each cottage and these may include

- Cordless kettle
- Hollowfibre bedding
- Chair with armrests
- Good reading light
- Large handle vegetable peeler
- Easy tin opener
- Non-slip mat for bath/shower
- Non-slip place mat
- Easy jar opener
- Information in alternative formats (on request)

Please note that we cannot guarantee that all items will be available at the time of your visit. Please enquire at the time of booking regarding any particular requests.

## Specialist equipment

Other specialist equipment such as wheelchairs, bath seats, toilet frames etc may be available for loan or purchase from the local Red Cross loan centre. Please check this out before booking the Cottage and contact us if you require further information.

<http://www.redcross.org.uk/standard.asp?id=89425>

## Future Plans to improve Access to National Trust Holiday Accommodation

- We are currently in the process of writing accessibility guides for all our holiday cottages and bunkhouses and improving access over time for all our guests. All feedback is very helpful in informing us of ways in which we can improve access. We welcome any comments or ideas from you about access at this cottage and thank you for taking the time to do this. Please do this in the most convenient way for you. See contact details below or information on website.

## About the Accessibility Guide

- This Accessibility Guide is intended to provide key information about the accommodation that may be particularly relevant to guests with disabilities. Please contact us prior to booking if you would like information that is more specific and we will be happy to oblige.

Email: [cottages@nationaltrust.org.uk](mailto:cottages@nationaltrust.org.uk)

Phone: 0344 8002070

## Access for All at the National Trust

- The Access for All office works to improve access at all National Trust accommodation and properties. The office welcomes comments and ideas on improving access.

Phone: 01793 818531

Email: [accessforall@nationaltrust.org.uk](mailto:accessforall@nationaltrust.org.uk)

Date 3<sup>rd</sup> October 2023