

National Trust

National Trust Cottages

Accessibility Guide

1 Sternsmill Cottage (018003)
Dudmaston Estate
Quatt
Shropshire
WV15 6QN



Introduction

- This is a charming semi-detached 19th century cottage with accommodation on three floors.
- It is set on farm land, with the river seven running just outside it, and the seven valley railway just across the fields, which can be seen from the cottage.
- The cottage does have a rock surface to the back of the property, but it is at a distance that you still get sun through the back windows.

The Cottage is arranged as follows:

Ground Floor:

- Sitting / dining room and kitchen

First Floor:

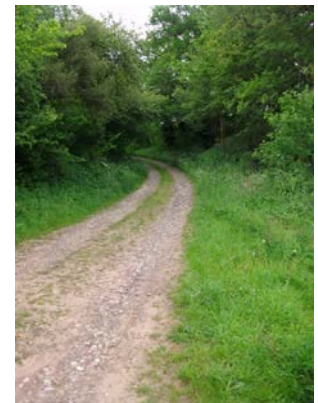
- Double bedroom and bathroom

Second Floor:

- Twin bedroom

Pre-Arrival

- See the main webpage for booking and location details.
- Please contact us prior to booking if you have any specific access requirements.
- Directions provided with booking
- Access is through a working farm, therefore please drive slowly along the track, and it is not recommended for low slung vehicles.



Arrival & Parking Facilities

- Access from the main road is through Lodge Farm which is a private farm track. The track is rough and can be steep in places. It is approximately 0.5 miles long.
- There is parking directly outside the cottage for two cars.
- There is a small picket fence at the front of the property; there is a gate 1200mm wide from the parking area onto a slabbed pathway which is level.



- Around the cottage is all on a fairly flat level.
- The key safe is located by the back door, and then you will need to return to the front door to access. The key safe is eight meters from the parking area, and the front door is four meters.



Getting in (and out) of the cottage

- The front door leads in to the sitting / dining room and has a step up of 190mm and an opening width of 750mm.
- The back door goes from the kitchen and has a step to the outside of 180mm and an opening width of 670mm

Getting around the cottage

Ground floor:

- From the sitting / dining room, there is a door to the kitchen with an opening of 760mm
- There is a further door to a storage cupboard of 730mm in the kitchen.
- All the ground floor is quarry tiled but with loose rugs on top.
- There is a door in the sitting room to the staircase; this is 750mm wide with a step 190mm up to a small flat landing. The stairs then go up straight from this landing.
- The stairs are wooden, there is now a carpet runner on the steps, there are 10 steps to another landing, the stairs are steep with the highest step being 230mm.
- There are hand rails on both sides of the stairs.



First floor:

- From the small landing there is a step up 200mm into the double bedroom. The door opening is 720mm and the flooring is wooden floor boards, with loose rugs.
- Again from the small landing there is another step up



190mm to a further landing.

- There is a door from this 730mm wide into the bathroom, the bathroom has vinyl flooring.
- There is a further door way from the landing to the upper staircase, the opening and width up the staircase is 590mm wide.
- The staircase is steep and goes up in a U shape; there are four steps with a height of 220mm on to a landing step 770mm wide. There is another step up 220mm to another landing step 730mm wide; this then turns on to a further six steps with a height of 220mm each to the second floor.
- There is a banister in the middle of the U shaped staircase and a hand rail on the left of both sets of stairs.



Second floor:

- The staircase leads directly to the twin bedroom; this has wooden floorboards with loose rugs.

Sitting / Dining Room

- Two sofa's with a seat height of 470mm
- Television with inbuilt DVD player is provided.
- Dining table is a leaf table that opens out. The table is 750mm high.
- There are four dining chairs, they all have back rests and have a seat height of 460mm.



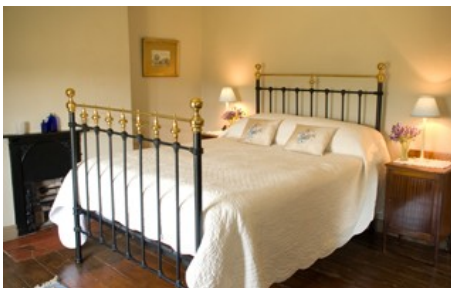
Kitchen

- Height of worktop is 930mm.
- There is an electric cooker.
- Microwave, fridge with ice box, washer dryer machine, cordless kettle and toaster provided.



Bathroom

- WC, basin and bath with electric shower over it.
- The WC is 430mm high with standard low cistern flush
- The sink is 830mm high with standard separate turn taps for hot and cold water
- The bath is 530mm high from the floor, it is 1510mm long, 490mm wide, and the depth is 400mm. The bath has standard separate turn taps for hot and cold water.



Double Bedroom

- Double bed with 1500mm (5ft) wide mattress
- Bed height 720mm



Twin Bedroom

- Two single beds with 900mm (3ft) wide mattress
- Bed heights of 660mm
- The room is a large size allowing plenty of room around both beds

Garden

- There is patio area at the back of the property where the back door leads out to.
- There is an enclosed grassed area outside the front door which is fairly level.
- Outside table and chairs with arms provided with a table height of 700mm and a seat height of 370mm



Additional Information

- Assistance dogs are welcome at all our cottages
- In the event of a fire, it is the responsibility of the guests to evacuate themselves. Vibrating fire/smoke detectors are available if requested at time of booking. Please contact us if you have any other specific access requirements in this respect.

Facilities at all cottages

The National Trust aims to expand the list of accessible /equipment/items available at each cottage and these may include

- Cordless kettle
- Hollow fibre bedding
- Good reading light
- Non-slip mat for bath/shower
- Non-slip place mat
- Information in alternative formats (on request)

Please note that we cannot guarantee that all items will be available at the time of your visit. Please enquire at the time of booking regarding any particular requests.

Specialist equipment

Other specialist equipment such as wheelchairs, bath seats, toilet frames etc may be available for loan or purchase from the local Red Cross loan centre. Please check this out before booking the Cottage and contact us if you require further information.

<http://www.redcross.org.uk/standard.asp?id=89425>

Future Plans to improve Access to NT Holiday Cottages

- We are currently in the process of writing accessibility guides for all our holiday cottages and improving access over time for all our guests. All feedback is very helpful in informing us of ways in which we can improve access to all our cottages. We welcome any comments or ideas from you about access at this cottage and thank you for taking the time to do this. Please do this in the most convenient way for you. See contact details below or information on website.

About the Accessibility Guide

- This Accessibility guide is intended to provide key information about the cottage that may be particularly relevant to guests with disabilities. Please contact us prior to booking if you would like information that is more specific and we will be happy to oblige.

Email: cottages@nationaltrust.org.uk

Phone: 0344 8002070

Access for All at the National Trust

- The Access for All office works to improve access at all National Trust cottages and properties. The office welcomes comments and ideas on improving access.
Phone: 01793 818531
Email: accessforall@nationaltrust.org.uk

Date: August 2018