

2 Currendon Cottage
Studland
Dorset
BH19 3AB

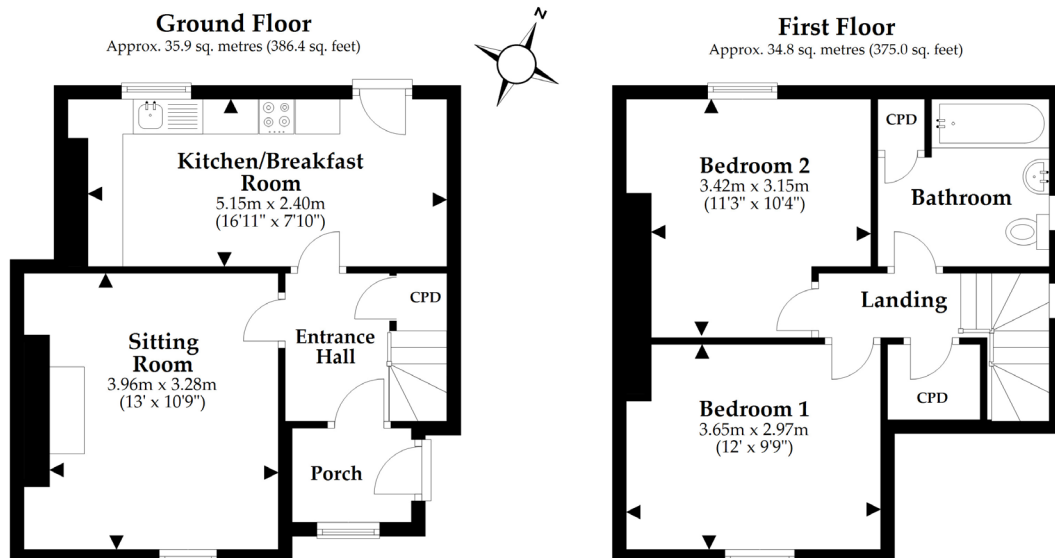
Ref: 003010
Sleeps 4 + cot: One double, one twin



Introduction

- The cottage is semi-detached with a level gravel drive
- The cottage can accommodate four guests plus a cot
- The accommodation is on two levels. The ground floor has a kitchen/diner, lounge and a hall with stairs to the first floor where from a small landing there is access to a double bedroom, a twin bedroom and a bathroom.
- The cottage has night storage heaters and an electric fire in the sitting room
- There is a garden with are wonderful views towards Studland
- External laundry facilities are in an outbuilding and are shared by both cottages
- There is a golf course located close by

Floorplan



Total area: approx. 70.7 sq. metres (761.4 sq. feet)

This plan is not to scale and it is for general guidance only. LJT Surveying Ringwood

Pre-Arrival

- See the main webpage for booking and location details
- Please contact us prior to booking if you have any specific access requirements
- Directions provided with booking
- Bring a torch if arriving in the dark as there are no streetlights

Approach, arrival and parking facilities

- The cottage is located approximately 1.5 miles from Studland and is approached down a quiet road that leads to Swanage
- There is a gate to the property which remains open. Parking is directly in front of the cottages on a gravel drive. There is space for two cars for each of the cottages.
- The front door is the main point of entry and opens into the central hallway. The key is in the “key safe” on the left wall next to the front door at a height of 150cm.
- Front door width is 76cm, the height is 195cm. The door lock is at a height of 110cm.



Getting around the cottage

- Ground floor: The front door opens into the kitchen. There is a door from the kitchen into the main hall. The main hall has a door into the lounge and another into the rear entrance hall then the garden. Stairs lead to the first floor.

- First floor: The stairs in the main hall led to a landing from which all the bedrooms and the bathroom are accessed.

Kitchen and dining area

- Vinyl flooring throughout
- There is a window which overlooks the front drive
- Height of the kitchen worktop is 91cm
- There are wall and floor cabinets
- The dining table has a knee clearance of 67cm and a height of 78cm. There are four chairs with a seat height of 46cm
- There is a radiator located on the internal wall
- There are two spotlight strips, each has four spotlights
- Lever mixed tap



Main hall and stairs

- The door from the kitchen leads into the main hall is at a width of 64cm and a height of 190cm
- When you enter the hall from the kitchen there is a door on the right which opens into the lounge. This door is at a width of 63cm, and the height is 191cm.

- There is a door directly opposite that leads to a small rear entrance hall (and then the garden). The doorway width is 78cm, the height is 188cm.
- There is a radiator located on the interior lounge wall
- Carpeted flooring throughout
- Central ceiling light
- There are 13 carpeted stairs leading to the first floor with a handrail on the right (ascending) with two spiral turns, handrail on left side for four steps only.
- Each step is a minimum of 77cm wide and a maximum of 19cm high. They are narrow in depth and some slope downwards. Care should be taken when ascending and descending



Lounge

- Carpeted throughout
- There are two sofas both with seat heights of 46cm
- Central ceiling light and two standard lamps
- There is a window looking out over the garden, fields and in the distance the sea
- There is a radiator located on the internal hall wall
- There is a TV
- The fireplace has a wood burning stove



Double bedroom

- Doorway width 69cm and a height of 195cm
- Double bed 5'150cm wide x 6'4"/195cm length x 25"/63cm high
- Clearance under the bed is 4cm
- There is a ceiling light and two bedside lamps
- There are two bedside cabinets and a chest of drawers
- A window with views over the garden, fields and in the distance the sea
- The radiator is located on an internal wall
- The floor is carpeted
- There is a chair with a seat height of 40cm

Twin Bedroom

- Doorway width 70cm and a height of 195cm
- Two single beds at a width of 3'92cm x 6'4"/195cm in length x 24"/62cm height
- Clearance under the beds is 4cm
- Distance between beds 37cm
- A ceiling light and two bedside lamps
- Chest of drawers and a bedside table
- Window with view of the allotments
- Radiator on internal wall
- The floor is carpeted
- Chair with a seat height of 43cm



Bathroom

- Doorway width 89cm and a height of 195cm
- Vinyl flooring
- There is one window with obscured glass
- Pillar taps
- The toilet height is 39cm, the sink height is 82cm
- There is a shower attachment over the bath, the side of the bath is 56cm high
- There is a central ceiling light and a spotlight over the vanity mirror
- Heated towel rail



Rear Entrance Hall and Garden

- The garden is shared with your neighbour and is accessed through the rear entrance hall
- The doorway is 77cm wide and 196cm high
- The rear entrance hall has a central ceiling light and a tiled floor
- There is one step down to the garden at height of 15cm
- The garden is mostly paths and lawn and has views towards Studland
- The grass and paths are uneven and slope



Laundry room

- The laundry room is located next to the front door. It is shared with Currendon 1 cottage
- There is a washing machine and separate tumble dryer
- The doorway is 69cm wide and 180cm high
- Stone flooring through out

Additional Information

- Dogs are allowed at this cottage
- In the event of a fire, it is the responsibility of the guest to evacuate themselves. Vibrating fire/smoke detectors are available at the time of booking. Please contact us if you have any specific requirements in this respect.

Facilities at all cottages

The National Trust aims to expand the list of accessible /equipment/items available at each cottage and these may include

- Cordless kettle
- Chair with armrests
- Reading light
- Large handle vegetable peeler
- Easy tin opener
- Non-slip mat for bath/shower

- Information in alternative formats (on request)

Please note that we cannot guarantee that all items will be available at the time of your visit. Please enquire at the time of booking regarding any specific requests.

Specialist equipment

Specialist equipment such as wheelchairs, may be available for loan or purchase from the local Red Cross loan centre. Please check the link below and contact us if you require further information.

[Hire or borrow a wheelchair | British Red Cross](#)

Plan to improve access

- We are currently in the process of writing accessibility guides for all our holiday cottages with the aim to improve access over time for all our guests. All feedback is very helpful and we welcome any comments or ideas from you about access at this cottage. Please do this in the most convenient way for you, see contact details below or information on website. Thank you for assisting us with our improvements.

About the Accessibility Guide

- This Accessibility Guide is intended to provide key information about the accommodation that may be particularly relevant to guests with disabilities. Please contact us prior to booking if you would like information that is more specific to your needs. We will be happy to help.
Email: cottages@nationaltrust.org.uk
Phone: 0344 8002070

Access for all

- The National Trust Access for All office works to improve access at our accommodation and properties. The office welcomes comments and ideas on improving access.
Phone: 01793 818531
Email: accessforall@nationaltrust.org.uk

March 2022