

National Trust

National Trust Cottages Accessibility Guide

Cottage name: Cromer Lodge

Address Felbrigg Hall, Cromer Road, Felbrigg Norwich NR11 8PP

Ref: 011020

Introduction

Cromer Lodge is a quirky cottage, part of the former gate lodge to Felbrigg Hall. The property was built in 1841 in a Jacobean style of architecture. It benefits from secluded garden surrounded by woodland and an open fire in the lounge.



The Cottage is arranged as follows:

Pre-Arrival

- See main webpage for booking and location details
- Please contact the Contact Centre on 0844 8002070 prior to booking if you have any queries or specific access requirements
- Directions are provided with booking

Approach

- The Cottage is located at the main entrance to Felbrigg Hall Estate on the left of the driveway.

Arrival & Parking Facilities

- Immediately turn left upon entering the park down a track (signposted Mustard Pot) and then immediately left again
- There is parking for up to 2 cars on the gravelled area on the approach to the cottage
- There is a key safe holding the key for access to the left of the entrance doorway

Getting in (and out) of the cottage

- The main entrance to the cottage is at the rear by the parking area.
- There are three steps into the Cottage
- Step 1 is 100mm height, step 2 is 70mm height and step 3 is 150mm height
- There is a threshold step down into the kitchen 100mm height
- The entrance doorway is 900mm wide
- Key safe to the left of the entrance doorway on the outside wall height 1550mm to centre of unit
- Main door leads into the kitchen with the stairs to the left



Getting around the cottage

Ground Floor

- Door to the sitting room is located from the kitchen to the right side of entry door

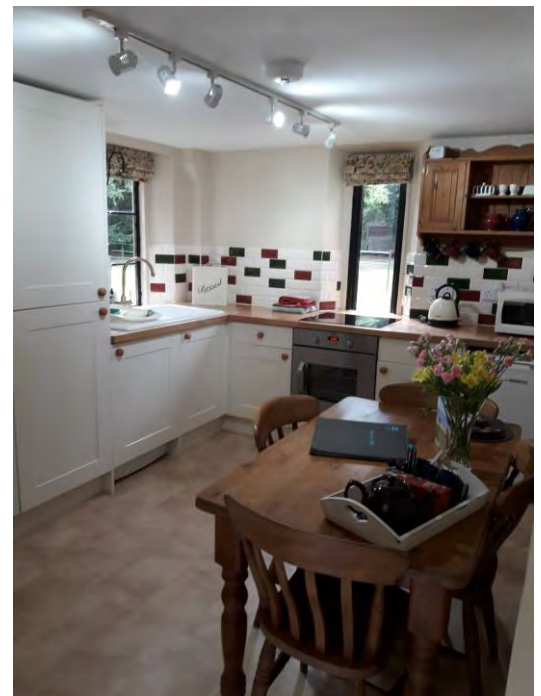


Sitting Room

- Doorway is 700mm wide with a small step down into the lounge of 50mm
- The flooring in the sitting room is Pamment tiles with a rug
- There are two sofas both with seat height of 500mm
- Open fire with fireguard
- Cabinet with Flat screen Television with remote control and dvd player
- Blinds to windows and easy close curtains
- Wooden cabinet (games and books) and telephone and wifi box
- Small side table
- Natural lighting is good
- Two sets of wall lights and a standard lamp

Diner/kitchen

- Leading from entry doorway the kitchen has vinyl flooring
- Pine kitchen table height 760mm
- 4 chairs 460mm height
- Good circulation space
- Height of worktop throughout is 900mm
- Spotlights to the ceiling
- Under counter fridge
- Rangemaster ceramic sink with drainer
- Zanussi integrated under counter electric oven with combined grill
- Halogen hob



- Microwave oven
- Cordless kettle
- Toaster
- Washing machine located in base kitchen cupboard
- Portable cd/radio
- Blinds to windows

Door to caretaking cupboard/storage area 570mm wide with threshold step of 90mm

First floor

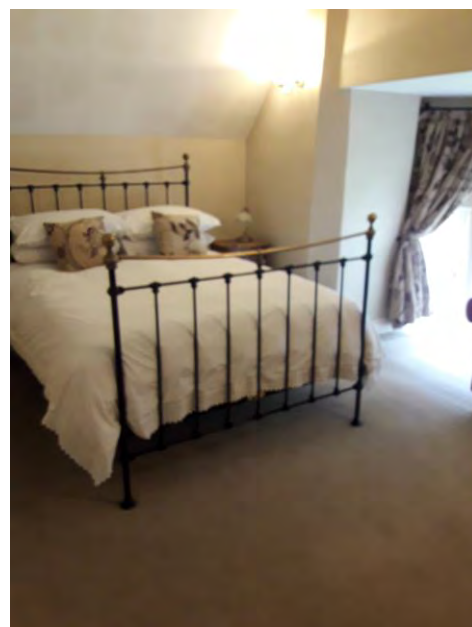
Doorway to stairs to first floor 620mm wide



- Stairs turn to the right up to first floor
- Each stair is 200mm height
- Electricity meter is housed in a box to top of the stairs
- 2 windows on stairwell
- Landing area with door to bedroom and bathroom
- Central heating/water controls to left of master bedroom

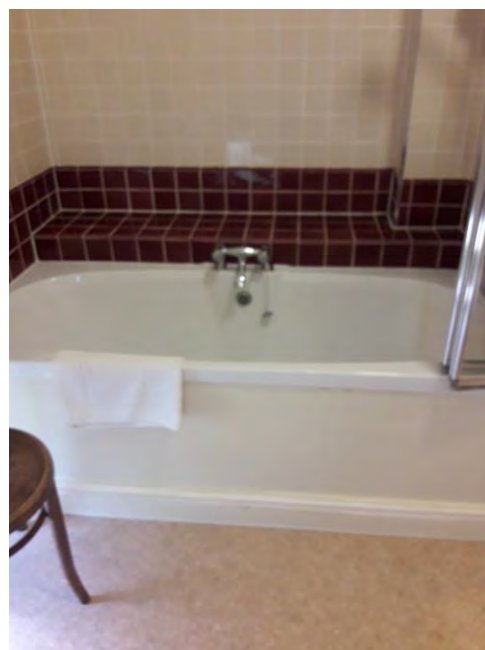
Bedroom

- Doorway to bedroom 700mm width with threshold step of 100mm
- Vaulted ceiling
- Metal framed bed 620mm height, 1350mm width and 2010mm length
- Small occasional chair
- 2 bedside tables 600mm height with bedside lamps
- Wardrobe with 2 drawers
- Chest of drawers
- Large bay window with blinds and easy close curtains



Bathroom

- Doorway to bathroom 700mm wide no threshold
- Vinyl flooring
- Double aspect windows
- Electric shower over the bath with folding shower screen
- 1400mm to centre of shower control from within the bath and lowest height of shower head is 1500mm
- Bath with centre taps 580mm from floor and 440mm deep
- Close coupled wc 410mm height of seat
- 270mm distance of wc to radiator
- Wash basin 830mm height
- Wooden chair
- Towel rack
- Pull cord light 1400mm height from floor
- Pull cord for shower 1960 height from floor
- Pull cord for extractor fan 1960 height



Garden



- Not enclosed but surrounded by woodland area to three sides

Additional Information

Facilities at all cottages

The National Trust aims to expand the list of accessible /equipment/items available at each cottage and these may include

- Cordless kettle
- Hollowfibre bedding
- Chair with armrests
- Good reading light
- Large handle vegetable peeler
- Easy tin opener
- Non-slip mat for bath/shower
- Non-slip place mat
- Easy jar opener

- Information in alternative formats (on request)

Please note that we cannot guarantee that all items will be available at the time of your visit. Please enquire at the time of booking regarding any particular requests.

Specialist equipment

Other specialist equipment such as wheelchairs, bath seats, toilet frames etc may be available for loan or purchase from the local Red Cross loan centre. Please check this out before booking the Cottage and contact us if you require further information.

<http://www.redcross.org.uk/standard.asp?id=89425>

Future Plans to improve Access to National Trust Holiday Accommodation

- We are currently in the process of writing accessibility guides for all our holiday cottages and bunkhouses and improving access over time for all our guests. All feedback is very helpful in informing us of ways in which we can improve access. We welcome any comments or ideas from you about access at this cottage and thank you for taking the time to do this. Please do this in the most convenient way for you. See contact details below or information on website.

About the Accessibility Guide

- This Accessibility Guide is intended to provide key information about the accommodation that may be particularly relevant to guests with disabilities. Please contact us prior to booking if you would like information that is more specific and we will be happy to oblige.
Email: cottages@nationaltrust.org.uk
Phone: 0344 8002070

Access for All at the National Trust

- The Access for All office works to improve access at all National Trust accommodation and properties. The office welcomes comments and ideas on improving access.
Phone: 01793 818531
Email: accessforall@nationaltrust.org.uk

Date 16/09/2022