

## **National Trust 1 Compton Farm Cottage Accessibility Guide**

1 Compton Farm Cottage

Brook

Nr Newport

PO30 4HF

Ref 0010019

Sleeps 4 + Cot

No Dogs



## **Introduction**

- One of a pair of 2 storey semi-detached farm workers cottages, set adjacent to a working farm and a short walk to Compton beach, famed for its fossils and dinosaur foot casts. Far reaching views of down land, sea views and dramatic cliffs
- 1 Compton Farm Cottage sleeps 4 plus cot
- Porch covered front door opens into a small lobby with kitchen, bathroom, and utility to the left. To the right the sitting/dining room with stairs to the first floor
- First floor comprises a landing leading to a twin room and a double bedroom and a small area with books, games and DVDs
- Heating is provided by wall mounted electric heaters with the addition of a fan heater and large heated towel rail in the bathroom.
- No WIFI
- No Mobile Phone Signal – due to valley location
- No Television Signal – due to valley location
- TV for DVD player available
- Compton Cottages are located on the number 12 Southern Vectis bus route. The nearest stop is situated 100yds from the cottage on the main road
- Compton 1 is decorated in neutral cream and beige with highlights of blues
- Crockery is Linen and white

## Pre-Arrival

- See the main webpage for booking and location details
- Please contact us prior to booking if you have any specific access requirements
- Directions provided with booking

## Approach, arrival and parking

- The cottages are reached on the A3055 and easily visible from the road.
- Turning off the main road, to the righthand side is a small gravel NT carpark, to the left-hand side are the cottages. The minor road continues passed the cottages to Compton Farm.
- Enter the cottages through a five-bar gate on the left. The drive slopes down to the parking area. The turning can be quite tight for a larger vehicle and care should be taken not to brush the gate post.
- Cottages have a honey combed hard standing for one vehicle to the front.
- To the front of the cottage is grass with a gravelled area
- Step up to the porch of 10cm
- The approach benefits from automatic outside lights plus porch light with a switch in the lobby



## Getting in (and out) of the cottage

- The accommodation is on 2 levels: ground and first floor
- **Ground floor:** step up of 10cm to enter the open porch
- Key safe located on righthand side at 150cm high
- Porch light above, switch in lobby
- Front door is low at 170cm high, 90cm width, 2cm threshold
- Knob twist handle 120cm high
- Yale style lock
- First Floor accessed via the sitting room. Door to stairs opens into room, wooden latch. Steep staircase to first floor. 12 steps 19cm high 20cm depth, carpeted, handrail on the right-hand side from step 2.



## Getting around the cottage

### Lobby

- A small lobby area connects the lounge and kitchen
- Switches located for porch, kitchen, automatic outside lighting, fire alarm test button, heating booster
- Emergency lighting



### Sitting Room / Dining room

- Wooden painted door with wooden latch to sitting room, 74cm
- Light switch on righthand side
- Wooden dining table 70cm high
- 4 dining chairs seat height 49cm, back 99cm high
- East facing window with secondary glazing. Views of the Compton down and valley. Reasonable natural light, curtains on poles
- Large wall mounted electric heater
- 2 sofas: seat height 46cm, arm height 63cm, firm seating
- Low side table with 32" TV with integrated DVD
- Small side table with lamp, switch on the cable
- 2x double sockets
- 2 standard lamps – switches on the wall and under shade
- Decorative fireplace with mantel

- Door to stairs
- Carpeted flooring



## Kitchen

- Kitchen is fitted with a fire door and automatic closure. The sensor is released at the sound of the fire alarm however it is sensitive to noise and may close at other times.
- Light switches located in the lobby and to the lefthand side of the bathroom entrance
- Kitchen comprises: 4 wall cabinets, 3 undercounter cabinets, 2 draws
- Belfast style sink with over arch mixer tap with leaver hot and cold handles
- Work top height at 93cm high
- Tiled splash-back
- Undercounter fridge
- Undercounter freezer
- Full size dishwasher
- Double electric oven with 4 hot plates and fan above
- Radio, toaster, cordless kettle, 800kw microwave, peddle bin
- Electric wall mounted heater
- Fire extinguisher, fire blanket, fire action notice,
- East facing window, reasonable natural light, roman blind with chain on righthand side
- Door to utility cupboard – wooden with latch
- Recessed ceiling lights
- Vinyl flooring



## Utility Cupboard

Light switch located outside on the left-hand side of the door

Comprises: Washer/dryer

Distribution board and internal light

Ladders, laundry accessories, iron, highchair, Hoover, mop and bucket

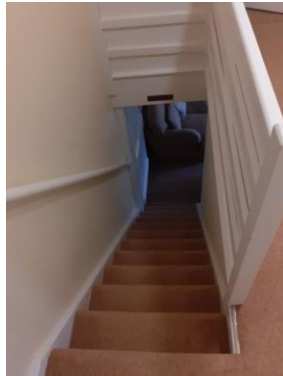
Ceiling light

Stone flooring



## Stairs and First Floor Landing

- **Stairs:** Light switch on the lefthand side
- Stairs contain 12 steps, 19cm high, 20cm depth
- Carpeted
- Handrail on the righthand side from step 3
- Wooden door with latch from step 3, 150cm high
- Ceiling slopes from the righthand side low of 110cm high to 161cm head height
- Stair gate fitted to top of stairs measuring 74cm high, 80cm wide. Wooden gate with plastic fixings. Push clip and lift to- open



- **Landing:** Doors to twin and double bedrooms
- Small shelf containing books games and DVDs
- Ceiling light – switches located outside both bedroom doors
- Emergency lighting



- Carpet flooring



## Double Bedroom

- Wooden door with latch
- Light switch on the left-hand side when entering. Switch controls main ceiling pendant and side lamps
- Double bed 73cm mattress height with brass head and foot boards
- 2 bedside cabinets with draw and cupboard
- 2 side lamps, switch on the base
- Electric wall mounted heater
- Built-in wardrobe, containing blankets and oil filled heater
- Fireplace – nonworking, with mantle and wall mounted mirror over
- Ceiling pendant light
- Farmhouse style decorative chair
- Chest of draws containing 2 large and 2 small draws
- Sloping ceiling on two sides
- Window fitted with secondary glazing, facing east with views of the valley- good natural light, curtains with poles
- Carpet flooring



## Twin Bedroom

- Wooden door with latch 68cm width
- Light switch located on the left-hand side when entering the room. Switch controls both ceiling pendant and bed side lamp
- 2 single beds 66cm mattress height, wooden headboards fixed to wall

- Width between beds 40cm
- 1 shared bedside cabinet with draw and cupboard
- Lamp with switch at the base
- Electric wall mounted heater
- Wall mirror
- Set of wall hooks
- Window fitted with secondary glazing, east facing with views of the valley – good natural light. Curtains with poles
- Carpet flooring
- Ceiling sloped on one side



## Bathroom

- Bathroom door opens into the kitchen space, switch for bathroom and kitchen combined on the left-hand side of the door. Wooden door latch
- Recessed ceiling lights, pull cords for ceiling light and extractor fan on the right-hand side
- Bathroom comprises of sink 84cm high with mirror over
- Bath 62cm high recessed into alcove with shower over – main water, good water pressure. Shower curtain
- Assistance rail to left-hand
- Toilet, seat height 43cm, push button on top of cistern
- Large towel rail
- Electric fan heater
- Towel ring and toilet roll holder
- 2 small, frosted, south facing windows with roman blinds, chain to the left-hand side



## Garden

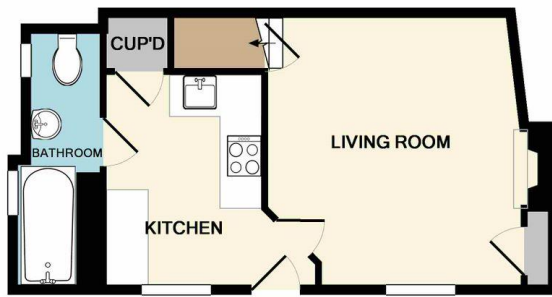
- Grassed area to the front of the cottage with rotary washing lines
- Picnic table located to the front of the cottages on gravelled area
- Bins storage to the lefthand side of kitchen window at the front of the cottage 'general, Dry Mixed Recycling and glass'
- To the rear of the property is a small lawned area with post and rail fencing and a boundary slope up to the road, outside tap at and small latched gate to divide grass area to Compton 2 if required.



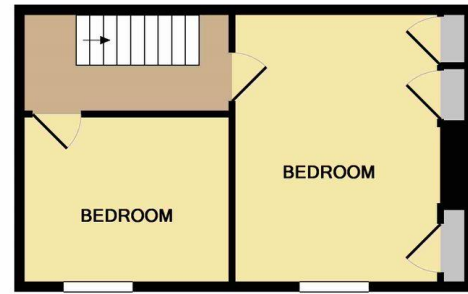
## Additional Information

- During the summer months we have returning swallows which nest in the porch above the front door, they have been returning for many years and a small circular platform is provided for them to continue nesting here. During high activity bird droppings can accumulate on the porch floor. The cottage caretaker will ensure this is removed at change round. We kindly ask you to leave the porch light off during these months
- The cottage is situated near a working farm, cattle are grazed up to the boundary fence
- It should be noted that due to the cottage's location, mobile phone and TV signals do not reach the cottages. A TV with integrated DVD is provided along with a selection of DVDs





GROUND FLOOR  
APPROX. FLOOR  
AREA 315 SQ.FT.  
(29.2 SQ.M.)



1ST FLOOR  
APPROX. FLOOR  
AREA 276 SQ.FT.  
(25.6 SQ.M.)

COMPTON FARM COTTAGE 1  
TOTAL APPROX. FLOOR AREA 591 SQ.FT. (54.9 SQ.M.)

Whilst every attempt has been made to ensure the accuracy of the floor plan contained here, measurements of doors, windows, rooms and any other items are approximate and no responsibility is taken for any error, omission, or mis-statement. This plan is for illustrative purposes only and should be used as such by any prospective purchaser. The services, systems and appliances shown have not been tested and no guarantee as to their operability or efficiency can be given  
Made with Metropix ©2019

## Facilities at all cottages

The National Trust aims to expand the list of accessible /equipment/items available at each cottage and these may include

- Cordless kettle
- Hollowfibre bedding
- Chair with armrests
- Good reading light
- Large handle vegetable peeler
- Easy tin opener
- Non-slip mat for bath/shower
- Non-slip place mat
- Easy jar opener
- Information in alternative formats (on request)

Please note that we cannot guarantee that all items will be available at the time of your visit. Please enquire at the time of booking regarding any particular requests.

## Specialist equipment

Other specialist equipment such as wheelchairs, bath seats, toilet frames etc may be available for loan or purchase from the local Red Cross loan centre. Please check this out before booking the Cottage and contact us if you require further information.

<http://www.redcross.org.uk/standard.asp?id=89425>

## **Future Plans to improve Access to National Trust Holiday Accommodation**

- We are currently in the process of writing accessibility guides for all our holiday cottages and bunkhouses and improving access over time for all our guests. All feedback is very helpful in informing us of ways in which we can improve access. We welcome any comments or ideas from you about access at this cottage and thank you for taking the time to do this. Please do this in the most convenient way for you. See contact details below or information on website.

## **About the Accessibility Guide**

- This Accessibility Guide is intended to provide key information about the accommodation that may be particularly relevant to guests with disabilities. Please contact us prior to booking if you would like information that is more specific and we will be happy to oblige.  
Email: [cottages@nationaltrust.org.uk](mailto:cottages@nationaltrust.org.uk)  
Phone: 0344 8002070

## **Access for All at the National Trust**

- The Access for All office works to improve access at all National Trust accommodation and properties. The office welcomes comments and ideas on improving access.  
Phone: 01793 818531  
Email: [accessforall@nationaltrust.org.uk](mailto:accessforall@nationaltrust.org.uk)

Date June 2023