

## National Trust Pomone Coastguard Cottage Accessibility Guide

Pomone Coastguard Cottage  
Needles Headland  
Isle of Wight  
PO39 0JH

Ref 001001  
Sleeps 4 +Cot  
2 Dogs

This cottage can be booked as part of a group of 3 cottages (Varvassi & Irex)



### Introduction

- This cottage is situated in a stunning location on the Needles Headland in open downland
- Far reaching views to the north and east of the Solent, to the west is the Dorset coastline
- Pomone accommodates 4 guests plus cot and up to 2 dogs
- Front door opens into a lobby, with doors to bathroom and utility cupboard, and kitchen.
- Double, Twin and sitting room are accessed via the kitchen
- Heating is provided by storage heaters, also a woodburning stove and additional electric and fan heater in the bathroom
- No Wi-Fi, mobile phone coverage can be intermittent
- Pomone is located ½ a mile from the number 7 & 12 Southern Vectis bus service at the Alum Bay Pleasure Park. In addition, from March to October an open top bus 'Needles Breezer' serves the Needles Battery 100yds from the cottage. Please note the service runs as a short 'hop on hop off' tour and is therefore not included in the senior citizen's free pass. It may be affected during bad weather.
- The cottage is decorated in neutral creams, beige and soft browns with highlights of greens and gold in a country theme
- Crockery is pale green and white

### Pre-Arrival

- See the main webpage for booking and location details
- Please contact us prior to booking if you have any specific access requirements
- Directions provided with booking

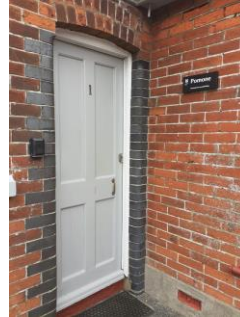
## Approach, arrival and parking

The cottage is reached on the B3322 to Alum Bay pleasure park. Once at Alum Bay head towards the park's car park, look out for the model lighthouse at the entrance. Before turning into their car park turn left through the gateway. There is sign here for the National Trust Needles Headland and a No Cars sign. Follow this road, turning left at each junction to the very end of the road. Turn sharp left at the end onto a short, gravelled track heading down to the parking area for the cottages. The cottage is located on the right-hand side. Please be aware that the headland road is a single-track hair-pinned road. It is shared with walkers and the open top bus which has priority.



- Automatic Outside lighting
- Gravelled parking area, can be uneven with potholes
- Bins are located at the back of the parking area, General waste, Dry Mixed Recycling and Glass
- A slope with a handrail on the left-hand side leads down to the cottages from the parking area. Handrail height between 90cm-110cm
- Steps run alongside the slope from car park. 8 steps approx. 17cm high, 25cm depth. Handrail at a height of 110cm on the left-hand side
- The area around these cottages is uneven and has changing height levels and steps throughout the site. A central step of 16cm high runs the length of the site
- This area can be extremely windy. Please take extra care when opening car doors and moving around the site during periods of bad weather.
- Please note there are steep slopes and drops in the area

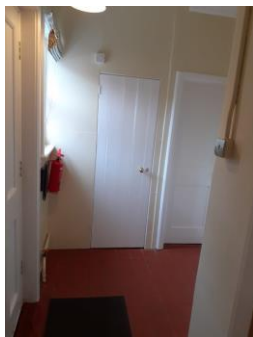




## Getting in (and out) of the cottage

### Lobby

- The accommodation is on one level
- Key safe is located on the left-hand side of the door at a height of 140cm, yale style lock, brass bar style handle.
- Front door opens into lobby, door width 71cm. step up height of 13cm, down to lobby floor 1cm
- Light switch is ahead on right-hand side, 142cm high, traditional style switch
- Hot water 'booster' button on left-hand side. Hot water tank cupboard
- Coat hooks x4, height 170cm over
- Storage heater
- Wooden bathroom door



- **Utility cupboard.** Latch style handle 120cm high. Contains – adjustable ironing board, Hoover, highchair, nursery fire guard, clothes airer, ash pan and brush, laundry basket, first aid box, selection spare bulbs and batteries. 2 shelves. Switch for bathroom heater at 80cm high. Bathroom extractor fan switch at ceiling height. Sash window (non-opening) good natural light



- Sash window (non-opening) facing east, good natural light, sill 50cm wide, 9cm depth
- Roman blind, chain on right-hand side
- Pendant light
- Fire extinguisher-Foam. Fire action notice
- Terracotta tiled floor

## Getting around the cottage

### Sitting Room

- Door to sitting room is a fire door measuring 71cm wide, opens into room, knob style handle 90cm high
- Entering sitting room light switch is on the right-hand side at a height of 140cm.
- Sitting room contains 1 sofa in gold fabric measuring seat height 44cm, arm height 68cm, back height 68cm
- 2 chairs in green striped fabric. Measuring seat height 40cm, arm height 60cm, back height 90cm
- Side table with Lamp. Lamp dimmer switch on base.
- Radio
- Floor stand reading lamp with foot switch
- Mantle height 103cm
- 4kw 'Charnwood Country 4' Wood burner. Terracotta tiled hearth 79cm depth, 97cm width. 46cm clearance to the front.
- 2 plug sockets at floor level
- TV 32" with Freesat connection and DVD player
- Wooden sideboard with 2 draws and cupboard containing books and games
- Large storage heater
- Sash window facing north, width 113cm, sill 20cm depth. Good natural light
- Traditional curtains on pole. Fixed metal tiebacks 125cm height
- Wooden chest/coffee table 80cm width, 48 depth, 45cm high
- Wall mounted bookshelf with books



- Pendant light
- Carpet floor with hearth rug



## Kitchen

- Two doors into kitchen, one from entrance lobby – step up of 17cm, Wooden door opens into kitchen, 71cm width, round knob style handle at 90cm high from kitchen floor level
- Doors from kitchen leading to Double, Twin and Sitting Room
- Light switch on left-hand side at a height of 140cm.
- Lighting - spotlights
- Large storage heater
- To the right-hand side, Fridge freezer, 170cm height, 59cm, wide, 61cm depth
- Work surfaces stand at 93cm, double socket over surface and location of fire blanket
- Ceramic sink and half sink with drainer 100cm wide, 53 cm depth, arch over tap with pull leaver hot and cold, under window
- Sash window south facing, 118 cm wide 20cm depth. Front of work surface to window 82cm Good natural light, south facing
- Roman blind with chain on right-hand side
- Tiled splash back
- Electric double oven with 4 plates 90cm high, 58cm depth, 59cm wide. Plug socket and cooker power point
- Slimline dishwasher, 45cm wide, 88cm high
- Radio, cordless kettle, toaster, 800W microwave, wall clock and push top bin
- Units consist of, 4 small draw unit, 2 undercounter cupboards, 2 large drawers, 1 large under sink cupboard, 2 large shelves
- Countertop at 93cm
- Kitchen table- rectangular farmhouse style wooden table 78cm high,
- 4 matching chairs, Seat height 45cm, back 87cm high
- Vinyl wood effect flooring
- Fire door leading to inner hall, 71cm width, round knob style handle at 90cm high, door pulls towards you into kitchen



## Double Bedroom

- Wooden fire door opens into the bedroom, 71cm width, round knob style handle at 90cm high
- Light switch on right-hand side 140cm high
- Pine dressing table with mirror and 3 drawers
- Double socket at floor height on left-hand side, emergency torch location.
- Large storage heater
- Freestanding wardrobe
- Sash window, south facing, good natural light, 113cm wide sill depth 20cm
- Curtains with pole, metal tieback at 124cm high
- One bed side cabinet with cupboard and drawer 75cm high
- One lamp, switch on base
- Carpet flooring
- Pendant light
- Bed – Double size, mattress 152cm wide, 200cm long, height 63cm.



## Twin Bedroom

- Wooden fire door opens into the room, 71cm wide, round knob style handle at 90cm high
- Light switch is on left-hand side at a height of 140cm
- Double socket at floor level
- Storage heater
- Curtains on pole, metal tie-back 124cm high
- Sash window, north facing, good natural light. Sill 113cm wide, 19cm depth

# National Trust

- Built-in wardrobe (caretakers' cupboard over)
- Bedside cabinet
- Recessed shelf with wall mounted mirror over (caretakers' cupboard under)
- Bed side cabinet with draw and cupboard 75cm high
- 2 adjustable lamps, switch on base
- Single beds – mattress height 66cm, 90cm wide, 200cm long.
- Carpet flooring
- Pendant light



## Bathroom

- Wooden door opens into bathroom, width 60cm, round knob style handle at 90cm high.
- Door opens into an 'L' shaped room
- Shower main power pull cord on right-hand side
- Ceiling height reduces to 198cm due to a beam into main area
- Pull cord light switch right-hand side
- Hand towel ring
- Sink 84cm high, 50cm max width. tradition pillar taps, hot left, cold right. Plug
- Glass shelf over sink at a height of 124cm
- Wall mounted mirror
- Shaving light over sink pull cord switch
- Bath 152cm in length, 68cm wide. 2 internal handrails. Traditional pillar taps, hot left, cold right. Plug
- Bi-folding shower screen 140cm height, 100cm wide open, 32cm wide closed
- Electric shower. Controls height between 160cm – 175cm from bath base
- Shower head on adjustable pole, height of 152cm from bath base
- Wall mounted soap dish
- Shelf at head of bath 25cm depth, 68cm wide
- Hooks x2 on back of door at 180cm high
- Small sliding lock
- Automatic extractor fan over bath
- Sash window with secondary glazing. East facing, good natural light, 60cm wide, 90cm high

# National Trust

- Roman blind with chain on right-hand side
- Closed cup toilet with push button on top of cistern
- Seat height 43cm.
- Toilet roll holder on wall at 80cm
- Electric wall mounted fan heater, pull cord
- Towel rail, 150cm high
- Electric heater in recess
- Ceiling light
- Vinyl wood effect flooring



## Garden

- A perfect place to watch the sun set!
- Outside the cottage front door is a bench.
- To the front of the cottage on the northside, is a shared area of grass with 2 benches. This area is accessed around the side of 'Pomone' via a set of 6 steps with a handrail approximate height of 110cm high
- **N.B** The grass area is uneven; it is not mown in order to preserve the habitat. On the far side is a steep drop
- All benches - seat height 43cm, arms 66cm, back 85cm. The benches are tethered as during bad weather they are prone to being blown over and away
- Washing lines are located between Irex and Varvassi



## Shared Utilities

### Bike stores

- Free to use bike stores are available. Two stores-
- Store 1. accommodates 2 bikes. Latch height 133cm



- Store 2. Accommodates 4 bikes. Latch height 125cm
- Step up to stores 19cm. Into store 6cm
- Concrete floor
- Decorated in white and grey
- Light switch located outside store 115cm height. Operates light inside both stores
- Secured with numbered padlock. Codes available in Welcome Folder



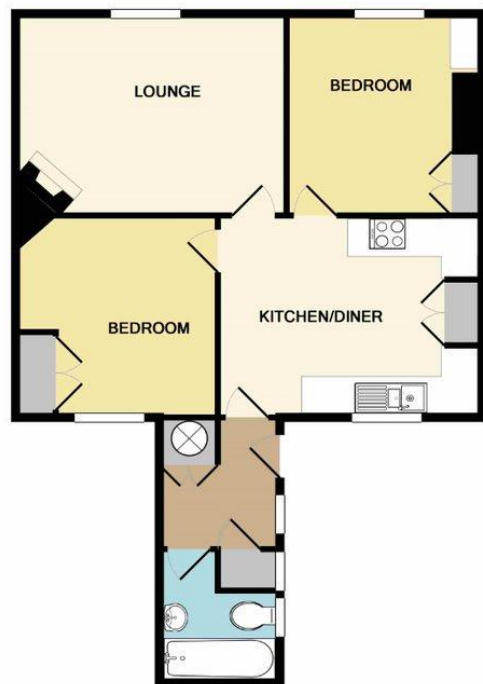
## Laundry Room

- Step up made up of small 5cm and large 22cm height step
- Bolt and latch at 150cm high from bottom step
- Door width 75cm wide
- Light switch on left-hand side 137cm high. 2 ceiling lights
- Work surface height 94cm, 223cm long, 62cm depth
- Double plug above work surface with washing machine and dryer plug
- Circular sink with cold tap (No hot water)
- Window north facing
- 8kg washing machine
- 8kg tumble dryer
- Fire extinguisher – Carbon Dioxide
- Concrete floor
- Decorated in white and light grey
- Wooden doors to mop bucket store



## Additional Information

**NB** There is a fourth cottages located next to Varvassi which is tenanted and not part of the Holidays Accommodation



POMONE  
TOTAL APPROX. FLOOR AREA 628 SQ.FT. (58.3 SQ.M.)

Whilst every attempt has been made to ensure the accuracy of the floor plan contained here, measurements of doors, windows, rooms and any other items are approximate and no responsibility is taken for any error, omission, or mis-statement. This plan is for illustrative purposes only and should be used as such by any prospective purchaser. The services, systems and appliances shown have not been tested and no guarantee as to their operability or efficiency can be given  
Made with Metropix ©2019

## Facilities at all cottages

The National Trust aims to expand the list of accessible /equipment/items available at each cottage and these may include

- Cordless kettle
- Hollowfibre bedding
- Chair with armrests
- Good reading light
- Large handle vegetable peeler
- Easy tin opener
- Non-slip mat for bath/shower
- Non-slip place mat
- Easy jar opener

- Information in alternative formats (on request)

Please note that we cannot guarantee that all items will be available at the time of your visit. Please enquire at the time of booking regarding any particular requests.

## Specialist equipment

Other specialist equipment such as wheelchairs, bath seats, toilet frames etc may be available for loan or purchase from the local Red Cross loan centre. Please check this out before booking the Cottage and contact us if you require further information.

<http://www.redcross.org.uk/standard.asp?id=89425>

## Future Plans to improve Access to National Trust Holiday Accommodation

- We are currently in the process of writing accessibility guides for all our holiday cottages and bunkhouses and improving access over time for all our guests. All feedback is very helpful in informing us of ways in which we can improve access. We welcome any comments or ideas from you about access at this cottage and thank you for taking the time to do this. Please do this in the most convenient way for you. See contact details below or information on website.

## About the Accessibility Guide

- This Accessibility Guide is intended to provide key information about the accommodation that may be particularly relevant to guests with disabilities. Please contact us prior to booking if you would like information that is more specific and we will be happy to oblige.

Email: [cottages@nationaltrust.org.uk](mailto:cottages@nationaltrust.org.uk)

Phone: 0344 8002070

## Access for All at the National Trust

- The Access for All office works to improve access at all National Trust accommodation and properties. The office welcomes comments and ideas on improving access.

Phone: 01793 818531

Email: [accessforall@nationaltrust.org.uk](mailto:accessforall@nationaltrust.org.uk)

Date June 2023