

National Trust Rosetta Cottage Accessibility Guide

Rosetta Cottage
Queens Road
Cowes
Isle of Wight
PO31 8BN



Ref 001009
Sleeps 10 + Cot
No Dogs

Introduction

- Rosetta is part of a large Victorian house situated on the seafront at Cowes
- Rosetta shares an entrance gate and paths with East Rosetta cottage
- Communal gardens overlooking the sea to the side of the property
- Far reaching views of the Solent and Cowes parade
- Rosetta accommodated 10 plus cot
- Ground floor comprises kitchen, dining room with French doors to the communal garden and sitting room, separate WC, Garden Room, Twin Bedroom with en-suite, Stairs to first floor
- First floor comprises of 2 twin rooms, 2 double room, bathroom and shower room with WC, separate WC
- The property is built on a gently sloping site and the house is a little below the road level, steps are therefore a feature of this property
- Heating is provided by storage heaters
- Wi-fi available, intermittent mobile phone reception

- Rosetta is approx. ½ mile walk (20 minutes) from the main Southern Vectis Bus Stop at Carvel Lane Cowes and the 'Red Jet' Foot Passenger Ferry

Pre-Arrival

- See the main webpage for booking and location details
- Please contact us prior to booking if you have any specific access requirements
- Directions provided with booking

Approach, arrival and parking

- The cottage is easy to locate standing proud of other properties in the surrounding area
- 2 allocated parking space are available to the rear of the cottage. This area is gravelled and shared with East Rosetta Cottage (the smaller side of the property) The access point has steps to the door
- Uneven flagstone path leads to the back door
- Outside lights in the car parking area and around cottage
- The rear of the cottage is accessed via a narrow-unmade lane to the west side. This lane is shared with other properties, Rosetta parking entrance on the right-hand side
- On-street parking is available at the front of the cottage on the opposite side of the road (parking charges apply)
- Passengers and luggage can be dropped at the shared front gate 95cm wide, which has shallow steps. Rosetta Front door entrance is here
- 2 steps at 15cm and 17cm
- Steps at 9cm and 12cm at door
- There are outside lights

Getting in (and out) of the cottage

Porch

- The key safe is located inside the front porch at 130cm high
- Porch door is 88cm wide with a 4cm threshold, 92cm between lobby doors
- Front entrance door threshold 5cm, door width 79cm
- Light switch on right-hand side
- Recessed spotlight
- Fire action notice, fire emergency button
- Meter cupboard



Back door

- A second entrance is in the kitchen at the rear of the property. Exits onto uneven flagstones with steps to the parking area. This exit area is shared with East Rosetta cottage and leads to the back door of East Rosetta Cottage

Getting around the cottage

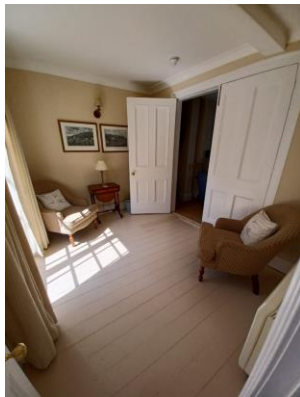
Sitting Room

- Very large room with high ceiling and view of the parade and grounds
- 2x 3-seater sofas, seat height 46cm, arm 60cm back 80cm
- Wood burner stove positioned on a marble hearth with a 5cm threshold
- 2x oversized chairs, seat height 45cm, arm 60cm, back 85cm
- Large footrest 35cm high
- Chair, seat height 45cm, arm 57cm back height 90cm
- 2 Side tables
- Coffee table
- Cabinet with bookcase
- 3 side lamps, switch on cable
- Decorative Grandfather clock
- Floor lamp, switch at plug
- TV 32" and DVD
- Large bay window, north facing, with curtains on pole
- Window east facing with curtains on poles
- Carpet flooring
- Door 77cm wide
- Chandelier lighting
- Decorated in blue and cream
- Stepped French Windows 15cm and 20cm high doors to garden from lounge



Garden Room

- Large double doors to main living room 180cm wide
- Side table with lamp, switch on the cable
- Wall light
- 2x chairs with seat height 46cm, arm 58cm high, back 90cm high
- Location of log basket
- Double doors to garden, threshold 30cm high
- Curtains with poles
- Door to ground floor twin room 62cm wide
- Decorated in cream



Dining Room

- Table seating 10 people with fascia board, 70cm high, knee clearance 58cm high
- Decorative fireplace with mantel
- Double bay doors to shared garden, east facing with curtains on poles
- Fabric dining chairs with arm rests, seat height 46cm, arm 58cm, back 100cm
- Large side dresser x2
- Pendant light
- Radio
- Large table lamps with switch on cable
- Carpet flooring
- Dining room door 78cm
- Decorated in creams with highlights of blue



Kitchen

- Selection of wall and undercounter cupboards
- Double electric oven
- Induction hob with 4 plates and extractor fan over
- Worktop heights of 90cm
- Full size dishwasher
- Fridge freezer
- Washing machine (with clear numbers and controls)
- Sink and half sink
- Pull leaver handles and arch over mixer tap
- Kettle and toaster
- Large sash window, east facing with roman blind
- Internal kitchen door 76cm
- Emergency lighting
- Back door opens onto tiled surface then uneven flag stones. Set of steps to reach side garden and rear parking area and log store
- Yale style lock
- Timed outside light, switch located inside back door



Hall and Stair

- Large entrance hall with rooms leading off
- Wood flooring, painted white
- Pendant lighting
- 3-seater sofa, seat height 40cm, arm 60cm and back 90cm
- Stairs to the first floor with a 4-stair fan at the bottom
- Stair width 88cm, 14 steps
- Dado rail to the right-hand side and banister to the left-hand side
- Pendant lighting over stair well
- Carpet runner throughout
- Utility cupboard
- Fire alarm control panel
- Emergency lighting



Ground floor WC

- Switch on the right-hand side
- Door width 60cm
- Threshold of 3cm into ground floor WC
- Toilet seat height 44cm, flush handle on cistern
- Small cloakroom sink 80cm high with pillar taps
- Mirror
- Pendant lighting
- Fan, no window



Twin Bedroom with En Suite (Ground Floor)

- 2 single divan bed with cast iron bed heads and a mattress height of 68cm
- 2 bed side cabinets 76cm high with lamps, switch at the neck
- Large free-standing wardrobe
- Decorative chair with a seat height of 36cm
- South facing window with roman blind
- Mirror
- Pendant lighting
- Carpet flooring
- Door opening into garden 23cm step up. Curtain on pole
- Doors to garden room and entrance hall
- Decorated in cream and greens



En suite bathroom

- Door to bathroom has 5cm step on to uneven stone flooring, width 74cm
- Sink at 77cm high with pillar taps with mirror over
- Toilet with a seat height of 44cm and a flush button on the cistern
- Bath with 56cm high side with mains shower over
- Twist top taps and directional lever for shower/bath
- Folding shower screen
- Grab rail at 110cm high from base of bath
- 2 windows, 1 sash window, half frosted, south facing with roman blind, 1 frosted east facing with roman blind



First Floor Landing

- Landing around staircase with banisters
- Carpet flooring
- Pendant lighting and emergency lighting

- Decorative chair 34cm high
- Bookshelves
- Large window at top of staircase facing north with view of the Solent. No access onto balcony. Curtains on poles
- All first-floor rooms lead off from landing



Twin Bedroom (1st Left-hand side)

- Light switch on left-hand side
- Door width 68cm
- 2 x single beds with metal headboards and a mattress height of 68cm
- Shared bedside cabinet, 80cm high with 2 lamps with switch on the cable
- Dressing table with mirror
- Decorative chair
- Built-in wardrobe
- Wall mirror
- Pendant lighting
- Windows facing south with view of the grounds, curtains on pole
- Low windowsill 65cm high
- Decorated in cream and blue



Twin Bedroom (2nd Left-hand side)

- 2 single beds with metal headboards and a mattress height of 68cm
- Shared bedside cabinet 75cm high. 2 lamps with switch on the cable
- Free standing wardrobe
- Chest of drawers 80cm high
- Decorative chair with seat height of 45cm
- Decorative fireplace

National Trust

- 2 windows 1 south facing and 1 east facing, both with sea views
- Curtains on poles, low windowsill
- Pendant light
- Carpet flooring
- Decorated in cream and blue



Double Bedroom

- Light switch on left-hand side
- Double bed with a mattress height of 60cm
- 1 bedside table with lamp, switch on the neck
- Large freestanding wardrobe
- Chest of drawers
- Dressing table with mirror
- Decorative fireplace
- 2 wall lights above bed, switch located above bedhead
- 2 windows facing west and north with sea views. Low windowsills 45cm high
- Curtains on poles
- Pendant light
- Carpet flooring
- Decorated in cream and blue



Master Bedroom

- Door 68cm wide
- Light switch on the left-hand side
- Double bed with wooden headboard and a mattress height of 53cm
- 2 bedside cabinets with lamps, switch located on the cable
- Dressing table with mirror

National Trust

- Large freestanding wardrobe with drawers
- 2 chairs with a seat height of 44cm, arms 58cm and back 90cm
- Decorative fireplace with mantel
- 2 windows facing east (sill at 67cm high) North (sill at 80cm high) with sea and garden views
- Curtains on poles
- Pendant light
- Carpet flooring
- Decorated in cream and blue



Shower Room

- Step up into shower room of 16cm
- Large walk-in shower, glass panels with no door, threshold of 5cm
- Electric shower
- Basin 83cm high with pillar taps with mirror over and wall light
- Toilet with seat height of 44cm
- Heated towel rail
- Low window 38cm high, frosted, north facing with roman blind
- Utility cupboard containing Hoover and towel rail switch
- Decorative chair, seat height 46cm
- Ceiling light with pull cord at entrance
- Decorated in cream and blue



Separated WC 1st floor

- Doorway 60cm wide

- Step up of 10cm
- Toilet with a seat height of 44cm and flush handle on the front of the cistern
- Small cloakroom sink at 80cm high, twist top taps and mirror over
- Wooden painted floorboards
- Window facing north with roman blind
- Decorated in cream and blue



Bathroom

- Bath with 60cm sides, internal grab handles and pillar taps
- Shower cubical with curved sliding door, 11cm threshold, tray 114cm long
- Rain style shower head and small head, fan over
- Sink 85cm high with pillar taps and cupboard under and mirror over
- Towel rail, electric heater
- Wall light and ceiling light
- Velux window
- Decorated in cream and grey



Garden

Communal garden can be accessed directly by both Rosetta and East Rosetta cottage
Sloping and on different level with a mixture of gravelled and flag stoned paths
Large lawned area to the east side of the property with outside tables and chairs
Views of Cowes Sea-front and the Solent. A Wild area is at the rear of the property



Lawn with some changes in level

Steps to garden area at the rear 30-32cm tread and height between 10 – 12 cm

Metal garden furniture with chairs. Table 72cm high and chairs with a seat height of 42cm



National Trust

Additional Information

GROUND FLOOR
1343 sq.ft. (124.7 sq.m.) approx.



1ST FLOOR
1028 sq.ft. (95.5 sq.m.) approx.



TOTAL FLOOR AREA : 2371 sq.ft. (220.3 sq.m.) approx.

Whilst every attempt has been made to ensure the accuracy of the floorplan contained here, measurements of doors, windows, rooms and any other items are approximate and no responsibility is taken for any error, omission or mis-statement. This plan is for illustrative purposes only and should be used as such by any prospective purchaser. The services, systems and appliances shown have not been tested and no guarantee as to their operability or efficiency can be given.
Made with Metropix ©2022

Facilities at all cottages

The National Trust aims to expand the list of accessible /equipment/items available at each cottage and these may include

- Cordless kettle
- Hollowfibre bedding
- Chair with armrests
- Good reading light
- Large handle vegetable peeler
- Easy tin opener
- Non-slip mat for bath/shower
- Non-slip place mat
- Easy jar opener
- Information in alternative formats (on request)

Please note that we cannot guarantee that all items will be available at the time of your visit. Please enquire at the time of booking regarding any particular requests.

Specialist equipment

Other specialist equipment such as wheelchairs, bath seats, toilet frames etc may be available for loan or purchase from the local Red Cross loan centre. Please check this out before booking the Cottage and contact us if you require further information.

<http://www.redcross.org.uk/standard.asp?id=89425>

Future Plans to improve Access to National Trust Holiday Accommodation

- We are currently in the process of writing accessibility guides for all our holiday cottages and bunkhouses and improving access over time for all our guests. All feedback is very helpful in informing us of ways in which we can improve access. We welcome any comments or ideas from you about access at this cottage and thank you for taking the time to do this. Please do this in the most convenient way for you. See contact details below or information on website.

About the Accessibility Guide

- This Accessibility Guide is intended to provide key information about the accommodation that may be particularly relevant to guests with disabilities. Please contact us prior to booking if you would like information that is more specific and we will be happy to oblige.
Email: cottages@nationaltrust.org.uk
Phone: 0344 8002070

Access for All at the National Trust

- The Access for All office works to improve access at all National Trust accommodation and properties. The office welcomes comments and ideas on improving access.
Phone: 01793 818531
Email: accessforall@nationaltrust.org.uk

Date June 2023