

National Trust Cottages Accessibility Guide (April 2023)

Aspen
Crom Estate
Newtownbutler

Ref: 019009

Introduction

- This cottage overlooks a small wood with an abundance of wildlife, making for an interesting mealtime or just watching the birds and other animals going about their daily routines.

The Cottage is arranged as follows:



Ground Floor:

- Kitchen, sitting/dining room.

First Floor:

- Double bedroom, single bedroom, bathroom with shower over bath.

Pre-Arrival

- See the main webpage for booking and location details.
- Please contact us prior to booking if you have any specific access requirements.
- Directions provided with booking.
- Please bring a torch if arriving after dark.

Approach

- Single track tarmac road through the Estate, passing one cattle grid and two speed ramps.
- The approach is well signed for Holiday Cottages with National Trust logo.

Arrival & Parking Facilities

- Parking in gravel courtyard with a small walk leading to cottage front door.
- The key for the cottage is kept in a key safe within the laundry room. The laundry room is located on the left-hand side of the courtyard archway upon entering. There is an 80mm step into the laundry room, an outside door 850mm wide and inside door 700mm wide. The key safe is located on the right-hand side 1600mm high from the ground, each key safe is labelled for each cottage.



Getting in (and out) of the cottage

- Four steps into cottage maximum height 180mm,
- Door to cottage 790mm wide into level flagstone flooring,

Getting around the cottage

Ground Floor

- Level access throughout the ground floor.
- Floor surfaces are a mixture of carpet and vinyl flooring.
- Internal door widths are 690-760mm.

First Floor

- Carpeted staircase with 14 steps, width 830mm and 200mm high to first floor with handrail to left hand side ascending.

Sitting Room

- 730mm wide door into level carpeted flooring.
- Room has one arm chairs and a 2 seater sofa with seat heights 410-495 mm and an open fire.
- Dining area with round wooden table 740mm high with 250mm clear knee space underneath.
- Three wooden chairs with backrest.
- Chair height 470mm.
- Views to woodland.



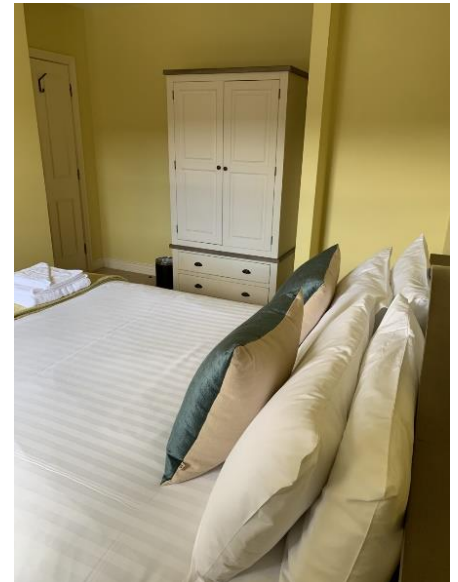
Kitchen

- Door access is 690mm wide into level vinyl flooring.
- The kitchen has fitted units with cooker and electric hob, washing machine, fridge freezer and microwave. Kitchen worktop is 900mm high.
- Sink has mixer tap.
- Overhead triple pendant light fitting.



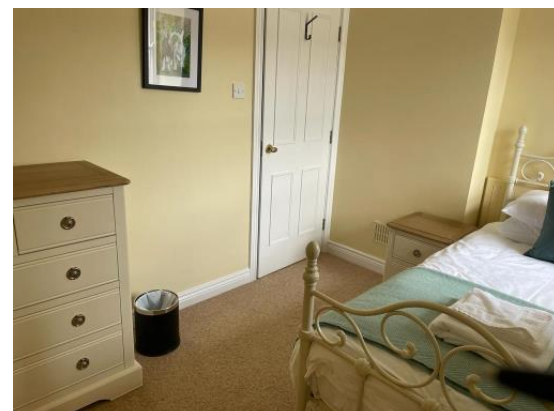
Double Bedroom

- Door 710mm wide.
- Wooden Frame bed 680mm high x 2130mm long x 1600mm wide. 220mm space under bed.
- Small bedside locker each side.
- Free standing wardrobe and separate mirror.
- Armchair with seat height of 450mm.



Single Bedroom

- Door 710mm wide.
- Metal frame bed against right hand side wall of room. 620mm high x 1960 long x 1000mm wide. 270mm space under bed.
- Bedside table, chest of drawers and separate mirror.



Bathroom

- Door 710mm wide.

- Bathroom comprises basin, toilet, electric shower over bath.
- Basin is 860mm high.
- Toilet is 450mm high.
- Bath is 540mm high x 550mm wide x 1150mm long.
- Shower unit controls are 1200mm high.



Garden

- No designated garden area for cottage but surrounded by countryside and several picnic benches close to the cottage which can be used by guests.

Additional Information

Facilities at all cottages

The National Trust aims to expand the list of accessible /equipment/items available at each cottage and these may include

- Cordless kettle
- Hollowfibre bedding
- Chair with armrests
- Good reading light
- Large handle vegetable peeler
- Easy tin opener
- Non-slip mat for bath/shower
- Non-slip place mat
- Easy jar opener
- Information in alternative formats (on request)

Please note that we cannot guarantee that all items will be available at the time of your visit. Please enquire at the time of booking regarding any particular requests.

Specialist equipment

Other specialist equipment such as wheelchairs, bath seats, toilet frames etc may be available for loan or purchase from the local Red Cross loan centre. Please check this out before booking the cottage and contact us if you require further information.

<http://www.redcross.org.uk/standard.asp?id=89425>

Future Plans to improve Access to National Trust Holiday Accommodation

- We are currently in the process of writing accessibility guides for all our holiday cottages and bunkhouses and improving access over time for all our guests. All feedback is very helpful in informing us of ways in which we can improve access. We welcome any comments or ideas from you about access at this cottage and thank you for taking the time to do this. Please do this in the most convenient way for you. See contact details below or information on website.

About the Accessibility Guide

- This Accessibility Guide is intended to provide key information about the accommodation that may be particularly relevant to guests with disabilities. Please contact us prior to booking if you would like information that is more specific and we will be happy to oblige.

Email: holiday.enquiries@nationaltrust.org.uk

Phone: 0344 8002070

Access for All at the National Trust

- The Access for All office works to improve access at all National Trust accommodation and properties. The office welcomes comments and ideas on improving access.

Phone: 01793 818531

Email: accessforall@nationaltrust.org.uk

Date April 2023