

## **National Trust Cottages Accessibility Guide**



### **Lookout Cottage**

Address: Low Newton by the Sea, Alnwick, Northumberland, NE66 3EQ.

Ref: 017001.

### **Introduction**

Lookout is a single storey cottage. Access to the cottage is across a field, through a padlocked farm gate, with a sign on for Lookout Cottage (A code is supplied prior to stay).

The garden is enclosed by a stone wall and is east facing.

Heating – electric panel heaters and multi fuel stove.

Hot water – electric immersion.

### **Pre-Arrival**

- See the main webpage for booking and location details.
- Please contact us prior to booking if you have any specific access requirements.
- Directions provided with booking.
- Bring a torch if arriving in the dark.

## Approach



Access to the cottage is across a field, through a padlocked farm gate (code supplied prior to stay). Cars can be driven, with care, across the field to the cottage and can be parked next to the cottage when good weather permits or by the entrance gate should the weather be inclement.

## Arrival & Parking Facilities

There is a designated parking space for two cars at the bottom of the hill where guests can leave their car at all other times. Additional car parking is available in the public pay and display car park (not overnight parking) across the lane from the cottage.

Part of building houses Coastguard equipment (separate access) shared access to garden area and external WC.

## Getting in (and out) of the cottage

- Garden gate 750mm opening.
- External door 850mm opening width, head height 1800mm.
- Single stone step at front door 140mm high with small door thresh.
- Single stone step into kitchen 130mm high and 115mm in width.
- Lobby painted concrete floor.

## Getting around the cottage

### Entrance Porch

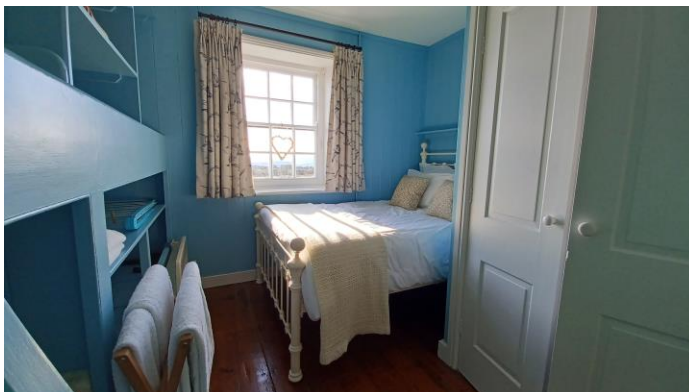
- Small fridge freezer in porch measuring 1080mm high and 480mm wide.
- Internal door 1020mm wide opening inwards

## Open plan Kitchen and Sitting Room



- Wooden floorboards with rug
- Worktops of 935mm height and 640mm width. L-shaped sink unit
- Wall mounted fitted units and open shelves
- Microwave and freestanding electric cooker
- Mixer tap
- Multi fuel stove
- Bay window table seating/dining area. Step 235mm onto raised platform with a seating area height of 505mm (including cushioned seat)
- Half-moon table – 980mm from floor to top with knee clearance of 710mm and 375mm opening to seating
- 2 bar stools 660mm seat height
- 3 ceiling mounted spotlights each with three lights
- 3 seat sofa 490mm (seat height)
- DAB Radio system.
- TV and DVD player located on shelf in alcove
- WiFi provided
- Ample circulation space but only 610mm width between open door and kitchen unit

## Bedroom





- Doorway to bedroom 890mm with raised door thresh 30mm high and 100mm wide.
- Built in bunk beds and storage to left hand side of room.
- Lower bunk height from floor 510mm, length 1700mm, width 675mm, head height 585mm.
- Upper bunk height from floor 1385mm, accessed by wooden ladder of 5 rungs measuring 1355mm floor to top rung. Height of first rung is 330mm and 45mm depth
- Upper bunk length 1700mm, width 675mm, 1020mm head height.
- Double bed mattress height from floor 750mm with under bed clearance of 390mm.
- Single ceiling light in centre of room.
- LED strip lights under shelf at head of bed.

## Bathroom



- En-suite shower room, to right hand side of door from living space with nonslip flooring.
- Access through double doors 970mm
- Large shower with sliding door opening width of 480mm, shower tray height 140mm, size of enclosure 1165mm long x 710mm wide
- Wash hand basin 760mm high with cross head taps
- Enclosed bathroom light – central location
- Shaver socket in over mirror light
- Heated towel rail.

## Outside Toilet



- Step 110mm high and 260mm wide, thresh 35mm deep.
- Door opening 750mm.
- Toilet and small sink
- Hot water from sensor tap

## Laundry Room

- There is no Laundry Room in this cottage.

## Garden



Enclosed garden accessed at side of building – shared access with Coastguard.

## Additional Information

- Dogs are welcome at all our cottages.
- In the event of a fire, it is the responsibility of the guests to evacuate themselves. Vibrating fire/smoke detectors are available if requested at time of booking. Please contact us if you have any other specific access requirements in this respect.

## Facilities at all cottages

The National Trust aims to expand the list of accessible /equipment/items available at each cottage and these may include

- Cordless kettle
- Hollowfibre bedding
- Chair with armrests
- Good reading light
- Large handle vegetable peeler
- Easy tin opener
- Non-slip mat for bath/shower
- Non-slip place mat
- Easy jar opener
- Information in alternative formats (on request)

Please note that we cannot guarantee that all items will be available at the time of your visit. Please enquire at the time of booking regarding any particular requests.

## Specialist equipment

Other specialist equipment such as wheelchairs, bath seats, toilet frames etc may be available for loan or purchase from the local Red Cross loan centre. Please check this out before booking the Cottage and contact us if you require further information.

<http://www.redcross.org.uk/standard.asp?id=89425>

## Future Plans to improve Access to National Trust Holiday Accommodation

- We are currently in the process of writing accessibility guides for all our holiday cottages and bunkhouses and improving access over time for all our guests. All feedback is very helpful in informing us of ways in which we can improve access. We welcome any comments or ideas from you about access at this cottage and thank you for taking the time to do this. Please do this in the most convenient way for you. See contact details below or information on website.

## About the Accessibility Guide

- This Accessibility Guide is intended to provide key information about the accommodation that may be particularly relevant to guests with disabilities. Please contact us prior to booking if you would like information that is more specific and we will be happy to oblige.  
Email: [cottages@nationaltrust.org.uk](mailto:cottages@nationaltrust.org.uk)  
Phone: 0344 8002070

## Access for All at the National Trust

- The Access for All office works to improve access at all National Trust accommodation and properties. The office welcomes comments and ideas on improving access.  
Phone: 01793 818531  
Email: [accessforall@nationaltrust.org.uk](mailto:accessforall@nationaltrust.org.uk)

December 2022