

National Trust Cottages, Accessibility Guide

Godolphin House
Godolphin Estate
Godolphin Cross
Helston
Cornwall
TR13 9RE

Ref: 011108



Introduction

Godolphin House is a striking Grade-1 listed building within a 500-acre country estate that is home to one of Cornwall's most important medieval gardens. The 17th Century manor has parts dating back to the late 1400s. It has undergone major restoration since the National Trust took it over in 2007.

Pre-Arrival

- See the main webpage for booking and location details.
- Please contact us prior to booking if you have any specific access requirements.
- Directions provided with booking

Approach

- The Visitor Welcome team at Godolphin recommend guests use the App *What 3 Words* to pinpoint the site. This is more accurate than the postcode. (The three words for the entrance to the Godolphin Estate are: *quit, warms, casually*).
- There are brown National Trust signs on the road on the approach to the Estate and a final sign pointing into the entrance.
- Follow the signs for Accessible/Disabled Parking where you will find reserved marked spaces for Holiday guests.
- Drive carefully as the track is uneven in places and there is ditch on one side.
- Be aware that pedestrians use this track to get from the main visitor car parks to the centre of the Estate.

Plan of the central part of the Godolphin Estate



- 1 Reception, tea-room and toilets
- 2 Folly
- 3 King's Garden
- 4 King's Room
- 5 Stables
- 6 Godolphin House
- 7 Orchard
- 8 Cider House
- 9 Far orchard

- 10 Side garden
- 11 Potting shed
- 12 Stew ponds
- 13 Side garden paddock
- 14 Bee hives
- 15 Shippons (cowsheds)
- 16 Bull-pen
- 17 Granary
- 18 Barn

Reserved parking places for holiday guests are in the accessible car park. This car park is not shown on the plan above but is on the right just before the main entrance road and the track leading up to the Barn



Left and centre: Entrance to the site and track into the Estate

Right: Directional signs along the track point to accessible parking ahead with spaces for Holiday visitors. The main visitor parking areas are off to the right



Left: Reserved parking spaces for holiday visitor can be found in the accessible parking near the centre of the site

Right: View from holiday visitor parking to Welcome Hut ahead on left with the main entrance to the Estate ahead

Arrival & Parking Facilities

- There is no vehicular access to the front of Godolphin House at any time.
- Guests can drive to the rear of the House and offload luggage after 5pm on arrival.
- From the reserved parking places for holiday guests, drive down past the Welcome Hut and through the main gate.
- Then turn immediately right onto the track which runs up past a large barn, (18 on Estate Plan on page 2) currently (in 2023) under renovation.
- There may be a wooden gate with a "No Access" sign across this track if you arrive when the main site is closed. Just push the gate back and drive through.
- Follow the track as it curves left past storage buildings and a cottage. In front of you is a gap in a stone wall with a rope barrier across.
- Take down the rope barrier, drive through the gap and park in the yard (Shippons number 15 on the Estate Plan on page 2) at the back of the garden of Godolphin House. Put the rope barrier back in place behind you.
- Park in the yard to unload your luggage.
- You must have a torch if arriving at dusk, at night or in poor weather as there are uneven surfaces and unprotected drops from the garden and terrace down to the entrance door.

From the key safe, follow the path back up to meet the main path through the garden, do not try and cut direct through to the cottage door as there is an unmarked drop here.

- Access the garden through the large solid wooden gates. There is a wheeled luggage trolley in the unlocked log store at the bottom right of the garden next to the side door.
- Once luggage is unloaded, take your vehicles back to the allocated parking spaces near the Welcome Hut



Left: Track runs up past the large barn

Centre: Track runs along the back of barn past storage buildings

Right: There is a cottage-style building on the left of the track with the Holiday guest temporary parking and unloading area ahead



Above: the gap in the wall is just past the cottage style building pictured on the right above

Take down the rope barrier so that you can drive through into the yard behind the garden of Godolphin House



Left: Shippons yard for temporary parking and unloading

Right: Gates to the garden of Godolphin House



Looking down the garden, the log store with corrugated roof is on the right. The key safe is at eye level on the side of the grey wooden store. The entrance to the cottage is into the kitchen. This is the door next to the ground floor window on the right.

Getting in (and out) of the cottage

- The key safe is at eye level on the side of the grey lean-to store with the sloping roof on the right of the picture above
- The luggage trolley is in the log store, the building with the corrugated roof on the far right of the picture
- A sloping gravel path leads down to the terrace and then down some steps to the entrance door into the kitchen.
- Due to the changes in level and the steps, you will not be able to wheel the luggage trolley all the way to the door but it will go as far as the terrace.
- There is an outside light, but we recommend guests to bring a torch to set the correct lock combination on arrival. Keys to be returned to safe on final departure.
- Be aware that on this historic estate, external lighting is extremely limited and in most places non-existent. You will need a torch when walking around at dusk or in the evenings.

Getting around the cottage

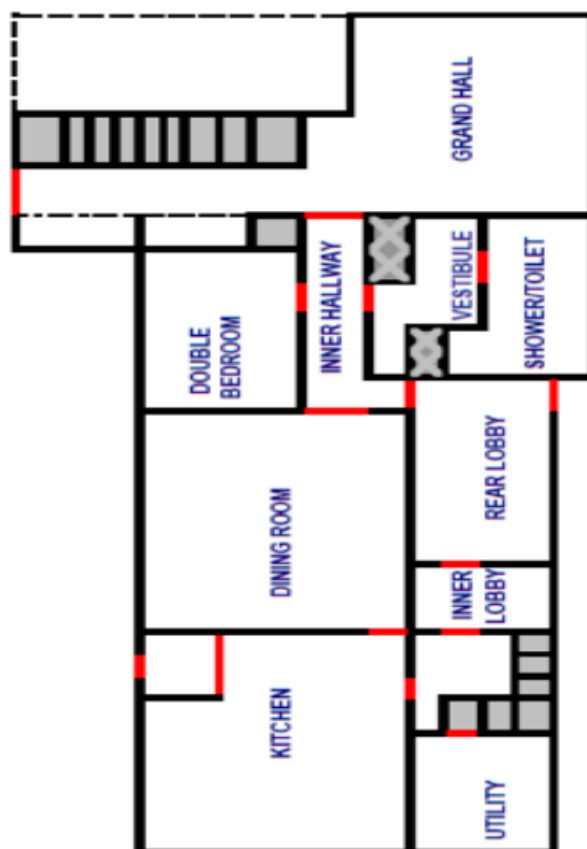
- Be aware that this historic building has a complex layout with interconnecting rooms and passageways across three wings and on two levels. It is not immediately clear where you are in the building and how to find your way around. There are also changes of level within the House including some unexpected steps immediately as you open some doors. There are some sloping floors and uneven floorboards.
- When you arrive at the House, we strongly recommend that everyone in your party walks around the building together so that you all get to know the layout

Due to the listed status of the building it is not possible to have window restrictors on any windows or hot surface stickers on the bathroom towel rails so care must be taken with young children

- Be aware that on the first floor next to the *Withdrawing Bedroom* there is a connecting door leading directly to a publicly accessible area. The thumb lock on this door should be kept locked at all times to prevent member accommodation.

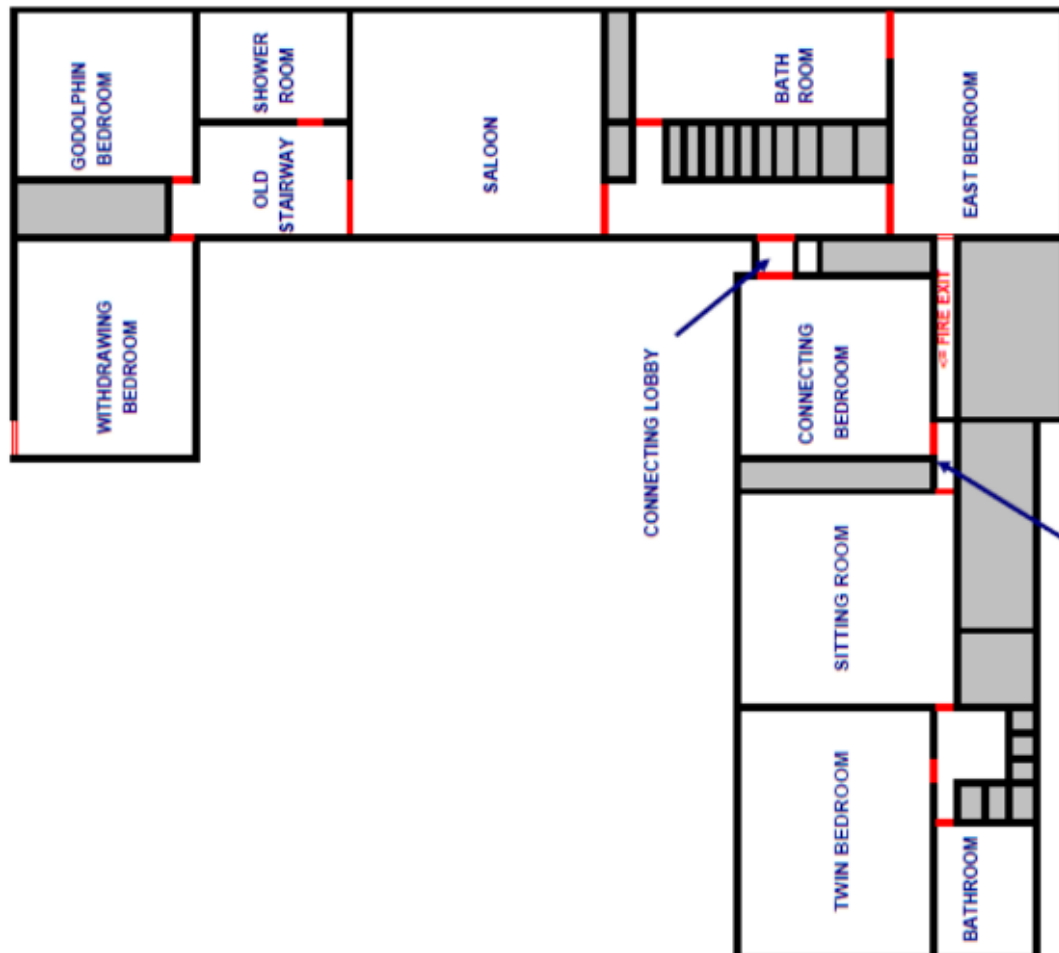
Ground Floor

- The plan on the right shows the ground floor wing of the House. It has been turned on its side to have the same alignment as the photograph of the House on page 4.
- The entrance for Holiday guests is into the kitchen via a small lobby. There are doors to the dining room and a stairwell with doors to a utility and inner lobby. Connecting doors and hallways on the ground floor lead to a double bedroom, shower room and then through to the *Grand Hall*.



First Floor

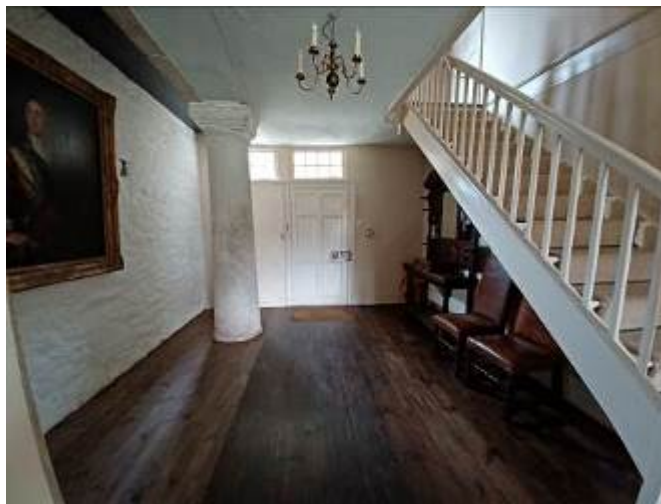
- From the *Grand Hall*, the stairway leads to large a landing with four doors off to *Saloon*, small connecting lobby, bathroom and *East*, a double bedroom. The bathroom and *East* bedroom are also connected internally. The saloon has door onto the *Old Stairway* landing which has three doors off, one to a shower room, one to *Godolphin* a double bedroom and one into *Withdrawing* a double bedroom. The small connecting lobby has door off into *Connecting* a double bedroom which has a door off to an inner lobby. The inner lobby has door into *Sitting room* which has a door off to rear stairway landing. The rear landing has doors off to a bathroom and a twin bedroom and a stairway leading down to the kitchen.
- The plan below has been turned on its side so as to have the same alignment as the plan of the Ground Floor and the picture of the House on page 4
- The door with the thumb lock leading to the publicly accessible area is next to the *Withdrawing Bedroom* seen on the left of the plan below. Keep this door locked at all times.



Grand Hall

Cloak Area

- Solid wooden door, 34.6 inches wide open inwards into cloak area. Granite threshold step 3.54 inches High. Glazed panel above doorway.
- Main walkway wooden floorboards. Sunken area 11.8 down to right-hand side with original stone flooring and two pillars.
- Chandelier with five lights on 2-way switch.
- Chest of drawers/Storage box measuring 66.1 inches Wide x 22.4 inches Deep x 39.3 inches High.
- Mirrored Hall stand down in sunken area – 51.1 inches Wide x 16.1 inches Deep x 90.55 inches High
- 2 x wooden chairs measuring 17 inches High



Grand Hall

Walkway opening from cloak area 1,800mm wide.

- Stone slab flooring.
- Three double wall lights.
- One double radiator. Non-functional fireplace.
- Sash window facing East, with deep sill, internal shutters measuring 90.5 inches Wide x 70.8 inches High.
- Barred, lead light window facing north with deep sill measuring 55.1 inches Wide x 74.8 inches High
- Barred, lead light window facing north measuring 55.11 inches Wide x 74.8 inches High
- Open "Pistol loop" in West wall.
- Refractory table measuring 130.70 Wide x 35.03 inches Deep x 2.7 inches High.
- Five wooden chairs measuring 44.0 inches seat High
- Writing bureau 38.9 inches Wide x 20.7 inches Deep x 38.97 High.
- Low occasional table measuring 47.6 inches Wide x 25.1 inches Deep x 18.5 inches High.
- High back wooden chair, with Rush seat and back measuring 19.29 seat high.
- Door to inner hallway and main stairway up to first floor



Inner Hallway

- Solid wooden door measuring 26.7 inches wide opens inwards from hall. Glazed panel above door.
- Quarry tiled flooring.
- Two wall lights on 2-way switch.
- Four doors off to shower/toilet room, double bedroom, dining room and rear lobby.



Double Bedroom

- Solid wooden door measuring 33.4 inches wide opens inwards from inner hallway.
- Parquet flooring with two rugs.
- Two table lamps, linked to switch. Standard lamp.
- Radiator measuring 30 inches Long x 2 inches Wide x 24 inches High. Non-functional fireplace.
- Lead light window to the West measuring 74.8 inches Wide x 74.8 inches High.
- Side table measures 31.4 inches Wide x 22.8 inches Deep x 25.9 inches High.
- Two bedside cabinets measuring 14.1 inches Wide x 13.7 inches Deep x 29.1 inches High.
- Blanket chest measuring 37.4 inches Wide x 13.3 inches Deep x 23.2 High.
- Wardrobe measuring 37.4 inches Wide x 17.3 inches Deep x 60.6 inches High.
- Contemporary, double, iron bedstead measuring 55.11 inches Wide x 78.7 inches Long x 23.6 inches High.



Shower/Toilet room

- Solid wooden door measuring 26.7 inches Wide opens inwards, from inner hallway, to vestibule. There is a glazed panel above the doorway.
- Vinyl flooring
- Wall light on 2-way switch.
- Radiator measures 31.5 inches Long x 2.5 inches Wide x 20 inches High. Disused fireplace.
- Roof light window.
- Solid wooden door measuring 31.4 inches wide opens outwards, from vestibule to shower room.
- Vinyl flooring.
- Ceiling down light, wall light and mirror light.
- Radiator and heated towel rail.
- Lead light window facing East measures 31.4 inches Wide x 31.4 High.
- Wall shaver socket.
- W.C. which measures 16.5 inches seat high. Wash basin measures 35.03 inches High.
- Step which measures 5.9 inches into shower cubicle 33.4 inches Wide x 27.5 inches Deep through 26.7 inches wide safety glass door.



Dining Room

- Solid wooden door measures 26.7 inches wide opens outwards, from inner hallway, Step 7.8 inches High up.
- Parquet flooring.
- Two chandeliers with eight lights on 2-way switch. Two table lights and two standard lamps.
- Lead light window facing West measures 74.8 inches Wide x 74.8 High.
- Lead light window facing West 74.8 inches Wide x 90.5 inches High.
- Inglenook fireplace with multifuel stove.
- Dining table measures 128.7 inches Long x 36.2 inches Wide x 27.1 knee High.
- Twelve high backed, leather upholstered, dining chairs measuring 17.7 inches seat High.
- Two benches, with cushion seats measuring 71.65 inches Wide x 16.5 inches seat High.
- Dresser sideboard 74 inches Wide x 17.3 inches Deep x 80.7 inches High.
- Table sideboard measuring 107.8 inches Wide x 26.7 inches Deep x 37 inches High.
- Trestle tray/table measuring 30.7 inches Wide x 40.5 inches Deep x 37 inches High fully opened.
- Door to kitchen



Kitchen

- Solid wooden door measuring 28.3 inches wide opens outwards, from dining room.
- Quarry tiled flooring.
- Two ceiling lights on 2-way switch. Wall light. Three, under cupboard, strip lights.
- Lead light window to the West measuring 55.11 inches Wide x 55.11 inches High.
- Two radiators. Inglenook fireplace with contemporary cast iron range, extractor/lights above.

-
- Kitchen floor cupboards with drawers under measuring 35.4 inches High worktops.
- Wall cupboards which measure 22.04 inches above worktops.
- Central island with cupboards measures 68.8 inches Wide x 39.3 inches Deep with 35.4 inches High worktop.
- Welsh dresser that measures 77.9 inches Wide x 20.4 inches Deep x 82.6 inches High.
- Wooden breakfast table which measures 35.8 inches Wide x 77.95 inches Long x 26.3 inches knee High.
- Five wooden kitchen chairs, one is a carver measuring 17.7 inches seat High.
- Two built-in benches measuring 21.2 inches seat High.
- Fridge with a Freezer in utility area, Dishwasher, Toaster, Microwave and Two Kettles.
- Door to rear porch and door to rear stairwell.



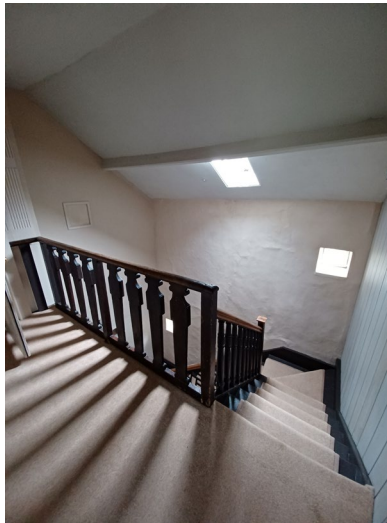
Rear Porch

- French doors with glazed panel surround which measures 29.5 inches doorway width, open outwards, from kitchen.
- Quarry tiled flooring.
- Ceiling light.
- Solid wooden Back door which measures 37.4 inches wide, opens inwards. Granite threshold measuring 23.6 inches high to semi covered door step area giving access to cottage garden



Rear Stairwell

- Solid wooden door measuring 29.52 inches wide opens inwards, from kitchen.
- Vinyl flooring.
- Radiator.
- Two wall lights on 2-way switch and another wall light on a 2-way switch.
- Two square porthole type windows measuring 13.7 inches Wide x 13.7 inches High facing East.
- Turning stairway with 17 carpeted steps which measure 33.07 inches Wide x 7.87 inches High to first floor rear landing.
- 2 turning steps, 7 straight, 2 turning, 6 straight onto a Juliet landing. Banister that measures 35.4 inches High.
- Two doors from stairwell, one to rear inner lobby and one to utility room



Utility Room

- Solid wooden door measuring 29.9 inches wide opens outwards, from under rear stairway.
- Quarry tile flooring.
- Recessed down light and wall light on 2-way switch.
- Window, with deep sill, internal shutters measuring 31.4 inches Wide x 55.11 inches High facing East.
- Washing machine, Tumble dryer and tall, double door Freezer



Rear Lobby and inner Lobby

- Glazed wooden door measuring 31.4 inches wide opens outwards, from inner hallway.
- Stone slab flooring.
- Radiator.
- Two wall lights are which are linked to ceiling light in inner lobby, on 2-way switch.
- Lead light window with a deep sill measuring 39.37 inches Wide x 39.37 inches High. East aspect. Two more windows, same size, very high up.
- Welsh dresser measuring 59.8 inches Wide x 16.92 inches Deep x 82.676 inches High.
- Solid wooden door 31.8 inches wide opens inwards to public, East garden. Glazed panel above.
- Stone slab flooring.
- One ceiling light, which is linked to wall lights in rear lobby, on 2-way switch. • Solid wooden door 31.8 inches wide opens inwards to rear stairwell.



Main Stairway and landing

- Banister measuring 35.4 inches high.
- 15 steps measuring 42.1 inches Wide x 7.87 inches High, straight up from grand hall.
- Traditional stair carpet secured by rods.
- Juliet landing with banister measuring 35.4 inches high.
- Wooden floorboards and rug on landing.
- Radiator.
- Two chandeliers with six lights on 2-way switch.
- Lead light window with deep sill measuring 55.11 inches Wide x 74.8 inches High. South aspect.
- Side table that measures 37.9 inches Wide x 17.7 inches Deep x 25.59 inches High.
- Four doors off landing to “Saloon”, small connecting lobby, bathroom and “East” bedroom. (The bathroom and “East” bedroom are also connected internally).



East Bedroom

- Solid wooden door measuring 35.4 inches wide opens inwards from main landing.
- Wooden floorboards with three rugs.
- One double radiator. Large, non-functional fireplace.
- Two standard lamps on 2-way switch. Two table lamps. Non-functional, antique, Venetian coloured glass chandelier.
- Triple paned sash window measuring 90.5 inches Wide x 90.5 inches High with internal shutters facing East.
- Two lead light windows with deep sills that measures 55.2 inches Wide x 74.8 inches High facing North.
- Wooden round table that measures 47.2 inches Dia x 72 inches High. Two, cushion seated chairs that measure 17.3 inches seat High.

-
- Writing desk that measures 60.2 inches Wide x 24.4 inches D x 31.1 inches High.
Cushion seated chair 18.8 inches High.
- Blanket chest measuring 57.8 inches Wide x 24.4 inches Deep x 20.8 inches High.
- Full length Cheval mirror measuring 17.3 inches Wide x 64.17 inches High.
- Two bedside wooden cabinets measuring 15.35 inches Wide x 14.17 inches Deep x 29.1 inches High.
- Bow fronted chest of drawers (2 over 4) measuring 49.6 inches Wide x 23.2 inches Deep x 52.6 inches High.
- Wardrobe/mock chest that measures 49.9 inches Wide x 24.2 inches Deep x 92.5 inches High.
- Canopied four post bed that measures 62.9 inches Wide x 33.4 inches Long x 33.4 inches High with a Canopy measuring 2,450mm High.
- Fire exit door and door to bathroom.



Front Bathroom

- Solid wooden door measuring 33.4 inches wide opens outwards from “East” bedroom.
- Wooden floorboards and vinyl flooring around bath.
- Two radiators and electric heated towel rail.
- Two wall lights and a mirror light linked on 2-way switches (located outside bathroom doors)
- Two lead light windows with deep sills measuring 55.11 inches Wide x 74.8 inches High facing North.
- Wooden wash stand measuring 42.1 inches Wide x 21.65 inches Deep x 32.2 inches High.
- Wooden chair measuring 17.3 inches seat High.
- Freestanding wooden towel rail measuring 25.98 inches Wide x 30.7 inches High.
- Freestanding oval acrylic bathtub measuring 42.1 inches Long x 30.7 inches Wide x 22.04 inches High with mixer/shower taps.
- W.C. measures 18 inches seat High with wash basin measuring 30.7 inches High.
- Two shaver sockets.
- Solid wooden door measures 33.4 inches wide opens inwards to main landing.



Saloon

- Solid wooden door measuring 37.4 inches wide opens inwards from main landing.
- Wooden floorboards and four rugs.
- Four double radiators. Two large, non-functioning fireplaces.
- Four table lamps all on 2-way switch. Three standard lamps.
- Three lead light windows with deep sills measuring 55.11 inches Wide x 74.8 inches High facing North.
- Three lead light windows with deep sills measuring 55.11 inches Wide x 74.8 inches High facing South.
- Four side tables supporting table lamps measuring 28.4 inches High.
- One side table measuring 31.49 inches Wide x 18.11 inches Deep x 29.13 inches high

- One side table measuring 26.7 inches Wide x 18.11 inches Deep x 29.9 inches High
- One side table measuring 21.5 inches Wide x 16.5 inches Deep x 29.9 inches High
- One, bow fronted, side cabinet 17.1 inches Wide x 13.7 inches Deep x 27.1 inches High
- One table measuring 46.85 inches Wide x 46.85 inches Deep x 28.74 inches High.
- Two stools measures 19.6 inches seat High.
- One bookcase measuring 53.1 inches Wide x 66.1 inches High.
- Two Three seater settees measuring 17.1 seat High.
- Four wingback chairs 17.1 seat High.
- One, bow fronted, side cabinet measuring 17.1 inches Wide x 13.7 inches Deep x 27.1 inches high
- Door to old stairway landing



Old Stairway Landing

- Solid wooden door 37.4 inches wide opens inwards from “Saloon”.
- Wooden floorboards and rug. There is a section of floorboards, at right angles to the main, denoting the old West stairway.
- One double radiator.
- Two chandeliers with six lights on 2-way switch.
- Two lead light windows with deep sills measuring 55.11 inches Wide x 74.8 inches high. South aspect.
- Side table measuring 35 inches Wide x 17.1 inches Deep x 29.5 inches High.
- Round side table measuring 22.4 inches Dia x 28.34 inches High.
- Cushion seated chair 17.3 inches seat High
- One bookcase measuring 82.2 inches Wide x 15.7 inches Wide x 66.1 inches High.
- Original banister 39.3 inches high
- Doors off landing to Shower room and two Double bedrooms.



Shower Room

- Solid wooden door 29.9 inches wide opens inwards from old stairway landing.
- Wooden floorboards and vinyl flooring around shower cubicle.
- One double radiator and electric heated towel rail. Non-functioning fireplace.
- Three wall lights with the switch outside shower room. Mirror with light/shaver socket above.
- Lead light window measuring 55.11 inches Wide x 74.8 inches High with seat below measuring 18.1 seat High facing North.
- Shower cubicle with two solid walls and two safety glass panels measuring 29.5 inches Wide x 33.4 Deep with a 7.87 high step.
- Cushion seated chair measuring 17.32 inches seat High.
- W.C. measuring 17 inches seat High and the wash basin measuring 33.8 inches High.
- Separate shaver socket.



Withdrawing bedroom

- Solid wooden door measuring 35.4 inches wide opens outwards from old stairway landing.
- Wooden floorboards and three rugs.
- One double radiator and non-functioning fireplace.
- One standard lamp and two table lamps linked to a single switch. One other standard lamp.
- Lead light window with deep sill measuring 70.86 inches Wide x 74.8 inches High facing East.
- Sideboard measuring 53.1 inches Wide x 25.5 inches Deep x 34.6 inches High.
- Two cushion seated chairs measuring 17.3 inches seat High.
- Freestanding wooden towel rail measuring 29.9 inches Wide x 35.4 inches High.
- Blanket chest measuring 55.11 inches Wide x 18.5 inches Deep x 29.1 High.
- Chest of drawers (2 over 3) measuring 40.55 inches Wide x 18.8 inches Deep x 40.55 inches high

- .
- Two wooden bedside cabinets measuring 18.8 inches Wide x 16.9 inches Deep x 29.1 inches High.
- Full length Cheval mirror measuring 17.3 inches Wide x 62.2 inches High.
- Wardrobe/mock chest 90.5 inches Wide x 20.36 inches Deep x 86.6 inches High.
- Canopied four post bed 62.9 inches Wide x 78.7 inches Long x 31.4 inches High with the Canopy measuring 86.6 inches High.
- Fire exit door with thumb lock. Keep locked to prevent public access.



Godolphin Bedroom

- Solid wooden door measuring 35.4 inches wide opens inwards from old stairway landing.
- Wooden floorboards and two rugs.
- Two double radiators and non-functioning fireplace.
- One standard lamp and one table lamp linked to a single switch. Another standard lamp and table lamp.
- Two lead light windows measuring 55.11 inches Wide x 74.8 inches High facing North
- Dressing table 47.2 inches Wide x 21.25 inches Deep x 29.5 inches High.
- Cushion seated chair measuring 17.3 inches seat High.
- Upholstered wingback chair measuring 17.3 inches seat High.
- Freestanding wooden towel rail 25.98 inches Wide x 34.6 inches High.
- Blanket chest measuring 54.3 inches Wide x 21.6 inches Deep x 29.9 inches High.
- Full length Cheval mirror measuring 15.7 inches Wide x 62.9 inches High.
- Two bedside cabinets measuring 22.8 inches Wide x 23.2 inches Deep x 29.9 inches High.
- Bow fronted chest of drawers (2 over 4) measuring 42.1 inches Wide x 21.6 inches Deep x 49.6 inches High.
- Wardrobe measuring 94.6 inches Wide x 23.6 Deep x 75.6 inches High.
- Canopied four post bed measuring 62.9 inches Wide x 21.6 inches Long x 49.6 inches High with a Canopy measuring 90.5 inches High.
- One wall has drapes and panels behind which an original, historic, wall covering is seen



‘Connecting Lobby’

- Solid wooden door 33.46 wide opens outwards from main stairway landing.
- Wooden floorboards with three steps measuring 7.8 inches High. There is a assistance handrail to one side.
- Ceiling light on 2-way switch.
- Glass panels to sides with facing East and West.
- Wooden chair that measures 17.3 inches seat High.
- Door to bedroom.



Connecting Bedroom

- Solid wooden door measuring 33.4 inches wide opens inwards from connecting lobby.
- Fitted carpet flooring.
- One radiator and non-functioning fireplace measuring 2.8 inches Wide X 39.5 inches Long X 24 inches High.
- One ceiling light and two table lamps.
- Lead light window measuring 55.11 inches Wide x 51.8 inches High with cushioned seat below that measures 22.83 inches seat High facing West.
- Chest of four drawers with mirror measuring 38.1 inches Wide x 23.6 inches Deep x 35.4 inches High.
- Full length Cheval mirror measuring 18.11 inches W x 59.05 inches High.
- Bedside cabinet measuring 15.7 inches W x 14.7 inches Deep x 27.5 inches high.
- Bow fronted wardrobe measuring 41.7 inches Wide x 25.5 inches Deep x 74.8 inches High.
- Freestanding wooden towel rail that measures 27.5 inches Wide x 31.2 inches High.
- Double bed measuring 55.11 inches Wide x 78.7 inches Long x 25.5 inches High.
- Door, with glazed panel above, to rear lobby.



Rear Lobby (Upper)

- Solid wooden door measuring 32.6 inches wide opens inwards from connecting bedroom.
- Fitted carpet flooring.
- Two wall lights (one in the disused lift area on Fire Exit [one-way] from "East" bedroom)
- Door to "Sitting" room.



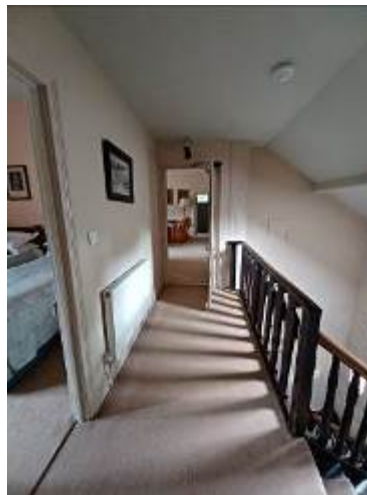
Sitting Room

- Solid wooden door measuring 28.7 inches wide opens outwards from rear lobby (Upper).
- Fitted carpet flooring.
- Two radiators. Inglenook fireplace with multifuel stove.
- Three standard lamps on 2-way switch.
- Two lead light windows with deep sills measuring 55.11 inches Wide x 11.81 inches High facing West.
- One side table measuring 18.11 inches Wide x 13.1 inches Deep x 28.34 inches High.
- One side table measuring 26.77 inches Wide x 16.12 inches Deep x 31.1 inches High.
- One side table 22.64 inches Wide x 18.11 inches Deep x 29.52 inches High.
- Wooden dining table that measures 48.03 inches Long x 31.49 inches Wide x 24.01 inches knee High.
- Two cushion seated chairs measuring 17.32 inches seat High.
- Two easy chairs 17.32 inches seat High.
- Two three seater settees measuring 17.32 inches seat High.
- Large cushioned stool measuring 59.05 inches Long x 23.6 inches Wide x 20.9 inches seat High.
- Log basket.
- TV
- Door to rear landing.



Rear Landing

- Solid wooden door measuring 29.1 inches wide opens outwards from “Sitting” room.
- Fitted carpet flooring.
- One radiator.
- One wall light on 2-way switch. One permanent mini-down light.
- One roof light window. East aspect.
- Stairway to rear stairwell.
- Doors to bathroom and twin bedroom.



Rear Bathroom

- Solid wooden door measuring 31.49 inches wide opens inwards from rear landing.
- The interior layout is “U” shaped on two levels. Vinyl flooring and three wooden, turning, steps that measure 7.87 inches High between levels.
- One radiator. Electric heated towel rail.
- Three wall lights.
- One window with deep sill that measures 31.49 inches Wide x 31.49 inches High facing East.
- W.C. which measures 16.5 inches seat High and a wash basin measuring 34.6 inches High. Shaver socket on upper level.
- Bath measuring 66.53 inches Long x 27.55 inches Wide x 20.47 inches High with mixer/shower taps on lower level



Twin Bedroom

- Solid wooden door measuring 31.49 inches wide opens inwards from rear landing.
- Fitted carpet flooring.
- Two radiators and non-functioning fireplace.
- One ceiling light and two table lamps.
- Lead light window with deep sill measuring 47.2 inches Wide x 51.18 inches High facing West.
- Two bedside cabinets measuring 15.47 inches Wide x 12.99 inches Deep x 29.12 High.
- Chest of drawers (2 over 3) measuring 37 inches Wide x 23.2 inches Deep x 38.1 inches High.
- Full length Cheval mirror measuring 19.68 inches Wide x 61.81 inches High.
- Freestanding wooden towel rail measuring 24.4 inches Wide x 35.43 inches High.
- Wardrobe measuring 80.70 inches Wide x 24.8 inches Deep x 71.6 inches High.
- Pair of single beds measuring 39.37 inches Wide x 78.7 inches Long x 27.5 High.



Garden

- The private walled garden is on the south side of the house. It has slightly sloping grassed areas, gravel paths and terracing near the house.
- The stone terracing is uneven in places and has changes in levels.
- There is a door through to the publicly accessible courtyard of Godolphin House which is kept locked when Holiday guests are staying.
- On the terrace is a large hardwood garden table which measures 118.11 inches Wide x 39.9 inches Deep x 27.5 inches knee High together with ten chairs and two carvers that measure 17.7 inches seat High.
- Guests can also access the main (public) garden from the rear lobby back door.



Looking along the terrace to the picnic table and kitchen door beyond



Left: Looking back up the garden showing changes of level on the terrace

Right: The door to the publicly accessible courtyard is kept locked when Holiday guests are staying



Additional Information

Facilities at all cottages

The National Trust aims to expand the list of accessible /equipment/items available at each cottage and these may include

- Cordless kettle
- Hollowfibre bedding
- Chair with armrests
- Good reading light
- Large handle vegetable peeler
- Easy tin opener
- Non-slip mat for bath/shower
- Non-slip place mat
- Easy jar opener
- Information in alternative formats (on request)

Please note that we cannot guarantee that all items will be available at the time of your visit. Please enquire at the time of booking regarding any particular requests.

Specialist equipment

Other specialist equipment such as wheelchairs, bath seats, toilet frames etc may be available for loan or purchase from the local Red Cross loan centre. Please check this out before booking the Cottage and contact us if you require further information.

<https://www.redcross.org.uk/get-help/borrow-a-wheelchair>

<https://www.redcross.org.uk/get-help/hire-a-toilet-aid>

Future Plans to improve Access to National Trust Holiday Accommodation

- We are currently in the process of writing accessibility guides for all our holiday cottages and bunkhouses and improving access over time for all our guests. All feedback is very helpful in informing us of ways in which we can improve access. We welcome any comments or ideas from you about access at this cottage and thank you for taking the time to do this. Please do this in the most convenient way for you. See contact details below or information on website.

About the Accessibility Guide

- This Accessibility Guide is intended to provide key information about the accommodation that may be particularly relevant to guests with disabilities. Please contact us prior to booking if you would like information that is more specific and we will be happy to oblige.
Email: holiday.enquiries@nationaltrust.org.uk
Phone: 0344 8002070

Access for All at the National Trust

- The Access for All office works to improve access at all National Trust accommodation and properties. The office welcomes comments and ideas on improving access.
Phone: 01793 818531
Email: accessforall@nationaltrust.org.uk

April 2023