

National Trust Cottages Accessibility Guide

Cottage Ref: 009018

Introduction

Silverthwaite is a large elevated 5 bedroomed house, built in the early 1900's, and nestled in the heart of the Lake District.

The Cottage is arranged as follows:

Ground Floor:

- Entrance porch leading from which access is gained to:
- Inner hallway with access to kitchen and sitting room
- Large living room/diner with access to formal dining room
- Access to the living room is also gained from the kitchen
- Access to first floor via 14 steps on curved wooden staircase, steps 950mm wide, 300mm deep with 2 grab handles at the bottom and 1 at the top. A wooden handrail is on the right at a height of 900mm from the floor.

First Floor:

- Accessed via wooden stairway from inner lobby
- Long landing with floorboards, 940mm at its narrowest, with access to:
- First king bedroom with en-suite shower room and w/c
- Second king bedroom with en-suite shower room and w/c
- Further double bedroom
- Two single bedrooms
- Bathroom with large bath and w/c

Pre-Arrival

- See the main webpage for booking and location details.
- Please contact us prior to booking if you have any specific access requirements.
- Directions provided with booking

Arrival & Parking Facilities

The driveway to the property is accessed from the main road through a single wrought-iron gate. A winding uphill driveway leads to a parking area outside the main entrance to the property which can comfortably take 2 vehicles. There is further parking outside the garage situated halfway along the driveway. Please note, there is a sharp uphill bend on the driveway which will need care in adverse weather conditions.



Getting in (and out) of the cottage

The main entrance is accessed via the parking area. The entrance has a 100mm step up into the porch. There is a further 140mm step up to the main entrance leading to the inner hallway. The open entry porch is 1000mm wide whilst the entrance doorway is 830mm. There is a very shallow lip to the entrance doorway of 20mm.

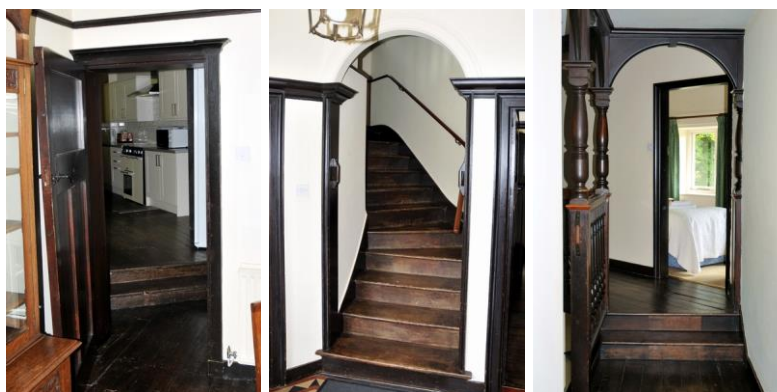
Getting around the cottage

Ground floor:

- The ground floor is on two levels with two steps of 150mm high, 800mm wide, 800mm deep each leading into the main living room either via the kitchen or via the inner hallway.
- Door width is 800mm. There is a grab handle on the right of the door frame.

First floor:

- Likewise, the first floor is also on two levels with two steps separating the two halves of the landing area of 150mm height, 280mm deep and 1030mm wide. On the lower side are the en-suite bedrooms, whilst the remaining bedrooms and main bathroom are situated on the upper level.



Inner Lobby

- Main access hub to kitchen and sitting room via an inner hallway, stairs to 1st floor and doorway to living and dining rooms.
- One wicker armchair with seat height of 380mm and arm height of 610mm.
- Floor is tiled.
- There is a further wooden bench in the porch (400mm seating height).

Kitchen

- Height of worktop is 910mm
- There are a range of appliances including an electric range and oven, dishwasher, washing machine, large fridge and microwave. The microwave is situated on the worktop.
- The door is 830mm in width.
- Slate and floor boarded floor.

Main Living Room

- 2 x three-seater settees with seat height 450mm and arm height of 560mm.
- Day dining table with a clearance of 700mm and 4 chairs with 440mm seat height.
- Wood burner.
- TV with DVD player and satellite box.
- 2 x coffee tables at 500mm and 620mm height.
- 1 x small settee with seat height 440mm and arm height of 550mm.
- 1 x occasional chair with seat height 490mm.
- Floorboards with 2 rugs.

Snug

- 2 x occasional chair with seat height 440mm and arm height of 600mm.
- 1 x two-seater settee with seat height of 440mm and arm height of 600mm.
- Coffee table with 520mm height.
- Wood burner.
- Door width is 830mm.
- Floorboards with rug.

Formal Dining Room

- Large formal dining table and dining chairs. Table leg clearance is 730mm with dining seats at a seating height of 490mm plus 2 x carver chairs with arm height of 690mm.
- Sofa with a seat height of 380mm and arm height of 560mm.
- Door width of 830mm.
- Floorboards with rug.

First King Bedroom

- Double bed 2000mm length x 1500mm width x 500mm high
- Bedside cabinets at 730mm height with bedside lights
- Rocking chair with seat height 400mm and arm height 560mm
- Dressing table with height of 740mm
- Floorboards with rugs
- Access to en-suite shower room through door width of 830mm
- En-suite shower comprises shower cubicle, w/c and wash hand basin
- W/C height 400mm, sink height 820mm
- Side opening shower unit with 460mm opening and a 150mm step-up
- Floorboards

Second King Bedroom

- Double bed 2000mm length x 1500mm width x 560mm high
- Bedside cabinets of 600mm height with bedside lights
- Chaise with 330mm seat height
- Rocking chair with 440mm seat height and arm height of 690mm
- Carpeted
- Access to en-suite shower room through door width of 700mm
- En-suite shower comprises corner shower cubicle, w/c and small corner sink unit
- W/C height 400mm; Sink height 860mm
- Corner shower unit with 460mm opening and a 110mm step-up

Double Bedroom

- Double bed 1900mm length x 1350mm width x 500mm high
- Single bedside cabinet of 670mm height with single bedside light
- Chest of drawers 990mm height with bedside light
- Floorboards

First Single Bedroom

- Single bed 920mm wide x 1900mm length x 680mm high
- Bedside cabinet of 670mm height with bedside light
- Single wicker armchair with seat height of 380mm and arm height of 610mm.
- Carpeted

Second Single Bedroom

- Single bed 920mm width x 1900mm length x 600mm high
- Bedside cabinet 670mm in height with bedside light
- Single wooden chair with seat height of 430mm
- Carpeted
- Chest of drawers 760mm in height

Main Bathroom

- W/C, basin and roll-top bath
- W/C height 410mm; Sink height 820mm
- The bath is 1130mm long and 600mm wide, internally and 600mm high
- There is a 100mm step-up to the original old wooden bench w/c with lid. This is ornamental and not in use.
- Floorboards.

Garden

- The grounds comprise of lawned gardens, woodland and seating areas.
- The garden area running along the front of the property contains a steep bank of approximately 4 metres. Small children should always be supervised.

- A flagstone path leads around the front of the property where there are tables and chairs with 690mm leg clearance and seat height of 430mm plus a further stone seating area to the corner of the property. Care is needed as the stone seating area is contained within a small-height wall which has a steep drop on the other side. Seat height 330mm with overall wall height of 730mm within the seating area. The remaining wall can be as low as 430mm. Therefore, children will need to be supervised in this area. The path is uneven and can be slippery when wet. It is jet washed on a regular basis and treated with anti-algae.
- The woodland contains a series of natural pathways (not suitable for anyone with walking disabilities) and is accessed from the garden via 7 stone steps, at the foot of which is a stone flagged bridge over a beck with an unprotected drop on either side. These paths are uneven and can be slippery when wet.
- A further lawned area leads to a gravel path to the side of the property on which stands a building block containing an outside w/c, storage units and a storeroom housing the central heating boiler and electricity consumer units. A further access door leads to a gravel path around the rear of the property leading back to the parking area.



Additional Information

- Assistance dogs are welcome at all our cottages
- In the event of a fire, it is the responsibility of the guests to evacuate themselves. Vibrating fire/smoke detectors are available if requested at time of booking. Please contact us if you have any other specific access requirements in this respect.

Facilities at all cottages

In addition to the standard equipment and facilities, each cottage is equipped with the following:

- Cordless kettle
- Chair with armrests in dining room and living room.
- Good reading light
- Large handle vegetable peeler
- Easy tin opener
- Non-slip mat for bath/shower
- Non-slip place mat
- Easy jar opener
- Information in alternative formats (on request)

We aim to provide these items in all cottages but please check when booking as to their availability and to check if new items have been added to the list.

Specialist equipment

Other specialist equipment such as wheelchairs, bath seats, toilet frames etc may be available for loan or purchase from the local Red Cross loan centre. Please check this out before booking the Cottage and contact us if you require further information.

<http://www.redcross.org.uk/standard.asp?id=89425>

Future Plans to improve Access to NT Holiday Cottages

- We are currently in the process of writing accessibility guides for all our holiday cottages and improving access over time for all our guests. All feedback is very helpful in informing us of ways in which we can improve access to all our cottages. We welcome any comments or ideas from you about access at this cottage and thank you for taking the time to do this. Please do this in the most convenient way for you. See contact details below or information on website.

About the Accessibility Guide

- This Accessibility Guide is intended to provide key information about the cottage that may be particularly relevant to guests with disabilities. Please contact us prior to booking if you would like information that is more specific and we will be happy to oblige.

Email: cottages@nationaltrust.org.uk

Phone: 0344 800 2070

Access for All at the National Trust

- The Access for All office works to improve access at all National Trust cottages and properties. The office welcomes comments and ideas on improving access.

Phone: 01793 818531

Email: accessforall@nationaltrust.org.uk

March 2022