

National Trust Cottages Accessibility Guide

The White Cottage

Port Gaverne

Port Isaac

Cornwall



Cottage Ref: 011038

Introduction

- Located just yards from the sea, The White Cottage boasts a historic character including many original features. The secluded, walled garden can be a real suntrap.
- The cottage is heated by an air source heat pump system in conjunction with radiators. There is also a wood burning stove in the sitting room and dual fuel radiators in the en-suite and main bathroom.
- There is an emergency fire exit via double doors on the first-floor landing.
- In the event of power failure emergency lighting is provided on the landing and downstairs hallway.
- The spacious cottage is on two floors and includes a downstairs bedroom and a separate downstairs shower/WC.
- Upstairs there are two further bedrooms, one of which is ensuite plus a separate bathroom.
- The cottage is furnished for six people and has a cot and highchair.

Pre-Arrival

- See the main webpage for booking and location details.
- Please contact us prior to booking if you have any specific access requirements.
- Directions provided with booking.

Approach

- The drive into Port Gaverne is relatively steep down narrow winding lanes which can become busy during the season.

Arrival & Parking

- There is parking for one car at the front of the cottage. The front door is three metres from the car parking space.
- The car parking area is level and gravelled but space to get out of the car is limited.
- The key safe is to the right of the front door. It is operated by a combination lock mechanism where the dials need to be turned to the cottage combination code. There is a sensor light above the door. A torch is recommended, especially if arriving in the dark, as the numbers on the lock can be difficult to see.



Car parking area for one vehicle

- There is a second car parking space in the Port Gaverne Fish Cellars Courtyard, Rashleigh Cellars, approximately 450metres away. The car parking space on the left of the entrance is marked for The White Cottage. (see plan on page 3)
- At the entrance to this private courtyard is a chain link barrier and cone to deter the public from parking here. Unclip the chain to drive into the courtyard and put the chain and cone back in place afterwards.
- This is an historic part of the hamlet. The surface of the courtyard is uneven and can be potholed. The area is unlit. Guests will need a torch to walk back to the cottage at night.



The second car space is just to the left after the chain



Getting in (and out) of the cottage

- There is a high step up into the cottage of 230mm.
- The clear opening width of the front door is 760mm.
- The door opens into an entrance hallway which narrows to 700mm wide.
- The light switch is on the right-hand side at a height of 1350mm.
- The thermostat for the air source heating is on the wall of the hall at a height of 1400mm.
- There is a large wall mirror along one side of the hallway.
- There is a French door from the sitting room which opens into the garden.
- There is an alternative access to the car parking area from the garden through large wooden gates. There is a Yale lock which can be opened from the garden side without a key.



Step up to front door



View from front door to stairs



Bottom of stairs

Getting around the cottage

Ground floor:

- Flagstone floor in sitting/dining room with scatter rug. Flagstone floors also in kitchen and shower/utility room.
- Carpeted double bedroom leading off the dining area.
- A door opens from the kitchen into the sitting/dining room. From this door there is a width of just 700mm before a step of 130mm leads down into the sitting room. The nosing on this step is painted white to make it more visible.
- French doors in sitting room open with wooden threshold 150mm and a further step outside of 150mm to the garden path.
- The minimum clear door opening width is 700mm.



Step from sitting room to kitchen.

First Floor

- Staircase with handrails to right-hand side. The first handrail has a height of between 840mm-1090mm from each tread. The second handrail has a height of between 1040mm-1140mm from each tread.
- Stairs, bedrooms, and landing are carpeted. There is luxury vinyl flooring in the bathroom and en-suite.
- Hinged, wooden built-in stair gate at top of stairs.
- The stairs are reasonably steep, minimum width of stairs 680mm with a turn on the fifth step. 3 more deep steps. 8 steps in total.
- Step up into first double bedroom which is immediately off the stairs. Stable door which can be closed to stop children running straight out and falling down this deep step.
- The bathroom is on the left-hand side after this bedroom.
- The main bedroom with the en-suite bathroom is straight ahead.
- Very spacious en-suite bathroom with two large, low windows and a slightly sloping floor. Day and night roller blinds to each window.
- There are French doors on the right-hand side of the landing leading to a narrow, gravelled path running alongside the rear of the building. This route behind the cottage serves a fire escape from the first floor.

Kitchen

- The main light switch is to the right of the door at a height of 1350mm
- Eight ceiling spotlights and under-cupboard lighting
- Double ceramic sink. Mixer tap with lever handles
- Built in single oven with grill, controls 1320mm high
- Separate ceramic hob
- There is a cooker hood with light above the ceramic hob
- Height of granite worktops are 900mm from floor level
- Integrated under-counter fridge, freezer, and dishwasher
- Microwave, cordless kettle, and toaster
- Roberts' radio



Sitting Room

- The main light switch is to the left of the door at a height of 1420mm.
- A further light switch is to the right of the downstairs bedroom door at a height of 1380mm.
- Two standard lamps and two five-armed ceiling lamps
- French doors and long window offering ample natural light, looking over secluded garden.
- One two-seater and one three-seater sofa both with a seat height of 470mm, back height of 500mm. Small armchair 420mm seat height.
- Multi-fuel fire.
- 32 inch screen TV with separate DVD.
- Radio.
- A pine dining table with a knee clearance of 640mm.
- Six wooden chairs with seat and back height of 460mm – no arms.



Downstairs shower room/utility room

- The main light switch is in the hallway to the right of the bathroom door at a height of 1350mm.
- Six ceiling spotlights plus one in shower cubicle.
- Inside a large wall cupboard there is a washing machine with tumble dryer stacked on top at a height of 1650mm to dials.
- Step into enclosed shower cubicle is 160mm high.
- Electric shower with controls at a height of 1400mm.
- Pull cord for electric shower at a height of 1500mm.
- Countertop hand basin is 850mm high and has corner twist tap.
- Mirror light and shaver point above hand basin.
- The WC has a seat height of 420mm.
- Clothes hooks at a height of 1800mm.



Stairs and landing



Top of the stairs with a bedroom immediately on the left.
The stairgate shown leads to the upper landing area to the bathroom and the master bedroom.



Stairs looking down from the landing area.

Double Bedroom (or twin)

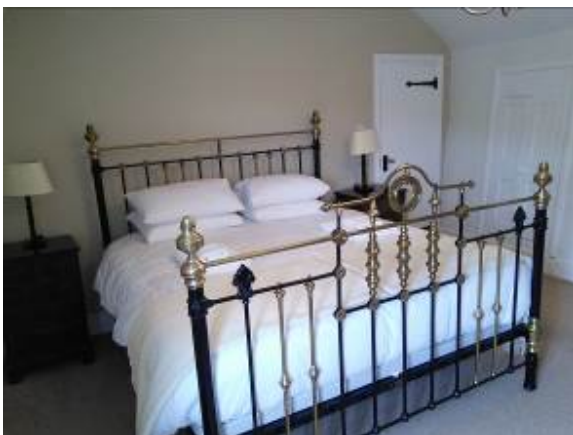
- The main light switch is the right of the door at a height of 1280mm
- Pendant central light fitting
- 6' double divan bed which can be twin upon request
- Bed length is 1900mm, bed height is 700mm
- Bed in centralised position
- No under-bed clearance
- Cupboard with clothes hanging rail at a height of 1480mm.
- Five-drawer chest and two bedside cabinets with bedside lamps
- Wooden chair with arms with a seat height of 400mm and back height of 700mm
- Two small wall mirrors





Master bedroom with en-suite bathroom

- The main light switch is to the right of the door at a height of 1300mm.
- One centre ceiling light with three arm light fitting
- 6 ft double iron bedstead in central position in the room
- Good circulation space around bed
- Bed length is 2000mm and bed height 670mm with a firm mattress
- The clearance below the bed to the floor is 210mm.
- Two bedside cabinets with bedside lamps
- Five-drawer chest
- Windsor chair with seat height of 440mm and a back height of 740mm
- Large wall mirror
- Large window looking over the garden and out to sea inle.
- Gentle slope to the floor in this room.
- Door to right of bed which leads to large en-suite bathroom with walk in cupboard with shelves and hanging rails for clothes
- Clothes hook on back of door



En-suite Bathroom

- The main light switches are outside the en-suite bathroom door to the left, at a height of 1250mm.
- The room is lit by recessed LED ceiling lights and two wall lights.
- Double ended, freestanding bath with traditional floor standing twist bath taps no handgrips. The bath has a minimum height of 620mm.
- Spacious walk-in shower with anti-slip base, fixed and adjustable shower head.
- The shower has a minimum opening access of 600mm. There is a step up to the shower of 160mm.
- The controls are at a height of 1120mm-1320mm.
- WC with a seat height of 430mm and a lever flush.
- Floor standing vanity unit with inset basin and soft close cupboards and drawers below.
- The hand basin has mixer twist taps, and the vanity unit has a height of 870mm.
- Large Mirror over hand basin and shaver point to the right of the basin.
- Chair with seat height of 460mm and back height of 470mm.
- The walk-in wardrobe has two deep shelves and a clothes hanging rail at a height of 1900mm.



Bathroom

- The main light switch is outside the bathroom door to the right, at a height of 1270mm.
- The room is lit by recessed LED ceiling lights.
- Standard size bath with handgrips, the bath has a height of 580mm.
- The bath has a mixer twist taps and a handheld shower attachment.
- Walk in shower with anti-slip base, fixed and adjustable shower head.
- The shower has a minimum opening access of 630mm. There is a step up to the shower of 160mm.
- The controls are at a height of 1000mm-1200mm.
- WC with a seat height of 420mm with a lever flush.
- Vanity unit with inset basin, mixer tap with twist controls. Soft close cupboards and drawers below.
- The vanity unit has a height of 880mm.
- Mirror, light, and shower point over hand basin.



Ground floor bedroom

- The main light switch is to the right of the bedroom door at a height of 1380mm.
- One centre ceiling light.
- 6' double divan bed which can be twin upon request.
- Bed length is 1900mm, bed height is 700mm with a firm mattress.
- No clearance under bed.
- Bed in central position with good circulation space around bed.
- Wardrobe with one drawer. Clothes hanging rail at a height of 1800mm.
- Two bedside cabinets with lamps.
- Five-drawer chest of drawers.
- Wooden chair no arms. 470mm seat height.



Garden

- Secure, level, enclosed garden with table and four chairs.
- The garden table is 710mm high. The chairs have a seat height of 390mm and a back height of 440mm.
- Two folding upright deckchairs 440mm seat height
- Large wooden doors which open to car parking area.



Additional Information

- Assistance dogs are welcome at all our cottages
- In the event of a fire, it is the responsibility of the guests to evacuate themselves. Vibrating fire/smoke detectors are available if requested at time of booking. Please contact us if you have any other specific access requirements in this respect.
- Mobile phone signal is not reliable in the valley but good signal just up the hill towards Port Isaac.
- There is free Wi-Fi in the cottage.
- Carpets are 80/20 wool/manufactured fibres.
- Duvets and pillows are made of hollowfibre.
- Cushions are hollowfibre.

Facilities at all cottages

In addition to the standard equipment and facilities, each cottage is equipped with the following:

- Chair with armrests in sitting room.
- Good reading light
- Non-slip mat for bath/shower
- Information in alternative formats (on request)

We aim to provide these items in all cottages but please check when booking as to their availability and to check if new items have been added to the list.

In The White Cottage, please pre-request a large handle vegetable peeler and an easy jar opener.

Specialist equipment

Other specialist equipment such as wheelchairs, bath seats, toilet frames etc may be available for loan or purchase from the local Red Cross loan centre. Please check this out before booking the Cottage and contact us if you require further information.

<https://www.redcross.org.uk/get-help/borrow-a-wheelchair>

<https://www.redcross.org.uk/get-help/hire-a-toilet-aid>

Future Plans to improve Access to National Trust Holiday Cottages

- We are currently in the process of writing accessibility guides for all our holiday cottages and improving access over time for all our guests. All feedback is very helpful in informing us of ways in which we can improve access to all our cottages. We welcome any comments or ideas from you about access at this cottage and thank you for taking the time to do this. Please do this in the most convenient way for you. See contact details below or information on website.



About the Accessibility Guide

- This Accessibility guide is intended to provide key information about the cottage that may be particularly relevant to guests with disabilities. Please contact us prior to booking if you would like information that is more specific and we will be happy to oblige.

Email: holiday.enquiries@nationaltrust.org.uk

Phone: 0344 800 2070

Access for All at the National Trust

- The Access for All office works to improve access at all National Trust cottages and properties. The office welcomes comments and ideas on improving access.

Phone: 01793 818531

Email: accessforall@nationaltrust.org.uk

July 2023