

National Trust Cottages Accessibility Guide December 2023

**Manor House
Stackpole Centre**

**Old Home Farmyard
Stackpole
Pembrokeshire SA71
5DQ**

Ref: 013033



Introduction

- The Manor House sleeps six people.
- The house was originally the residence of the Stackpole Estate's Land Agent.
- Part of the Stackpole Centre complex of buildings.
- In the heart of the Stackpole Estate, just a stone's throw from the historic Bosherton Lily Ponds and within one mile of both Broad Haven South and Barafundle beaches.
- The entire centre complex is heated by a central 320KW biomass boiler with an LPG gas back up boiler. All radiators have thermostatic valves for easy adjustment of the heating by guests.
- Property has its own driveway.
- Parking is directly in front of the cottage; the ground is mostly level and gravelled.

The cottage is arranged as follows:

- Entrance lobby opens into the living room and the dining room. A separating door leads into a second lobby with access to the kitchen, the back door and a ground floor WC. A flight of stairs up to a landing off which the master bedroom (en-suite), two family bedrooms (each with two single beds) and the main bathroom are located.

Pre-Arrival

- See the main webpage for booking and location details.
- Please contact us prior to booking if you have any specific access requirements or queries.
- Directions will be provided with your booking and keys are located in a key safe by the front door.

Approach

- It is recommended that the travel instructions contained in your booking documents are followed carefully. We advise visitors not to follow SAT-NAV towards Stackpole village as this will lead to a carpark at Stackpole Court site with no through access to the centre.

Arrival & Parking Facilities

- The Cottage has its own private parking in front with space for multiple vehicles.
- There is no PIR lighting to the cottage.
- The exterior light switch for the cottage front door is located in the entrance lobby.

Getting in (and out) of the cottage

- Keys are located in a key safe by the front door
- There are two slightly uneven steps leading to the front door. They have a rise of at 130mm and 200mm and are 1190mm wide.
- The front door is 1100mm wide and 2000mm high.
- The back door can be accessed from the garden over a threshold of 130mm; inside there are two steps with a 160mm and 210mm rise respectively to the cottage ground floor level.
- Back door width of 900mm and a height of 1900mm.

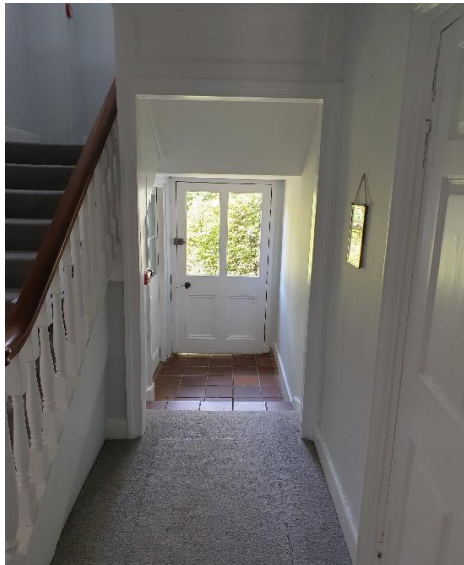
Getting around the cottage

- Door widths are generally wide, ranging from 740mm – 970mm.
- Light switches are located at a height of 1150mm.
- Illumination levels are generally fair. Artificial lights are of the LED type.
- Visual contrast is reasonable throughout.

- Floor coverings are carpet in all the living areas. The ground floor WC has a tiled floor as does the area inside the back door. The kitchen floor is wood laminate and bathroom floors are vinyl.
- The staircase is made up of ten treads of 160mm rise to a landing, followed by a further seven steps of 160mm rise to first floor level. The handrail is on the right-hand side and is between 790mm and 1180mm high from the step. The stairs are carpeted.
- Next to the back door is a door to the cellar.

Ground floor

Entrance lobby area



- The front door leads directly into the entrance lobby. There is a bench on the left with a seat height of 570mm and a coat rack on the right with hooks at intervals between 1100mm and 1800mm.
- There is also a mahogany dresser.
-

Living Room



- The doorway is 960mm wide x 2070mm high.
- The log burner sits on a slate hearth flush with the floor. There is a log basket, fireguard and companion set. The mantle is 1190mm above the hearth.
- There are two two-seater sofas and two armchairs, all have seat heights of 460mm.
- The TV table height is 840mm and the TV free stands on this.
- There is a coffee table with a height of 370mm.
- There is one table lamp as well as a standard lamp with LED bulbs fitted.
- The windows are to the front and side with sill heights of 570mm, both have window seats with cushions.

Dining Room



- The doorway is 980mm wide x 2030mm high.
- The log burner sits on a slate hearth flush with the floor. The mantle is 1220mm above the hearth. There is a large mirror above the mantle.
- The dining table seats six, and can be extended to seat up to ten people. The table is 775mm high and there are six chairs with a seat height of 480mm.
- There is a sideboard with a height of 820mm and a Welsh dresser with a table height of 820mm.
- The windows are to the front and side with a sill height of 480-680mm. Window to the front has a window seat cushion.

Ground floor WC

- Door height 1860mm and width 940mm.
- The wash hand basin has a rim height of 880mm.
- The WC seat height is 450mm.
- Light switch on pull cord to the right-hand side.

Kitchen



- Door height 1950mm and width 900mm.
- Kitchen table of 750mm with 655mm clear space underneath. Six dining chairs of 460mm height.
- The worktop height of 925mm. A kettle, toaster, fridge/freezer, microwave, and dish washer are provided.
- There is a Belfast sink of 210mm depth with a rim height of 870mm.
- Windows are to the rear and side with sill heights of 600-920mm.

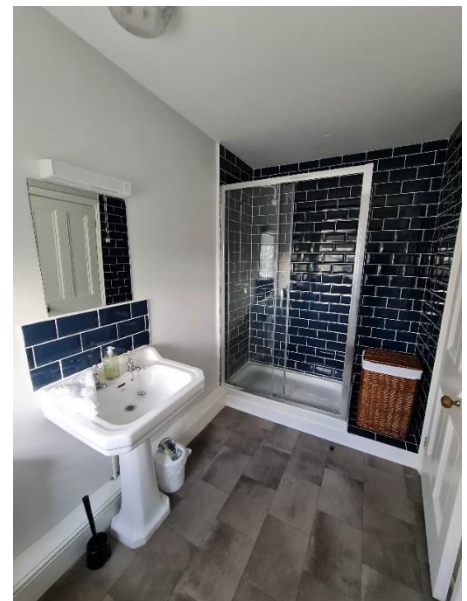
Stairs leading to first floor

- The staircase is made up of ten treads of 200mm rise to a landing, followed by a further seven steps of 170mm rise to first floor level. The handrail is on the right-hand side and is between 790mm and 930mm high from the step. The stairs are carpeted.



First Floor

Master bedroom (en-suite)



- Short corridor of 820mm width and three steps with a rise between 150-190mm.
- Bed mattress height 630mm.
- There is an additional pull cord light switch above bed.

- A chest of drawers (980mm high) with wall mounted mirror above. 1340mm from floor to bottom of mirror.
- There is a totem for hanging clothes (1550mm high).
- Window overlooks the garden (sill height of 730mm).
- There are two bedside tables (710mm) with LED reading lamps.
- The en-suite has a WC (seat height 440mm) and vanity sink unit (840mm high) and a shower cubicle with a step of 250mm.

Second floor family bedroom 1

- Door height 2050mm and width 970mm.
- Two single beds with mattress heights of 600mm.
- Beds can be made into super king on request- measuring 1800mm wide.
- One triple wardrobe (hanging rails at 1700mm) with two low level drawers.
- Two bedside tables (600mm high) with reading lamps (LED bulbs).
- Windows on two sides with sill heights of 920mm and 560mm.
- Chest of drawers 980mm high, with wall mounted mirror above. 1400mm from floor to bottom of mirror.
- Wicker chair with arms 450mm high.
- Large rug.
- Snuggle sofa, seat height 560mm.



Second floor family bedroom 2

- Door height 2060mm and width 1000mm.
- Two single beds with mattress heights of 600mm.
- Beds can be made into super king on request- measuring 1800mm wide.
- Chest of drawers 1180mm, with wall mounted mirror above.
- Two bedside tables (660mm) with two lamps (LED bulbs).
- Windows on two sides with sill heights of 900-920mm.
- Wicker chair 450mm high with arms.
- Upholstered chair 360mm high with arms.
- One triple wardrobe (hanging rails at 1700mm) with 2 low level drawers.
- Snuggle sofa, seat height 560mm.
- Large rug.



Bathroom

Main bathroom



- Free standing bathtub 600mm high.
- Shower tray has a step height of 230mm.
- The wash hand basin has a rim height of 830mm. Mirror above with shaving light (pull cord end at 1500mm).
- The WC seat height is 450mm.
- Bathmats are provided.

Garden



- The cottage has a private lawn to the side of the property. The garden is laid to lawn There is also an adjacent communal lawn area with a fire pit shared with the rest of the centre. The

garden is separated by a hedge and stone walls. Access to the garden can be made via both the front and the back door.

- The grass is regularly cut through the growing season and is generally even.
- There is one recycled plastic picnic bench with fixed seats to the front of the property. Table is 740mm high with 710mm clear space underneath and a seat height of 430mm.
- There is a wooden table and two benches on grass to side of the property. The table is 730mm high with 680mm clear space underneath. Benches are 410mm high.

Additional Information

- Assistance dogs are welcome at all our cottages.
- In the event of a fire, it is the guest's responsibility to evacuate the building. The cottage is fitted with a fire alarm system and has visual beacons for guests with hearing impairment.
- TV reception is good.
- Mobile phone / 4G coverage at the cottage is very poor, currently only the EE network has a reliable signal.
- Free Wi-Fi for guests is provided in the centre's foyer area.

Facilities at all cottages

The National Trust aims to expand the list of accessible /equipment/items available at each cottage and these may include

- Cordless kettle
- Hollowfibre bedding
- Chair with armrests
- Good reading light
- Large handle vegetable peeler
- Easy tin opener
- Non-slip mat for bath/shower
- Non-slip place mat
- Easy jar opener
- Information in alternative formats (on request)

Please note that we cannot guarantee that all items will be available at the time of your visit. Please enquire at the time of booking regarding any specific requests.

Specialist equipment

Other specialist equipment such as wheelchairs, bath seats, toilet frames etc may be available for loan or purchase from the local Red Cross loan centre. Please check this out before booking the Cottage and contact us if you require further information.

<https://www.redcross.org.uk/get-help/borrow-a-wheelchair>

<https://www.redcross.org.uk/get-help/hire-a-toilet-aid>

Future Plans to improve Access to National Trust Holiday Accommodation

We are currently in the process of writing accessibility guides for all our holiday cottages and bunkhouses and improving access over time for all our guests. All feedback is very helpful in informing us of ways in which we can improve access. We welcome any comments or ideas from you about access at this cottage and thank you for taking the time to do this. Please do this in the most convenient way for you. See contact details below or information on website.

About the Accessibility Guide

This Accessibility Guide is intended to provide key information about the accommodation that may be particularly relevant to guests with disabilities. Please contact us prior to booking if you would like information that is more specific, and we will be happy to oblige.

Email: cottages@nationaltrust.org.uk Phone: 0344 8002070

Access for All at the National Trust

- The Access for All office works to improve access at all National Trust accommodation and properties. The office welcomes comments and ideas on improving access.

Phone: 01793 818531

Email: accessforall@nationaltrust.org.uk

Date 21st December 2023