

National Trust Cottages Accessibility Guide

Hall Court
Cotehele
Cornwall



Property Ref: 011006

Introduction

The property sits within the Cotehele Estate, and is adjoined to other historical estate buildings that are open to visitors

Sleeps up to 2 people in 1 bedroom. The apartment is all on the first floor and has additional internal steps.

The property has night storage heating and convector heaters.

The Cottage is arranged as follows:

Ground floor

Entrance hall with stairs

First floor

Double bedroom, steps leading to bathroom with shower over bath, kitchen, sitting/dining room

Pre-Arrival

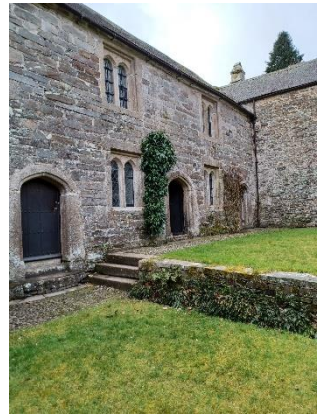
- See the main webpage for booking and location details.
- Please contact us prior to booking if you have any specific access requirements. □
Directions provided with booking

Approach

The property is approached by hedge and vegetation lined country lanes, sometimes narrow and with passing places.

Arrival & Parking Facilities

- Parking is 300 metres from the property in the main visitor car park. Access to the property can be arranged in order to unload
- Paths leading to the property are wide and generally level. They are initially of tarmac leading to gravel and then cobblestones. There is a ramp and 3 x stone steps, step heights 180mm and 200mm, tread 240mm, width 1500mm
- There is no outside lighting so if arriving after dark it is advisable to have a torch



Getting in (and out) of the cottage

- Arched front door, minimum height 1500mm, maximum central height 1740mm, width 900mm. Uneven worn stone threshold, height 140mm, width 300mm, step down to hallway 100mm.
- Key box with dial combination lock located to the left of the front door at a height of 1380mm



Getting around the cottage

Ground floor:

- Hall width 1500mm, length 2150mm, stone floor with large coir mat, 1 wall light

First floor:

- Stairs are half turn, uneven angular winders, step height 160mm, tread 300mm, width 700mm. Handrail to the right when ascending, wide central carpet runner
- Landing circulation 1400mm by 1300mm, wood floorboards, 1 x wall light
- 5 x stairs from the bedroom to the back landing, stair height 210mm, tread 220mm, width 860mm, reduced head height on the stairs of 1660mm. Handrail on the left when ascending. Stairs are wooden with a central wide carpet runner
- Back landing circulation 1300mm by 1100mm, wooden floorboards, no light



Double Bedroom

- Door width, 790mm, level threshold
- Floorboards with a large rug
- Double bed width 1460mm, length 1900mm, height 880mm, clearance underneath 390mm
- 2 x side tables, 2 x bedside lamps with cable on/off switches, ceiling chandelier
- 2 x windows with views over the courtyard and a croquet lawn
- Chair, seat height 500mm
- Hanging rail behind a curtain, chest of drawers
- Good circulation, sides of bed 900mm, end of bed 1100mm



Bathroom

- Door width 630mm, level threshold
- Linoleum floor
- Toilet height 420mm, flush button on the top right
- Bath height 520mm, twist taps with rubber washers, grab handles and rubber mat, handheld shower attachment
- Additional electric shower over the bath, controls height 1360mm, pivoted shower screen
- Sink height 840mm, twist taps with rubber washers
- Shaver socket height 1900mm integrated into light fixture on right hand side above sink
- Ceiling light, window with views over croquet lawn
- Circulation width around the bath 1200mm, by the toilet 670mm, and by the sink 800mm



Kitchen

- Door width 700mm, level threshold
- Wooden floorboards
- Height of worktop 930mm
- Fitted kitchen with electric double oven and ceramic hob, under counter combined fridge/freezer, slim dishwasher, microwave, washer/dryer
- Ceramic sink, mixer taps with rubber washers

- 3 x wall lights, under wall cupboard lighting, 2 x narrow windows overlooking stone walls
- Table, height 730mm space underneath 580mm
- 2 x wooden chairs with seat cushions, seat height 510mm
- Good circulation



Sitting room

- Arched door to sitting room minimum height 1630mm, maximum height 1790mm, width 700mm
- Continuation of wooden floor, large rug with anti-slip underlay
- Electric wood burner effect fire
- 1 x 2-seater settee with a seat height of 440mm
- 1 x armchair, seat height 420mm
- 3 x windows with views over inner and outer courtyards
- 2 x table lamps with on/off switches on the cables
- 2 x floor lamps, one wired to main switch, one with a floor switch
- 1 x table, height 690mm, clearance underneath 660mm
- 2 x wooden chairs with upholstered seat pads, seat height 440mm



Additional information

- Assistance dogs are welcome at all our cottages
- In the event of a fire, it is the responsibility of the guests to evacuate themselves. Vibrating fire/smoke detectors are available if requested at time of booking. Please contact us if you have any other specific access requirements in this respect.

Facilities at all cottages

The National Trust aims to expand the list of accessible equipment/items available at each cottage and these may include

- Cordless kettle
- Hollowfibre bedding
- Chair with armrests
- Good reading light
- Large handle vegetable peeler
- Easy tin opener
- Non-slip mat for bath/shower

- Non-slip place mat
- Easy jar opener
- Information in alternative formats (on request)

Please note that we cannot guarantee that all items will be available at the time of your visit. Please enquire at the time of booking regarding any particular requests.

Specialist equipment

Other specialist equipment such as wheelchairs, bath seats, toilet frames etc may be available for loan or purchase from the local Red Cross loan centre. Please check this out before booking the Cottage and contact us if you require further information.

<http://www.redcross.org.uk/standard.asp?id=89425>

Future Plans to improve Accessibility to National Trust Holiday Cottages

We are currently in the process of writing accessibility guides for all our holiday cottages and improving access over time for all our guests. All feedback is very helpful in informing us of ways in which we can improve access to all our cottages. We welcome any comments or ideas from you about access at this cottage and thank you for taking the time to do this. Please do this in the most convenient way for you. See contact details below or information on website.

About the Accessibility Guide

This Accessibility Guide is intended to provide key information about the cottage that may be particularly relevant to guests with disabilities. It is reviewed annually. Please contact us prior to booking if you would like more detailed information and we will be happy to oblige.

Phone: 0344 800 2070



Email: cottages@nationaltrust.org.uk

Access for All at the National Trust

We continue to work to improve accessibility at all our holiday cottages. We welcome comments and ideas on improving access.

Phone: 0344 800 2070

Email: cottages@nationaltrust.org.uk

Date 07 March 2023