

National Trust

National Trust Cottages Accessibility Guide

Elbow Cottage
Cotehele
Cornwall



Property Ref: 011004

Introduction

The property is on the edge of the Cotehele estate and located in an elevated position at a convergence of lanes next to woodland.

Sleeps up to 4 people in 2 bedrooms.

The property has night storage and electric convector heating and an open fire. There is no Wi-Fi at the property

The Cottage is arranged as follows:

Ground floor

Entrance hall, sitting room with open fire, dining room, kitchen, utility room with toilet

First floor

Two bedrooms (one double, one twin), bathroom with shower over bath

Pre-Arrival

- See the main webpage for booking and location details.
- Please contact us prior to booking if you have any specific access requirements.
- Directions provided with booking

Approach

The property is approached by hedge and vegetation lined country lanes, sometimes narrow and with passing places.



Arrival & Parking Facilities

- Parking is on higher level ground at the back of the property via a short, shared farm track
- Access to the property is then on foot down a steep fine gravelled path and 2 sets of steps. Path has a minimum width 700mm.
- Top block steps x 5, step height 160mm, tread 300mm, width 1720mm, handrail on left hand side on descent.
- Bottom uneven stone steps x 5, steps heights from 200mm to 240mm, tread 350mm, width 700mm. Handrail on right hand side on descent.
- It is possible to pull in by the front gate, width 1160mm to unload.
- There is outside lighting by the front door but if arriving after dark it is advisable to have a torch



Getting in (and out) of the cottage

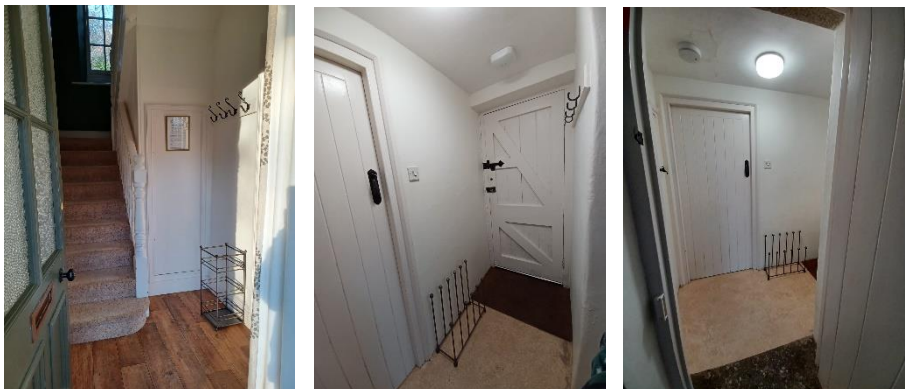
- Step up to covered porch, step height 260mm, width (pillar to wall) 1290mm, length 1300mm
- Half glazed front door, width 800mm, stone step height 110mm, wooden threshold on top width 100mm, height 60mm up and 60mm step down into hallway.
- Dial combination key box located to the right of the front door at a height of 1370mm
- Alternative access to the property via the back door from the back hall between the kitchen and utility, door width 720mm, step height 80mm, threshold height 50mm, width 120mm



Getting around the cottage

Ground floor:

- Front hall width 1500mm, length to the foot of the stairs 1370mm, linoleum floor with rubber backed coir mat, pendant light, coat hooks, height 1770mm
- Back hall width 900mm, length 2200mm, linoleum floor, coir matt, ceiling light, coat hooks, height 1810mm
- There is a stone threshold from the kitchen to the back hall with a slight step down of 40mm.



First floor:

- Half turn carpeted straight stairs, step height 180mm, tread 260mm width 740mm, banister to the right when ascending
- Half landing width 600mm, length 1520mm, window overlooking back garden
- Top landing, irregular shape with a minimum width of 780mm, length 2600mm, pendant light, carpet



Sitting room

- Door width 770mm, level threshold
- Linoleum floor with rug
- Open fire with fire guard
- 1 x 2-seater settee, seat height 450mm
- 2 x armchairs, seat height 460mm
- 2 x windows with views over front and side gardens and woodland
- Ceiling pendant light, 1 x floor lamp with floor on/off switch
- Good circulation between furniture



Dining room

- Door width 770mm, level threshold
- Linoleum floor
- Round table height 730mm, clearance underneath 620mm
- 4 x wooden dining chairs with upholstered seat pads, seat height 460mm
- Window with views over front garden, lane and woodland
- Pendant light, table lamp with under lampshade on/off switch
- Good circulation



Kitchen

- Door width 770mm, level threshold
- Linoleum floor
- Height of worktop 910mm
- Fitted kitchen with electric double oven and ceramic hob, freestanding fridge/freezer, slim dishwasher, microwave
- Sink, mixer, lever tap with ceramic washer
- 4 x spot track lighting and 3x spot track lighting
- Window with views of side garden path
- Good circulation, width between sink and oven area of 2450mm



Utility room/cloakroom

- Door width 770mm, level threshold, latch
- Sink, height 780mm, twist taps with rubber washers
- Separate washing machine and tumble dryer
- Worktop height 910mm
- Toilet height 420mm, lever flush on the right
- 2 x obscure windows over garden and side path, ceiling light with pull cord
- Minimum circulation width by the sink 680mm
- Width by the toilet of 1000mm



Double Bedroom

- Door width 790mm, level threshold
- Carpet
- Divan bed, width 1600mm, length 2000mm, height 680mm
- 2 x side tables, bedside lamps with under lampshade on/off switches, ceiling pendant light with additional light pull over the bed
- Window with views over the front lane and woodland beyond
- Wooden rocking chair, seat height 460mm
- Built in wardrobe, chest of drawers
- Circulation to the sides of the bed 550mm and 1000mm, end of bed 1400mm
- Sloping ceiling with exposed roof trusses but not restrictive



Twin Bedroom

- Door width 780mm, level threshold
- Carpet
- Twin divan beds, width 950mm, length 2000mm, height 680mm
- 2 x bedside lamp with under lampshade on/off switch
- Ceiling pendant light with additional light pull over bed
- 2 x windows with views over the garden and woodland
- Built in wardrobe, chest of drawers
- Wooden chair, seat height 450mm
- Good circulation



Bathroom

- Door width 740mm, level threshold
- Linoleum floor
- Toilet height 420mm with push flush on top
- Bath height 510mm, twist taps with rubber washers, grab handles
- Electric shower over bath with pivoted shower screen, controls height 1450mm
- Sink height 790mm, twist taps with rubber washers
- Shaver socket in light fixture above sink on left hand side, height 1920mm
- Ceiling light and pull light switch over mirror
- Circulation around the bath 1300mm by 1300mm
- Window with views over farmland



Garden

- Access to the garden is via the front or back door.
- Unenclosed mature garden with series of sloping lawns, apple trees, shrubs
- 4-piece aluminium outdoor furniture set



Additional information

- Assistance dogs are welcome at all our cottages
- In the event of a fire, it is the responsibility of the guests to evacuate themselves. Vibrating fire/smoke detectors are available if requested at time of booking. Please contact us if you have any other specific access requirements in this respect.

Facilities at all cottages

The National Trust aims to expand the list of accessible /equipment/items available at each cottage and these may include

- Cordless kettle
- Hollowfibre bedding
- Chair with armrests
- Good reading light
- Large handle vegetable peeler
- Easy tin opener
- Non-slip mat for bath/shower
- Non-slip place mat
- Easy jar opener
- Information in alternative formats (on request)

Please note that we cannot guarantee that all items will be available at the time of your visit. Please enquire at the time of booking regarding any particular requests.

Specialist equipment

Other specialist equipment such as wheelchairs, bath seats, toilet frames etc may be available for loan or purchase from the local Red Cross loan centre. Please check this out before booking the Cottage and contact us if you require further information.

<http://www.redcross.org.uk/standard.asp?id=89425>

Future Plans to improve Accessibility to National Trust Holiday Cottages

We are currently in the process of writing accessibility guide for all our holiday cottages and improving access over time for all our guests. All feedback is very helpful in informing us of ways in which we can improve access to all our cottages. We welcome any comments or ideas from you about access at this cottage and thank you for taking the time to do this. Please do this in the most convenient way for you. See contact details below or information on website.

About the Accessibility Guide

This Accessibility Guide is intended to provide key information about the cottage that may be particularly relevant to guests with disabilities. It is reviewed annually. Please contact us prior to booking if you would like more detailed information and we will be happy to oblige.

Phone: 0344 800 2070

Email: cottages@nationaltrust.org.uk

Access for All at the National Trust

We continue to work to improve accessibility at all our holiday cottages. We welcome comments and ideas on improving access.

Phone: 0844 800 2070

Email: cottages@nationaltrust.org.uk

Date 28 March 2023