

## National Trust Cottages Access Guide

Engine Cottage  
Calstock  
Cornwall



Property Ref: 011005

### Introduction

The property is located in a wooded valley opposite an unfenced small stream.

Sleeps up to 2 people in 1 bedroom and with a first-floor bathroom and open plan kitchen living area.

The property has convector heating and a wood burner. There is no Wi-fi at the property and mobile and TV signal is very limited as the property is located in a valley.

The Cottage is arranged as follows:

### Ground floor

Open-plan sitting room/kitchen/dining with solid-fuel stove.

### First floor

Double bedroom with 6' double bed, bathroom with shower over bath.

## Pre-Arrival

- See the main webpage for booking and location details.
- Please contact us prior to booking if you have any specific access requirements.
- Directions provided with booking.

## Approach

The property is approached initially via a single-track lane flanked by cottages and parked cars. The lane then becomes a level rough track for about a mile. The property is adjacent to Danescombe Cottage (another National Trust holiday cottage) and another property opposite which is set further back.

## Arrival & Parking Facilities

- Parking is behind the cottage
- There is outside lighting by the front door but if arriving after dark it is advisable to have a torch



## Getting in (and out) of the cottage

Stable front door, width 910mm, threshold height 70mm, width 90mm

There are 2 stone steps up to the front door, step heights 110mm and 180mm, treads of 390mm and 700mm

Key box with dial combination lock to the left of the door, height 1485mm



## Getting around the cottage

### Ground floor:

Front door opens into the open plan living area

### First floor:

Straight half turn carpeted stairs with three landing areas.

First landing area 760mm by 730mm, second adjacent landing area 780mm by 730mm, top landing area 900mm by 760mm. Step height 180mm, tread 230mm, width 740mm

Handrail to the left of first flight of stairs and central banister to the right when ascending Side window and pendant light



## Open plan living area

- Linoleum, rug with anti-slip underlay
- Wood burner
- 1 x 2-seater settee, seat height of 430mm
- 2 x high windows with a woodland outlook, 1 window with cushioned window seat , seat height 500mm and views over track and woodland
- Ceiling pendant light, 1 x floor lamp with floor on/off switch
- Drop leaf table, height 730mm, clearance underneath 600mm
- 2 x wooden dining chairs with upholstered seat pads, seat height 470mm

## Open plan kitchen

- Entrance to kitchen area 600mm
- Linoleum floor
- Height of worktop, 920mm
- Fitted kitchen with electric double oven and ceramic hob, under counter fridge/freezer, washer/dryer, microwave
- Sink, separate twist taps with ceramic washers
- Ceiling track spot lighting with 3 spotlights
- Circulation width between kitchen units 1250mm
- 1 x window with views over woodland





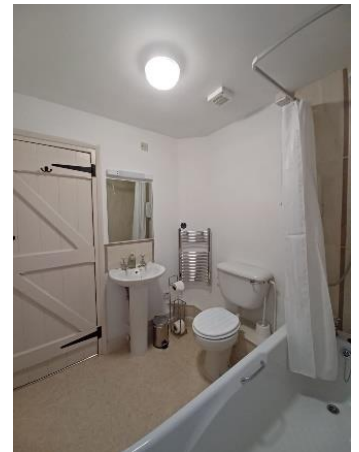
## Bedroom

- Door width, 620mm, level threshold, Suffolk latch
- Carpet
- On double bed, width of 1500mm, length 1900mm, height 700mm
- 2 x side tables, bedside lamps with cable on/off switches
- Ceiling pendant light
- 2 x windows with views over track and woodland
- Chair, seat height 470mm
- Built in wardrobe
- Good circulation at the end of the bed of 1600mm



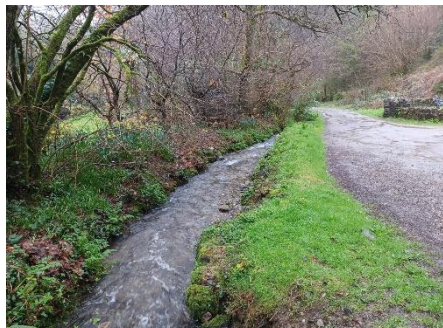
## Bathroom

- Door width 620mm, level threshold, Suffolk latch
- Linoleum floor
- Toilet, sink and bath with electric shower
- Toilet height is 420mm, lever flush handle to the right
- Bath height 560mm, grab handles, twist taps with rubber washers
- Shower curtain
- Sink height 840mm, twist taps with rubber washers
- Shaver socket on left hand side of light above sink, height 1830mm
- Ceiling light with a short light pull at height of 1650mm
- Circulation between sink and the bath 700mm
- Window overlooking woodland



## Garden

There is no garden at the property but there is outside space. There is a stream opposite the cottage which can be fast flowing and deep in places.



## Additional information

- Assistance dogs are welcome at all our cottages
- In the event of a fire, it is the responsibility of the guests to evacuate themselves. Vibrating fire/smoke detectors are available if requested at time of booking. Please contact us if you have any other specific access requirements in this respect.

## Facilities at all cottages

The National Trust aims to expand the list of accessible /equipment/items available at each cottage and these may include

- Cordless kettle
- Hollowfibre bedding
- Chair with armrests
- Good reading light
- Large handle vegetable peeler
- Easy tin opener
- Non-slip mat for bath/shower
- Non-slip place mat
- Easy jar opener
- Information in alternative formats (on request)

Please note that we cannot guarantee that all items will be available at the time of your visit. Please enquire at the time of booking regarding any particular requests.

## **Specialist equipment**

Other specialist equipment such as wheelchairs, bath seats, toilet frames etc may be available for loan or purchase from the local Red Cross loan centre. Please check this out before booking the Cottage and contact us if you require further information.

<http://www.redcross.org.uk/standard.asp?id=89425>

## **Future Plans to improve Access to NT Holiday Cottages**

We are currently in the process of writing access guides for all our holiday cottages and improving access over time for all our guests. All feedback is very helpful in informing us of ways in which we can improve access to all our cottages. We welcome any comments or ideas from you about access at this cottage and thank you for taking the time to do this. Please do this in the most convenient way for you. See contact details below or information on website.

## **About the Access Guide**

This Access guide is intended to provide key information about the cottage that may be particularly relevant to guests with disabilities. It is reviewed annually. Please contact us prior to booking if you would like more detailed information and we will be happy to oblige.

Phone: 0844 800 2070

Email: [cottages@nationaltrust.org.uk](mailto:cottages@nationaltrust.org.uk)

## **Access for All at the National Trust**

We continue to work to improve accessibility at all our holiday cottages. We welcome comments and ideas on improving access.

Phone: 0844 800 2070

Email: [cottages@nationaltrust.org.uk](mailto:cottages@nationaltrust.org.uk)

Date 29 March 2023