

Heathlands 1
 Corfe Castle
 Dorset
 BH20 5DU

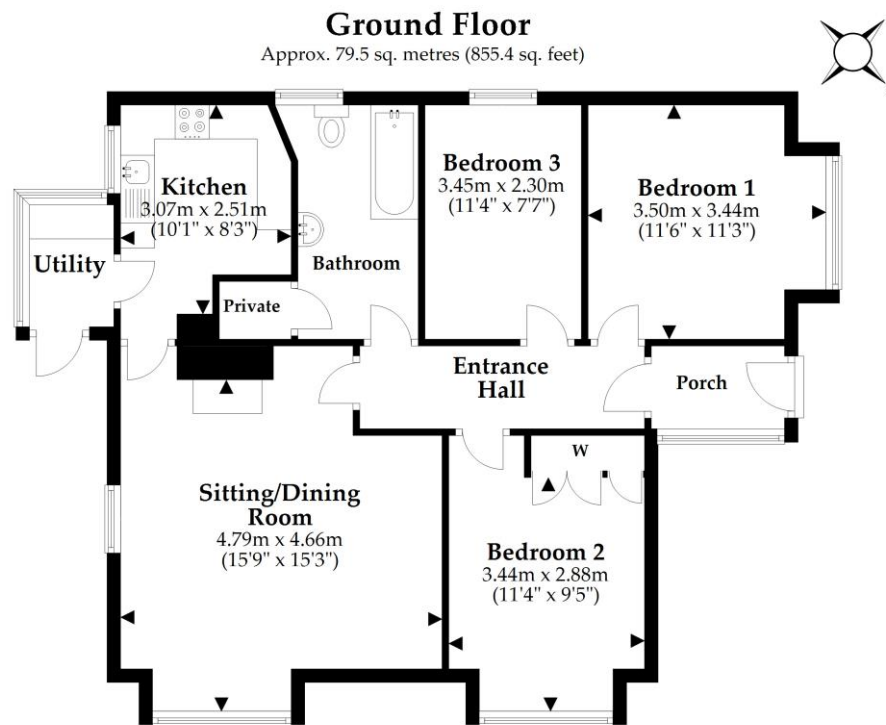
Ref: 003002
 Sleeps 6 + cot: One double, two twin



Introduction

- Heathlands is a former isolation hospital and is one of the last remaining corrugated iron buildings in Dorset
- Located on a narrow lane and should be approached with care
- There are two cottages at this location, Heathlands 1 is clearly signposted
- Accommodation is on one level
- The pavilion can accommodate six guests plus a cot
- There is a lounge, a double bedroom, two twin bedrooms, kitchen, and a bathroom
- The garden is surrounded by open water in the nearby heathland

Floorplan



Total area: approx. 79.5 sq. metres (855.4 sq. feet)

This plan is not to scale and it is for general guidance only. LJT Surveying Ringwood

Pre-Arrival

- See the main webpage for booking and location details
- Please contact us prior to booking if you have any specific access requirements
- Directions provided with booking

Approach, arrival and parking facilities

- The approach to the pavilion is along a narrow lane
- The drive is on a slope, it can accommodate two cars parked behind each other and close to the cottage entrance. Additional parking is available at the entrance to property on a grass area
- There is a gravel path which is uneven
- There is a step, at a height of 19cm, up to the front door
- The front door is the main point of entry and opens into the main hall. The key is in the “key safe” on the wall by the front door at a height of 152cm
- Front door opening width of 84cm and height of 210cm, door lock at a height of 144cm

Getting around the cottage

- Once inside the cottage is one level
- The front door opens into the porch area with a further door into the hall. From the hall there are doors into three bedrooms, the bathroom and the lounge/dining room. From the lounge/dining room there is door into the kitchen from which the rear porch/utility area is accessed and where there is a back door.



Entrance porch

- The front door opens into the porch, the width is 119cm
- Mat flooring
- Light above inner door
- Six coat hooks on right wall
- Doorway into hall has a width of 75cm and a 2m height

Hall

- When you enter the hall there are three doors on the right, one straight ahead and one on the left.
- The first doorway on the right into the twin bedroom has a width of 74cm, height of 198cm
- The second doorway on the right into the second twin bedroom has a width of 72cm, height of 198cm
- The third doorway on the right into the bathroom has a width of 74cm, height of 198cm
- Straight ahead is the doorway on the lounge/dining room and has a width of 78cm, height of 201cm
- The door on the left into the double bedroom has a width of 77cm, height of 201cm
- Vinyl flooring throughout
- Two recessed ceiling spotlights
- Hallway clearance width of 114cm

Twin Bedroom (first on right)

- Two single beds at a width of 3'92cm x 6'4"/195cm in length x 24"/62cm
- Clearance under beds of 25cm
- Distance between beds 77cm
- Two bedside lamps, two recessed ceiling spotlights and three single wall lights
- Bedside cabinet and chest of drawers
- Window with views of the garden
- Radiator on internal wall to adjoining hall
- Vinyl floor and mat



Twin Bedroom (second on right)

- Two single beds at a width of 2'6"/75cm x 6'2"/190cm in length
- Clearance under beds of 4cm
- Distance between beds 56cm
- Two bedside lamps, two recessed ceiling spotlights and two double wall light
- Chest of drawers
- Window with side view of the garden and fields
- Radiator on internal wall to adjoining hall
- Vinyl floor and mat

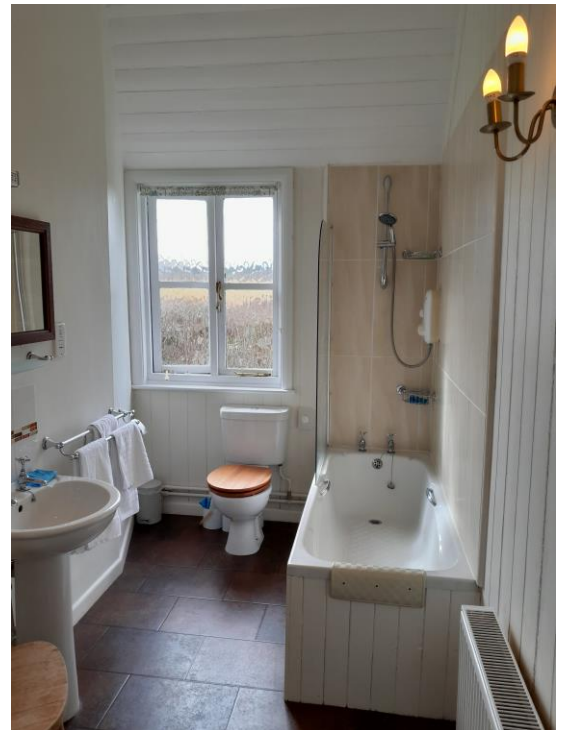
Double bedroom (first on left)

- Double bed 6'/180cm wide x 6'4"/195cm length x 25"/63cm high. Clearance under the bed(s) is 30cm
- There are two single wall light and two bedside lamps
- There is a built-in wardrobe, two bedside cabinets and a chest of drawers
- Windows with views over the garden, driveway and fields
- Radiator located on adjoining wall to lounge
- Vinyl floor



Bathroom

- The doorway is 73cm wide and 198cm high
- Vinyl flooring
- There is one window with mottled glass
- The toilet height is 43cm, the sink height is 80cm
- There is a shower attachment over the bath, the side of the bath is 55cm high
- Two recessed ceiling lights, a vanity light above the mirror and a double wall light
- Radiator on bedroom wall
- Pillar style taps
- Chair with a seat height of 47cm
- Towel rail at a height of between 86cm to 92cm



Lounge and dining room

- Vinyl flooring throughout and a mat
- Sofas with a seat height of 45cm and 42cm, two armchairs with a seat height of 43cm
- Footstool at a height of 36cm
- Four recessed ceiling spotlights, three wall lights and a standard lamp
- Three windows looking out over the garden and driveway
- There are radiators located on the internal bedroom wall and exterior wall
- There is a TV
- Fireplace with hearth at a height of 4.5cm and a mantel place at a height of 146cm
- Dining table height is 76cm, knee clearance 61cm, six chairs with a seat height of 46cm



Kitchen

- Doorway width is 67cm height is 190cm
- Vinyl flooring throughout
- Five recessed spotlights
- Height of worktop is 92cm
- Radiator on interior wall
- Window looking out over the garden
- Lever style mixer tap
- Doorway into rear porch width is 70cm, height is 197cm



Rear porch and utility room

- Vinyl flooring throughout
- Sloping ceiling, at lowest point 170cm high
- One light to left of kitchen doorway
- Windows along two sides looking out over the garden
- Work counter along right side, height of 92cm, length 121cm, depth 62cm
- Washing machine located under work counter
- Doorway into garden width is 74cm, height is 167cm
- Coat hook rack over worktop at a height of 160cm

Garden

- The garden is accessed from the rear porch/utility room and the front entrance
- The garden is mostly lawn and is uneven
- Table with height of 68cm, knee clearance of 62cm, and three fixed bench seats at a height of 42cm



Additional Information

- Dogs are allowed at this cottage
- In the event of a fire, it is the responsibility of the guest to evacuate themselves. Vibrating fire/smoke detectors are available at the time of booking. Please contact us if you have any specific requirements in this respect.

Facilities at all cottages

The National Trust aims to expand the list of accessible /equipment/items available at each cottage and these may include

- Cordless kettle
- Chair with armrests
- Reading light
- Large handle vegetable peeler
- Easy tin opener
- Non-slip mat for bath/shower

- Information in alternative formats (on request)

Please note that we cannot guarantee that all items will be available at the time of your visit. Please enquire at the time of booking regarding any specific requests.

Specialist equipment

Specialist equipment such as wheelchairs, may be available for loan or purchase from the local Red Cross loan centre. Please check the link below and contact us if you require further information.

[Hire or borrow a wheelchair | British Red Cross](#)

Plan to improve access

- We are currently in the process of writing accessibility guides for all our holiday cottages with the aim to improve access over time for all our guests. All feedback is very helpful and we welcome any comments or ideas from you about access at this cottage. Please do this in the most convenient way for you, see contact details below or information on website. Thank you for assisting us with our improvements.

About the Accessibility Guide

- This Accessibility Guide is intended to provide key information about the accommodation that may be particularly relevant to guests with disabilities. Please contact us prior to booking if you would like information that is more specific to your needs. We will be happy to help.

Email: cottages@nationaltrust.org.uk

Phone: 0344 8002070

Access for all

- The National Trust Access for All office works to improve access at our accommodation and properties. The office welcomes comments and ideas on improving access.

Phone: 01793 818531

Email: accessforall@nationaltrust.org.uk

July 2023