

National Trust Cottages Access Statement

**The Tower
Blickling
Norfolk
East Anglia**

Cottage ref: 010042



Cottage details

Bedrooms: 2

Sleeps: 4

Min stay: 3

Let starts: Thursday

Dogs allowed: No

Acorn rating: 4

Introduction

Experience life in this 'mini castle' complete with a Rapunzel tower and rooftop terrace offering panoramic views across rolling fields and woodlands, stretching to the coast. Set on the impressive Blickling Estate it was previously used as the second Earl of Buckinghamshire's race stand. It is now converted to offer luxurious holiday accommodation with beautiful, modern and comfortable interiors. It really is something special - you won't want to leave!

The grand, Jacobean, Blickling Hall with its extensive network of hiking and cycling trails and traditional pub, the Buckinghamshire Arms, is just fifteen minutes' walk away. During the fishing season there is excellent, free, coarse fishing available on nearby Blickling lake.

The excellent beaches of the Norfolk coast and popular coastal towns of Cromer and Sheringham are a 20-minute drive. We have several properties to visit within easy reach of Blickling, many offering activities and events throughout the year.

The Tower is a terracotta brick building, over 3 floors, 4 including the viewing roof terrace.

The Cottage is arranged as follows:

Ground floor

Kitchen, bathroom with shower over bath, steps up to sitting/dining room with multi-fuel stove. Spiral staircase leading to bedrooms.

First floor

One twin bedroom (can also be a 6' double on request).

Second floor

One double (5' half tester bed) with en-suite shower room

Third floor

roof terrace with outdoor seating.

Pre-Arrival

- See the main webpage for booking and location details.
- Please contact us prior to booking if you have any specific access requirements.
 - Directions provided with booking

We do not consider this cottage suitable for children under the age of 6 due to the twin bedroom being on a different floor to the master bedroom and access to both being via the spiral stairwell. No stair-gates are provided due to the design of this building.

Approach

The cottage's track is just off from windy road named Blickling road. The track is single car width and is bumpy. There are double wooden gates to shut off the drive.

Half way down the track there is a crossroads with a very popular path.



Arrival & Parking Facilities

Available for two cars.
There is a fenced garden area.



Getting in (and out) of the cottage

The approach to the cottage is on a gravel track, A opening within the fence marks the entrance of the cottage facility. The path towards the cottage is also gravel.





Key safe is at 1500mm high from ground level situated on building parallel to the tower.

Getting around the cottage

Approaching the Tower there is an upwards gradient. Upon entering the front door there is a large step up, entering into the entrance hall which leads straight ahead to the downstairs bathroom or to the right leading into the kitchen. The kitchen leads to both the utility and the lounge/diner which consists of three steps up. Through the lounge/diner the stairs are behind a large fire door. Just off the first 13 stairs is the first floor, with the 2nd bedroom (twin or double). Further up the stairs (26 up from lounge) is the Double bedroom which hosts an en-suite shower room. Continuing up the stairs (40 from lounge level) leads to the door for the outside terrace.

All doors in The tower are fire doors therefore generally heavier and self-closing.

Entrance Hall



To get into the cottage there is a step up off 100mm by depth of 170mm with a step down of 60mm

Exterior door is 940mm wide handle is 960mm from bottom of floor outside.
Straight ahead is the main Bathroom, to the right is the kitchen leading to the rest of the house.

Kitchen/dining area

Door from entrance hall into kitchen is 750mm wide

Tiled floor

Height of worktop is 930mm

Depth of worktop 620mm

Butler basin

The kitchen and utility room have fitted units with a freestanding kettle, microwave, cooker, toaster and electric hob, fridge freezer, washing machine, tumble dryer.

Light switch at 1160mm high from floor

Wooden table and chairs in centre of room table height of 750 mm. chairs seat height at 440mm

Minimum clearance is 900mm

There are three steps which lead to the door for the lounge, these steps are between 220mm & 200mm high by 240mm & 100mm depth (photographed below).

Door leading to utility is 750mm wide (photographed below).





Utility



height of worktop is 930mm
depth of worktop is 600mm
minimum clearance is 800 mm
light switch is 1160mm from ground floor

Ground floor Bathroom



WC, basin and bath with shower attachment

The WC is 430 mm high

The basin is 830mm high

The internal measurements of bath are 550mm wide to 740mm wide (smallest to largest point), 1400mm long 400mm high. Tap is in centre of bath, with shower control at 1400mm high from bottom of internal bath.

Pull cord Light at 1330mm high

Minimum clearance 700mm

Door is 660mm wide







To get into the lounge/dining area there are 3 steps of between 220mm&200mm high by 240mm&100mm depth. The 100mm depth is followed by a step down of 20mm onto a wooden floor.

The minimum clearance in the lounge is 650mm

Door is 850mm wide.

There are two wing armchairs with seat height 420mm along with a two seater sofa at height 510mm

The floor is wooden with a large rug in the centre.

Wood burning fire

Two floor standing lamps, one table lamp and four wall lights.

Coffee table with height 480mm

Wooden table seats 6 people table is at height 730mm. Chairs are wooden with cloth seat at height 440mm

Cabinet in room width 960mm

Television in cupboard

Views onto the national trust Blickling estate

Dresser and bookcase

Telephone/Other Rooms

Landline on dresser at height of 940mm in sitting room

Stair door clearance in lounge with 950mm wide.

All steps within main tower staircase have steep curving gradient. Heights of steps varies between 150mm and 180mm. Single rope handrail on left hand side as inclining, rope is between 900mm-920mm high from each step.

Twin Bedroom

After 13 steps the Twin bedroom is to the left of the spiral staircase (which continues) with a 40mm step up by 70mm flat by 60mm step down





Door is 730mm wide

Light switch is 120mm from ground level

two lamps in bedroom on either side of bed, with three wall lights.

Twin divan beds, dimensions are 650mm(H) 1940mm(L) and 950mm(W) for single. When beds are as double dimensions are 650mm(H) x 1940mm(L) x 1900mm(W).

No clearance under the beds

Two small bedside cabinets, one with height 860mm, other with height 820mm.

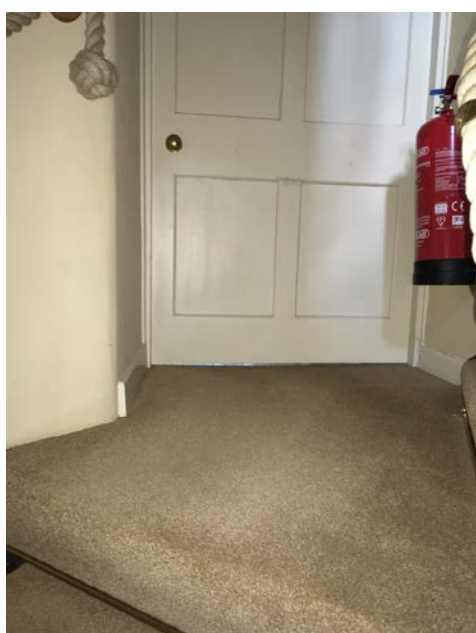
Minimum clearance 400mm

Chest of drawers with 800mm height and 470mm depth

Chair with seat height of 400mm

Wardrobe with single door width of wardrobe is 1070mm

Double Bedroom



After 26 steps from lounge and 13 from twin bedroom with varying heights is the double bedroom.

Door entrance 960mm

Double bed dimensions are 700mm(H) x2000mm(L) x1500mm(W).

Clearance space under bed is 400mm

Minimum circulation space is 1300mm

Wardrobe 1190mm wide, below doors on wardrobe is chest of drawers.

Chair with height of 420mm.

Freestanding mirror

Small bedside cabinets with table lamp each side, both with height of 700mm

Wooden floor with 3 large rugs.

En-suit



Door into en-suit is 680mm wide

Step up of 20mm

Bathroom door is 680mm wide opening in towards the bathroom

Bathroom comprises lavatory basin, and shower.

The WC is 430mm high

The basin is 810mm high

The shower door is 620mm wide, a step up of 250mm into shower, step down of 120mm with shower taps at 1570mm high from internal shower.

Minimum circulation area of 800mm

1150 mm high light cord

Tower's Viewing Balcony





After 13 steps to twin bedroom (from lounge), by a further 13 to double bedroom 13 to a break followed by 14 steps to the balcony.

Door is 740mm wide

Door is curved at the top

Step up of 20mm by 100mm flat by 60mm step up by 120mm flat for door ledge.

Wooden floor

Wall surrounding the balcony is minimum height of 900mm

Rail surrounding the balcony at height 1060mm

Picnic Table and chairs with height 500mm chairs table 820mm

Garden

There is a fenced garden area

Additional Information

The main staircase in this cottage is a spiral staircase.

Farm vehicles sometimes use the drive for access to surrounding farmland.

There is a footpath passing the boundary of the property.

Assistance dogs are welcome at all our cottages

In the event of a fire, it is the responsibility of the guests to evacuate themselves. Vibrating fire/smoke detectors are available if requested at time of booking. Please contact us if you have any other specific access requirements in this respect.

Facilities at all cottages

The National Trust aims to expand the list of accessible /equipment/items available at each cottage and these may include

- Cordless kettle
- Hollowfibre bedding
- Chair with armrests
- Good reading light
- Large handle vegetable peeler
 - Easy tin opener
- Non-slip mat for bath/shower
 - Non-slip place mat

- Easy jar opener
- Information in alternative formats (on request)

Please note that we cannot guarantee that all items will be available at the time of your visit.
Please enquire at the time of booking regarding any particular requests.

Specialist equipment

Other specialist equipment such as wheelchairs, bath seats, toilet frames etc may be available for loan or purchase from the local Red Cross loan centre. Please check this out before booking the Cottage and contact us if you require further information.

<http://www.redcross.org.uk/standard.asp?id=89425>

Future Plans to improve Access to NT Holiday Cottages

We are currently in the process of writing access statements for all our holiday cottages and improving access over time for all our guests. All feedback is very helpful in informing us of ways in which we can improve access to all our cottages. We welcome any comments or ideas from you about access at this cottage and thank you for taking the time to do this. Please do this in the most convenient way for you. See contact details below or information on website.

About the Access Statement

This Access Statement is intended to provide key information about the cottage that may be particularly relevant to guests with disabilities. It is reviewed annually. Please contact us prior to booking if you would like more detailed information and we will be happy to oblige.

Phone: 0844 800 2070

Email: cottages@nationaltrust.org.uk

Access for All at the National Trust

We continue to work to improve accessibility at all our holiday cottages. We welcome comments and ideas on improving access.

Phone: 0844 800 2070

Email: cottages@nationaltrust.org.uk

Date 07/01/19