

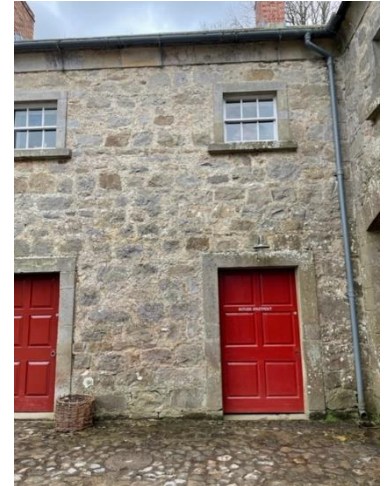
## National Trust Cottages Accessibility Guide (April 2023)

Butler's Apartment  
Florence Court  
Enniskillen

Ref: 019018

### Introduction

- Situated in the south yard in the south wing, Butler's Apartment served as living quarters for the male servants at Florence Court.
- This unique and atmospheric apartment is located on the first floor and overlooks the 18th-century laundry courtyard and the adjoining woodland garden.



The cottage is arranged as follows:

### First Floor:

- Kitchen / dining, sitting / dining, bathroom with roll top bath and separate shower cubicle, twin bedroom and steps going up to double bedroom.

### Pre-Arrival

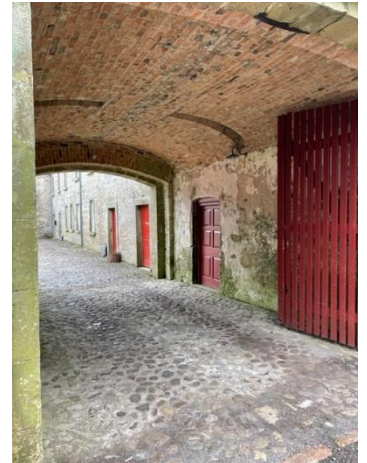
- See the main webpage for booking and location details.
- Please contact us prior to booking if you have any specific access requirements.
- Directions provided with booking.
- Please bring a torch if arriving after dark.

## Approach

- Single track tarmac and gravel road through the Estate.
- The immediate entrance to the cottage is under an archway.

## Arrival & Parking Facilities

- Parking in cobbled courtyard close to cottage door.
- The keys to your cottage will be in a key safe. The safe is on the back of the right-hand gate as you enter the courtyard (South Yard). The key safe is 1300mm high from the ground. Includes a key for the cottage and the bin store.



## Getting in (and out) of the cottage

- Access to the cottage is through a level access 1160mm wide door leading into a porch way with level flagstone flooring.
- Access to the cottage is up eighteen wooden steps with a handrail to left hand side. Stairs are 185mm high with 275mm depth and are 890mm at the narrowest point.
- One overhead light.
- Smoke detector/fire alarm.

## Getting around the cottage

### First Floor

- Wooden staircase, width 890mm to first floor with handrail to left hand side ascending.



- Floor surfaces are a mixture of flagstone, brick and wood.
- Main corridor is 1280mm wide at the narrowest point with a mild slope in hallway, towards kitchen and sitting room. Brick flooring, slightly uneven. kg carbon dioxide extinguisher.
- Antique coat stand at top of stairs.
- Two floor rugs with non-slip.
- One overhead light in landing.
- Smoke detector/fire alarm in landing.

### Hallway leading to bedrooms



Wooden floor.

- Lock laundry cupboard/hot press-caretaker use only.
- Smoke detector/fire alarm.
- One overhead light.
- Thermostat on wall to left of hot press

## Kitchen



- Room measure 4420mm x 3150mm to cupboards.
- Door access is 850mm wide with 20mm wooden threshold- 30mm slight step due to slope in brick floor.
- The kitchen has fitted units with range style cooker, washing machine, fridge freezer and microwave. Kitchen worktop is 950mm high.
- Belfast sink with twist taps.
- Wooden dining table with four chairs, 800mm high with clear knee space 663mm high. Wooden chairs 450mm high with backrests and cushioned seats
- Views to woodland.
- Two overhead lights.
- Heating panel on side of cupboard, to the right of sink.
- Fire blanket located beside heating panel.
- One highchair 560mm seat height.
- Small blocked off fireplace.
- Three wall shelves- lowest height 910mm.

## Sitting Room

- 920mm wide door – handle 1460mm high.
- Views to 18<sup>th</sup> Century laundry courtyard.
- Room has 2-seater leather sofa 450mm high.
- 2-winged back chairs and 1 wooden cushioned seat with backrest. Seat height ranges from 400-480mm high.
- Woodburning stove.
- Dining area with round wooden dining table 750mm high with 730mm clear knee space underneath.
- Four wooden chairs with backrest and cushioned seats, dining chair height 460mm.
- One antique chest of drawer with marble top.
- One chest of drawer/bookcase tall unit.
- Two small wooden tables.
- Two floor lamps.
- One table lamp.
- Smoke detector/fire alarm.
- Carbon Monoxide detector.
- Display unit with TV and DVD player.
- Brick flooring with large carpet mat.



## Double Bedroom

- Low window (safety chain attached) with views to laundry courtyard.



- 
- Door 1070mm wide handle 1640mm high.
- Four steps up to bedroom 175mm high with 240mm depth – handrail to left.
- Divan bed 750mm high x 2000mm long x 1550mm wide. 55mm space under bed and metal frame headboard.
- 2000mm x 2500mm clear space at foot of bed.



- Small bedside locker with table lamps each side.
- Chaise Longue 315mm high, 1370mm long.
- Desk 740mm high with 590mm clear knee space. Wooden base on wheels with marble top. Two cushioned wooden chairs with backrest 450mm high.
- Large double wardrobe.
- Two floor lamps.
- Two smoke detectors/fire alarms.
- Wooden floor and large carpet mat.

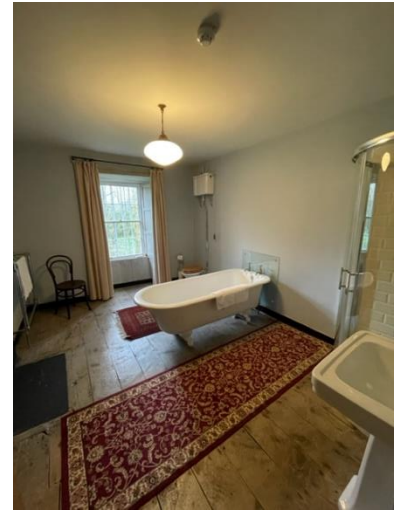
## Twin Bedroom

- Views to woodland.
- Door 890mm wide.
- Two divan beds 620mm high x 1890 long x 900mm wide. 50mm space under bed and metal frame headboards.
- Small beside cabinet with lamp each side of beds.
- Freestanding wardrobe, chest of drawers, Two wooden cushioned chairs 450mm high with backrest.
- Circulation space of 2100mm beside first bed.
- Free standing mirror.
- Small antique table.
- One floor lamp.
- Blocked fireplace.
- Smoke detector/fire alarm.
- Wooden floor with large carpet mat.



## Bathroom

- Room is 3050 x 4060mm with level wooden flooring and two mats.
- Door is 890mm wide.
- Bathroom comprises WC, basin, separate electric corner shower and roll top bath.
- WC is 410mm high with pull chain flush 1010mm high.
- Basin is 820mm high.
- Roll top bath is 600mm high x 615mm wide x 1680mm long.
- Corner shower unit 950mm x 105mm with step 150mm high into shower. Sliding double doors-entrance space 500mm wide.
- Shower controls 1200mm high.
- One overhead light.
- One heated towel rail.
- Blocked fireplace.
- Light above mirror-switches and shaving sockets 1900mm high from floor.
- One wooden chair with backrest 470mm high.
- Smoke detector/fire alarm.



## Bin Store

- Level access 1160mm wide door.
- Cement flooring.
- Light switch to right upon entrance.



## Garden

- No designated garden area for cottage but guests have use of the Estate grounds after hours.

## Additional Information

### Facilities at all Cottages

The National Trust aims to expand the list of accessible /equipment/items available at each cottage and these may include.

- Cordless kettle
- Hollowfibre bedding
- Chair with armrests
- Good reading light
- Large handle vegetable peeler
- Easy tin opener
- Non-slip mat for bath/shower
- Non-slip place mat
- Easy jar opener
- Information in alternative formats (on request)

Please note that we cannot guarantee that all items will be available at the time of your visit. Please enquire at the time of booking regarding any particular requests.

### Specialist equipment

Other specialist equipment such as wheelchairs, bath seats, toilet frames etc may be available for loan or purchase from the local Red Cross loan centre. Please check this out before booking the cottage and contact us if you require further information.

<http://www.redcross.org.uk/standard.asp?id=89425>

### Future Plans to improve Access to National Trust Holiday Accommodation

- We are currently in the process of writing accessibility guides for all our holiday cottages and bunkhouses and improving access over time for all our guests. All feedback is very helpful in informing us of ways in which we can improve access. We welcome any comments or ideas from you about access at this cottage and thank you for taking the time to do this. Please do this in the most convenient way for you. See contact details below or information on website.

### About the Accessibility Guide

- This Accessibility Guide is intended to provide key information about the accommodation that may be particularly relevant to guests with disabilities. Please contact us prior to booking if you would like information that is more specific and we will be happy to oblige. Email: [cottages@nationaltrust.org.uk](mailto:cottages@nationaltrust.org.uk) Phone: 0344 8002070



## **Access for All at the National Trust**

- The Access for All office works to improve access at all National Trust accommodation and properties. The office welcomes comments and ideas on improving access.

Phone: 01793 818531

Email: [accessforall@nationaltrust.org.uk](mailto:accessforall@nationaltrust.org.uk)

Date April 2023