

National Trust Cottages Accessibility Guide October 2022

Cadgwith Elm
Inglewidden
Cadgwith
Helston

TR12 7LA

Ref: 011040



Introduction

Part of the former Inglewidden Farm complex, Cadgwith Elm is a traditional, stone-built, detached farm building converted into a single-storey holiday cottage. The Southwest Coast Path runs past the cottage's garden. Just 50 metres along the path (behind the trees in the picture) is the viewpoint for a well-known local landmark. Far below at the bottom of the cliff lies *The Devil's Frying Pan*, a former sea cave where the roof has partially collapsed leaving a natural bridge across the cove.

There are four other National Trust holiday cottages and one NT tenanted cottage at this site.

The cottage layout is as follows:

Ground Floor: Hall, Sitting/dining room, Kitchen, Bathroom, Twin and Double Bedrooms

Pre-Arrival

- See the main webpage for booking and location details.
- Please contact us prior to booking if you have any specific access requirements.
- Directions provided with booking

Arrival & Parking Facilities

Cadgwith Elm can be found off the main road to Cadgwith down a single lane country road. There are many twists and turns but also quite a few passing places.



As you enter local residential area of Grade, follow the road as far as the farm/residential buildings, turn off right onto the lane signposted for *Polgwidden, The Devil's Frying Pan and Inglewidden*. A grey National Trust sign indicates you are trust land. Cadgwith Elm is the detached building which forms part of the Inglewidden complex. There is communal parking for the cluster of cottages located in this area.

Getting in and out of the cottage

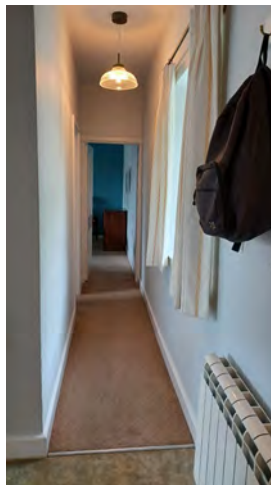
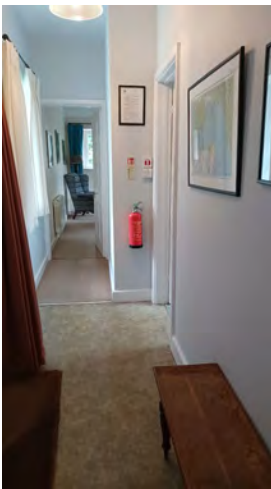


The front door is approximately 17 metres from the parking area. The picket gate to the garden is 920 mm wide and opens on to a level slate path. The front door is located to the left with an exterior light cited above. The key safe is at shoulder height on the left. Although there is an exterior light above the door, we recommend you bring a torch to set to set the correct combination to unlock the key safe. The front door has a small 50mm high threshold and opens inwards into the hall.

Getting around the cottage

Entrance hallway

- This cottage is on one level. The front door opens into a narrow hallway running along the front of the cottage with two windows overlooking the garden.
- There are five solid wooden doors off the hall – to the sitting/dining room, kitchen, bathroom and the two bedrooms. All opening inwards into each room.
- The small-paned sash windows are 900mm from the floor.
- The central section of the hallway floor is covered in vinyl but at each end on the approach to the sitting room and bedrooms, the floor is carpeted.
- There is a ceiling light on a three-way switch.
- There is a wall mounted coat rack with 4 hooks.
- There is a low wooden bench/table (1200mm wide x 300mm deep x 480mm high)
- There is a wall mounted Rointe electric heater.



Left: Hall looking to sitting / dining room Right: Hall looking to double bedroom

Sitting/Dining Room (dual aspect)

- 720mm wide doorway from hall
- This room has fitted carpet throughout.
- There is a central pendant light controlled from a switch by the door plus two standard lamps.
- There is a wall mounted Rointe electric heater.
- There is a woodburning stove inset into the slate hearth which is edged with wood.
- Around the fire is a wooden mantelpiece incorporating shelving.
- The wooden dining table measures 800mm x 1600mm.
- There are 4 wooden dining chairs with padded seats. (Seat height 450mm, back height 506mm)

National Trust

- A free-standing bookcase in one corner on the sea-facing wall next to the large window.
- A 32" TV on a small table, with a separate DVD player on a shelf beneath.
- There is a wide, small-paned sash window on the sea facing wall. The window sill is 900mm from the floor.
- There are two narrower but similar windows on either side of the fireplace. These look out towards the car parking area.
- Two-seater sofa (1450mm wide, 420mm seat height, 580mm back). with two scatter cushions.
- Two wing-back armchairs on either side of the sofa. (The measurements are: 490mm wide, 700mm back height, 490 seat height; and 500mm wide, 660 back height, 450mm seat height respectively.)
- A small circular side table is between the sofa and one armchair. (650mm high, 380mm diameter)
- A small glass side table with three shelves is in the corner next to the other armchair. (520mm high). On the bottom shelf is the Wi-fi router



Kitchen – single aspect

- 720mm wide doorway from the hall
- Tile-effect vinyl flooring
- Eight recessed down lights
- Seaward facing, small-paned sash window with Roman blind.
- Built-in window seat with fitted cushion (500mm high, 1380mm wide, 400mm deep)
- A range of built-in floor and wall cupboards. The wall cupboards are 410mm above the worktop.
- The worktop is white Formica type material with a shiny finish and a slight glitter effect. (900mm high)
- Microwave, 4-slice toaster, and electric kettle
- Washer-dryer and small dishwasher – both slotted in under worktop
- Electric oven incorporating a grill. The door opens towards you and down
- Ceramic hob above oven with glass splash back and extractor fan
- Free standing fridge-freezer
- Floor cupboard next to the oven incorporates a slide out waste bin
- Stainless steel sink and drainer with mixer tap operated by simple lever mechanism
- Built-in broom cupboard
- Rointe wall mounted electric heater

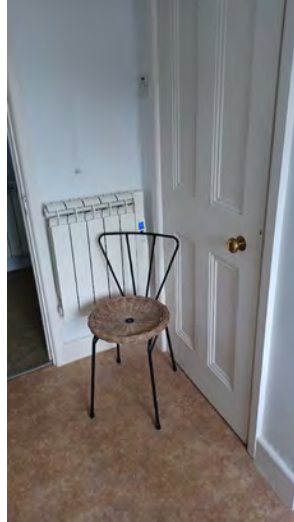


Bathroom – single aspect

- 710mm wide doorway from the hall
- Vinyl flooring
- Ceiling light. Light above mirror. Separate shaver socket
- Small-paned sash window with deep sill
- Rointe wall mounted electric heater
- Bath with two built-in handgrips and twist taps (680mm wide x 1660mm long x 580mm high)
- Electric shower over bath. Safety glass, hinged shower screen
- Wall around bath and shower is fully tiled
- Low lying WC (400mm seat height).
- Safety grab rail next to WC (height 700mm to 1080mm)
- Wash hand basin with twist taps (760mm high)

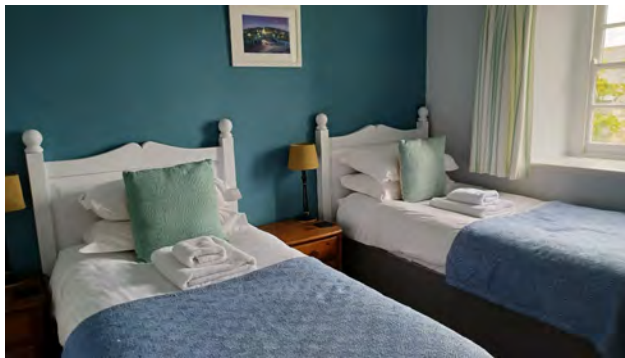
National Trust

- Small chair (470mm high)
- Shelving unit on wall to left of basin (Height of shelves varies from 1200mm to 1580mm high)
- Built-in airing cupboard



Twin bedroom – single aspect

- 680mm wide doorway from hall
- Fitted carpet
- Ceiling light and two bedside lamps
- Rointe wall mounted electric heater
- Small-paned sash window
- Built-in double wardrobe with shelf and hanging rail (1200mm wide)
- Four drawer wooden chest (800mm wide x 410mm deep x 540mm high)
- Two three-drawer bedside cabinets (460mm wide x 420mm deep x 540mm high)
- Two divan beds with wooden headboards (1000mm wide x 2000mm long x 600mm high)
- Small wall mirror
- Three bookshelves built into small alcove (Shelf heights from 990mm to 160mm)



Double bedroom – single aspect

- 700mm wide doorway from hall
- Fitted carpet
- Ceiling light and two bedside lamps
- Rointe wall mounted electric heater
- Small-paned sash window
- *Wooden carver type chair with cushioned seat (380mm seat height)
- Built-in wardrobe (1400mm)
- Three drawer wooden chest (980mm wide x 500mm deep x 880mm high)
- Dressing table/bureau (910mm wide x 530mm deep x 760mm high)
- Two bedside cabinets with drawer and shelf (370mm wide x 370mm deep x 640 high)
- Double bed (2000mm wide x 2000mm long x 600mm high)



Garden

- The garden is on two levels. The main lawn is directly to the front of the cottage. It is enclosed by a low Cornish hedge and a picket gate
- There is a picnic table (Bench seats 360mm high, table height 700mm)
- The secondary area is accessed via 11 irregular stone steps. There is no handrail, but the top area of the garden has a low wooden rail along it which you can hold on to as you go up these steps. The height of this rail from the steps varies from 1350mm to 70mm.
- The top area of garden houses a rotary clothes drier
- It is bordered by trees and shrubs with a wooden fence running along the back of the grassed area. Out of sight but not far beyond the trees is the edge of the cliff looking down on *The Devil's Frying Pan*



L-R

Main garden area

Steps to upper garden

Upper garden with rotary drier



Outside cottage garden, stone steps lead to footpath to the Devil's Frying Pan

Additional Information

Facilities at all cottages

The National Trust aims to expand the list of accessible /equipment/items available at each cottage and these may include

- Cordless kettle
- Hollowfibre bedding
- Chair with armrests
- Good reading light
- Large handle vegetable peeler
- Easy tin opener
- Non-slip mat for bath/shower
- Non-slip place mat
- Easy jar opener



- Information in alternative formats (on request)

Please note that we cannot guarantee that all items will be available at the time of your visit. Please enquire at the time of booking regarding any particular requests.

Specialist equipment

Other specialist equipment such as wheelchairs, bath seats, toilet frames etc may be available for loan or purchase from the local Red Cross loan centre. Please check this out before booking the Cottage and contact us if you require further information.

<https://www.redcross.org.uk/get-help/borrow-a-wheelchair>

<https://www.redcross.org.uk/get-help/hire-a-toilet-aid>

Future Plans to improve Access to National Trust Holiday Accommodation

- We are currently in the process of writing accessibility guides for all our holiday cottages and bunkhouses and improving access over time for all our guests. All feedback is very helpful in informing us of ways in which we can improve access. We welcome any comments or ideas from you about access at this cottage and thank you for taking the time to do this. Please do this in the most convenient way for you. See contact details below or information on website.

About the Accessibility Guide

- This Accessibility Guide is intended to provide key information about the accommodation that may be particularly relevant to guests with disabilities. Please contact us prior to booking if you would like information that is more specific and we will be happy to oblige.

Email: holiday.enquiries@nationaltrust.org.uk

Phone: 0344 8002070

Access for All at the National Trust

- The Access for All office works to improve access at all National Trust accommodation and properties. The office welcomes comments and ideas on improving access.

Phone: 01793 818531

Email: accessforall@nationaltrust.org.uk

February 2024