

National Trust Cottages Accessibility Guide



Carpenter's Cottage

Ickworth, Bury St Edmunds, Suffolk IP29 5QE

Cottage ref. 010050

Introduction

- Carpenter's Cottage is a two-storey semi-detached Victorian brick and slate cottage
- Sleeps four in two bedrooms
- One upstairs bathroom with bath and separate shower cubicle
- Open fire in sitting room
- Gardens to south and west of the cottage, partly shaded by woodland

** Please note that all door widths given indicate the clearance required for access*

The cottage is arranged as follows:

Ground Floor:

- Small lobby with bench and coat-rack leading to kitchen-diner
- Inner hall leading to sitting room and staircase to

First Floor:

- Wide staircase with 180 degree turn
- Twin bedded room and king size room
- Bathroom with bath & separate shower cubicle

Pre-Arrival

- See the main webpage for booking and location details
- Please contact us prior to booking if you have any specific access requirements
- Directions provided with booking
- Please bring a torch if arriving in the dark as there are no streetlights here

Approach

- A road leading to a track (both with some potholes) leads through the estate to the cottage
- The cottage sits by a green around which are dotted a few other tenanted cottages and the rangers' office and workshop
- There is a pond nearby – unfenced with steep sides

Arrival & Parking Facilities

- There is a gravel parking area beside the next-door cottage
- From the parking area, there is 6m walk across gravel to a hand gate 1.18m wide
- The gate opens onto a path past the front garden of the next-door cottage and a small allotment opposite to a further gate (860mm) opening into the front garden of Carpenter's Cottage
- The path is made of paving slabs set in the grass, approx. 25m long and may be slippery when wet
- The illuminated key-safe is to the right of the front door set at 1.3m height



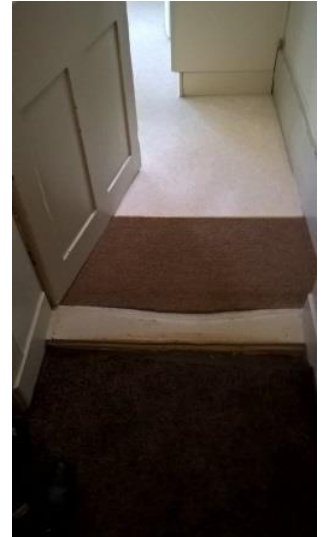
Entrance gate



Path to front door



Front door to lobby



Lobby to kitchen

Getting in (and out) of the cottage

- The front door is 920mm wide and opens onto a small lobby
- The door (860mm wide) from the lobby to the kitchen-diner is at right angles to the front door and has a 45mm high wooden threshold

Getting around the cottage

Kitchen-diner:

- Lino in kitchen; carpet in diner
- Fitted units at ground and eye-level
- Dishwasher, washing machine, fridge, electric hob, oven, microwave, toaster, kettle & CD player / radio
- Gas boiler at eye-level
- Worktop height is 910mm
- Taps with small levers
- Wooden dining table is 700mm high with clear knee-space of 590mm
- Four wooden dining chairs with cushioned seats; seat height 450mm, back 650mm high from seat
- Highchair
- Kitchen window overlooks front garden (west facing); dining window looks south over main garden
- Ceiling light above counter and above dining table



Kitchen area



Kitchen- diner



Threshold from hall to Sitting room



Sitting room with door to garden

Hall:

- Doors from diner and to sitting room both 900mm wide
- Hall at slightly lower level than diner separated by a wooden threshold
- One step with wooden threshold 120mm high up to sitting room
- Carpeted

Sitting room:

- Pair of two-seater sofas with seat height of 450mm
- Telephone, television on a wall bracket and DVD player on cupboard shelf
- Open fire
- Frosted window facing north; door opening south onto main garden
- Central ceiling light, standard lamp & table lamp
- Carpeted

Stairs

- Ten steps to the half-landing, which has a window looking south over the main garden
- 180 degree turn and nine further steps to the top landing
- First step is 100mm high, all the others are 180mm high
- Carpeted
- Handrail on inner side

Landing

- Carpeted
- Internet router is located here on top of a chest of drawers -serves both Keepers and Carpenters cottages



Twin Bedroom

- Two single divan beds 620mm high; 50mm space under beds
- One bedside chest of drawers with table lamp
- Two ceiling lights
- Wooden chair with cushioned seat and back, 450mm seat height
- Two walk-in cupboards
- North-facing window is frosted; south-facing window overlooks the main garden
- Carpeted plus rug
- Door 900mm wide

King Size Bedroom

- King size divan bed 650mm high; 35mm space underneath
- Two bedside cupboards, each with a table lamp
- Off-centre ceiling light
- Cushioned armchair 350mm seat height
- Wooden towel rail
- Wardrobe
- Mirror-topped chest of drawers 720mm high to surface
- Carpeted
- Door 760mm wide
- West-facing window overlooks the front garden and allotment, with paddocks and a green further off



Bathroom

- South-facing window overlooking the main garden
- Shower cubicle: 275mm step up into the cubicle; 450mm door width; 660mm sq. internally
- Bath: 540mm high; 470mm internal width between grab-rails; 1300mm internal length
- Basin height: 800mm
- Lever taps
- Toilet seat height: 420mm
- Central light flush to ceiling; spotlight in shower cubicle; shaving light above window
- Door 720mm wide
- Non-slip rubber bath and shower mat



Front garden path leading to allotment /woodland



Patio/seating area in main/rear garden

Garden

- Small front and good-sized main/rear garden laid to lawn, private and almost entirely enclosed by walls, hedges & fences
- Rectangular metal table height 760mm; 680mm knee space
- 4 x metal chairs, seat height 460mm
- 90mm step down from sitting room door; further 150mm step down to lawn
- Rotary washing line

Additional Information

- Assistance dogs are welcome at all our cottages
- In the event of a fire, it is the responsibility of the guests to evacuate themselves.
- Vibrating fire/smoke detectors are available if requested at time of booking.
- Please contact us if you have any other specific access requirements in this respect.

Facilities at all cottages

The National Trust aims to expand the list of accessible /equipment/items available at each cottage and these may include:

- Cordless kettle
- Hollow fibre bedding
- Chair with armrests
- Good reading light
- Large handle vegetable peeler
- Easy tin opener
- Non-slip mat for bath/shower
- Non-slip place mat
- Easy jar opener
- Information in alternative formats (on request)

Please note that we cannot guarantee that all items will be available at the time of your visit. Please enquire at the time of booking regarding any particular requests.

Specialist equipment

Other specialist equipment such as wheelchairs, bath seats, toilet frames etc may be available for loan or purchase from the local Red Cross loan centre. Please check this out before booking the cottage and contact us if you require further information.

[Hire or borrow a wheelchair | British Red Cross](#)

Future Plans to improve Access to NT Holiday Cottages

We are currently in the process of writing access guides for all our holiday cottages and improving access over time for all our guests. All feedback is very helpful in informing us of ways in which we can improve access to all our cottages. We welcome any comments or ideas from you about access at this cottage and thank you for taking the time to do this. Please do this in the most convenient way for you. See contact details below or information on website.

About the Access Guide

This Access Guide is intended to provide key information about the cottage that may be particularly relevant to guests with disabilities. It is reviewed annually. Please contact us prior to booking if you would like more detailed information and we will be happy to oblige.

Phone: 0844 800 2070

Email: cottages@nationaltrust.org.uk

Access for All at the National Trust

We continue to work to improve accessibility at all our holiday cottages. We welcome comments and ideas on improving access.

Phone: 0844 800 2070

Email: cottages@nationaltrust.org.uk

October 2022