

National Trust

National Trust Cottages Access Guide

Chaplain's Lodge
Tyntesfield
Wraxall
Bristol
BS48 1NX



Property Ref 003030

Introduction

Chaplain's Lodge is situated on the Tyntesfield Estate and adjoined to another holiday cottage, Chaplain's House. It is accessed via the main visitor entrance drive to the estate and is on a level tarmacked lane.

There is gas central heating and a heated towel rail in the bathroom.

Chaplain's Lodge is primarily arranged over 2 floors and sleeps up to 5 people. The main staircase is a half turned stairwell with radiating winder steps. There is a split level bathroom off the living room. The majority of the doors within the property are heavier fire doors with self-closing mechanisms.

The property comprises of the following:-

- Ground Floor – Lobby, Kitchen/Dinner, Living Room, Double Bedroom, Bathroom
- First Floor – Twin Bedroom, Double Bedroom
- Lower Ground Floor – Utility Room and access to the garden
- Garden- there is a large, sloping garden that adjoins the estate gardens and there is parking for two cars (with additional parking available in the visitors car park)

Pre-Arrival

- See the main webpage for booking and location details.
- Please contact us prior to booking if you have any specific access requirements.
- Directions provided with booking

Approach

- The house is approached from the main visitor entrance driveway. It is signposted off the main drive to the left. The lane is a level, single carriageway road and generally only used by estate vehicles. Cars are not permitted beyond the house.



Arrival & Parking Facilities

- The house is situated on the right of the lane and is the first (and only) pair of cottages before the bend. Chaplain's Lodge is the first of the two properties.
- Compact gravelled parking area for two cars next to the lane in front of the property.
- Front door faces the parking area and is approached via level ground.
- Key box with a press combination lock is on the left by the front door. There is outside lighting but you may need a torch if arriving after dark.

Getting in (and out) of the cottage

- Arch topped front door width is 930mm and has a max central height of 1850mm
- Stone step up with a height of 230mm into a flagstone lobby area
- Coat hooks in the lobby fixed at a height of 650mm
- Inner lobby has good circulation with an area of 1520mm by 2350mm
- No natural light in the lobby and a pendant light.
- Arch topped inner front door is at right angles and 650mm from the front door on the right. It is 900mm in width with a max central height of 1780mm

Getting around the cottage

Ground floor

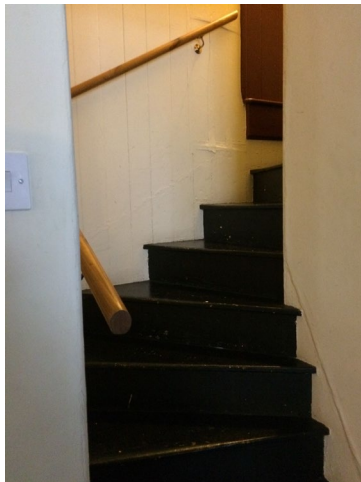
- Flooring comprises of relatively even dark wood floorboards and rugs with anti-slip underlay
- No thresholds between rooms (apart from in the bathroom)
- Doors are heavier fire doors with self-closures
- Bathroom is down two steps and off the living room and has a restrictive door opening of 580mm and a linoleum floor.
- Back hall to bedroom has no natural light and access to the stone stairwell to the lower floor.

First floor

- Half-turn wooden stairwell to the first floor with radiating winder steps. Single outer handrail.
- Stairs have variable central tread widths of between 230 – 250mm, tread length of 880mm and a height of 200mm
- Restrictive sloping ceiling height on the landing and in the bedrooms.
- Continuous, even, dark wooden flooring throughout
- Rugs with anti-slip underlay

Lower ground floor

- Straight stone stairwell with quarter turn winder steps at the bottom from the back hall to the lower floor with single handrail and curved step at the bottom
- Stairs have 240mm tread with a height of 200mm, winder step at the bottom has a central tread of 280mm
- Stairwell has no natural light
- Width of doorway at the bottom of stairs is 710mm



Ground Floor

Kitchen/Diner

- Consistent dark and relatively even wooden floorboards throughout
- Height of worktop is 930mm
- Kitchen area comprises of electric oven and ceramic hob. There is no dishwasher
- Sink with lever handled mixer tap
- View over parking area and side garden from dining end. View over lane from kitchen end
- Dining area has a separate fridge and freezer and a dresser.
- Wooden table with a height of 720mm and leg clearance of 580mm.
- There are five wooden chairs with a seat height of 450mm



Single Bedroom

- Door width 820mm with no thresholds
- Wooden flooring and rugs with anti-slip underlay
- Single bed length 1940mm, width 930mm, height under bed of 340mm
- Wooden chair with seat height of 430mm
- Bedside table with lamp. Lamp with on/off switch under the lampshade. Pendant Light
- Circulation around the bed 620mm at the end of the bed and 980mm to the side of the bed
- Chest of drawers and mirrored wardrobe
- Dual aspect views over landscaped gardens and side garden.
- The room is accessed via the back hall from the kitchen. Off the back hall is the stone staircase down to the lower ground floor located 410mm to the right.



Living Room

- Door width from kitchen 830mm
- Wooden flooring and rugs with anti-slip underlay
- 2 x floor lamps with under the lampshade on/off switches and pendant light
- 2 x winged back chairs with a seat height of 450mm
- 1 x armchair with a seat height of 500mm
- 1 x 2 seater sofa with a seat height of 470mm



Bathroom

- Door from living room to bathroom 660mm width but with restrictive opening to 580mm
- Two steps down into the bathroom with a tread of 240mm and a height of 150mm
- Linoleum flooring
- Sink with twist taps at a height of 690mm
- Toilet with a seat height of 420mm and lever handle
- Bath with mains shower over and glass screen with twist mixer taps
- Width between bath and wall 670mm
- Skylight window



First Floor

Twin Bedroom

- Doorway into bedroom with restrictive sloping ceiling height. Width 810mm Max height 1850mm, Min height 1340mm.
- Continuous wooden flooring and rugs with anti-slip underlay. No thresholds.
- 2 x single beds 1980mm length by 890mm width by 510mm height. Height under beds 220mm
- Good circulation with 1000mm to the side of each bed and 1550mm at the ends
- 2 x Bedside tables with lamps. On/off push switch under lampshade. Pendant light.

- Wooden chair with a seat height of 420mm
- Views of the side garden
- Chest of drawers, fitted cupboard



Double Bedroom

- Doorway into bedroom with restrictive sloping ceiling height. Width 810mm Max height 1850mm, Min height 1340mm.
- Continuous wooden flooring and rugs with anti-slip underlay. No thresholds
- Bed length of 2000mm, width of 500mm and a height of 660mm. Height under bed 370mm
- 2 x Bedside tables with lamps. On/off push switch under lampshade. Pendant light
- Upholstered chair with a seat height of 370mm
- Views over the lane
- Chest of drawers, fitted cupboard and wardrobe



Lower Ground Floor

Utility

- Flagstone flooring
- Washer/dryer, ironing board, sink, highchair
- Arched topped doorway to the garden with a width of 900mm and max height of 1900mm
- No threshold in doorway to garden leading onto a compacted gravel pathway and lawns

Garden

- The garden can be accessed via the utility room or from a side gate with a width of 1180mm from the gravelled parking area and via a sloping compacted gravel pathway.
- Garden landscaped with topiary and lawns with levelled areas, sloping lawns and steps.
- Garden furniture comprises of a wooden hexagonal table with clearance height of 700mm with fixed seating at a height of 460mm



Additional Information

- Assistance dogs are welcome at all our cottages
- In the event of a fire, it is the responsibility of the guests to evacuate themselves. Vibrating fire/smoke detectors are available if requested at time of booking. Please contact us if you have any other specific access requirements in this respect.

Facilities at all cottages

The National Trust aims to expand the list of accessible /equipment/items available at each cottage and these may include

- Cordless kettle
- Hollowfibre bedding
- Chair with armrests
- Good reading light
- Large handle vegetable peeler
- Easy tin opener
- Non-slip mat for bath/shower
- Non-slip place mat
- Easy jar opener
- Information in alternative formats (on request)

Please note that we cannot guarantee that all items will be available at the time of your visit. Please enquire at the time of booking regarding any particular requests.

Specialist equipment

Other specialist equipment such as wheelchairs, bath seats, toilet frames etc may be available for loan or purchase from the local Red Cross loan centre. Please check this out before booking the Cottage and contact us if you require further information.

<http://www.redcross.org.uk/standard.asp?id=89425>



Future Plans to improve Access to NT Holiday Cottages

We are currently in the process of writing access guides for all our holiday cottages and improving access over time for all our guests. All feedback is very helpful in informing us of ways in which we can improve access to all our cottages. We welcome any comments or ideas from you about access at this cottage and thank you for taking the time to do this. Please do this in the most convenient way for you. See contact details below or information on website.

About the Access Guide

This Access Guide is intended to provide key information about the cottage that may be particularly relevant to guests with disabilities. It is reviewed annually. Please contact us prior to booking if you would like more detailed information and we will be happy to oblige.

Phone: 0344 800 2070

Email: cottages@nationaltrust.org.uk

Access for All at the National Trust

We continue to work to improve accessibility at all our holiday cottages. We welcome comments and ideas on improving access.

Phone: 0344 800 2070

Email: cottages@nationaltrust.org.uk

Date 08 April 2018