

National Trust Accessibility Guide

Chatham

Bosloe,
Mawnan Smith,
Falmouth,
Cornwall
TR11 5JR

Ref: 011053



Introduction

- Chatham is a two-storey apartment occupying the West Wing of Bosloe House.
- The main rooms have views down over lawns and meadows to the Helford River.
- The apartment sleeps eight and is arranged as follows:

Ground Floor

Hall, large sitting room/dining room with multi-fuel stove, kitchen, cloakroom with WC, twin bedroom (can be double on request), ensuite wet room and WC.

First floor

One double room with ensuite bathroom, two twins (can be doubles on request), bathroom with WC and shower over bath. Designated private garden area with barbecue.

Pre-Arrival

- See the main webpage for booking and location details.
- Please contact us prior to booking if you require further access information or if you require some furniture to be removed.
- Directions provided with booking
- Bring a torch if arriving in the dark, as there are no streetlights on site and a torch is useful to see the keysafe combination lock numbers.

Approach

Bosloe House is located at the bottom of a gated drive. The area immediately surrounding the house is level. Where the drive splits in two, Chatham is located to the right.



Arrival & Parking Facilities

- There is a level parking area immediately outside the house and the entrance door to Chatham. The forecourt illuminates in the dark via a sensor-activated external light.
- The keysafe is located on the side of the log store which is off to the left at the bottom of the drive and round the corner from Stable Flat.



Shared parking area for Chatham and Bosveal



Stable flat with keysafe on logstore shown

Getting in (and out) of the apartment

Front door

- Low lip (25mm) from level parking area onto level granite slabs outside front door.
- Chamfered low wooden threshold (30mm) into house
- Door lock is at 118cm from floor level
- Clear door width is 107cm
- Door opens into spacious entrance hall



Side door

- Leads to level path to garden from ground floor bedroom
- Clear door width is 920mm
- Level access



Getting around the apartment

- 19 stairs to first floor with banister rail to right hand side and child gates at top and bottom
- Large landing at top of stairs with one step up to bedroom corridor
- Door widths on ground floor are 700mm (to the cloakroom) and 840mm (to all other rooms). The double doors from the hall to the sitting room have a clear opening width of 1050mm with both doors open.
- The floors are carpeted in the bedrooms, corridors and hallway, with wooden flooring with loose rugs in the sitting/dining room and high-quality vinyl flooring in the bathrooms and kitchen.
- Level access throughout the ground floor. One 130mm step on landing on 1st floor but otherwise level access

Ground Floor

Entrance Hall

- Coat stand
- One wooden chair (seat height 42cm)
- Sideboard
- Stairs to first floor with stairgate fitted after first step
- Storage area under stairs
- Door to ground floor WC (opening width 70cm)
- Double doors (opening width 111cm) leading to sitting/dining room with access beyond to kitchen, bedroom and ensuite bathroom
- Hard-wired fire alarm fitted to ceiling

Ground floor WC

- Clear open width of door is 70cm
- Room is 142cm wide x 178cm long
- WC seat height is 41cm from the floor
- Hand basin is 77cm from the floor
- Wall mounted mirror with lights on either side
- Heated towel rail fitted to wall



Sitting Room / Dining Room



- Double doors from entrance hall with 111cm clear open width
- Large room with windows overlooking the side garden and coastal views
- Wooden table (290cm L x 110cm W x 77cm H). Knee clearance 67cm
- Ten upholstered chairs (seat height 45cm)
- Two large sofas: First with high arm rest has cushion width of 164cm with seat height of 44cm and depth of 60cm. Second sofa with low arm rest has cushion width of 160cm with seat height of 46cm and seat depth of 60cm
- Two matching armchairs with seat height of 43cm and depth of 60cm
- Large coffee table 143cm x 107cm
- Multi-fuel stove with fire guard provided
- 50-inch TV and DVD player on large wooden chest
- Four ceiling-hung lights each with four bulb-fittings

National Trust

- Two standard lamps, and one reading light
- Sideboard with bookcase
- Window seat, seat depth 34cm, seat height 47cm
- Wooden floor with large carpet in sitting area
- Small desk (77cm H) with wooden chair (42cm seat height)
- Small circular side table (72cm high)
- Sounder for assistance alarm fitted opposite entrance to kitchen

Kitchen



- Entry door is 85cm wide
- Height of worktops is 91cm
- Section of lower worktop at 70cm with 66cm knee clearance underneath
- Everhot 90i with two ovens (roasting and slow cooking), cast iron hot and simmer plates and induction hob with two zones. The top of the cooker is 90cm from the floor.
- Microwave, large fridge/freezer, four slice toaster and two cordless kettles.
- Portable CD/Radio
- Sink with lever taps
- Dishwasher & washing / drying machine
- Four dropped ceiling lights
- Strip lights under the wall units
- Cooker hood light
- Tiled floor
- Width of kitchen is 125cm at narrowest point

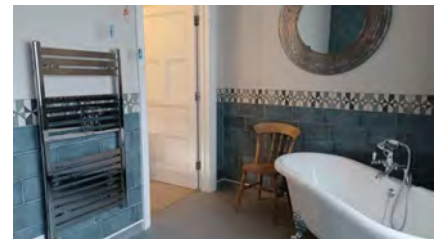
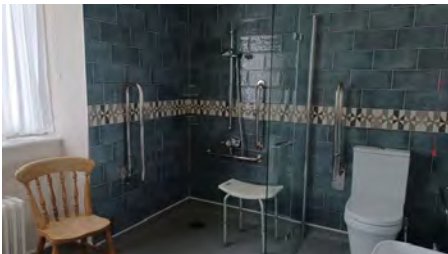
Twin/Double Bedroom (ground floor)



National Trust

- Clear open door width is 84cm
- Twin beds 190cm long x 90cm wide (can be double on request)
- Bed height 62.5cm
- Padded headboard
- Floor has fitted carpet
- Bedside cabinets (height 74cm) each side with table lamp
- Two ceiling lights
- Space at bottom of beds is 100cm wide
- Space to bathroom side of bed is 160cm wide
- Space to opposite side of twin beds is 55cm
- Large freestanding wardrobe with hanging rail (12 hangers)
- Door handles to wardrobe are 113cm high
- Windows overlooking side garden
- Door to garden with door curtains fitted in front
- Tall chest of drawers (113cm high) with four full length drawers and two half-sized drawers. Integral mirror
- Hard-wired fire alarm fitted to ceiling
- Two chairs seat height 45cm and depth 45cm
- Assistance alarm pull cords fitted in two corners of the room
- Radiator

Ensuite shower and WC



- Door opening width is 84cm
- Floor draining shower with level access.
- Lightweight shower stool (49cm H x 51cm W x 30cm D). Handrail, shower screen
- Shower controls 86cm high. The bottom end of the riser rail is 99cm from floor level
- WC is 50cm high with a handrail on both sides
- Freestanding rolltop bath (63cm high) Shower attachment and lever taps
- Washbasin 74cm high with lever taps and mirror over
- Small freestanding storage unit
- Two solid pine chairs (seat height 47cm, depth 36cm),
- Radiator
- Heated towel rail
- Emergency assistance alarms
- Window overlooking parking area with net curtains and Roman blind

First Floor

Stairgate fitted at the top of the stairs. Large landing space fitted with radiator. Fire escape door in to next door apartment for use in emergencies.

Master Bedroom



-
- Spacious master bedroom with views over Helford River, canopied bed, two winged armchairs, large freestanding linen cupboard with hanging space either side
- Windowseat (seat depth 38cm, seat height 36cm)
- Bed is 152cm wide x 76cm high x 208cm long
- Bedside tables with lamps either side (66cm high and 64 cm high)
- Two upholstered winged armchairs with seat height of 48cm and seat depth of 53cm
- Dressing table with stool and integrated mirror
- Round wooden occasional table 70cm high
- Freestanding mirror
- Large wardrobes with hanging space and 12 hangers provided
- Two central lights
- Hard wired fire alarm fitted to ceiling
- Radiator

Ensuite bathroom

- Bathroom with shower over bath, basin and WC
- Vinyl flooring
- Door 76cm wide
- Bath with twist taps and grab rails is 56cm H x 166cm L x 67cm W
- Shower over bath with independent shower controls
- Height of sink is 76cm
- Height of WC is 40cm
- Heated towel rail
- Slip proof mat provided for use in bath



Twin bedroom overlooking forecourt

- Door opening width of 74cm
- Beds 90cm wide x 190cm long x 62cm high (can be double on request)
- Bedside cabinets (74cm high) with lamps either side
- Chest of drawers with three full sized drawers
- Built-in wardrobe with hanging rail and 12 hangers
- Two upright chairs (seat heights 45cm and 47cm)
- Windows overlooking forecourt
- Wall-mounted mirror
- Central ceiling light
- Radiator
- Fire alarm fitted to ceiling



Twin bedroom overlooking side garden

- Door opening width of 72cm
- Beds 90cm wide x 190cm long x 62cm high (can be double on request)
- Bedside cabinets (height 71cm) with lamps either side
- Central ceiling light
- Chest of drawers with three full length drawers
- Built in wardrobe with hanging rail and 12 hangers
- Two upright chairs (seat height 47cm)
- Radiator
- Fire alarm fitted to ceiling
- Wall mounted mirror
- Windows overlooking garden to the side of Bosloe House



Bathroom

- Bathroom with bath, basin and WC
- Vinyl floor
- Door 76cm wide
- Bath with twist taps and grips (56cm H x 166cm L x 67cm W. Slip proof mat provided
- Shower over bath with independent shower controls
- Height of sink is 76cm
- Mirror over sink with shaving light
- Height of WC is 40cm
- Heated towel rail
- Storage cabinet
- Ceiling vent
- Three ceiling lights
- Radiator
- Window overlooking side garden with Roman blinds



Garden

- The apartment has a designated grassed garden area to the side of Bosloe House
- At the front overlooking the Helford Estuary, a section of the shingled terrace area is designated for Chatham. There is a rectangular table (275cm L x 125cm W x 74cm H) with knee clearance of 68cm) and eight garden chairs (seat height 45cm).
- A barbecue can also be used on the terrace area
- The lawned area is flat but access is down two flights of steps (10 steps, and then 6 steps all 15cm). There is a level-access concrete path round the side of the house leading into the garden.
- There is access from the garden on to the Southwest coast path.



Additional Information

Facilities at all cottages

The National Trust aims to expand the list of accessible /equipment/items available at each cottage and these may include

- Cordless kettle
- Hollowfibre bedding
- Chair with armrests
- Good reading light
- Large handle vegetable peeler
- Easy tin opener
- Non-slip mat for bath/shower
- Non-slip place mat
- Easy jar opener
- Information in alternative formats (on request)

Please note that we cannot guarantee that all items will be available at the time of your visit. Please enquire at the time of booking regarding any particular requests.

Specialist equipment

Other specialist equipment such as wheelchairs, bath seats, toilet frames etc may be available for loan or purchase from the local Red Cross loan centre. Please check this out before booking the Cottage and contact us if you require further information.

<https://www.redcross.org.uk/get-help/borrow-a-wheelchair>

<https://www.redcross.org.uk/get-help/hire-a-toilet-aid>

Future Plans to improve Access to National Trust Holiday Accommodation

- We are currently in the process of writing accessibility guides for all our holiday cottages and bunkhouses and improving access over time for all our guests. All feedback is very helpful in informing us of ways in which we can improve access. We welcome any comments or ideas from you about access at this cottage and thank you for taking the time to do this. Please do this in the most convenient way for you. See contact details below or information on website.

About the Accessibility Guide

- This Accessibility Guide is intended to provide key information about the accommodation that may be particularly relevant to guests with disabilities. Please contact us prior to booking if you would like information that is more specific and we will be happy to oblige.
Email: holiday.enquiries@nationaltrust.org.uk
Phone: 0344 8002070



Access for All at the National Trust

- The Access for All office works to improve access at all National Trust accommodation and properties. The office welcomes comments and ideas on improving access.

Phone: 01793 818531

Email: accessforall@nationaltrust.org.uk

December 2022