

National Trust Chert Cottage Accessibility Guide

Chert
Castle Court
St Lawrence
PO38 1UE

Ref 001010
Sleeps 4 + Cot
No Dogs



Introduction

- A unique mirror image 1970's house situated in St Lawrence, containing many original features
- Set against wooded cliffs, with far reaching sea views from the first-floor accommodation.
- The St Lawrence area is set in hilly coastal areas.
- Chert is a very light south facing house with large windows across the whole property and with a balcony to the front
- A rectangular pond sits alongside the left-hand side of the property which is fed from rainwater collected from the gutters
- Chert accommodates 4 guests plus cot
- Heating is provided by gas central heating
- Wi-Fi is available. The mobile phone signal is poor due to location
- Crockery is white with dandelion pattern in turquoise and yellow

Pre-Arrival

- See the main webpage for booking and location details
- Please contact us prior to booking if you have any specific access requirements
- Directions provided with booking

Approach, arrival and parking

- Approaching Chert from the main A3055 turning right into Castle Road, travelling uphill in a residential area, turning left into Castle Close and further along right into Castle Court which heads uphill and bears around to the left. Parts of the road are steep
- Chert is situated on the righthand side at the far end of the road
- Off road parking to the front on hard standing for 2 cars
- Driveways and pathways are concrete slabs with mosaics set in so are uneven
- Pathways around the right-hand side to the main entrance, with steps leading directly to first floor where narrow path running along the back of the house – this can become slippery
- Left-hand side path passes a pond and then leads to an entrance door which is situated in an open garage
- Chert is approx. ½ mile from the number 6 Southern bus route with a stop available on Park Avenue



Getting in (and out) of the cottage

- Chert can be accessed via the main entrances located to the right-hand side of the property and to the rear of the property via the garage or side entrance on the left hand-side
- A sliding glass door to the front also accesses the central lobby with spiral staircase to the main living space
- Ground floor comprises front entrance corridor, Utility room and main entrance lobby with spiral staircase, open garage, WC
- First floor comprises entrance hall with door to balcony, 1 twin and 1 double bedroom, dining room, sitting room, kitchen and 'show' kitchen, bathroom with WC, shower room with WC.
- Throughout the cottages bi-fold doors open to allow the whole floor to be open plan

Getting around the cottage

Ground floor

- Entering the ground floor via the entrance to the right of the property
- Key safe located to the right hand-side at a 150cm. entrance light switch on right-hand side
- Open carpeted tiled corridor leads to the front door. Door opens towards you

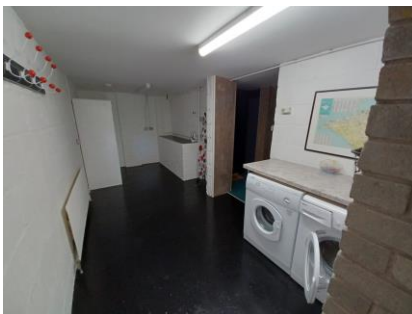
WC

- Straight ahead a sliding panel door opens to the Toilet, 42cm seat height, flush handle on the cistern
- Light switches to the left hand-side, utility and front hall



Utility room

- To the right is the spacious utility area housing washing machine and tumble dryer, iron and board
- Painted concrete floor
- Work top at 92cm
- Entrance door 76cm wide, from open garage and bin storage, switch left-hand side internally



Garage

- Up an over door
- Light switch inside on the left-hand side plus sensor light
- Open entrance at the back
- Door leading to utility area 76cm
- Key safe on back wall at height of 150cm

- Contains bin storage



Main entrance lobby

- To the left hand-side a door leads to the main access for the first floor
- The floor is inlaid with local stones in a decorative pattern and the walls are floor to ceiling mirrors.
- Sliding glass door with handle, Light switch on the right-hand side
- A metal staircase with a fixed handrail and corkscrew design turns 270°
- 13 steps with a tread of 19cm
- Top of staircase is a narrow gate opening of 56cm



First Floor

- Spacious landing with large, recessed spotlights
- Central point for accommodation
- Access to the balcony via sliding door, outside table and easy chairs
- Circular table 70cm high and 2 chairs with 47cm seat height
- All flooring is lino with no thresholds, flat
- Doors into dining room, sitting room, 1 twin bedroom, 1 double bedroom, and kitchen all have double folding doors so spacious openings 125cm wide
- Other doorways i.e. into the bathroom and shower room have narrow doorways of 54cm and corridors leading to them of 58cm
- Fire alarm test point



Sitting Room

- Sitting room is located to the left-hand side of the main landing on entering
- Light switch on the right-hand side of the doors
- Double folding doors open to 125cm wide
- Sofa with seat height 42cm, arms 66cm
- 2 'Eames' style swivel chairs, seat 46cm, arm 59cm back 100cm high with separate footrests 40cm max high
- Tabletop angle poise lamp – touch switch on the head
- 2 floor standing angle poised lamps, with foot switch
- Central 1970's style large, recessed spotlight
- TV 32"- and DVD player
- Record player
- Circular glass top coffee table, 45cm high
- Large south facing windows fitted with venetian blinds
- 2 Sliding windows, with a door handle style catch. These original windows are heavy to slide
- Built-in cupboards with vinyl top
- Cupboard containing books, games and local information
- Heating thermostat
- Doorways to 'show kitchen' and twin bedroom
- Decorated in black and white with highlights of bright orange



Dining Room

- Dining room is located to the right-hand side of the main landing
- Light switch on the right-hand side, inside the door
- Double folding doors open to 125cm wide
- Central 1970's style large, recessed spotlight
- Table 75cm high of chrome with a glass top, leather and chrome style chairs 48cm high with no arms
- Large south facing windows fitted with venetian blinds
- 2 Sliding windows, with a door handle style catch. These original windows are heavy to slide
- 2 angle poise floor standing lamps with foot switch
- Decorative shelving and built-in cupboards with vinyl top
- Cupboard containing highchair and travel cot
- Doorways to kitchen and double bedroom
- Decorated in black and white with highlights of bright orange



Kitchen

- A small galley style kitchen
- Light switch on left-hand side by the door
- 4 under counter cupboards
- Worktop height of 91cm
- Sink with plastic twist top taps (not pillar) no draining board
- Free-standing electric double oven, 4 hot plates
- Fridge freezer, 135cm high, with cupboard over
- Kettle
- Toaster
- Large cupboard for crockery and glassware, 'pull down' cupboard door reveals a turquoise interior, cupboard under
- Large window faces north and is fitted with a roller blind
- Fire blanket, fire action notice
- Cupboard containing gas boiler
- Doorway to bathroom, WC, and corridor to double bedroom
- Decorated in black and white



Second 'show' Kitchen

- This is not fully equipped as only really for 'show'
- Light switch on the right-hand side of the worktop
- 2 burner gas hob
- 4 under counter cupboards
- Worktop height of 91cm
- Sink with plastic twist top taps (not pillar) no draining board
- Microwave 800W
- Large cupboard, 'pull down' cupboard door reveals a turquoise interior, cupboard under
- Large window faces north and is fitted with a roller blind
- Utility cupboard
- Doorway to shower room, WC, and corridor to twin bedroom
- Decorated in black and white with highlights of turquoise and orange
- Recess with oil filled addition heaters



Twin Bedroom

- 2 divan style single bed, mattress height 46cm
- Shared bedside cabinet 62cm high
- 2 lamps with switch on cable
- Stool with vinyl top 53cm high
- Built-in cupboard with vinyl top
- Double folding doors open to 125cm wide
- Central 1970's style large, recessed spotlight
- Double built-in wardrobe with shelves
- Wall mirror
- Rug
- Large south facing windows fitted with venetian blinds
- 2 Sliding windows, with a door handle style catch. These original windows are heavy to slide
- Decorated in white with highlights of turquoise and blues
- Corridor leads to shower room, WC



Double Bedroom

- Double divan style bed, mattress height 48cm
- 2 wooden bedside tables 62cm high
- Stool with vinyl top 53cm high
- Built-in cupboard with vinyl top
- Double folding doors open to 125cm wide
- Central 1970's style large, recessed spotlight
- Wall mirror over dressing table cabinet
- Double built-in wardrobe with shelves
- Rug
- Large south facing windows fitted with venetian blinds
- 2 Sliding windows, with a door handle style catch. These original windows are heavy to slide
- Decorated in black and white with highlights of turquoise and blues
- Corridor leads to bathroom, WC



Bathroom

- Original bath and orange Formica bathroom
- 1970's Toilet, seat height 34cm high with a stiff push flush on the top of the cistern
- Light switch on the right-hand side outside door
- Doorway is 54cm wide leads from kitchen and double bedroom
- 1970's Bath with twist top taps (not pillar) and are set into the side panel of the bath 33cm off the floor. Water tap on near side of the bathtub
- Bath side panel 51cm high
- Sink inset into a cabinet 81cm high with twist top plastic taps (not pillar)
- Shaver point
- Mirror
- Window north facing, frosted glass and 'sash style' opening. Fitted with a roller blind
- Decorated in black and white and bright orange



Shower room

- Turquoise Formica shower room
- Electric shower, recessed shower, tray threshold 18cm, shower curtain
- 1970's Toilet, seat height 42cm high with a stiff push flush on the top of the cistern
- Light switch on the left-hand side outside door
- Doorway is 54cm wide leads from second kitchen and twin bedroom
- Sink inset into a cabinet 81cm high with twist top plastic taps (not pillar)
- Floor to ceiling mirror
- Window north facing, frosted glass and 'sash style' opening. Fitted with a roller blind
- Decorated in black and white and turquoise



Garden

- Front of house paved and used for parking
- No lawn
- Pond to side of property
- Rear has narrow path with steep bank
- Large balcony (off landing on first floor) to front of property with sea views
- 2 outdoor synthetic wicker chairs, 2-seater synthetic wicker sofa and circular drinks table.
- Step leading to balcony 130 mm with sliding doors

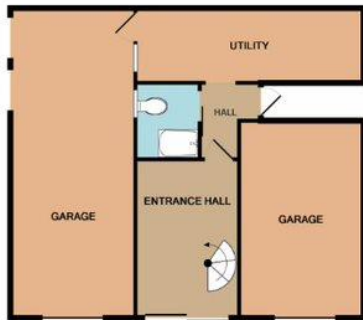


Additional Information

Due to the steep spiral metal staircase and the uncovered garden pond, these hazards may make the cottage unsuitable for children under 12 years



1ST FLOOR
APPROX. FLOOR
AREA 1141 SQ.FT.
(106.3 SQ.M.)



GROUND FLOOR
APPROX. FLOOR
AREA 703 SQ.FT.
(65.3 SQ.M.)

CHERT
TOTAL APPROX. FLOOR AREA 1843 SQ.FT. (171.3 SQ.M.)
While every attempt has been made to ensure the accuracy of the floor plan contained here, measurements of doors, windows, rooms and any other items are approximate and no responsibility is taken for any error, omission, or misstatement. This plan is for illustrative purposes only and should be used as such by any prospective purchaser. The services, systems and appliances shown have not been tested and no guarantee as to their operability or efficiency can be given.
Made with Metropix ©2019

Facilities at all cottages

The National Trust aims to expand the list of accessible /equipment/items available at each cottage and these may include

- Cordless kettle
- Hollowfibre bedding
- Chair with armrests
- Good reading light
- Large handle vegetable peeler
- Easy tin opener
- Non-slip mat for bath/shower
- Non-slip place mat
- Easy jar opener
- Information in alternative formats (on request)

Please note that we cannot guarantee that all items will be available at the time of your visit. Please enquire at the time of booking regarding any particular requests.

Specialist equipment

Other specialist equipment such as wheelchairs, bath seats, toilet frames etc may be available for loan or purchase from the local Red Cross loan centre. Please check this out before booking the Cottage and contact us if you require further information.

<http://www.redcross.org.uk/standard.asp?id=89425>

Future Plans to improve Access to National Trust Holiday Accommodation

- We are currently in the process of writing accessibility guides for all our holiday cottages and bunkhouses and improving access over time for all our guests. All feedback is very helpful in informing us of ways in which we can improve access. We welcome any comments or ideas from you about access at this cottage and thank you for taking the time to do this. Please do this in the most convenient way for you. See contact details below or information on website.

About the Accessibility Guide

- This Accessibility Guide is intended to provide key information about the accommodation that may be particularly relevant to guests with disabilities. Please contact us prior to booking if you would like information that is more specific and we will be happy to oblige.
Email: cottages@nationaltrust.org.uk
Phone: 0344 8002070

Access for All at the National Trust

- The Access for All office works to improve access at all National Trust accommodation and properties. The office welcomes comments and ideas on improving access.
Phone: 01793 818531
Email: accessforall@nationaltrust.org.uk

Date August 2022