

## Accessibility Guide

### Choristers House

Fountains Abbey and  
Studley Royal  
Ripon  
HG4 3DY

What3Words:

///cheerful.overjoyed.once

Brochure ref: 020022



### Introduction

Situated in the Studley Royal Deer Park, next to St Marys Church, this Burges designed house stands on its own with wonderful views across the estate. Now a holiday home, Chorister's sleeps up to ten people. Entrances are all stepped but once inside, the ground floor is level and is accessible to all key rooms. On the ground floor there is a double bedroom with a curtained- off corner cubicle shower. The ground floor WC, kitchen and utility room is not fully accessible to a wheelchair user. This holiday home is suitable for a family group with an ambulant disabled person who uses a stick and who would prefer to sleep on the ground floor.

### Pre-Arrival

- See the main webpage for Abbey Cottage (<https://www.nationaltrust.org.uk/holidays/choristers-house-yorkshire>) for booking and location details.
- To enable our housekeepers to prepare the cottage for any particular accessibility requirements you might have, please contact [guestrelations@nationaltrust.org.uk](mailto:guestrelations@nationaltrust.org.uk).
- Directions are provided electronically three weeks prior to travel. If you need a printed (or large print) version of any of our holiday documents, please contact [guestrelations@nationaltrust.org.uk](mailto:guestrelations@nationaltrust.org.uk).

If, having read this accessibility guide, you still require further information, e.g. a social storybook guide, please contact [guestrelations@nationaltrust.org.uk](mailto:guestrelations@nationaltrust.org.uk)

## **The Cottage is arranged as follows:**

**Ground Floor:** formal sitting room with log burner, casual sitting room, double bedroom with shower, dining room, kitchen, utility room off the kitchen and a lavatory.

**First Floor:** four bedrooms (2 twins and 2 doubles 1 with 5' bed and en-suite bathroom), shower room and bathroom with shower over bath.

## **Facilities**

Television, dishwasher, washing machine, tumble-dryer, cot, highchair, freezer

## **Approach**

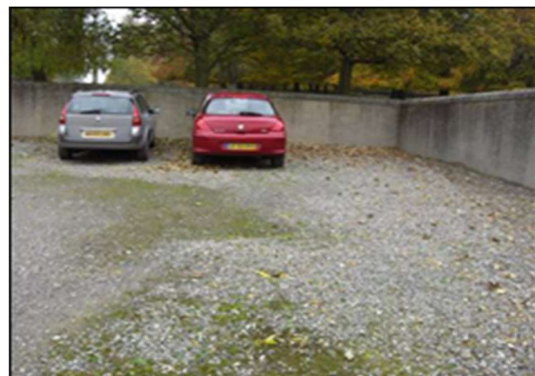
Surrounding park-land is level with a path leading up to the Church which is slightly sloped.

Please note that this is also a deer park

## **Arrival & Parking Facilities**

The enclosed car-park is easy to see on arrival at the House

Level surfaces (loose stone dressing, deep in places)



## Getting in (and out) of the cottage



Fig: 1



Fig: 2



Fig: 3

- Two stone steps into the property. Varying height steps of 200mm and 140mm threshold of 40mm. Fig: 1
- The front entrance is stepped at the boundary wall and into the small covered arched terrace. Fig: 2
- This steep flight of steps in Fig: 3 are for emergency use only and lead from one of the double bedrooms on the first floor.

## Getting around the cottage

### Ground floor:

Level throughout the ground floor.

Doors are generally wide <750mm, with the exception of the door into the utility room

Corridors are generally in excess of 1.2m. Except from the kitchen which is 880mm wide.

Floor coverings are of timber floor-boards and rugs, ceramic tiles, generally close-weave but some thick pile carpet, and vinyl (in wet areas)

Illumination levels are generally very good. Day-time natural light through large windows. Good levels of artificial light, generally low-energy units, chandeliers and arts and crafts designs.

## First floor:

Steps – set of three carpeted steps on the upper floor turret bedroom. Fig: 14

Floor covering is mainly moderate to thick pile carpet on this first floor Illumination levels are generally very good. Good views from most windows.

## Kitchen



Fig: 4



Fig: 5

- Door into kitchen 760mm clear width. No thresholds
- Cordless kettle, microwave (clear controls)
- Electric oven and hob
- Washing machine, dryer and fridge/freezer are in the utility room off the kitchen
- One counter with some space under
- Lever mixer-tap to sink
- Utility room is through a doorway but no door (Fig: 5)



## Ground floor Double Bedroom with in-room shower



Fig: 6



Fig: 7

- Shower unit at 1560mm to centre. Riser bar at 1400mm
- Shower unit and basin (no toilet) Writing Desk, 2x Table Lamps. Small 3 drawer chest
- Hand-basin in vanity unit at 820mm to rim. Pillar taps. Bed height
- 650mm to top. Wooden Chair Seat Height 470mm.
- Wardrobe and Writing Desk 720mm high.
- Separate lavatory on ground floor by the back door with pan-height of 430mm.
- Sitting Room - formal



Fig: 8

- Ceiling and 4 x table lamps
- Very large windows
- Coffee Table 390mm high
- Very large room, good circulation on moderate weave carpet Fig: 8
- Door into lounge 800mm
- Log burner
- Dresser 700mm high with CD Player
- Carpeted throughout- close weave
- 2 x 2-3 seater settee with 420mm height to top of cushion. Soft cushions.
- 2x Arm chairs with 450mm to top of seat cushions
- 2 Seater Settee 450mm to seat cushion
- High Back cloth chair 460mm to seat cushion
- Leather bureau chair 430mm to seat, 740mm to arms

## TV Sitting Room (Informal)



Fig: 9

- Door 800mm wide, easy to open
- Moderate weave carpet.
- Large well lit room
- 1x 3-seater settee 480mm to seat cushion, 770mm to arms. 2x leather bucket armchairs 440mm high to seat, 780mm high to seat back
- TV and separate DVD Player Occasional tables
- Central light, standard lamp

## Dining Room Fig:10



- Bureau with Table Lamp
- Door 800mm clear width, no threshold
- Solid wooden table 910mm x 2750mm
- 5 Wooden cloth armless chairs 500mm to seat height 1090mm to seat back
- 2 Wooden cloth with arms chairs 660mm to seat height 1060mm to seat back
- Standard Lamp
- 3 Wooden occasional chairs 470mm to seat cushion, 960mm to height back

## Stairs to First Floor

- Stairs to half landing, clear width 800mm. All stairs at 190mm high. Fig: 11
- Further three steps from half landing to bed-rooms, shower-room and bathroom. Fig: 12
- Thick carpet. Bannister rail to one side.
- Dado rail to other side

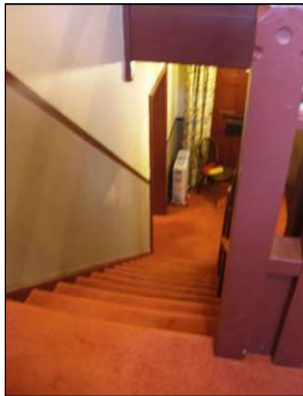


Fig: 11

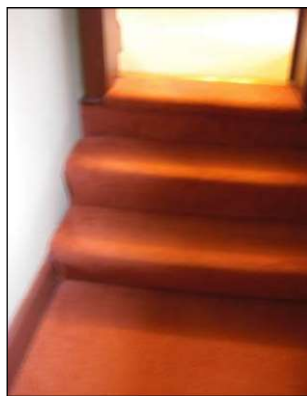


Fig: 12

## Twin Bedroom and Double Bedroom



- Triple Wardrobe
- Wooden Airer

Vanity Table 830mm high to surface with

- mirror and wooden chair 470mm seat height and 950mm height to back of chair
- 2 x Table Lamps on corner units



- Double Wardrobe
- 3 Drawer Chest of drawers 810mm high with Table Lamp
- Wooden Chair 480mm to seat and 1030mm seat height back
- 2 x bedside chest of drawers 730mm high with 2 x Table lamps



## Shower Room (First Floor)



- Cubicle shower with sub-plinth 320mm(w) 150mm high step and 90mm threshold
- WC 470mm to seat, no grab-rails

## Bathroom (First Floor)



- Roll-top bath 630mm high with original feet with shower over bath. Mixer shower unit and short riser bar
- Sink at 850mm to rim
- WC 450mm high to seat



## Ensuite Bedroom (First Floor)



- En-suite bath-room to double bed-room
- Electric shower unit and long hose over bath
- Integral hand-grips to bath. Bath size 540mm
- WC 420mm high to seat



One en-suite double bed-room with door width of 800mm, bed at 640mm, 2 table lamps and bed-room chair with door to fire-exit steps. (behind bathroom curtain)

Stairs x 3 leading to main bedroom, door width 720mm, Fig: 14 heights of 160, 170, 170mm

## Second Twin Bedroom (First Floor)



- 650mm high to top of beds
- Good circulation space
- Good natural illumination and central and 2 x bed-side lamps
- Bed-room stool (470mm high) and vanity unit
- Chest of drawers and wardrobe

## Garden



- Small enclosed garden, with lawn, tables, chairs and benches under the terrace.
- Leads onto open parkland with views of St Mary's Church

## Additional Information

- Assistance dogs are welcome at all our cottages. If you are bringing an assistance dog to a non-dog cottage, please contact [guestrelations@nationaltrust.org.uk](mailto:guestrelations@nationaltrust.org.uk) so we may contact all future guests in case of an allergy.
- In the event of a fire, it is the responsibility of the guests to evacuate themselves. Under pillow vibration alarms are available if requested at time of booking.
- If you required the WiFi to be turned off, please advise us in advance.
- If you have any allergies, please contact [guestrelations@nationaltrust.org.uk](mailto:guestrelations@nationaltrust.org.uk).

## Specialist equipment

Other specialist equipment such as wheelchairs, bath seats, toilet frames, hoists etc. may be available for loan or purchase from a local disability equipment provider. For further details, please contact [guestrelations@nationaltrust.org.uk](mailto:guestrelations@nationaltrust.org.uk). Please note that any contacts supplied are done so in good faith and are not endorsed by the National Trust.

## Feedback

All feedback is very helpful in informing us of ways in which we can improve access to all our accommodation. We welcome any comments or ideas from you to [guestrelations@nationaltrust.org.uk](mailto:guestrelations@nationaltrust.org.uk).