

National Trust

National Trust Cottages Accessibility Guide

Crocker's Cottage
Coleton Fishacre
Devon



Property Ref: 012020

Introduction

A semi-detached cottage, remotely located at the end of a track on the Coleton Fishacre estate, and surrounded by countryside/farmland.

Sleeps up to 4 people in 3 bedrooms, bathroom with shower over the bath and with minimum doorway widths of 550mm in bathroom and a single bedroom

The property has electric heating and a wood burner

There is an enclosed level front garden and a raised terrace garden accessed by steep steps

Mobile signal and WIFI is not available

The Cottage is arranged as follows:

Ground floor

Open-plan kitchen/dining/sitting room with solid fuel stove.

First floor

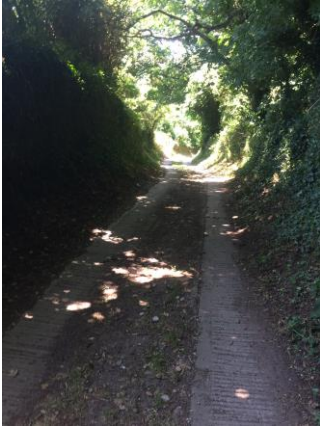
Three bedrooms (1 double, 2 singles), bathroom with shower over bath.

Pre-Arrival

- See the main webpage for booking and location details.
- Please contact us prior to booking if you have any specific access requirements.
- Directions provided with booking

Approach

The property is approached via a steep no through single track lane with high banks.



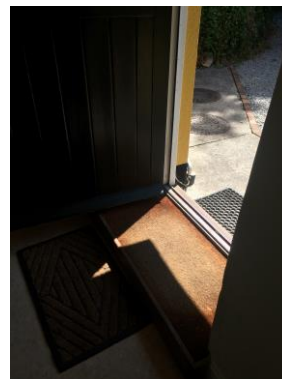
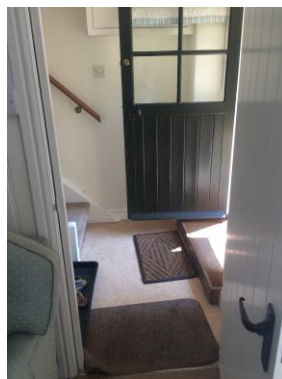
Arrival & Parking Facilities

- There is parking for one vehicle at the front of the cottage, with additional parking about 100 metres away
- Double gates to parking area. Parking area is compacted gravel
- There is outside lighting by the front door but if arriving after dark it is advisable to have a torch



Getting in (and out) of the cottage

- Half glazed front door, width 800mm, height 1780mm, outside rubber door mat
- Coir mat threshold, tread of 54mm with a low step up 10mm and drop 12mm
- Combination dial key box, height 1550mm to the left of the front door
- Opens into a hallway, width 850mm, length 1700mm
- Linoleum floor with 2 x rubber backed mats and removable boot tray
- Coat hooks at a height of 1620mm
- Ceiling light



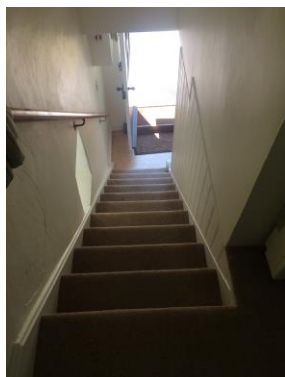
Getting around the cottage

Ground floor:

- Open plan living/dining/kitchen. Cottage is built into a bank therefore the downstairs floor area has a smaller footprint than upstairs

First floor:

- Carpeted straight stairs with a step height of 200mm, tread 250mm, width 680mm
- Handrail banister to the right with ascending
- Ceiling light and side window over terrace garden area and woodland
- 2 x carpeted sloping landing areas, initial landing width 970mm, back landing 1100 by 1000mm
- Open doorway between landing areas width 730mm, height 1750mm, small threshold step up of 40mm



Open plan living room and kitchen

- Door width 680mm, height 1900mm, level threshold
- Carpet in living/dining area and linoleum in kitchen area
- Wood burner with fire guard
- 1 x 2 seater settee, seat height 400mm
- 2 x armchairs, seat height 500mm
- Window with views over front garden and side garden and steps to terraced garden area
- 2 x ceiling lights, 2 x pairs of wall lights
- Table height 730mm, clearance underneath 590mm
- 4 x wooden dining chairs, seat height 450mm
- Height of worktop 920mm
- Fitted kitchen with electric double oven and ceramic hob, tall fridge/freezer, slim-line dishwasher, microwave
- Sink with mixer taps with ceramic washers
- Sloping ceiling with restrictive head height in corner of the kitchen by the dishwasher
- Good circulation, flexible layout



Double Bedroom

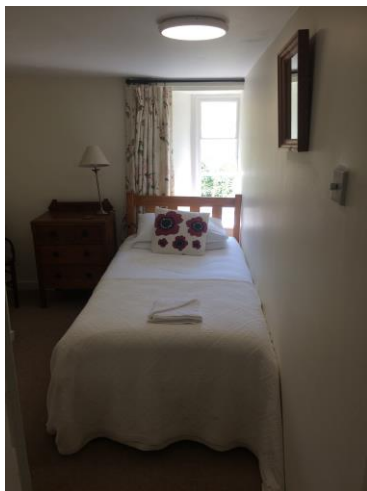
- Door width, 710mm level threshold
- Carpet
- Double divan bed width 1500mm, length 2000mm, height 630mm
- 2 x side tables, bedside lamps with under lampshade on/off switches
- Ceiling light
- Window with views over front garden and to countryside/fields
- Chair with a seat height 430mm
- Chest of drawers, hanging rail behind a curtain, rail height 1800mm

- Good circulation to the sides of the bed, circulation at the end of bed 430mm



Single bedroom

- Door width 690mm, height 1870mm level threshold, Suffolk latch
- Carpet
- Single bed width 900mm length 1900mm, height 600mm, space under bed height 300mm
- Chest of drawers with bedside lamps with under lampshade on/off
- Ceiling light,
- 2 x windows with views over the front garden/countryside/fields and side garden/woodland
- Wall hooks with hangers, height 1620mm
- Chair, seat height 440mm
- Circulation to the side of the bed 720mm and at the end of the bed 920mm



Single bedroom

- Door width 550mm, height 1830mm, level threshold
- Carpet
- Single bed width 900mm, length 1900mm, height 600mm, space under bed height 300mm
- Chest of drawers with bedside lamp with under lampshade on/off switch
- Ceiling light
- Window with views over the back bank
- Hangers on a hook on the back of the door, height 1650mm
- Narrow circulation at the end of the bed 150mm, side of bed 420mm, side of bed to door 970mm

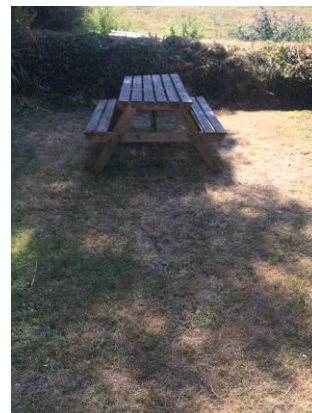


Bathroom

- Door width 550mm, height 1830mm, level threshold
- Linoleum floor
- Toilet, sink and bath with electric shower
- Toilet height 430mm with lever handle on the right
- Bath height 570mm with washer twist taps, and grab handles
- Pivoted shower screen, part fixed
- Sink height 820mm with washer twist taps
- Shaver socket height 1830mm
- 3 x sunken ceiling lights, skylight
- Circulation width around the bath 630mm, width by toilet 720mm, width between bath and sink 500mm

Garden

- Access to the garden is via the front door
- Level front garden laid to lawn with a picnic bench
- Further terraced level lawn with bistro set accessed via quarter turn steep steps, handrails



Additional Information

- Assistance dogs are welcome at all our cottages
- In the event of a fire, it is the responsibility of the guests to evacuate themselves. Vibrating fire/smoke detectors are available if requested at time of booking. Please contact us if you have any other specific access requirements in this respect.

Facilities at all cottages

The National Trust aims to expand the list of accessible /equipment/items available at each cottage and these may include

- Cordless kettle
- Hollowfibre bedding
- Chair with armrests
- Good reading light
- Large handle vegetable peeler
- Easy tin opener
- Non-slip mat for bath/shower
- Non-slip place mat
- Easy jar opener
- Information in alternative formats (on request)

Please note that we cannot guarantee that all items will be available at the time of your visit. Please enquire at the time of booking regarding any particular requests.

Specialist equipment

Other specialist equipment such as wheelchairs, bath seats, toilet frames etc may be available for loan or purchase from the local Red Cross loan centre. Please check this out before booking the Cottage and contact us if you require further information.

<http://www.redcross.org.uk/standard.asp?id=89425>

Future Plans to improve Accessibility to National Trust Holiday Cottages

We are currently in the process of writing accessibility guides for all our holiday cottages and improving access over time for all our guests. All feedback is very helpful in informing us of ways in which we can improve access to all our cottages. We welcome any comments or ideas from you about access at this cottage and thank you for taking the time to do this. Please do this in the most convenient way for you. See contact details below or information on website.

About the Accessibility Guide

This Accessibility Guide is intended to provide key information about the cottage that may be particularly relevant to guests with disabilities. It is reviewed annually. Please contact us prior to booking if you would like more detailed information and we will be happy to oblige.

Phone: 0344 800 2070

Email: cottages@nationaltrust.org.uk

Access for All at the National Trust

We continue to work to improve accessibility at all our holiday cottages. We welcome comments and ideas on improving access.

Phone: 0844 800 2070

Email: cottages@nationaltrust.org.uk

Date 14 July 2018