

## National Trust Cottages Accessibility Guide

(December 2023)

Portbraddan Cottage,  
26 Portbraddan Road,  
Bushmills  
Co. Antrim  
BT57 8TA  
Ref: 019015



### Introduction

- Portbraddan Cottage is a two-storey cottage overlooking White Park Bay, with Rathlin Island in the distance.
- The cottage can be accessed through the front door, up two steps, or through the garage door - one small step up to the garage and another step up to the house. There is also a door at the rear of the property.

The Cottage is arranged as follows:

*Ground Floor:*

- Kitchen/dining room, sitting room, utility room, toilet, cloakroom / store, garage

*First Floor:*

- One double bedroom, two twin bedrooms, bathroom (with shower over bath) toilet and sink, shower room with toilet and sink

### Pre-Arrival

- See the main webpage for booking and location details
- Please contact us prior to booking if you have any specific access requirements
- Directions provided with booking
- Please bring a torch if arriving in dark



### Approach

- Narrow road leading down to Portbraddan Harbour area
- The house is one of a small terrace of houses and is identifiable by a name plate showing National Trust logo

### Arrival & Parking Facilities

- Parking is available on the driveway to the side of the house. Garage may also be used.
- The key for the cottage is kept in a key safe attached to the surround of the ground floor side window. The key safe is 1500mm from the ground



## Getting in (and out) of the cottage

- Access via the front door of the cottage is through a 770mm wide door leading into a small hallway
- Access via the front door is up two steps, 110mm and 130mm high



## Getting around the cottage

### *Ground Floor*

- Sitting room, kitchen / dining room and utility room have level access
- Downstairs toilet and cloakroom / store is accessed by two steps up, 175mm and 150mm high
- Floor surfaces are a mixture of tiles and wood
- Internal door widths are 740-820mm

### *First Floor*

- Carpeted staircase, 720mm wide, leading to first floor with handrail on left hand side ascending

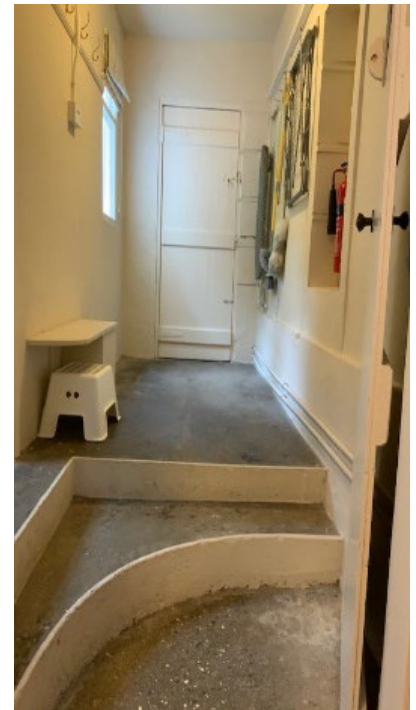
## Downstairs WC

- Door access is 735mm wide
- Room is 1520mm long x 840 mm wide
- Comprises of WC and wash hand basin
- The WC is 420mm high
- Hand basin is 840mm high



## Cloakroom / Downstairs Store

- Area measures 4000mm x 2180mm
- Door access to garage is 770mm wide, with one step 70mm deep down to garage
- Door access to utility room is 770mm wide, with two steps measuring 175mm and 150mm, down to utility room
- Hooks on wall for coats along left hand wall
- Hooks on opposite wall holding ironing board, broom, dustpan and brush, dusters
- Mop and bucket
- Two fire extinguishers placed on a shelf along right hand wall – 6lt Foam extinguisher and 2kg CO2 extinguisher
- Electricity meter and fuse board located above door to utility room



## Utility Room

- 730mm wide door to kitchen
- 770mm wide door to cloakroom / store
- Washing machine, freezer
- Range of fitted units and sink
- Countertop 900mm high

## Kitchen / Dining room

- Views from kitchen area to the rear garden and from the dining area to White Park Bay
- Room measures 6000mm long x 2730mm wide
- The kitchen has fitted units with cooker and electric hob, dishwasher, fridge and microwave
- Kitchen worktop is 920mm high
- Sink has a mixer lever tap
- One overhead light in kitchen area and another over the dining table
- 730mm wide door to utility room
- 810mm wide door to front hallway
- Dining area with wooden dining table 770mm high with 620mm clear knee space underneath
- Six wooden farmhouse style kitchen chairs, all with backrests
- Chair height is 470mm
- One highchair of wooden construction with relevant restraints - seat height 560mm
- Fire blanket attached to side to high kitchen unit, 1700mm high
- Immersion heater switch located on wall above fridge





## Sitting Room

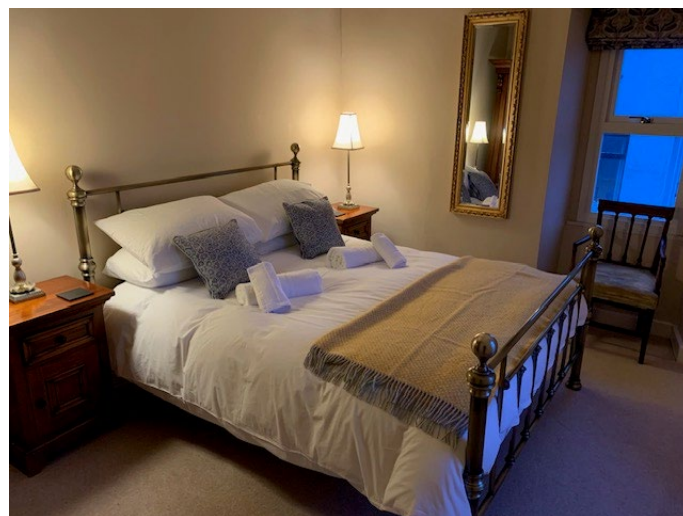
- Views to White Park Bay
- 790mm wide door
- Room has a 3-seater sofa, 2-seater sofa and a winged back armchair
- Seat height ranges from 440-500mm
- Centrally placed coffee table of height 450mm, sideboard in left hand corner and wooden chest in the opposite corner.
- Small table with lamp beside the side window of 730mm height
- Wood burning stove
- Storage cupboard containing WiFi router
- Television and DVD player
- Radio with Bluetooth connectivity
- Thermostat and Carbon Monoxide monitor located far end of left hand wall



on

## Double Bedroom

- Double aspect views to White Park Bay and Rathlin Island
- Door 690mm wide
- Metal frame bed 600mm high x 1950mm long x 1550mm wide. 290mm space under bed
- Small bedside locker with table lamp each side
- Free standing wardrobe
- wooden seat in alcove of side window with arms and padded cushion of 480mm height



## Front Twin Bedroom

- Views out over White Park Bay
- Door to landing 680mm wide
- Room measures 4500mm long x 2200mm wide
- Two Single Metal framed beds placed end to end along the side of the wall. 500mm high x 1900 long x 1000mm wide.
- Bedside table with lamp beside the head of each bed, freestanding storage unit along wall opposite beds, mirror mounted on wall, small wooden chair with arms and padded cushion of 480mm height behind door to landing



## Rear Twin Bedroom

- Views out over rear garden
- Door 685mm wide
- Two Metal framed beds against the wall opposite the bedroom door. 500mm high x 1900 long x 1000mm wide.
- Bedside table with lamps; one between the left-hand bed of 730mm height and the wall and one between the two beds of 650mm height
- Freestanding wardrobe (containing travel cots) and small dressing table with mirror and small wooden chair with arms and padded cushion of 480mm height

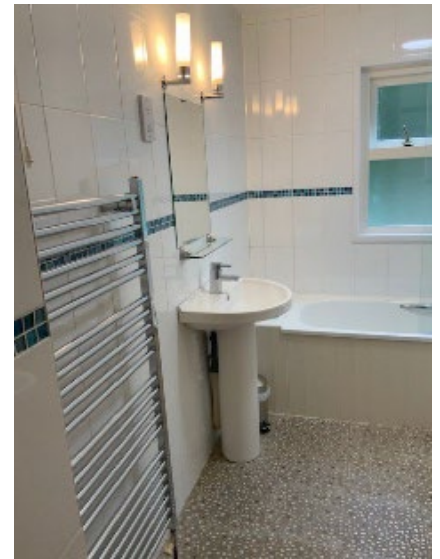


## Bathroom

- Door to landing 700mm wide
- Door to front twin bedroom 740mm
- Bathroom comprises WC, basin with lever mixer tap and shower over bath, with two grab rails attached to the bath
- WC is 420mm high
- Basin is 845mm high
- Bath is 530mm high x 680mm wide x 1680mm long · Shower unit is 1690mm from top of bath
- Lever mixer tap on tap and traditional and lever in shower

## Shower Room

- Door 680mm wide
- WC 440mm high
- Wash hand basin 835mm high with traditional taps
- Enclosed shower unit approximately 850mm x 850mm with curved glass door, 535mm wide door when fully open. Traditional mixer tap.





## Garden

Portbradden Cottage has three different outdoor spaces:

### *Rear Garden*

- Area accessed from rear door of garage
- Area nearest to the rear of the house consists of a concrete yard, containing oil tank, outdoor tap, coal bunker and clothesline
- A concrete path leads up the higher part of the garden which is planted with grass and a variety of plants, shrubs and trees
- A small paved area has a picnic bench
- Paths go through the higher part of the garden, these are uneven in nature with some steps



### *Front Garden*

- Enclosed area between front garden wall and house consisting of perimeter planting, path leading to front door and patio area
- While the front garden is all on one level and the access path is smooth, other parts are uneven due to decorative use of cobbles, slate and tiles

### *Sea Garden*

- Accessed through small gate on opposite side of the small lane in front of the house – identified by name plate with National Trust name and logo
- Garden has different levels. Small concrete ramp to first level, followed by 6 steps, uneven in nature due to their stone and concrete construction, varying from 70-150mm in depth, leading to a terrace area
- Ground in terrace is uneven in places due to large sea pebbles being set into the concrete
- A further 3 steps, uneven and 170-250mm in depth, lead to lowest part of the garden – a gravelled terrace overlooking the sea
- Area surrounded by perimeter planting on the landward side and a stone wall 1050mm high on the seaward side
- Round wooden table and 6 wooden chairs with backrests and arm supports located on lower terrace. Table 725mm high and chairs 395mm high



## **Additional Information**

### **Facilities at all cottages**

The National Trust aims to expand the list of accessible /equipment/items available at each cottage and these may include

- Cordless kettle
- Hollowfibre bedding
- Chair with armrests
- Good reading light
- Large handle vegetable peeler
- Easy tin opener
- Non-slip mat for bath/shower
- Non-slip place mat
- Easy jar opener
- Information in alternative formats (on request)

Please note that we cannot guarantee that all items will be available at the time of your visit. Please enquire at the time of booking regarding any particular requests.

### **Specialist equipment**

Other specialist equipment such as wheelchairs, bath seats, toilet frames etc may be available for loan or purchase from the local Red Cross loan centre. Please check this out before booking the cottage and contact us if you require further information.

<http://www.redcross.org.uk/standard.asp?id=89425>

### **Future Plans to improve Access to National Trust Holiday Accommodation**

- We are currently in the process of writing accessibility guides for all our holiday cottages and bunkhouses and improving access over time for all our guests. All feedback is very helpful in informing us of ways in which we can improve access. We welcome any comments or ideas from you about access at this cottage and thank you for taking the time to do this. Please do this in the most convenient way for you. See contact details below or information on website.

### **About the Accessibility Guide**

- This Accessibility Guide is intended to provide key information about the accommodation that may be particularly relevant to guests with disabilities. Please contact us prior to booking if you would like information that is more specific and we will be happy to oblige.

Email: [holiday.enquiries@nationaltrust.org.uk](mailto:holiday.enquiries@nationaltrust.org.uk)

Phone: 0344 8002070

### **Access for All at the National Trust**

- The Access for All office works to improve access at all National Trust accommodation and properties. The office welcomes comments and ideas on improving access.

Phone: 01793 818531

Email: [accessforall@nationaltrust.org.uk](mailto:accessforall@nationaltrust.org.uk)

Date December 2023