

National Trust Holiday Cottages Access Guide

Diston's Cottage, Snowhill



Property Ref 006005

Introduction

The property is situated in the village of Snowhill opposite Snowhill Manor with direct access onto the country road. There is a steep, terraced back garden. It is the end of a terrace of Cotswold stone cottages. Within the terrace there are three other holiday cottages - Spring Cottage, Honor's Cottage and Manor Farmhouse.

Diston's Cottage sleeps two people in one bedroom with an en-suite bathroom. It is heated by electric night storage heaters and has a wood burner in the sitting room.

There are internal steps between rooms within the property and areas of restrictive ceiling height upstairs.

The Cottage is arranged as follows:

- Ground floor

Sitting room with wood burner and kitchen.

- First floor

One large double bedroom (with 5' bed) and ensuite bathroom.

Pre-Arrival

- See the main webpage for booking and location details.
- Please contact us prior to booking if you have any specific access requirements.
- Directions provided with booking.

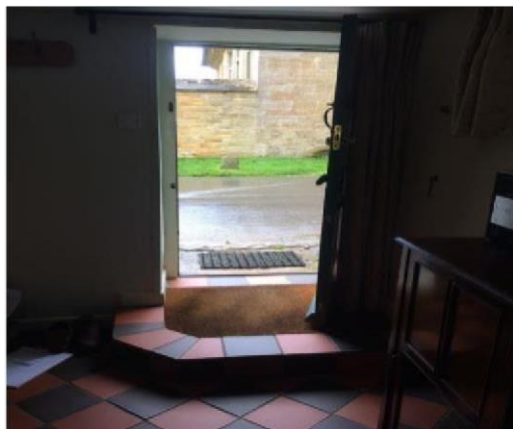
- The property is approached via well maintained country lanes.

Arrival & Parking Facilities

- There is no outside lighting so if arriving after dark it is advisable to have a torch.
- Allocated parking is available in the gently sloping National Trust Staff car park just past the property and on the other side of the lane.
- It is possible to pull in and unload from a vehicle at the front of the property before parking.

Getting in (and out) of the cottage

- Front door width 820mm, no threshold, weather shield metal strip 10mm in height.
- Approach to front door is direct from the lane and level.
- Key box, dial combination lock to the right, height 1350mm.
- Door opens onto a level quarry tiled area 1050mm by 1100mm, sunken door mat.
- Step down into the sitting room, step height 150mm.



Getting around the cottage

- The property has a combination of quarry tile flooring partially covered by a rug in some areas, carpet, linoleum and heavy duty linoleum.
- Three internal steps up to kitchen, height 130mm, tread 400mm, restrictive head height 1730mm.
- One internal step up to bathroom, height 150mm, restrictive head height 1600mm.
- Dark wooden stairs are accessed via a door from the living room, door width 730mm height 1760mm.
- Stairs are quarter turn top and bottom with angular winders 190mm height, 220mm tread and 730mm wide, handrail.



Sitting Room

- Wood burner with guard.
- Black and red quarry tile flooring, rug with anti-slip underlay.
- 1 x two seater settee, seat height 406mm.
- 1 x winged back armchair, seat height 355mm.
- Window seat, height 520mm, depth 360mm
- Triple aspect windows with views over the front lane, back garden and high window to the side.
- Floor lamp with push button on floor, two table lamps with switch on stems, ceiling pendant light.



Kitchen

- Door width 830mm, Suffolk latch.
- Steps up to kitchen, height 130mm, tread 400mm, restrictive head height 1730mm.
- Heavy duty linoleum flooring.
- Height of worktop 920mm.
- Fitted kitchen with electric slim double oven and ceramic hob, under counter fridge with a freezer box.
- Sink with traditional taps.
- Kitchen table height 740mm.
- Two wooden chairs, seat height of 457mm, clearance 102mm.
- Ceiling halogen spotlights.
- Window with views over side garden and back of cottages.
- Half glazed back door to garden, width 850mm, step down 70mm.



Double Bedroom

- Stairs directly access the bedroom, width 900mm.
- Carpeted flooring.
- Metal bed, width 1500mm, length 2000mm, height 730mm, space underneath 400mm.
- Two side tables with table lamps, on/off switch on the cable.
- Two windows with views over the lane to the front and over the side.
- Armchair, seat height 381mm.
- Chest of drawers and hanging rail, height 1650mm.
- Good circulation.
- Restrictive sloping ceiling heights and roof trusses/beams.



Bathroom

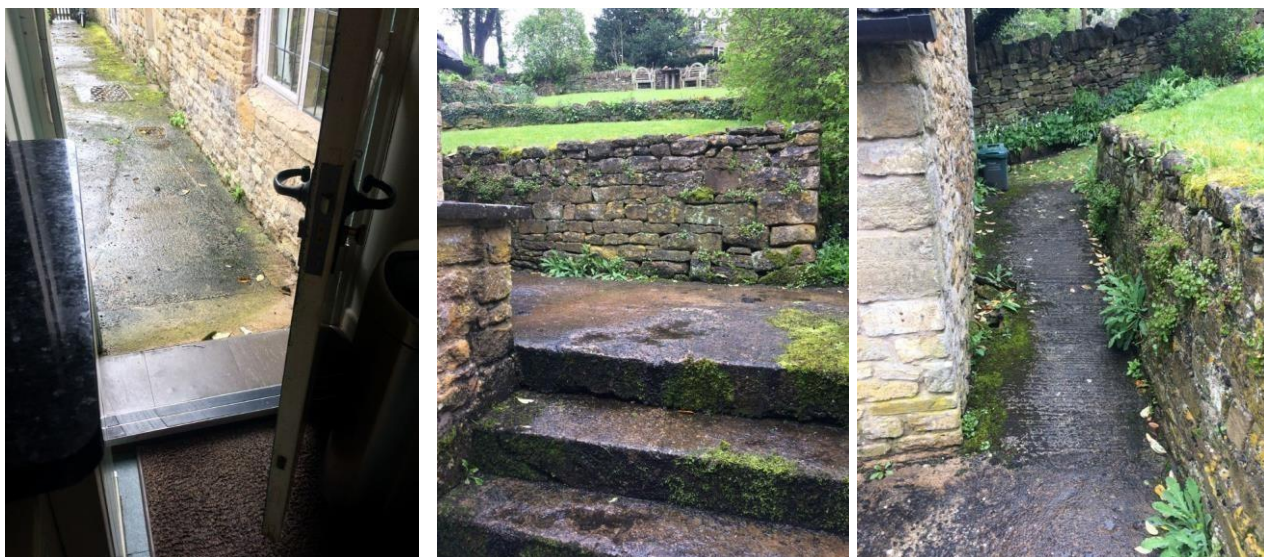
- Door width 620mm, wooden latch.

- Step up to bathroom, height 150mm, restrictive head height 1600mm.
- Uneven linoleum floor.
- Toilet height 420mm, lever handle.
- Bath height 570mm.
- Ceramic twist bath taps with mono mixer tap and lever for hand held shower attachment.
- Sink height 800mm with ceramic twist taps.
- Ceiling light and window over garden.
- Restrictive sloping ceiling on both sides of the room.
- Wooden chair, seat height 330mm.



Garden

- Access to the enclosed garden is via the kitchen door leading onto a concrete area, width 1500mm.
- The garden is a series of terraced lawns accessed via steep stone steps and narrow sloping pathways. The top being particularly steep, sloping and uneven in some areas. Slabs & pathways are uneven, steps and pathways can be slippery when wet. Unfenced ledges in garden.
- There are four wide stone steps to the first lawn, variable heights 160mm to 200mm, tread 250mm to 300mm, pathway width 800mm, followed by two further stone steps.
- Wooden garden seating at top of garden, metal bistro set at lower level, table height 750mm, seat height (with arm rests) 470mm



Additional Information

- Assistance dogs are welcome at all our cottages.
- In the event of a fire, it is the responsibility of the guests to evacuate themselves. Vibrating fire/smoke detectors are available if requested at time of booking. Please contact us if you have any other specific access requirements in this respect.

Facilities at all cottages

The National Trust aims to expand the list of accessible/equipment/items available at each cottage and these may include;

- Cordless kettle
- Hollowfibre bedding
- Chair with armrests
- Good reading light
- Large handle vegetable peeler
- Easy tin opener
- Non-slip mat for bath/shower
- Non-slip place mat
- Easy jar opener
- Information in alternative formats (on request)

Please note that we cannot guarantee that all items will be available at the time of your visit. Please enquire at the time of booking regarding any particular requests.

Specialist equipment

Other specialist equipment such as wheelchairs, bath seats, toilet frames etc may be available for loan or purchase from the local Red Cross loan centre. Please check this out before booking

the Cottage and contact us if you require further information.

<http://www.redcross.org.uk/standard.asp?id=89425>

Future Plans to improve Access to NT Holiday Cottages

We are currently in the process of writing access guides for all our holiday cottages and improving access over time for all our guests. All feedback is very helpful in informing us of ways in which we can improve access to all our cottages. We welcome any comments or ideas from you about access at this cottage and thank you for taking the time to do this. Please do this in the most convenient way for you. See contact details below or information on website.

About the Access Guides

This Access Guide is intended to provide key information about the cottage that may be particularly relevant to guests with disabilities. It is reviewed annually. Please contact us prior to booking if you would like more detailed information and we will be happy to oblige. Phone: 0344 800 2070

Email: cottages@nationaltrust.org.uk

Access for All at the National Trust

We continue to work to improve accessibility at all our holiday cottages. We welcome comments and ideas on improving access.

Phone: 0344 800 2070

Email: cottages@nationaltrust.org.uk

Date March 2024