

National Trust Cottages Accessibility Guide

Doyden Stable Cottage

Doyden

Port Quin

Nr Port Isaac

Cornwall



Cottage Ref: 011113

Introduction

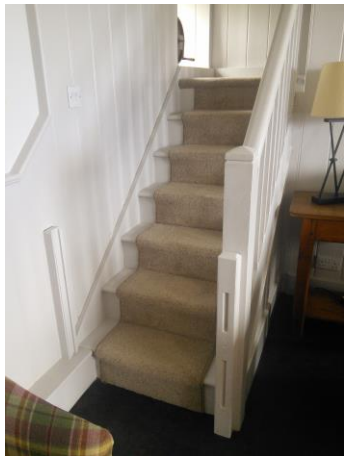
- Doyden Stable Cottage is situated above Doyden House and enjoys spectacular views of the Atlantic Ocean and of the Trust's intriguing, cliff-top folly, Doyden Castle.
- The layout is open plan on the ground floor with vinyl floor tiles and a rug in the sitting area.
- The cottage is heated by Air source central heating.
- There is also a wood burning stove in the sitting area.
- There is a telephone in the main hallway of Doyden House for emergency calls. Please note there is no mobile telephone signal.
- In the event of power failure emergency lighting is provided on the landing and in the sitting area by the front door. There is also emergency lighting in the hall and landing of Doyden House.
- The minimum internal door measurements are 670mm.
- The door from the boot room to the shower room/wet room has a clear opening width of 630mm.

The accommodation comprises the following:

Ground Floor:

- The front door opens into the open-plan kitchen/dining/sitting room.
- There is a door from the kitchen to the boot room.
- The boot room leads to the shower room/wet room.
- Generous sized kitchen area with dining table.

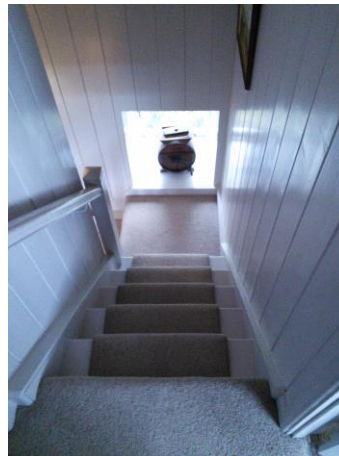
First Floor:



Bottom of stairs



Second tier of stairs



View looking downstairs

- One double bedroom with a divan-based bed which can be split into twins, upon request.
- One double bedroom with a feature, iron bedstead.
- There is a very small landing area between the two bedrooms.
- In both bedrooms the ceiling slopes either side of the windows which reduces head height.

Pre-Arrival

- See the main webpage for booking and location details.
- Please contact us prior to booking if you have any specific access requirements.
- Directions provided with booking.

Approach

- The cottage is approached via a drive of one mile along country lanes. The entrance gates to Doyden House are held open. A short drive along a track sweeps leads through stone pillars bearing left to Stable Cottage. Just past the outside sitting area and grassed area there is space for parking one car.



The entrance gates to Doyden House



The short track to Doyden House



Stable Cottage is on the left. Doyden House is on the right.

Arrival & Parking Facilities

- The car parking area is reasonably level.
- The key safe is on the wall to the right of the front door at a height of 1360mm. It is operated by a combination lock mechanism where the dials need to be turned to the cottage combination code. A torch is recommended, especially if arriving in the dark, as the numbers on the lock can be difficult to see.
- There is a movement detector light above the front door which helps illuminate the key safe but a torch may also be required.

Getting in (and out) of the cottage

- There is a step into the cottage which is 220mm high and a threshold with a height of 40mm.
- The main entrance door has a clear opening width of 1 metre.
- There is a small step measuring 60mm into the cottage.
- The light-switch is on the left-hand side as you enter cottage at a height of 1380mm.



Front door with key safe on the right



Step up into Stable Cottage

Getting around the cottage

- The carpeted staircase has 13 treads including the half landing, these are 190mm high. The handrails are on the right-hand side as you go up the stairs. These rails have a height of between 870mm to 960mm from each tread.
- The stairs are reasonably narrow with a half turn.
- There is minimum circulation space on the small landing area between the two bedrooms.
- A slot in stairgate is provided.

Ground Floor:

Sitting area

- The light-switch is on the left-hand side as you enter cottage at a height of 1380mm.
- Lighting provided by three, double wall lights and one table lamp.
- Two-seater sofa with seat height of 460mm and a back height of 530mm.
- Two armchairs one with seat height of 500mm and a back height of 600mm the other with a seat and back height of 450mm.
- Multi-fuel fire and radiator.
- Large, deep window with coastal views.
- 32" TV with integrated DVD.
- CD /radio.
- Stairs leading to first floor.



Kitchen

- The light-switch is on the left-hand side as you enter cottage at a height of 1380mm.
- Five recessed, LED ceiling spotlights, under cupboard lighting.
- Two pendant lights above dining area.
- Worktop is 900mm from floor level.
- Stainless steel kitchen sink with lever taps.
- Built-in, eye level cooker with separate grill controls at a height of 1570mm.

- Ceramic hob with controls to the right-hand side.
- Extraction with light above cooker.
- Microwave with controls at a height of 1700mm.
- Cordless kettle, toaster.
- Integrated fridge and separate freezer.
- Integrated washer-dryer.
- Integrated slim line dishwasher.
- Dining table with clear knee clearance of 600mm.
- Four wooden seated chairs with a seat height of 460mm and a back height of 430mm.
- Under stairs walk in cupboard with very limited head height and door with of 440mm.



Ground Floor Shower room/Wet room

- Main light switch is to the right of the shower/wet room door in the boot room at a height of 1300mm.
- LED recessed spotlights in ceiling.
- Level access to shower room/wet room which is fully tiled floor to ceiling.
- The floor tiles are anti-slip. A shower mat is not provided as not required on this surface
- Shower has a large, fixed head along with a shower head on a sliding rail.
- The shower controls are 1260mm from floor level which twist/turn to operate.
- The WC is 470mm high with push flush.
- The hand basin is 860mm high with crosshead taps.
- Mirror with light and shaver point.
- Heated, ladder towel rail.
- There is also radiator next to the WC.



Boot room leading to shower room/wet room



First Floor:

Double Bedroom

- Sea Views.
- The clear opening door width is 600mm.
- Main light switch is to the left of bedroom door at a height of 1350mm.
- 5' (1500mm) double feature iron bedstead with firm mattress.
- Bed has a clearance from floor level of 330mm.
- Bed is 2000mm and has a height of 730mm.
- Four drawer chest of drawers.
- Free-standing towel rail.
- Two bedside cabinets with bedside lamps.
- Small chair with a seat height of 500mm and a back height of 330mm.
- Double wall light.
- The wardrobe is small being built into the eaves.
- The height of the rail is 1370 mm from floor level.

- There are sloping eaves on both sides of the window reveal – mind your head!
- There is good circulation space around the bed.
- Wall mirror.



Built in wardrobe



Double Bedroom / Twin bedroom on request

- Sea views.
- The clear opening door width is 600mm.
- Main light switch is to the right of the bedroom door at a height of 1350mm.
- 6'/1800mm double bed which can be 2 x 3' twins on request.
- Bed is 1780mm long and has a height of 660mm with a firm mattress.
- There is no clearance below the bed to the floor.
- Four drawer chest with an integrated mirror.
- One wooden chair with a seat height of 430mm and a back height of 460mm.
- Free-standing towel rail.
- There are two bedside cabinets with bedside lamps and a double wall light.
- The wardrobe is small being built into the eaves.

National Trust

- The height of the rail is 1370mm from floor level.
- There are sloping eaves on both sides of the window reveal – mind your head!
- There is good circulation space around the bed, but low head room around the eaves area.



Bedroom as a double



Built in wardrobe



Bedroom as a double



Bedroom as a twin



Bedroom as a twin



Bedroom as a twin

Garden

- There is a grassed upper-level garden area with Directors chairs available to enjoy the views. These are kept in the cupboard under the stairs.
- There are five steps which are 200mm high to the upper garden and the garden is fenced. There are handrails on the right-hand side of the steps. The first handrail has a height of between 960mm-1080mm. Then as you reach the garden the top rail has a height of 1320mm. Small children would need to be watched as it is possible to fall under the fencing posts.
- Wooden table with a knee clearance 660mm of and four wooden garden chairs with arms. Seat height of 450mm and a back height of 550mm.
- Open aspect with no secure area.



Additional Information

- Assistance dogs are welcome at all our cottages.
- In the event of a fire, it is the responsibility of the guests to evacuate themselves. Vibrating fire/smoke detectors are available if requested at time of booking. Please contact us if you have any other specific access requirements in this respect.
- Carpets are 80/20 wool/manufactured fibres.
- Duvets and pillows are made of hollowfibre.
- Cushions are hollowfibre.

Facilities at all cottages

In addition to the standard equipment and facilities, each cottage is equipped with the following:

- Chair with arm rests in sitting area.
- Good reading light.
- Non-slip mat for shower.
- Information in alternative formats (on request)

We aim to provide these items in all cottages but please check when booking as to their availability and to check if new items have been added to the list.

In Stable Cottage, please pre-request a large handle vegetable peeler and an easy jar opener.

Specialist equipment

Other specialist equipment such as wheelchairs, bath seats, toilet frames etc may be available for loan or purchase from the local Red Cross loan centre. Please check this out before booking the Cottage and contact us if you require further information.

<https://www.redcross.org.uk/get-help/borrow-a-wheelchair>

<https://www.redcross.org.uk/get-help/hire-a-toilet-aid>

Future Plans to improve Access to National Trust Holiday Cottages

- We are currently in the process of writing accessibility guides for all our holiday cottages and improving access over time for all our guests. All feedback is very helpful in informing us of ways in which we can improve access to all our cottages. We welcome any comments or ideas from you about access at this cottage and thank you for taking the time to do this. Please do this in the most convenient way for you. See contact details below or information on website.

About the Accessibility Guide

- This Accessibility Guide is intended to provide key information about the cottage that may be particularly relevant to guests with disabilities. Please contact us prior to booking if you would like information that is more specific and we will be happy to oblige.

Email: holiday.enquiries@nationaltrust.org.uk

Phone: 0344 800 2070

Access for All at the National Trust

- The Access for All office works to improve access at all National Trust cottages and properties. The office welcomes comments and ideas on improving access.

Phone: 01793 818531

Email: accessforall@nationaltrust.org.uk

August 2022