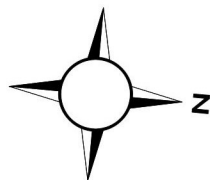
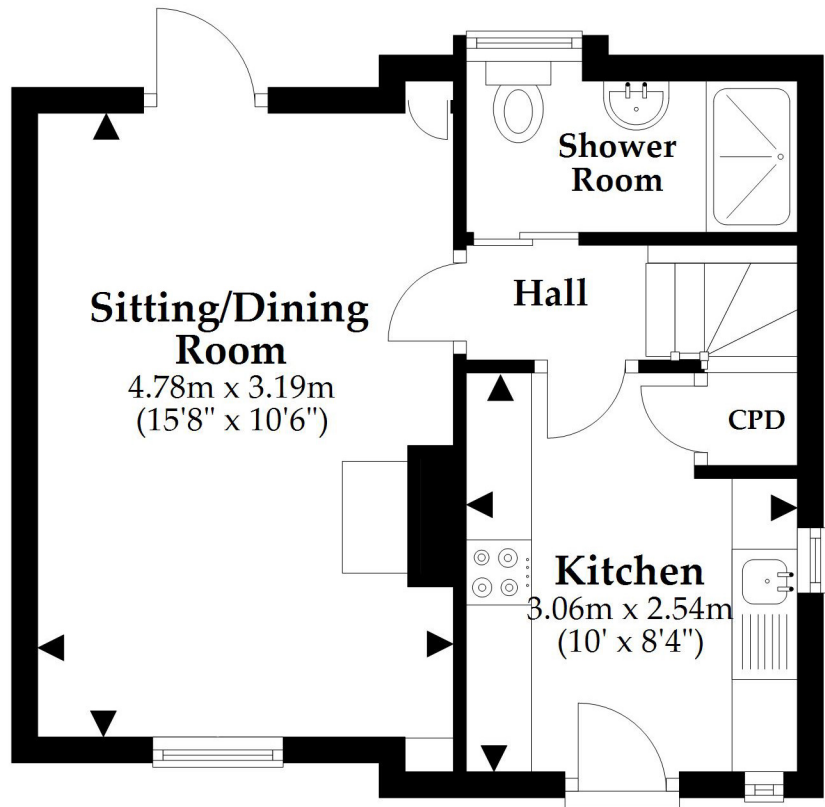


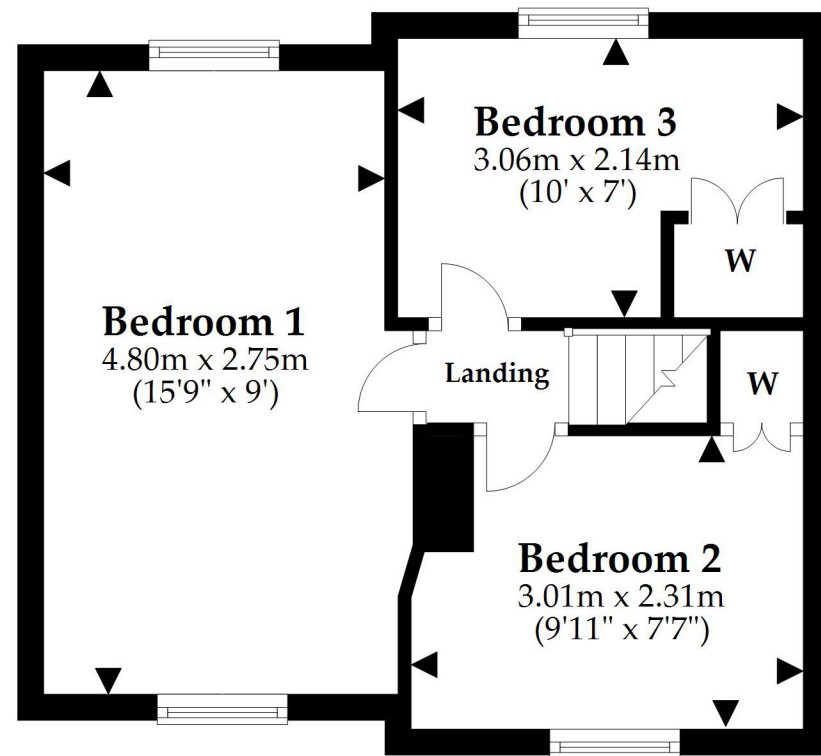
Ground Floor

Approx. 29.6 sq. metres (318.5 sq. feet)



First Floor

Approx. 29.4 sq. metres (316.4 sq. feet)



Total area: approx. 59.0 sq. metres (634.9 sq. feet)

This plan is not to scale and it is for general guidance only. LJT Surveying Ltd Ringwood