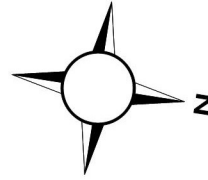
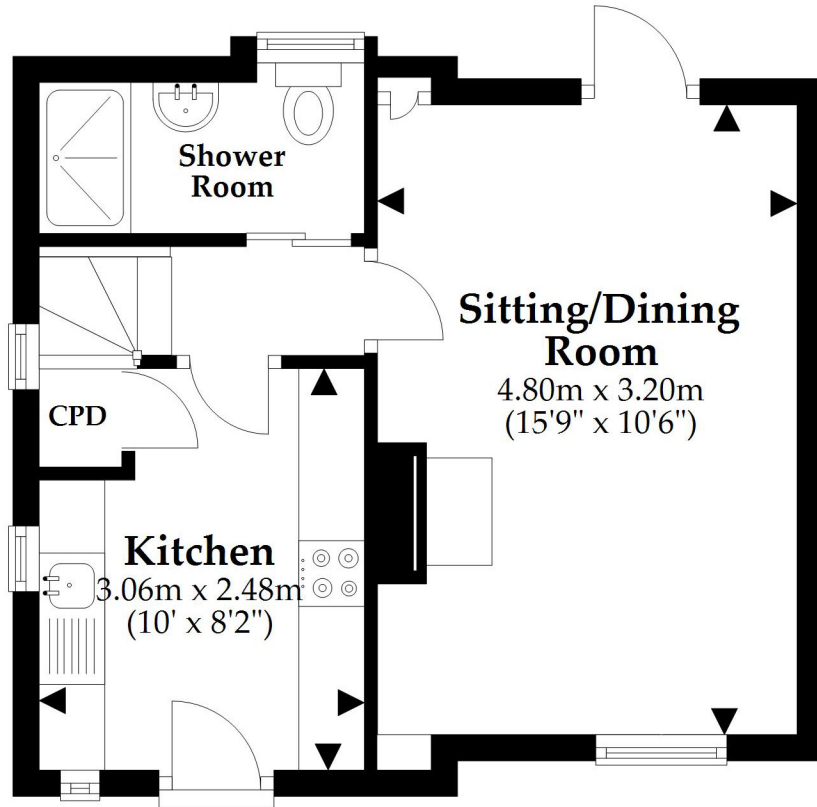


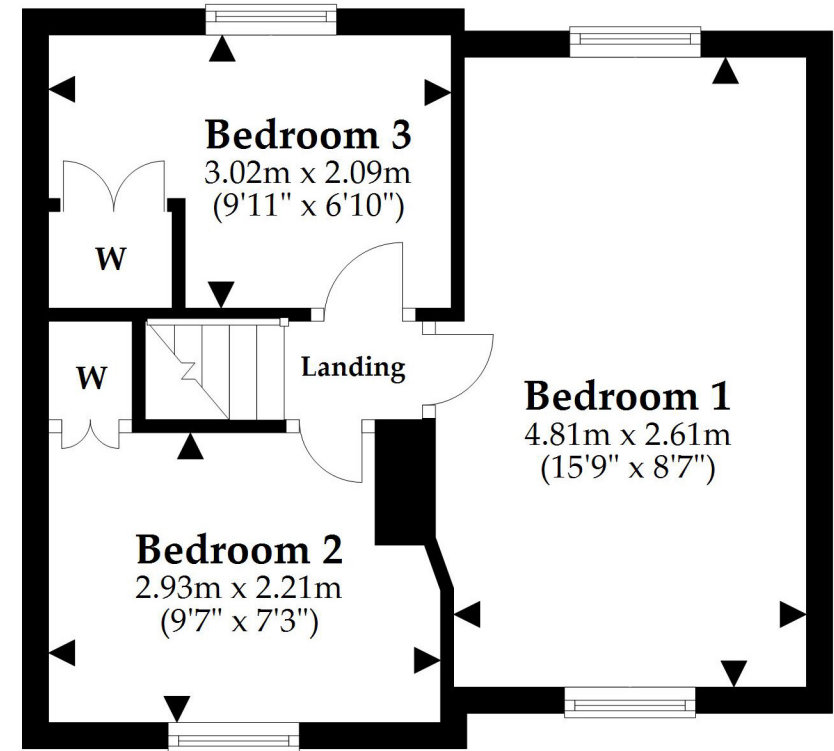
Ground Floor

Approx. 29.0 sq. metres (312.1 sq. feet)



First Floor

Approx. 29.1 sq. metres (312.8 sq. feet)



Total area: approx. 58.1 sq. metres (624.9 sq. feet)

This plan is not to scale and it is for general guidance only. LJT Surveying Ltd Ringwood