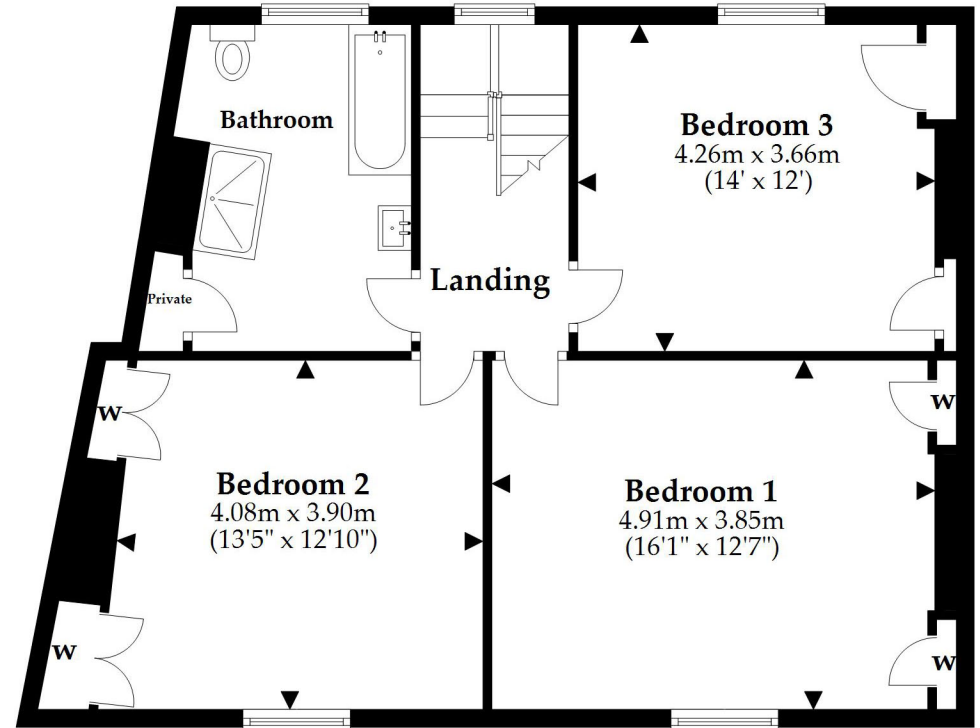


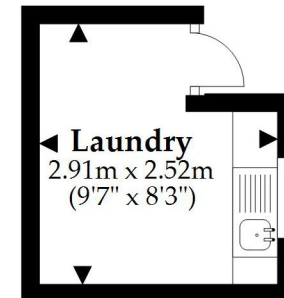
First Floor

Approx. 71.6 sq. metres (770.2 sq. feet)



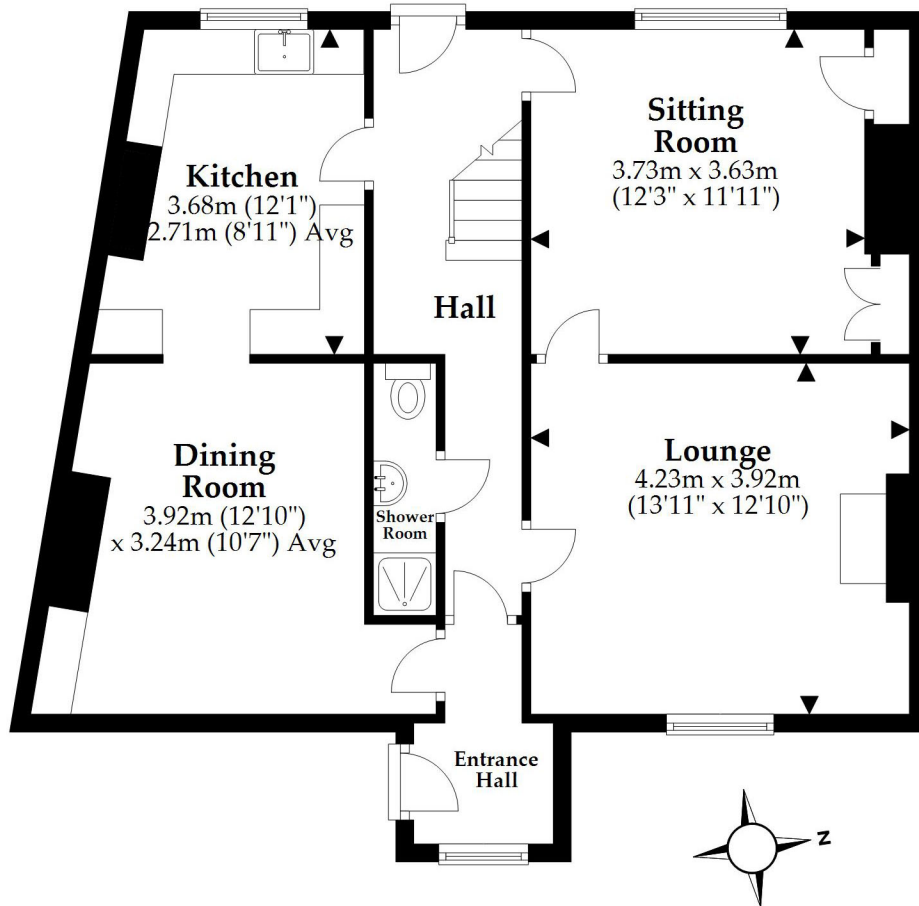
Laundry

Approx. 6.5 sq. metres (70.4 sq. feet)



Ground Floor

Approx. 72.5 sq. metres (780.8 sq. feet)



Total area: approx. 150.6 sq. metres (1621.5 sq. feet)

This plan is not to scale and it is for general guidance only. LJT Surveying Ltd Ringwood