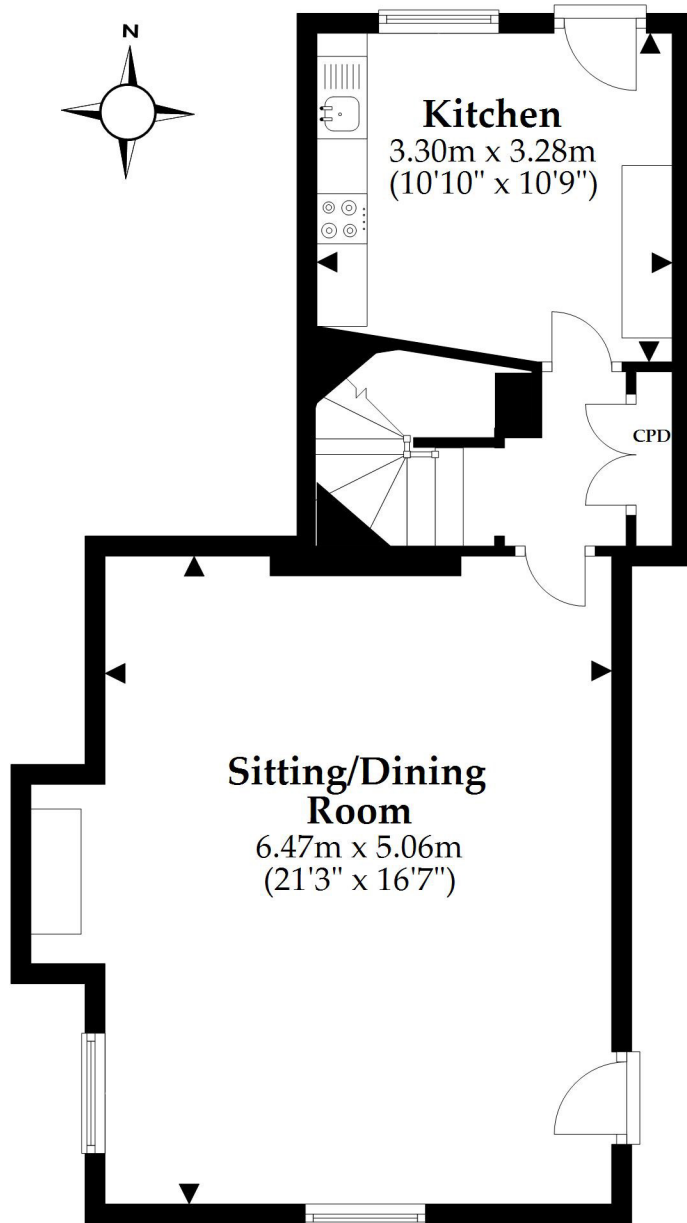


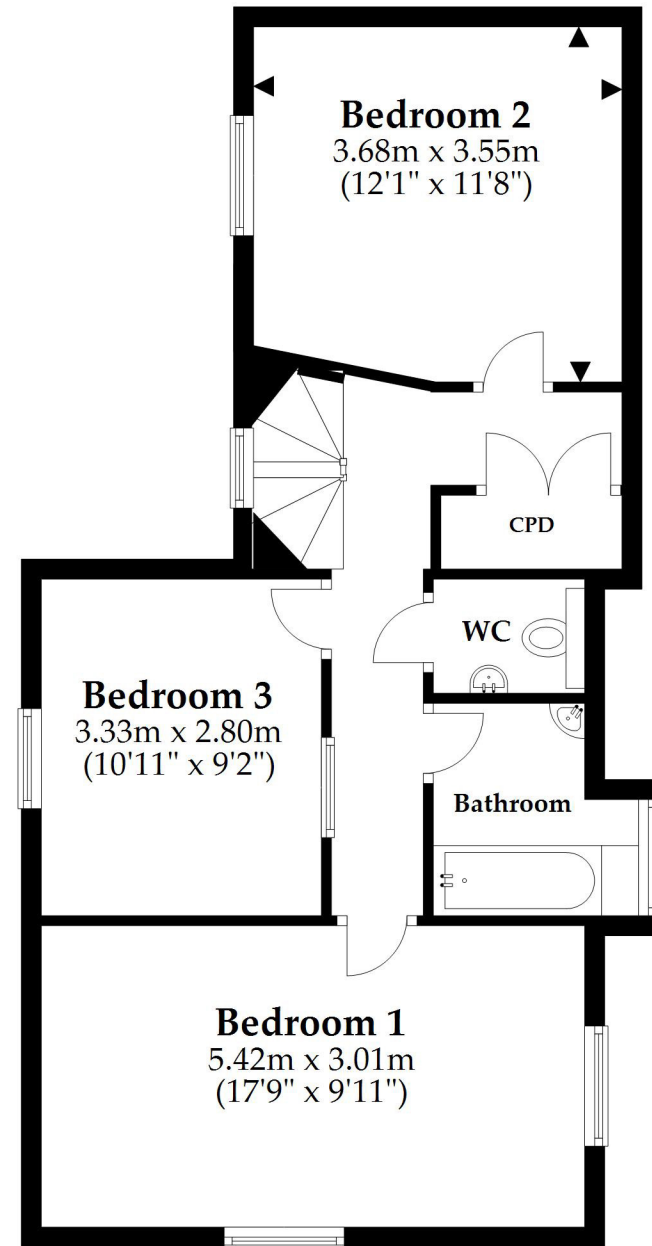
Ground Floor

Approx. 52.5 sq. metres (565.3 sq. feet)



First Floor

Approx. 55.9 sq. metres (601.3 sq. feet)



Total area: approx. 108.4 sq. metres (1166.6 sq. feet)

This plan is not to scale and it is for general guidance only. LJT Surveying Ltd Ringwood