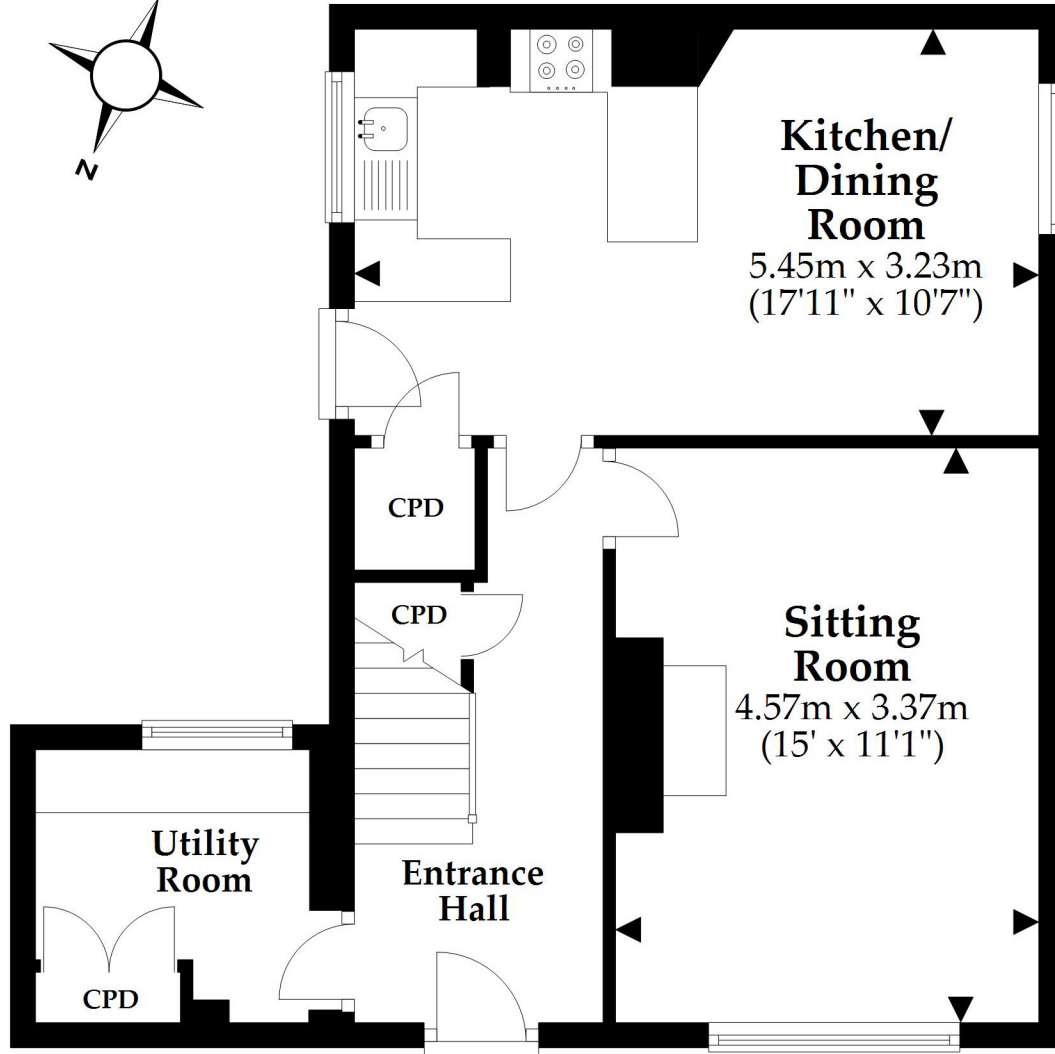
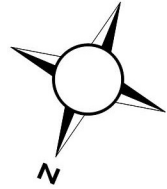


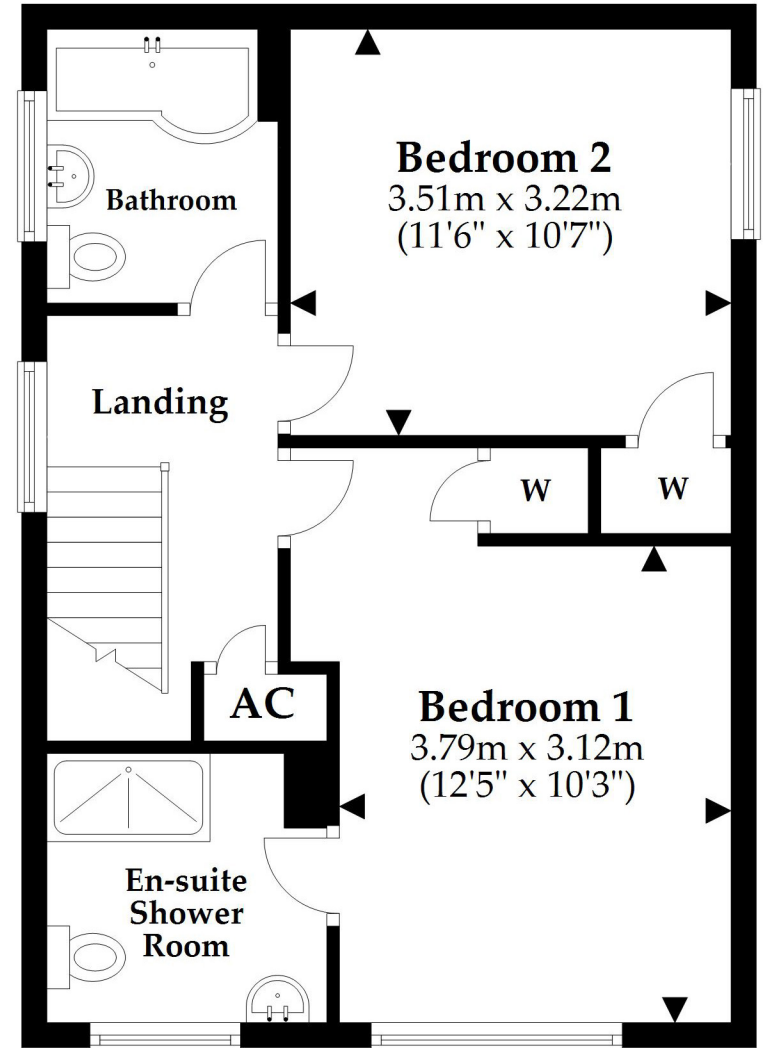
# Ground Floor

Approx. 48.6 sq. metres (522.8 sq. feet)



# First Floor

Approx. 43.3 sq. metres (466.1 sq. feet)



Total area: approx. 91.9 sq. metres (988.8 sq. feet)

This plan is not to scale and it is for general guidance only. LJT Surveying Ltd Ringwood