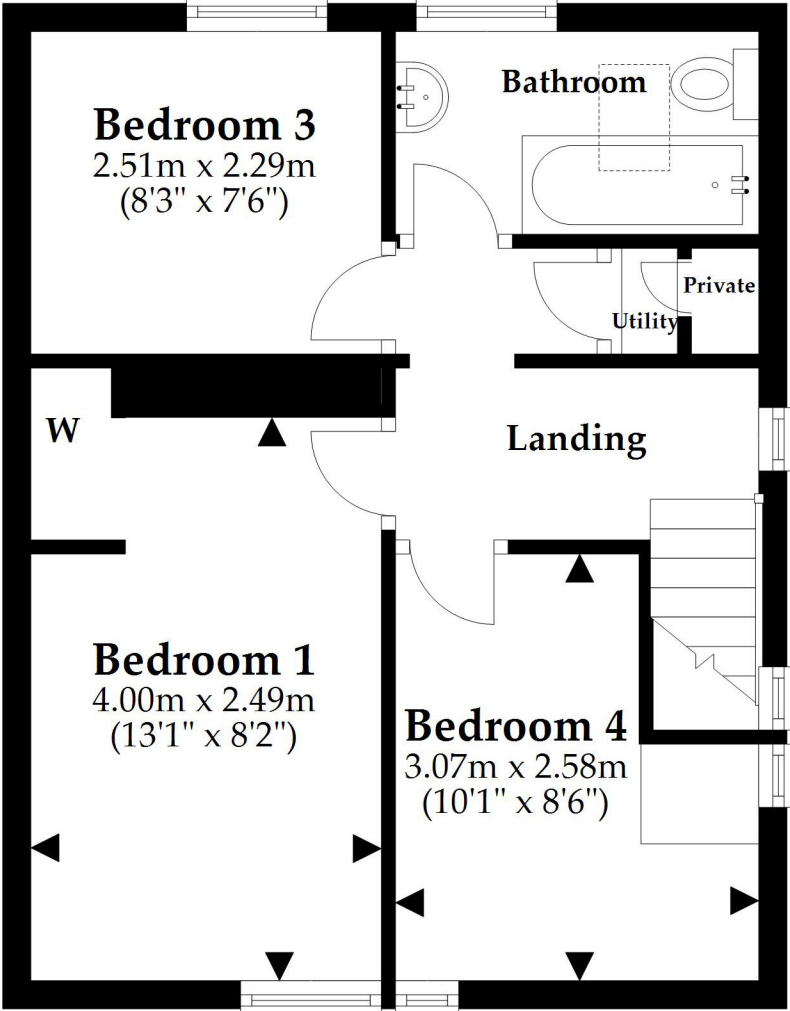


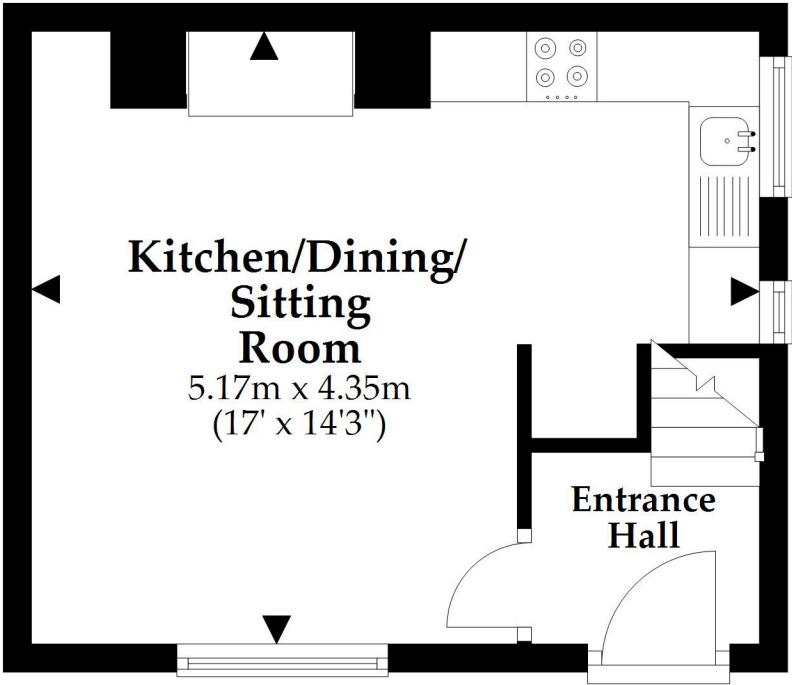
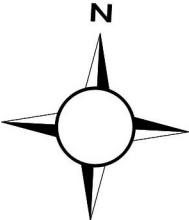
First Floor

Approx. 35.1 sq. metres (378.2 sq. feet)



Ground Floor

Approx. 22.5 sq. metres (242.1 sq. feet)



Total area: approx. 57.6 sq. metres (620.2 sq. feet)

This plan is not to scale and it is for general guidance only. LJT Surveying Ltd Ringwood