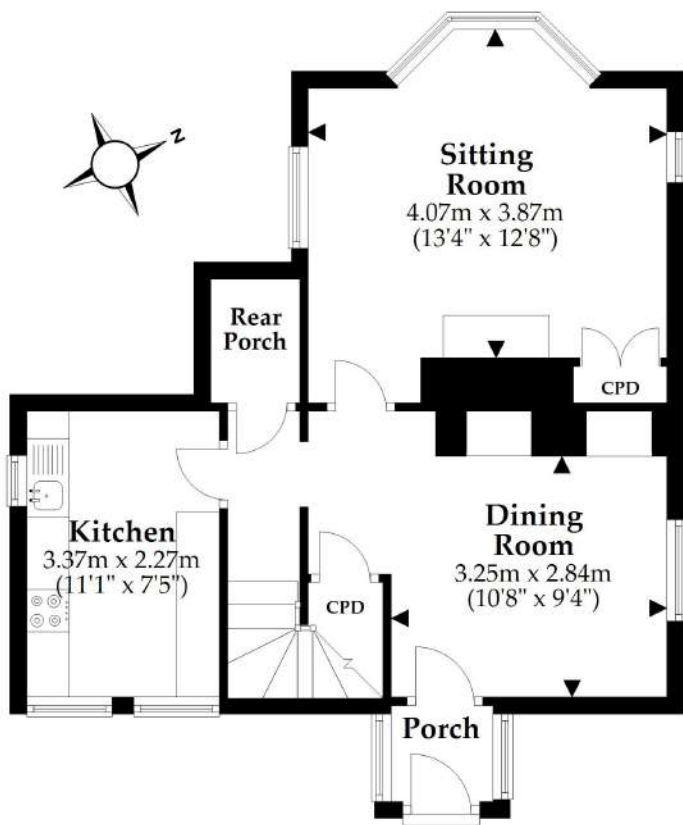


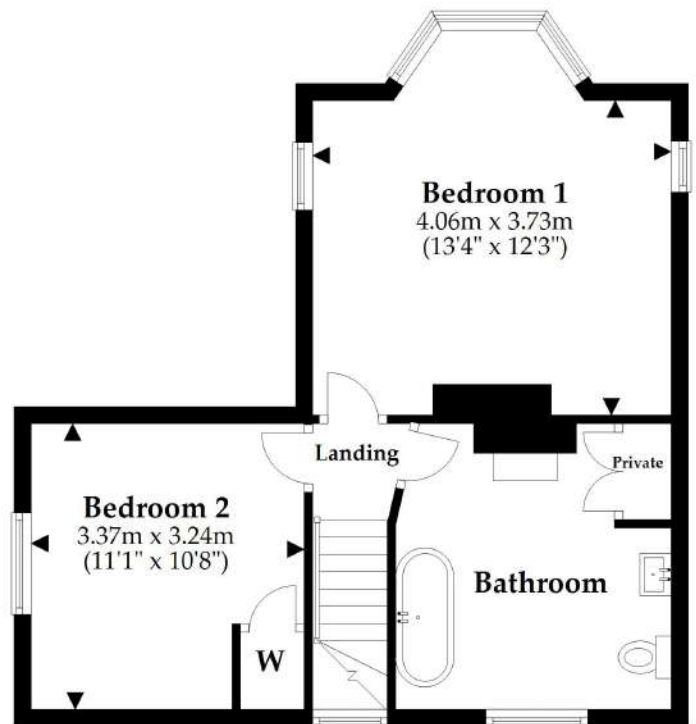
## Ground Floor

Approx. 44.9 sq. metres (482.8 sq. feet)



## First Floor

Approx. 43.0 sq. metres (462.6 sq. feet)



Total area: approx. 87.8 sq. metres (945.4 sq. feet)

This plan is not to scale and it is for general guidance only. LJT Surveying Ltd Ringwood