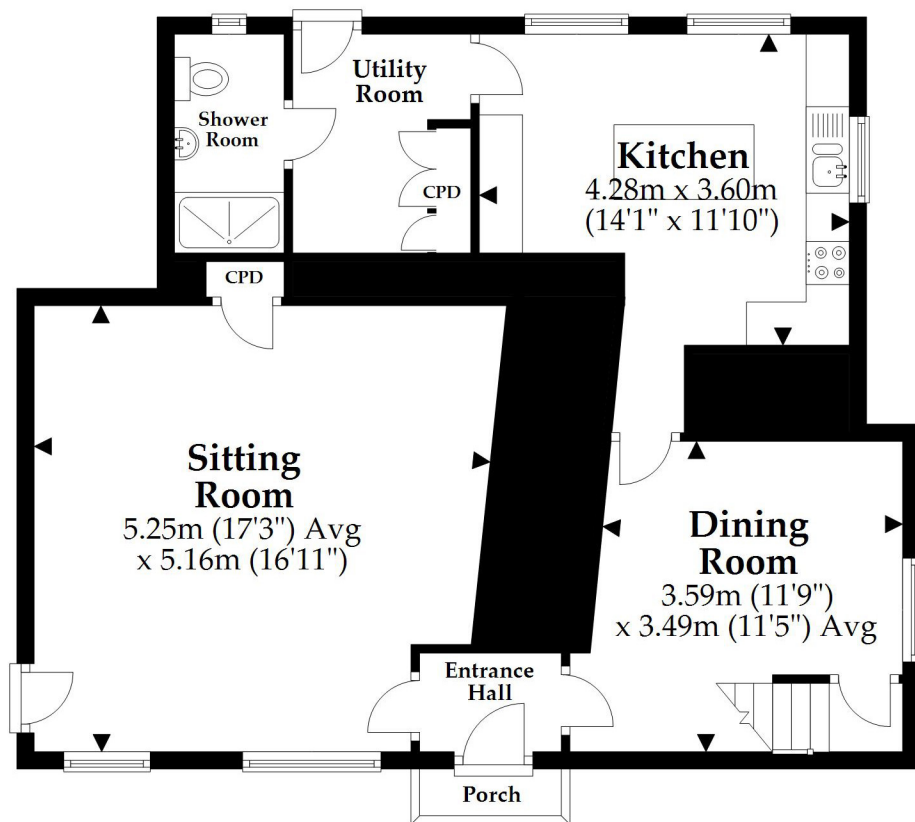


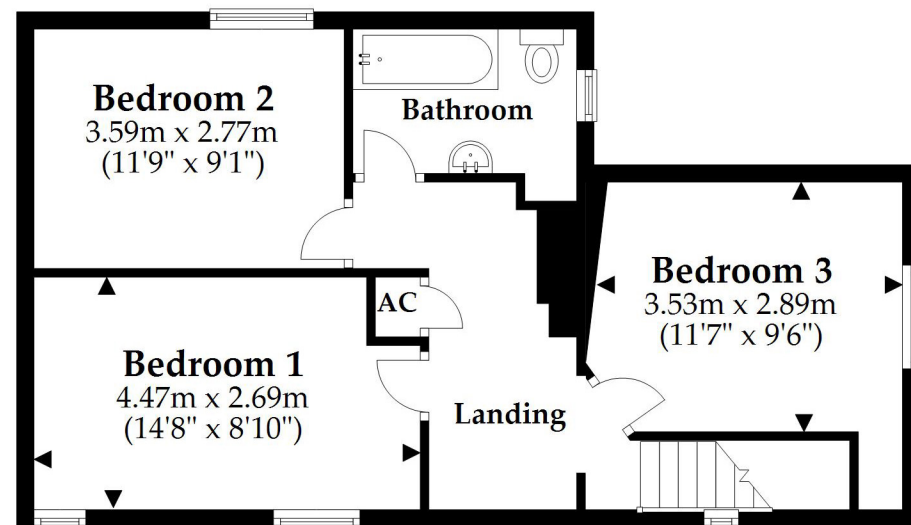
Ground Floor

Approx. 75.6 sq. metres (813.2 sq. feet)



First Floor

Approx. 49.2 sq. metres (529.6 sq. feet)



Total area: approx. 124.8 sq. metres (1342.9 sq. feet)

This plan is not to scale and it is for general guidance only. LJT Surveying Ltd Ringwood