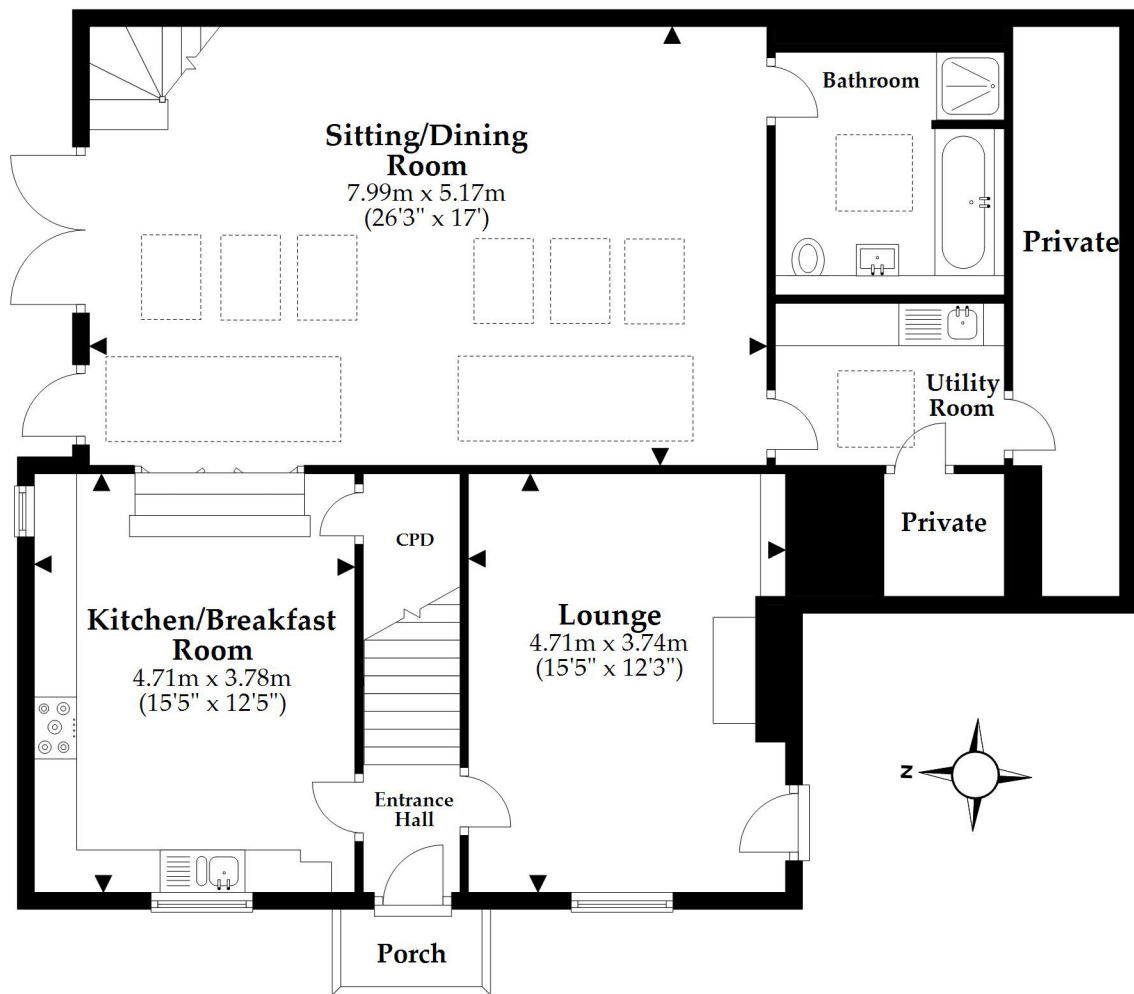


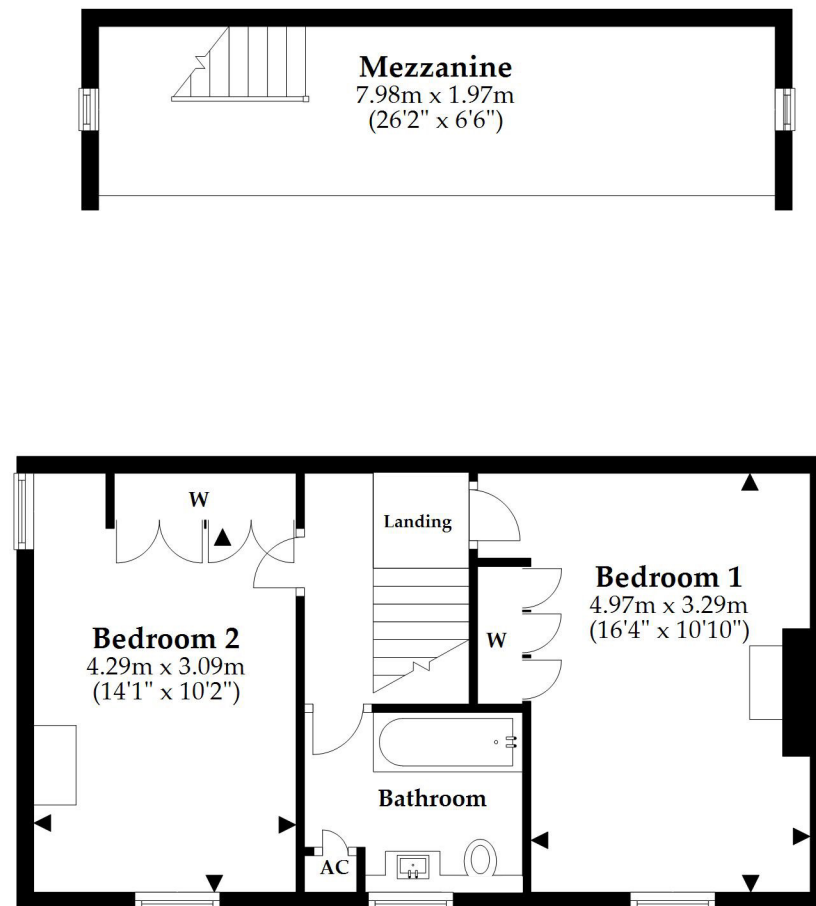
Ground Floor

Approx. 112.1 sq. metres (1206.8 sq. feet)



First Floor

Approx. 61.0 sq. metres (657.0 sq. feet)



Total area: approx. 173.2 sq. metres (1863.8 sq. feet)

This plan is not to scale and it is for general guidance only. LJT Surveying Ltd Ringwood