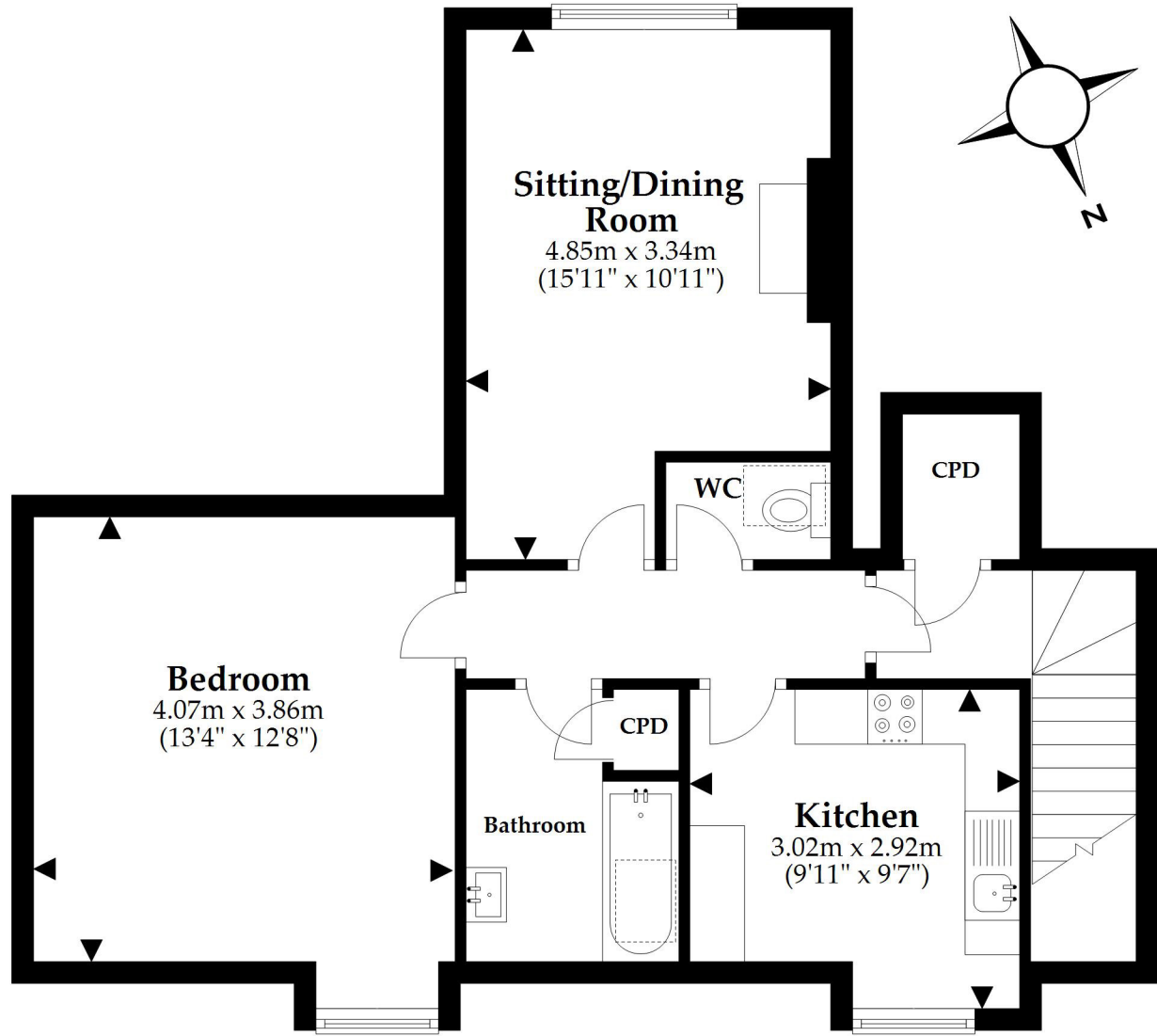


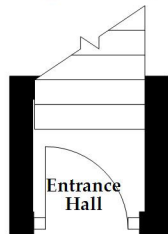
First Floor

Approx. 57.2 sq. metres (615.5 sq. feet)



Ground Floor

Approx. 0.9 sq. metres (10.1 sq. feet)



Total area: approx. 58.1 sq. metres (625.6 sq. feet)

This plan is not to scale and it is for general guidance only. LJT Surveying Ltd Ringwood