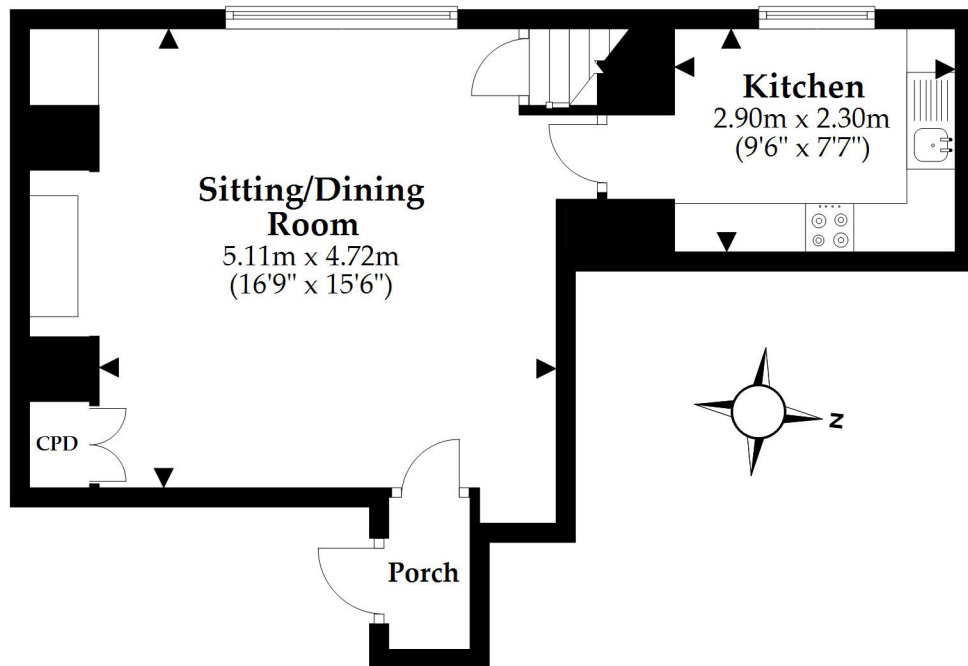


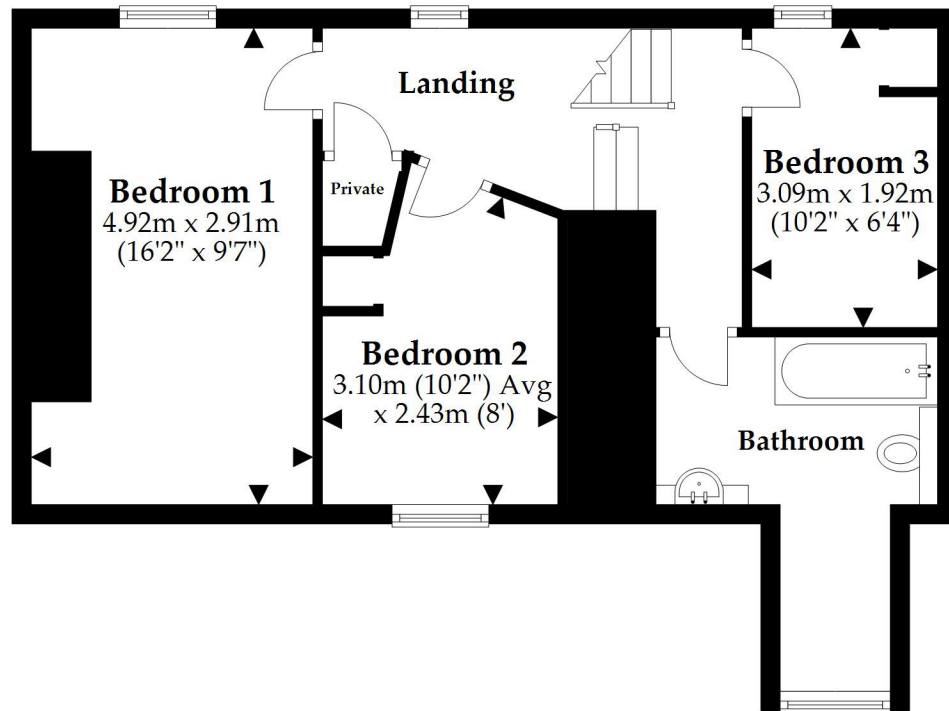
Ground Floor

Approx. 37.1 sq. metres (399.2 sq. feet)



First Floor

Approx. 48.0 sq. metres (517.1 sq. feet)



Total area: approx. 85.1 sq. metres (916.2 sq. feet)

This plan is not to scale and it is for general guidance only. LJT Surveying Ltd Ringwood