

National Trust

National Trust Cottages Accessibility Guide

Ferry Cottage
Greenway



Property Ref: 012046

Introduction

The property is a water front property located next to a small quay with views over the River Dart. It is traditional on the outside and modern and spacious on the inside.

The property is arranged over two floors and sleeps up to 4 people in 2 bedrooms. There is a separate ground floor bathroom with shower and first floor bathroom with shower over the bath.

The property has good circulation and high ceilings and have good light levels. There are additional steps down to the kitchen area from the living room.

The property has gas central heating.

The Cottage is arranged as follows:

Ground floor:

Large living area with mezzanine level, open plan kitchen with dining table, sitting room, large bathroom and shower room, utility room

First floor:

Two double bedrooms (1 x 6' double bed which can be a twin on request and 1 x 5' double bed), family bathroom with shower over the bath

Pre-Arrival

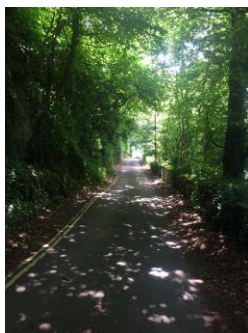
- See the main webpage for booking and location details.
- Please contact us prior to booking if you have any specific access requirements.
- Directions provided with booking

Approach

The property is approached and signposted off a main road via well maintained undulating and winding country lanes. The lanes can be bounded by hedgerows and hidden vegetation-covered stone walls. The lanes can be narrow but there are plenty of passing spaces. The property can also be approached by foot with the coastal footpath nearby. The final stretch of lane approaching the property is relatively steep.

Arrival & Parking Facilities

- There is off road tarmacked parking for two cars directly by the entrance door
- There is outside lighting by the entrance but if arriving after dark it is advisable to have a torch



Getting in (and out) of the cottage

- There is a dial combination key box located by the entrance door at a height of 1100mm
- Door width 760mm
- One step up, height 130mm, tread 600mm
- Opens into the open plan living area, sunken doormat and wooden floorboards
- There is a side gate over cobbles and then gravel, gate width 980mm. Leads to the original front door, width 950mm. There are 4 steps up to the door, step heights 140mm, uneven treads of 250mm to 300mm.
- There is a further side door from the sitting room width 850mm , step height 140mm



Getting around the cottage

Ground floor:

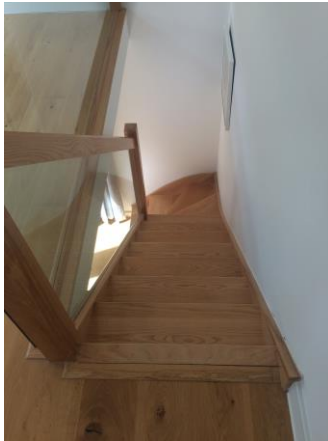
- 4 x wide feature steps between the living area and the kitchen, step height 180mm, tread 250mm

Mezzanine:

- Wooden stairs to the mezzanine area wooden floorboards with a rug with 2 beanbags.
- Stairs have quarter turn angular winders at the bottom. Step height 210mm, tread 280mm, width 680mm

First floor:

- Hall between kitchen and sitting room 1080mm by 2000mm. Access to front door and bottom of the stairs to the first floor
- Carpeted straight stairs with a step height 210mm, tread 260mm, width 1000mm, handrail
Small landing area 1000mm by 900mm, with a final half-turn step, height 180mm
- Restricted head height near the bottom of the stairs of 1700mm
- Main landing width 750mm, continuation of carpet, pendant light



Open plan living area

- Level and even wooden floor with a rug
- 2 x 2 seater settees with a seat height of 440mm
- Double height ceiling with skylights and sunken ceiling spotlights
- 2 x table lamps with on/off switches on the cables
- Table height 760mm, clearance underneath 630mm
- 4 x wooden dining chairs, seat height 470mm
- Good circulation



Kitchen/diner

- Wooden bi-fold doors and steps down to kitchen area, step height 180mm, tread 250mm
- Continuation of wooden floorboards
- Height of worktop 900mm
- Fitted kitchen with electric double oven and ceramic hob, fridge/freezer, dishwasher, microwave
- Sink, mixer lever taps with ceramic washers
- Kitchen table, height 770mm, space underneath 650mm
- 4 x wipe-able plastic chairs, seat height 430mm
- Sunken ceiling spotlights
- Windows over front garden to the quay and river



Utility room

- Door off the living area, width 780mm, level threshold
- Floor tiles
- Separate washing machine and tumble dryer
- Sink with mixer lever taps with ceramic washers
- Skylight
- Circulation width of 1100mm
- Worktop height 890mm
- 2 x rows of coat hooks, height 1000mm and 1550mm



Bathroom (ground floor)

- Door off the living area, width 780mm, no threshold
- Tiled floor
- Toilet, sink and bath with separate electric shower
- Toilet height is 420mm with push flush on the wall
- Bath height 540mm with lever taps with ceramic washers and hand held pull out shower attachment
- Sink height 800mm, twist taps with washers
- Skylight and sunken ceiling spotlights
- Separate shower, 760mm by 760mm, step up 220mm. Pivot door with entrance width 570mm, shower controls at a height of 1400mm
- Good circulation



Sitting room

- Door width 730mm
- Wooden floor, level threshold, rug
- Coal effect electric open fire
- 2 x 2 seater settees with a seat height of 380mm
- Window with views over the front garden to the quay and river
- Sunken spotlights in the ceiling, 1 x table lamp with under lampshade on/off switches, 1 x table lamp with on/off switch on the cable
- Half glazed external door to the garden, width 850mm
- Good circulation



First floor:

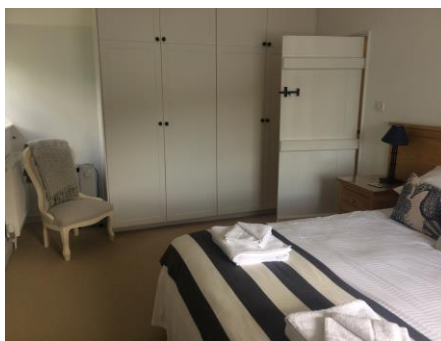
Double bedroom

- Door width, 810mm, step up 180mm, Suffolk latch
- Continuation of stair carpet
- Double bed width 1500mm, length 2000mm, height 600mm, clearance underneath 230mm
- 2 x side tables, 3 x table lamps on/off switches on the cable
- Ceiling pendant light
- Window with views over quay to river
- Fitted wardrobe, dressing table, height 730mm, clearance underneath 670mm, with stool, seat height 450mm
- Good circulation



Twin/double bedroom

- Door width 730mm, level threshold, Suffolk latch
- Carpet
- Twin zip and link divan beds 900mm width, 1900mm length, 600mm height,
- 2 x bedside tables and table lamps with on/off switches on the cable, pendant light
- Dual aspect windows with views over the front garden, quay and river, and across to woodland and up the lane
- Fitted wardrobe
- Chair, seat height 360mm
- Good circulation, 1000mm at the end of the bed



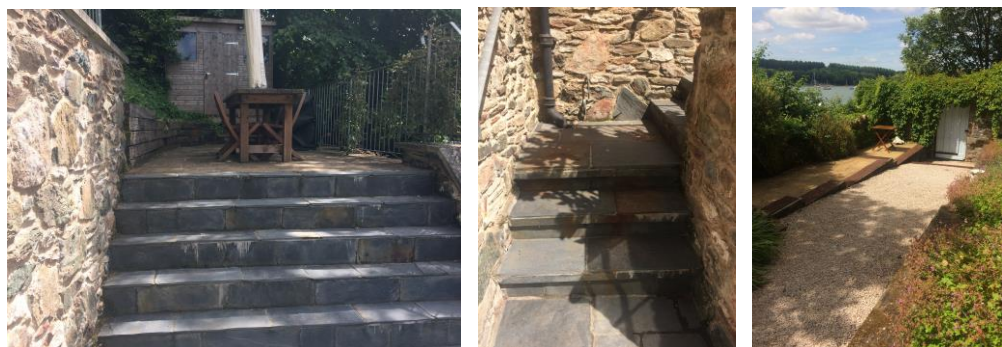
Bathroom

- Door width 690mm, height 1800mm, level threshold
- Tiled floor
- Fitted toilet and sink, bath with shower over
- Toilet height is 420mm with push flush
- Bath height 530mm, twist taps with washers
- Shower over the bath, controls at a height of 1200mm, bi-fold screen
- Sink height 880mm, twist taps with washers
- Shaver socket 1100mm, magnifying mirror
- Ceiling light
- Circulation around the bath, width from bath to sink 800mm
- Window over the front garden, quay and river
- Part sloping ceiling but not restrictive



Garden

- Main access to the garden is via the original front door, or the side door from the sitting room
- Access is also available via a front gate
- Enclosed rear garden with paved steps and a number of raised terraces, lower gravel path
- The main seating area is via steep quarter turn steps with handrails, step heights approximately 180mm, treads 260mm
- Additional fold up chairs in the porch for use on the lower garden level



Additional Information

- Assistance dogs are welcome at all our cottages
- In the event of a fire, it is the responsibility of the guests to evacuate themselves. Vibrating fire/smoke detectors are available if requested at time of booking. Please contact us if you have any other specific access requirements in this respect.

Facilities at all cottages

The National Trust aims to expand the list of accessible /equipment/items available at each cottage and these may include

- Cordless kettle
- Hollowfibre bedding
- Chair with armrests
- Good reading light
- Large handle vegetable peeler
- Easy tin opener
- Non-slip mat for bath/shower
- Non-slip place mat
- Easy jar opener
- Information in alternative formats (on request)

Please note that we cannot guarantee that all items will be available at the time of your visit. Please enquire at the time of booking regarding any particular requests.

Specialist equipment

Other specialist equipment such as wheelchairs, bath seats, toilet frames etc may be available for loan or purchase from the local Red Cross loan centre. Please check this out before booking the Cottage and contact us if you require further information.

<http://www.redcross.org.uk/standard.asp?id=89425>

Future Plans to improve Accessibility to National Trust Holiday Cottages

We are currently in the process of writing accessibility guides for all our holiday cottages and improving access over time for all our guests. All feedback is very helpful in informing us of ways in which we can improve access to all our cottages. We welcome any comments or ideas from you about access at this cottage and thank you for taking the time to do this. Please do this in the most convenient way for you. See contact details below or information on website.

About the Accessibility Guide

This Accessibility Guide is intended to provide key information about the cottage that may be particularly relevant to guests with disabilities. It is reviewed annually. Please contact us prior to booking if you would like more detailed information and we will be happy to oblige.

Phone: 0344 800 2070

Email: cottages@nationaltrust.org.uk

Access for All at the National Trust

We continue to work to improve accessibility at all our holiday cottages. We welcome comments and ideas on improving access.

Phone: 0844 800 2070

Email: cottages@nationaltrust.org.uk

Date 21 June 2018