

National Trust

Cottages Accessibility Guide

Gwendra Wartha
Gwendra
Veryan
TR2 5PF
Ref: 011081



Introduction

- Gwendra Wartha is a two storey cottage located above Pendower beach.
- Gwendra Wartha is one of 5 National Trust holiday cottages at Gwendra.
- Many of the rooms face have sea views.
- The cottage has night storage heating, an open fire, Rointe heaters and convactor heaters.
- The sitting room and kitchen are on the first floor with lovely sea views.
- The land immediately around the cottage is flat, however the Gwendra site and access to the beach is hilly.
- There are shared laundry facilities in an outbuilding next to Mowhay cottage.

The Cottage is arranged as follows:

The bedrooms and bathroom are on the ground floor. The sitting room and kitchen are on the first floor.

Pre-Arrival

- See the main webpage for booking and location details.
- Please contact us prior to booking if you have any specific access requirements.
- Directions provided with booking.
- Please bring a torch.

Approach

- The cottage is approached via country lanes and sign posted Veryan followed by Nare Hotel.

Arrival & Parking Facilities

- The site is accessed by a fairly steep downward-facing concrete and grass track with speed bumps.
- Parking is in a designated space in the carport at the bottom of the driveway which is shared with Dairy cottage and Mowhay.
- The width of this space is 2.2m, length is 5m and the height is 1.9m. Care should be taken when moving around the car port as there are low beams at a height of 1.7m.
- The distance from the carport to the cottage is approximately 25m of which 15m is on the firm gravel steeply sloping driveway.
- There is space directly outside the cottage gate to unload a car.
- The carport has a level concrete surface.
- The path leading to the cottage from the driveway is approximately 10m. It is a level slate and gravel stepping stone path.
- The key safe is on the left hand side of the door at a height of 142cm ffl (from floor level). It is operated by a combination lock mechanism.
- There is an outside light over entrance.





Getting in (and out) of the cottage

- The main door has a clear opening width of 74cm.
- There is a 2cm step from the gravel to a slate base.
- Then there are two stone steps, each 15cm high and a 2cm high metal threshold into the cottage.
- The door leads directly into the porch.



Getting around the cottage

- There is a vinyl floor covering in the kitchen, bathroom and porch.
- There is a stone floor in the hall.
- There is carpet in the bedrooms, landing and stairs.
- Internal doors clear opening widths range from 66cm to 78cm.
- There are 12 stairs leading to the first floor with a wooden hand rail.

Ground Floor

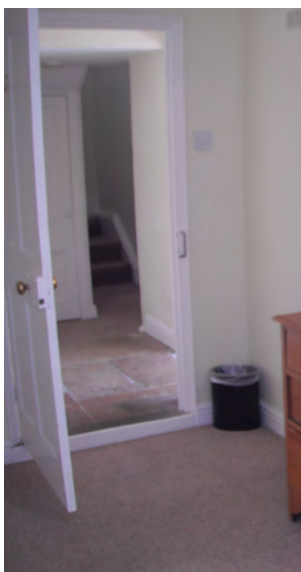
Hall

- Door from porch leads into the hall.
- There is an 8 cm step into the double bedroom and a further 10cm in the hall.
- Doors to bathroom and bedrooms.
- There is a chair in the porch with a seat height of 45cm.

Step into hall



Hall with wi-fi cabinet



Step into Double Bedroom

Double Bedroom

- The double bedroom is off the hall.
- There is a centralised double bed 153cm wide x 190cm long x 80cm high.
- There are two bedside cabinets 74cm high with table lamps.
- There is a chest of drawers 87cm high
- There is a wardrobe with a clothes rail at 153cm ffl.
- There is also a central ceiling light.
- There are windows to the front and side with garden and sea views.
- There is a chair with a seat height of 42cm.





Shower room

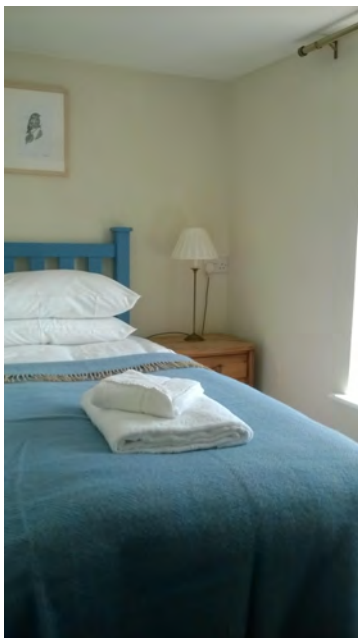
- The shower room is off the hall.
- The shower cubicle is 62cm x 140cm wide
- The basin is 84cm high.
- The WC is 44cm high.
- There are 4 ceiling spot lights and a mirror with integrated shaver point and a light.
- There is a heated towel rail.
- The ceiling height is 192cm high.





Single Bedroom

- There is a small single bedroom off the hall next to the bathroom.
- There is a single bed 90cm wide x 190cm long x 60cm high.
- The clearance underneath the bed is 17cm.
- There is a bedside table which is 55cm high with a table lamp.
- There is also a central ceiling light.
- There is a wardrobe with a clothes rail at 153cm ffl.
- There are views over the garden and sea.



First Floor

Sitting Room

- The sitting room is approached from the landing.
- There is a 15cm step from the landing into the sitting room.
- There are windows to the front and side with sea views and garden views.
- There is a central light fitting, table lamp and standard lamp.
- There is an open fire.
- There are 2 sofas with seat heights of 50cm. Both have cushions.
- There is a padded footstool at a height of 39cm.
- There is a coffee table at a height of 48cm.
- There is an occasional table at a height of 75cm.
- There is a TV and DVD player.
- There is a radio.



Kitchen/Diner

- Directly off the landing.
- The height of the worktop is 92cm.
- There is an electric cooker with ceramic hob with controls to front which is 93cm high.
- There is a fridge freezer, dishwasher, microwave, cordless kettle and toaster.
- There are two ceiling lights, internal and under cupboard lighting.
- There is a dining table and three chairs.
- The table has knee clearance of 59cm. The dining chairs are 46cm high.
- There are sea views.





Laundry Room

There is a washing machine and tumble dryer in an out building which is 15m from the carport along the gravel path and driveway. There are 2 stone steps each 16cm high and a 5cm threshold into this room.



National Trust

Garden

- The garden is flat and enclosed.
- There are sea views from the garden.
- There is a firm level flagged patio area with a table with fixed bench seating.
- There is also a grassed area with shrubs.
- There is a washing line.





Additional Information

- Assistance dogs are welcome at all our cottages
- In the event of a fire, it is the responsibility of the guests to evacuate themselves. Vibrating fire/smoke detectors are available if requested at time of booking. Please contact us if you have any other specific access requirements in this respect.

Facilities at all cottages

The National Trust aims to expand the list of accessible /equipment/items available at each cottage and these may include

- Cordless kettle
- Hollowfibre bedding
- Chair with armrests
- Good reading light
- Large handle vegetable peeler
- Easy tin opener
- Non-slip mat for bath/shower
- Non-slip place mat
- Easy jar opener



- Information in alternative formats (on request)

Please note that we cannot guarantee that all items will be available at the time of your visit. Please enquire at the time of booking regarding any particular requests.

Specialist equipment

Other specialist equipment such as wheelchairs, bath seats, toilet frames etc may be available for loan or purchase from the local Red Cross loan centre. Please check this out before booking the Cottage and contact us if you require further information.

<http://www.redcross.org.uk/standard.asp?id=89425>

Future Plans to improve Access to NT Holiday Cottages

- We are currently in the process of writing Accessibility Guides for all our holiday cottages and improving access over time for all our guests. All feedback is very helpful in informing us of ways in which we can improve access to all our cottages. We welcome any comments or ideas from you about access at this cottage and thank you for taking the time to do this. Please do this in the most convenient way for you. See contact details below or information on website.

About the Accessibility Guide

- This Accessibility Guide is intended to provide key information about the cottage that may be particularly relevant to guests with disabilities. Please contact us prior to booking if you would like information that is more specific and we will be happy to oblige.

Email: cottages@nationaltrust.org.uk

Phone: 0344 8002070

Access for All at the National Trust

- The Access for All office works to improve access at all National Trust cottages and properties. The office welcomes comments and ideas on improving access.

Phone: 01793 818531

Email: accessforall@nationaltrust.org.uk

Date: March 2022