

## National Trust Cottages Accessibility Guide

Hayloft  
Gwendra  
Veryan  
TR2 5PF

Ref: 011082



### Introduction

- Hayloft is a single storey cottage located above Pendower beach.
- Hayloft is one of 5 National Trust holiday cottages at Gwendra.
- The sitting room and double bedroom face out to the sea whilst the kitchen and twin bedroom overlook the gardens.
- The cottage has night storage heating/electrorad heating, an open fire and portable oil filled heaters.
- There are shared laundry facilities in the outbuilding adjoining Mowhay cottage.
- The land immediately around the cottage is flat, however the Gwendra site and access to the beach is hilly.

The Cottage is arranged as follows:

The sitting room, bathroom, shower room with lavatory, kitchen/diner, hall and two bedrooms are all on one floor.

### Pre-Arrival

- See the main webpage for booking and location details.
- Please contact us prior to booking if you have any specific access requirements.
- Directions provided with booking.
- Please bring a torch.

### Approach

- The cottage is approached via country lanes and sign posted Veryan followed by Nare Hotel.

## Arrival & Parking Facilities

- The site is accessed by a fairly steep downward-facing concrete and grass track with speed bumps.
- Parking is outside the cottage on a firm level gravelled driveway.
- The distance from the driveway to the cottage is 12m.
- There are 5 stone steps on the gravelled and flagged path leading to the cottage ranging from 130mm – 180mm high. There is a handrail.
- The key safe is on the left-hand side of the door at a height of 1450mm ffl (from floor level). It is operated by a combination lock mechanism.
- There is an outside light over entrance.



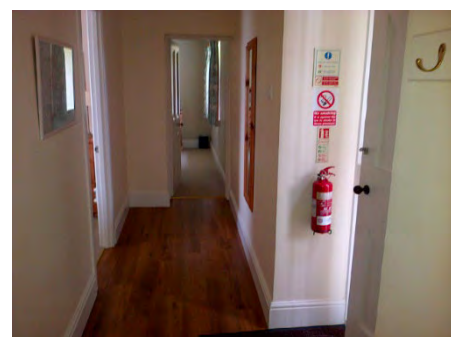
## Getting in (and out) of the cottage

- The main door has a clear opening width of 900mm.
- There is a 160mm high stone step followed by a further stone step and threshold of 200mm high into the cottage.
- The door leads directly into the hall.
- There are no other doors leading outside.

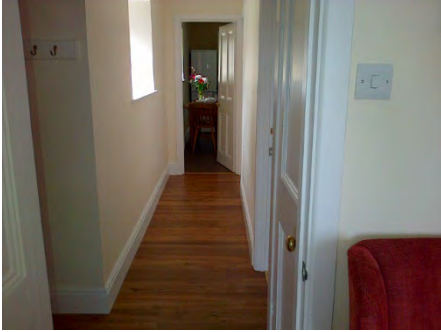


## Getting around the cottage

- There is a vinyl floor covering in the kitchen, lavatory and bathroom.
- There is carpet in the bedrooms and a hard floor in hall and sitting room.
- There is level access throughout.
- Internal doors clear opening widths range from 630mm – 680mm.



the



*Hall to bedrooms*

*Hall to kitchen, lavatory & shower room, and  
bathroom*

## Sitting Room

- The sitting room is approached from the hall.
- There are two windows to the front with sea views.
- There is a central light fitting, table lamp and standard lamp.
- There is a multi-fuel stove.
- There is a sofa with a seat height of 490mm and two armchairs with a seat height of 465mm and 490mm. Both have cushions.
- There is a TV and DVD player.
- There is a digital radio.



## Bathroom

- The bathroom is off the hall.
- The bath is standard at a height of 560mm and has an electric shower overhead with a glass shower screen.
- There is a grab rail at a height of 1100mm from bottom of bath
- The basin is 830mm high.
- There are ceiling lights fitted and a mirror with an integrated shaver light.
- There is no window.
- There is a heated towel rail.
- There are 2 glass shelves at heights of 1280mm and 1560mm





## Shower Room and Lavatory

- The shower room and lavatory are next to the bathroom.
- There is a glass shower cubicle with an internal dimension of 720mm x 720mm
- The shower door has an opening width of 550mm
- There is a handrail within the shower cubicle at a height of 960mm
- The WC is 430mm high.
- The WC is in a recess next to the shower at a width of 670mm
- The basin is 830mm high.
- There is central ceiling lighting and mirror with integrated shaver light.
- There is no window.
- There is a heated towel rail.



## Kitchen/Diner

- Directly off the hall.
- The height of worktop is 930mm.
- There is an electric cooker with ceramic hob with controls to front which is 930mm high.
- There is a fridge freezer, dishwasher, microwave, cordless kettle and toaster.
- There is a track with four ceiling spotlights and under cupboard lighting.
- There is a dining table and four chairs.
- The table has knee clearance of 600mm. The dining chairs are 450mm high.



## Double Bedroom

- The double bedroom is off the hall between the twin bedroom and sitting room.
- There is a centralised double bed 1530mm wide x 1900mm long x 620mm high.
- The clearance underneath the bed is 30mm.
- There is a bedside table and chest of drawers on either side of the bed. These are 790mm – 830mm high and have table lamps.
- There is a chair with a seat height of 460mm.
- There is also a central ceiling light.
- There is a coat hook plate at 1580mm high with 6 cloth hangers.



## Twin Bedroom

- The twin bedroom is off the hall next to the double bedroom.
- There are centralised twin beds 900mm wide x 1970mm long x 630mm high.
- The clearance underneath the beds is 50mm.
- The beds are divided with a chest of drawers which is 800mm high and 790mm Wide
- There is a central ceiling light and two table lamps.
- There is a wardrobe with a clothes rail at 1520mm high.



## Laundry Room

There is a washing machine and tumble dryer in an outbuilding which is 40m away from the cottage along the gravel path and driveway. There are 2 stone steps each 160mm high and a 50mm threshold into this room.



## Garden

- The garden is gently sloping to relatively flat and open with the other cottages.
- There is plenty of space and lawns, there is a fixed washing line.
- There is a seating area directly outside the cottage with a table at a ht of 740mm with 4 chairs at a ht of 430mm.



## Additional Information

- Assistance dogs are welcome at all our cottages
- In the event of a fire, it is the responsibility of the guests to evacuate themselves. Vibrating fire/smoke detectors are available if requested at time of booking. Please contact us if you have any other specific access requirements in this respect.

## Facilities at all cottages

The National Trust aims to expand the list of accessible /equipment/items available at each cottage and these may include

- Cordless kettle
- Hollow fibre bedding
- Chair with armrests
- Good reading light
- Large handle vegetable peeler
- Easy tin opener
- Non-slip mat for bath/shower
- Non-slip place mat
- Easy jar opener
- Information in alternative formats (on request)

Please note that we cannot guarantee that all items will be available at the time of your visit. Please enquire at the time of booking regarding any particular requests.

## Specialist equipment

Other specialist equipment such as wheelchairs, bath seats, toilet frames etc may be available for loan or purchase from the local Red Cross loan centre. Please check this out before booking the Cottage and contact us if you require further information.

<https://www.redcross.org.uk/get-help/borrow-a-wheelchair>

<https://www.redcross.org.uk/get-help/hire-a-toilet-aid>

## Future Plans to improve Access to NT Holiday Cottages

- We are currently in the process of writing Accessibility Guides for all our holiday cottages and improving access over time for all our guests. All feedback is very helpful in informing us of ways in which we can improve access to all our cottages. We welcome any comments or ideas from you about access at this cottage and thank you for taking the time to do this. Please do this in the most convenient way for you. See contact details below or information on website.

## About the Accessibility Guide

- This Accessibility Guide is intended to provide key information about the cottage that may be particularly relevant to guests with disabilities. Please contact us prior to booking if you would like information that is more specific, and we will be happy to oblige.

Email: [holidayenquiries@nationaltrust.org.uk](mailto:holidayenquiries@nationaltrust.org.uk)

Phone: 0344 8002070

## Access for All at the National Trust

- The Access for All office works to improve access at all National Trust cottages and properties. The office welcomes comments and ideas on improving access.

Phone: 01793 818531

Email: [accessforall@nationaltrust.org.uk](mailto:accessforall@nationaltrust.org.uk)

Date: March 2023