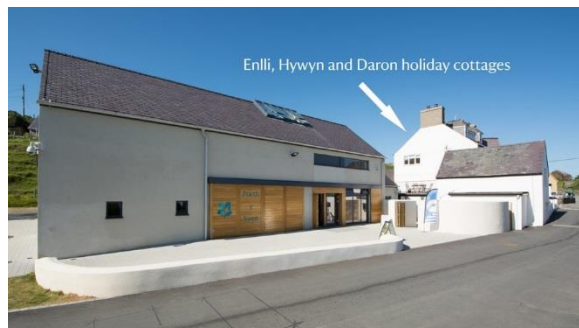


# National Trust

## National Trust Cottages Accessibility Guide



Hywyn  
Henfaes  
Aberdaron  
Pwllhelli  
Gwynedd  
LL53 8BE

**Ref:** 008026

### Introduction

- Hywyn is one of the Henfaes holiday apartments situated in Henfaes house.
- The apartment can accommodate six people plus a cot.
- Central heating throughout.
- Rear garden shared with other Henfaes holiday apartments.
- Parking is available on the adjacent National Trust car park.

The Cottage is arranged as follows:

### Ground Floor:

- Hywyn is the ground floor apartment of Henfaes holiday apartments.
- The apartment is accessed by seven steps to the door at the rear of the property.
- Large kitchen/dining room, hallway, bathroom.
- Situated at the other end of the hallway (towards the front of the property) are two twin bedrooms, a double bedroom and a large lounge.
- There is also access via the main front door.

### Pre-Arrival

- See the main webpage for booking and location details.
- Please contact us prior to booking if you have any specific access requirements.
- Directions provided with booking.
- Please bring a torch if arriving in the dark as there are no streetlights here.

## Approach

- The cottage is in the centre of Aberdaron at the entrance to the large National Trust car park. Guests need to follow the information sent with the booking information with care.

## Arrival & Parking Facilities

- Parking is in the previously mentioned National Trust car park. The key safe is in a black box outside the rear door to the right (as facing). It is operated by a push button mechanism. A torch is recommended especially if arriving in the dark as the numbers on the box can be difficult to see. The key is returned to the key safe on departure.

## Getting in (and out) of the cottage

- There are seven steps leading up to the rear door of the cottage the first of which measures 12.5cm with all others being 15cm in height. .
- There is a further small doorstep of 9cm and a lip of 4cm.
- The rear door has a clear opening width of 78cm.
- There are three steps leading to the front door which measure 10cm, 14cm and 14cm.
- The front door has a clear opening width of 84.5cm.



Front door and rear main access

## Getting around the cottage

### Ground Floor

- Level access from front and rear door throughout the apartment.
- The kitchen, bathroom doors and one of the twin bedroom doors are 74cm wide. The sitting room, twin and double bedroom doors are 71cm wide.

- Width of hallway at narrowest point is 77cm.
- There are wooden floorboards throughout.



Hallway

## Sitting room

- There are two sofas which have a seat height of 46cm. One is 155cm wide, the other 132cm wide.
- There is one wing chair with a seat height of 41cm.
- Large rug with non-slip backing.



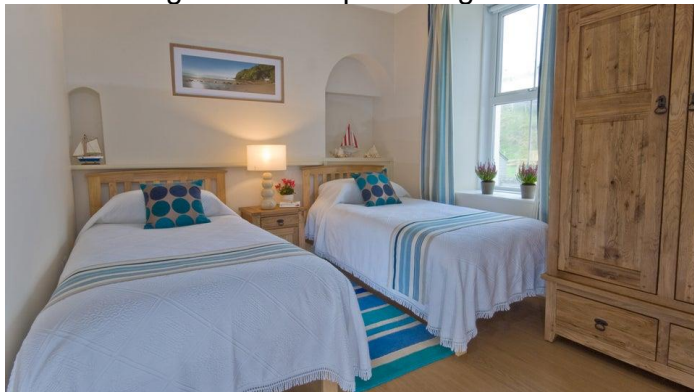
## Kitchen

- Height of worktop is 93cm.
- Electric cooker with ceramic top and fridge freezer.
- Fluorescent lighting.
- Electric toaster and kettle.
- Dining table with a height of 76cm and chairs with a seat height of 45cm.



## Twin Bedroom.

- The beds are 65cm high x 93cm wide and 188cm long.
- Divan beds.
- Bedside table with lamp between beds.
- Wardrobe.
- Small rug with non slip backing between beds.



## Second Twin Bedroom.

- The beds are 65cm high x 93cm wide and 188cm long.
- Divan beds.
- Bedside table with lamp between beds.
- Wardrobe.
- Small rug with non slip backing between beds.

## Double Bedroom

- The bed is 70cm high x 164.5cm wide x 212cm long.
- Wooden bed.
- Bedside table with lamp on each side.
- Chair with seat height of 44.5cm.

## Bathroom

- Ceramic WC, basin and bath.
- The WC is 40cm high.
- The basin is 77cm high.
- Acrylic bath is 52cm high x 165cm x 69cm wide.
- 120cm between edge of basin and bath.



## Garden

- Enclosed informal gardens to the rear of the property with dedicated picnic bench.



## Additional Information

- Assistance dogs are welcome at all our cottages.
- Pets other than assistance dogs cannot be accommodated here.
- In the event of a fire, it is the responsibility of the guests to evacuate themselves. Vibrating fire/smoke detectors are available if requested at time of booking. Please contact us if you have any other specific access requirements in this respect.



## Facilities at all cottages

The National Trust aims to expand the list of accessible /equipment/items available at each cottage and these may include

- Cordless kettle
- Hollowfibre bedding
- Chair with armrests
- Good reading light
- Large handle vegetable peeler
- Easy tin opener
- Non-slip mat for bath/shower
- Non-slip place mat
- Easy jar opener
- Information in alternative formats (on request)

Please note that we cannot guarantee that all items will be available at the time of your visit. Please enquire at the time of booking regarding any particular requests.

## Specialist equipment

Other specialist equipment such as wheelchairs, bath seats, toilet frames etc may be available for loan or purchase from the local Red Cross loan centre. Please check this out before booking the Cottage and contact us if you require further information.

<http://www.redcross.org.uk/standard.asp?id=89425>

## Future Plans to improve Access to National Trust Holiday Accommodation

- We are currently in the process of writing accessibility guides for all our holiday cottages and bunkhouses and improving access over time for all our guests. All feedback is very helpful in informing us of ways in which we can improve access. We welcome any comments or ideas from you about access at this cottage and thank you for taking the time to do this. Please do this in the most convenient way for you. See contact details below or information on website.

## About the Accessibility Guide

- This Accessibility Guide is intended to provide key information about the accommodation that may be particularly relevant to guests with disabilities. Please contact us prior to booking if you would like information that is more specific and we will be happy to oblige.

Email: [cottages@nationaltrust.org.uk](mailto:cottages@nationaltrust.org.uk)

Phone: 0344 8002070

## Access for All at the National Trust

- The Access for All office works to improve access at all National Trust accommodation and properties. The office welcomes comments and ideas on improving access.

Phone: 01793 818531

Email: [accessforall@nationaltrust.org.uk](mailto:accessforall@nationaltrust.org.uk)

Date: May 2023