

National Trust Cottages Accessibility Guide

Cottage Ref: 007014

Park House

Kedleston
Nr Quarndon
Derby
DE22 5JL



Introduction

- Park House is a two storey detached house located in the historic parkland of Kedleston Hall
- All rooms enjoy a sunny aspect and are flooded with natural daylight
- The Cottage is arranged as follows:

Ground Floor:

- Entrance Hall, Utility Room, Cloakroom and WC, Boiler/Laundry Room, Kitchen, Sitting Room and Dining Room

First Floor:

- 2 No. Double Bedrooms (1 with En-suite), 1 No. Twin Room and 1 No. Bathroom

Pre-Arrival

- See the main webpage for booking and location details.
- Please contact us prior to booking if you have any specific access requirements.
- Directions provided with booking

Approach

- The cottage is approached by a short driveway of crushed compacted limestone grit.



Arrival & Parking Facilities

- Off road parking for 3 vehicles. The main entrance door to the cottage is located at the front of the house and a vehicle can be parked immediately in front of the cottage and a further two vehicles to the side of the house.
- Ground surface is relatively flat and constructed of compacted limestone grit. The enclosed courtyard to the rear of the house is partially cobbled and a more uneven surface although there is a paved path around the perimeter of the yard area.



View of Park House showing parking area outside the front door.

Getting in (and out) of the cottage

- Two steps to the entrance door located at the front of the cottage. First Step 100mm high and the second step 140mm high. Door is 570 mm wide. Key safe to right hand side of the door at a height of 1170mm from ground level.



Main Entrance Door & Key Safe

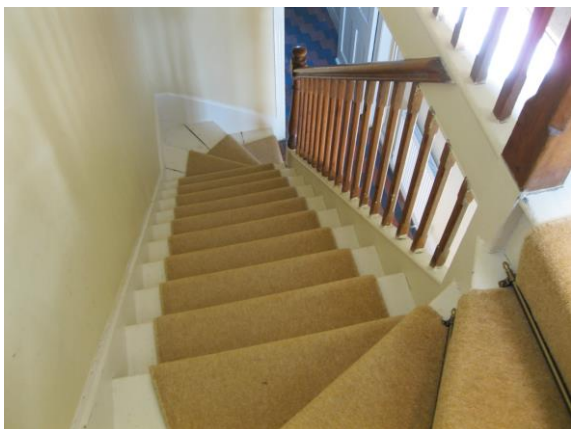
Getting around the cottage

Ground floor:

- One small internal step to the downstairs WC. Step height 30mm.
- Hard flooring to kitchen, hallway, utility room, cloakroom and WC. Carpets to dining room and sitting room.
- All rooms have a sunny aspect and benefit from lots of natural daylight

First floor:

- 15 stairs to first floor. Staircase has handrail to one side. Treads 190mm high by 870mm wide.
- Carpeting and cushion flooring to first floor areas.
- Door widths between 770mm and 790mm throughout.



View of Staircase from Top & Hallway



Kitchen

- Height of worktop is 930mm
- Electric range cooker with two ovens, separate grill and ceramic top
- Fridge, Freezer, Dishwasher, Microwave, Cordless Kettle, Toaster. Washer Dryer in separate laundry/boiler room.
- Lever Handle tap to sink.
- Island with three chairs. None of the chairs have armrests. Seat height is 770mm.



Ground floor WC

- Small step into WC. Step height is 30mm.
- The WC is 430mm high

Sitting Room

- Large room with dual aspect and views overlooking garden and parkland. Open fire.
- Two sofas both with a seat height of 490mm.
- One armchair with a seat height of 500mm.
- Central ceiling pendant with 2 No. table lamps
- TV with 32" Screen and separate DVD player.



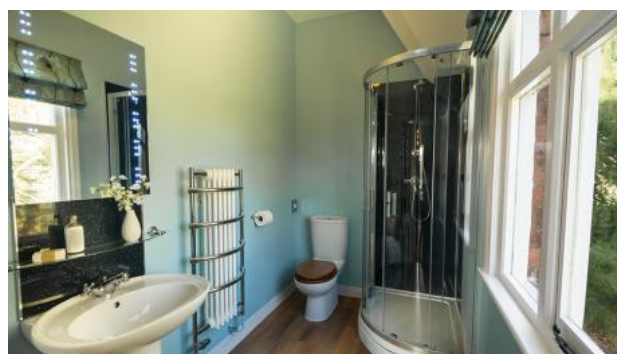


Dining Room

- Spacious room with dual aspect and views towards parkland.
- Dining table and 6 No. Chairs with seat height of 480mm. None of the chairs have armrests.
- Central light pendant and 2 No. table lamps.
- CD/Radio with Ipod Docking port.

Double Bedroom With En-suite Shower Room

- Bed is 670mm high
- Firm mattress 150mm (5ft) wide
- Bedside tables with lamps to each side of bed
- Armchair with seat height of 500mm.
- Good circulating Space
- Ensuite bathroom with WC, basin and shower. WC height 410mm.
- Step into shower of 210mm. Entrance width to shower cubicle 440mm. Shower controls 970mm from base of shower tray.
- The shower riser rail extends from 1370mm – 1900mm from base of shower tray.





Double Bedroom

- Bed is 660mm high
- Firm mattress 150mm (5ft) wide
- Bedside tables with lamps to each side of bed
- Good circulating Space

Twin Bedroom

- Beds are 610mm high
- Firm mattresses 900mm (3') wide
- Central chest of drawers with bedside lamps to side of each bed
- Lloyd Loom armchair with seat height of 410mm.
- Good circulating space



Bathroom

- Traditional roll top bath
- Separate quadrant shower cubicle with step up of 210mm. Entrance to shower enclosure is 490mm wide.
- Shower controls are 970mm from base of shower tray.
- The shower riser rail extends from 1370mm – 1900mm from base of shower tray
- WC height 420mm



Garden

- Large garden laid to lawn with views over the parkland
- Small seating area to the front of the house



Additional Information

- Assistance dogs are welcome at all our cottages
- In the event of a fire, it is the responsibility of the guests to evacuate themselves. Vibrating fire/smoke detectors are available if requested at time of booking. Please contact us if you have any other specific access requirements in this respect.

Facilities at all cottages

In addition to the standard equipment and facilities, each cottage is equipped with the following:

- Cordless kettle
- Chair with armrests in living room.
- Good reading light
- Large handle vegetable peeler
- Easy tin opener
- Non-slip mat for bath/shower
- Non-slip place mat
- Easy jar opener
- Information in alternative formats (on request)

We aim to provide these items in all cottages but please check when booking as to their availability and to check if new items have been added to the list.

Specialist equipment

Other specialist equipment such as wheelchairs, bath seats, toilet frames etc may be available for loan or purchase from the local Red Cross loan centre. Please check this out before booking the Cottage and contact us if you require further information.

<http://www.redcross.org.uk/standard.asp?id=89425>

Future Plans to improve Access to NT Holiday Cottages

- We are currently in the process of writing accessibility guides for all our holiday cottages and improving access over time for all our guests. All feedback is very helpful in informing us of ways in which we can improve access to all our cottages. We welcome any comments or ideas from you about access at this cottage and thank you for taking the time to do this. Please do this in the most convenient way for you. See contact details below or information on website.

About the Accessibility Guide

- This Accessibility Guide is intended to provide key information about the cottage that may be particularly relevant to guests with disabilities. Please contact us prior to booking if you would like information that is more specific and we will be happy to oblige.

Email: cottages@nationaltrust.org.uk.

Phone: 0344 800 2070

Access for All at the National Trust

- The Access for All office works to improve access at all National Trust cottages and properties. The office welcomes comments and ideas on improving access.

Phone: 01793 818531

Email: accessforall@nationaltrust.org.uk