

National Trust Cottages Accessibility Guide

West House

Lansallos

Looe

PL13 2PU

Ref: 011014



Introduction

- West House is a two storey traditional farmhouse located in the hamlet of Lansallos.
- It has far reaching sea views.
- It adjoins Old House.
- The kitchen, sitting room/diner and lavatory are on the ground floor while the bedrooms and bathroom are on the first floor.
- The cottage has night storage heating, rointe electric heaters, convector heaters and an open fire.
- The land immediately around the cottage is reasonably flat.
- There is a gravelled level driveway in front of the cottage.

The Cottage is arranged as follows:

The kitchen, sitting room/diner, lavatory and entrance hall are on the ground floor. While the bedrooms and bathroom are on the first floor.

Pre-Arrival

- See the main webpage for booking and location details.
- Please contact us prior to booking if you have any specific access requirements.
- Directions provided with booking.
- Please bring a torch.

Approach

- The cottage is approached via country lanes.

Arrival & Parking Facilities

- Parking is adjacent to the cottage in the driveway which has a firm gravelled and concrete surface.
- The distance from the parking place to the cottage is 3m.
- The key safe is on the left hand side of the door at a height of 1350mm ffl (from floor level). It is operated by a combination lock mechanism.
- There is an outside light above the entrance door.



Getting in (and out) of the cottage

- The main door has a clear opening width of 790mm.
- This has a wooden & metal threshold which is 70mm high.
- The door leads directly into the hall.
- There is also a door on the side of the house by the driveway which leads directly into the lounge/dining room.



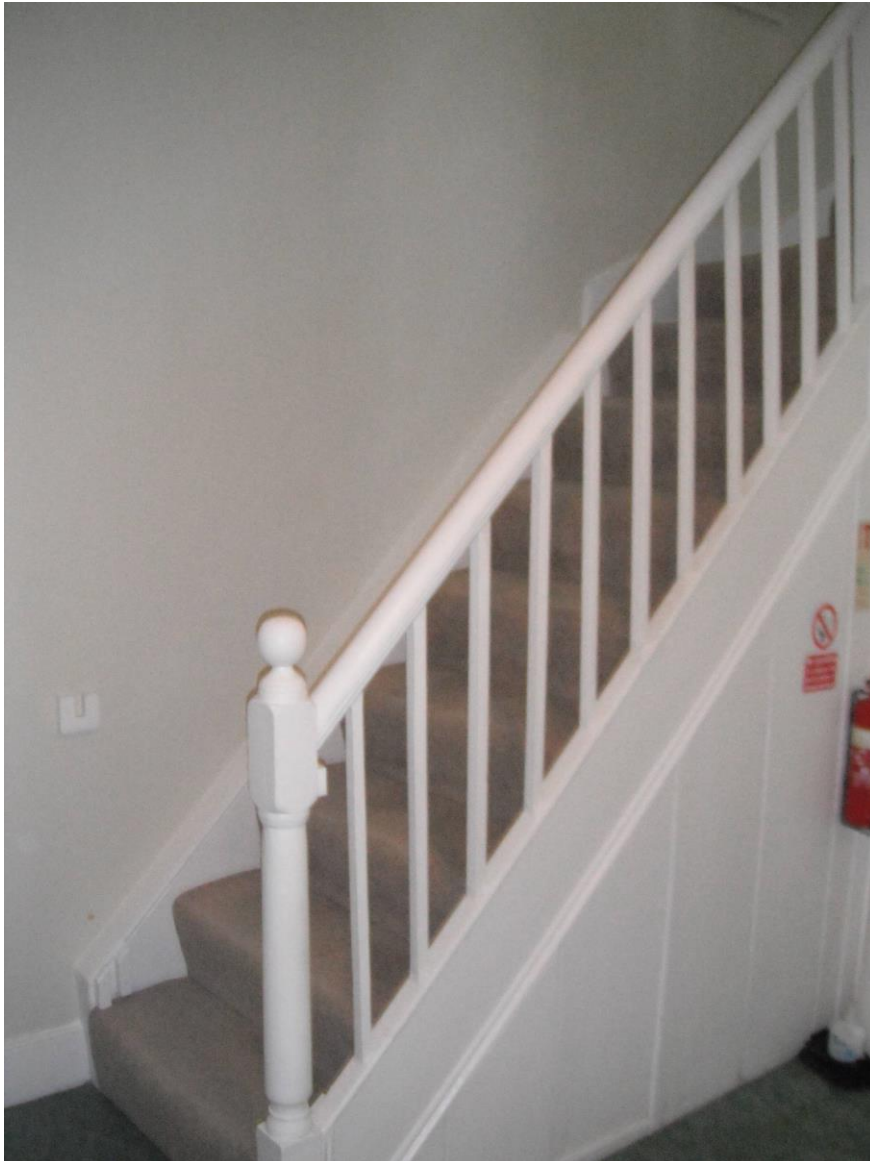
Getting around the cottage

- There is a hard floor covering in the hall, sitting room & lavatory and bathroom.
- There is carpet in the bedrooms, stairs and landing.
- There is an uneven slate floor in the kitchen.
- Internal doors have clear opening widths from 650mm to 740mm.
- There are 13 stairs with a wooden hand rail that ascend to the first floor.

Ground Floor

Hall

- Doors to kitchen, sitting room/diner and lavatory.
- Stairs rise to first floor.
- There is a small pew with a seat height of 440mm



Lavatory

- The WC is 440mm high.
- The basin is 810mm high.
- There is a central ceiling light fitting, mirror with a light.
- There is a shaver point and heated towel rail.



Kitchen

- Directly off the hall.
- The height of the worktop is 920mm.
- There is an electric cooker with controls to front which is 920mm high.
- There is a fridge freezer, dishwasher, washer/dryer, microwave, cordless kettle and toaster.
- There are six ceiling spot lights and cupboard lighting



Sitting Room/Diner

- The sitting room is approached from the hall.
- There are windows to the front with views over the garden, countryside and sea.
- There are two ceiling lights, a table lamp and a standard lamp.
- There are two sofas with a seat height of 500mm, one sofa is 18800mm wide and the other is 13900mm wide. Both have cushions.
- There is a TV and DVD player.
- There is a digital radio.
- There is a dining table and six chairs.
- The table has knee clearance of 630mm. The dining chairs are 480mm high.



First Floor

Landing



Bathroom

- The bath is free standing; it is 630mm high and has a shower attachment to the taps.
- The WC is 430mm high
- The basin is 840mm high.
- The shower cubicle measure 720mm x 980mm. The step into the shower is 220mm high. The door has a clear opening width of 350mm. The shower is electric.
- There is a central ceiling light fitting, two mirror lights and a heated towel rail.



Double Bedroom

- There is a centralised double bed 1550mm wide x 1970mm long x 810mm high.
- The clearance underneath the bed is 36mm.
- There are two bedside tables 760mm high with table lamps.
- There is also a central ceiling light.
- There is a built in wardrobe with a clothes rail at 1700mm ffl and shelves.
- There are views of the countryside and sea.
- There is a chair with a seat height of 400mm.



Twin Bedroom

- Next to double bedroom.
- There are two single beds 900mm wide x 1900mm long x 680mm high which can be made into a double on request.
- The clearance underneath the beds is 40mm.
- There are two bedside tables which are 680mm high with table lamps.
- There is also a central ceiling light.
- There is a built in wardrobe with a clothes rail at 1580mm ffl.
- There is a chair with a seat height of 450mm.
- The outlook is over the driveway.



Twin Bedroom

- Next to double bedroom and bathroom.
- There are two single beds 900mm wide x 1900mm long x 640mm high.
- The clearance underneath the beds is 40mm.
- There is a chest of drawers next to one bed which is 810mm high with a table lamp. Next to the other bed there is a bedside table which is 760mm high with a table lamp.
- There is also a central ceiling light.
- There is a built in wardrobe with a clothes rail at 1600mm ffl.
- There are views of the countryside and sea.



Garden

- The garden is flat and is bounded by stone walls and wooden fencing
- The height of the garden boundary ranges from 1050mm to 1400mm.
- There is a table with fixed bench seating in the garden.
- There are sea views from the garden.
- There is a brick BBQ and washing line in the garden.



Additional Information

- Assistance dogs are welcome at all our cottages
- In the event of a fire, it is the responsibility of the guests to evacuate themselves. Vibrating fire/smoke detectors are available if requested at time of booking. Please contact us if you have any other specific access requirements in this respect.

Facilities at all cottages

The National Trust aims to expand the list of accessible /equipment/items available at each cottage and these may include

- Cordless kettle
- Hollowfibre bedding
- Chair with armrests
- Good reading light
- Large handle vegetable peeler
- Easy tin opener
- Non-slip mat for bath/shower
- Non-slip place mat
- Easy jar opener
- Information in alternative formats (on request)

Please note that we cannot guarantee that all items will be available at the time of your visit. Please enquire at the time of booking regarding any particular requests.

Specialist equipment

Other specialist equipment such as wheelchairs, bath seats, toilet frames etc may be available for loan or purchase from the local Red Cross loan centre. Please check this out before booking the Cottage and contact us if you require further information.

<https://www.redcross.org.uk/get-help/borrow-a-wheelchair>

<https://www.redcross.org.uk/get-help/hire-a-toilet-aid>

Future Plans to improve Access to NT Holiday Cottages

- We are currently in the process of writing accessibility guides for all our holiday cottages and improving access over time for all our guests. All feedback is very helpful in informing us of ways in which we can improve access to all our cottages. We welcome any comments or ideas from you about access at this cottage and thank you for taking the time to do this. Please do this in the most convenient way for you. See contact details below or information on website.

About the Accessibility Guide

- This Accessibility Guide is intended to provide key information about the cottage that may be particularly relevant to guests with disabilities. Please contact us prior to booking if you would like information that is more specific and we will be happy to oblige.

Email: cottages@nationaltrust.org.uk

Phone: 0344 8002070

Access for All at the National Trust

The Access for All office works to improve access at all National Trust cottages and properties. The office welcomes comments and ideas on improving access.

Phone: 01793 818531

Email: accessforall@nationaltrust.org.uk

Date September 2022

