

National Trust Cottages Accessibility Guide

February 2022

Lighthouse Keepers Cottage 1
Souter Lighthouse
Coast Road
Whitburn
Sunderland SR6 7NH

Ref: 017004



Introduction

- Lighthouse Keepers Cottage 1 is a two-bedroom cottage on two floors.
- Both bedrooms are on the first floor.
- Bathroom with walk-in shower, wash hand basin and WC are on ground floor.
- Located on the South side of Souter Lighthouse with separate private entrance.
- Change of level within ground floor – two steps down into inner hallway leading to bathroom.
- Cottage is adjacent to Lighthouse Keepers Cottage 2 (017003)

Pre-Arrival

- See the main webpage for booking and location details.
- Please contact us prior to booking if you have any specific access requirements.
- Directions provided with booking.
- Bring torch if arriving in dark.

Approach

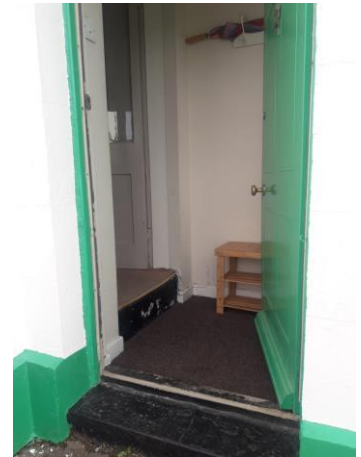
Directly off main road down a narrow, walled, cobbled driveway; the entrance to the lighthouse complex is directly in front of you. At end of cobbles take right turn, negotiating a partially raised surface, and then left driving past the front of the cottages to the designated parking space in front of you.

Arrival & Parking Facilities

- A designated parking space 20 metres from the door of the cottage.
- The key safe is located to the left of the doorway. The code is sent with the booking confirmation details.

Getting in (and out) of the cottage

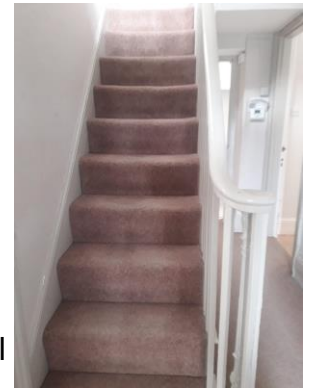
- One stone step (130mm) high into the porch; threshold 40mm. Followed immediately by step down in to entrance lobby 30mm.
- 90 degree left turn immediately after entering front door to inner double doors into cottage.
- One step (210mm) from entrance lobby into the inner hallway.
- Clear open width of front door is 830mm.
- Clear open width of inner double doors is 730mm.



Getting around the cottage

Ground floor:

- Ground floor is level with inner doors to Sitting room and Kitchen.
- Hallway is 650mm wide at narrowest point.
- Door and two steps (90mm & 80mm) down from the inner hallway into the inner corridor leading to bathroom.
- Slight step down into bathroom (180mm).
- Flooring is a mixture of vinyl in kitchen and bathroom areas and fitted carpets to stairs and bedrooms. Wooden floor with rug in sitting room.
- Ten stairs lead up to a half landing with 180 degree turn and a further 3 stairs to top landing. Stairs are 200mm high with a handrail on right hand side



First floor:

- All on same level.
- Fully carpeted.

Ground Floor:

Sitting Room

- Door into sitting room 830mm wide.
- 2 x 2 seater sofas 480mm seat height.
- TV, DVD, and Bluetooth speaker.
- One floor lamp and one table lamp.
- Wooden floor with rug.
- 2 x radiators.

Kitchen / Dining Room

- Kitchen is a mixture of floor standing and wall mounted units.
- Height of worktop is 910mm.
- Freestanding electric cooker with two ovens and ceramic hob.
- Microwave, 50/50 fridge freezer, washing machine, dishwasher, toaster and cordless kettle.
- Twin handled mixer tap to sink.
- Four overhead spotlights and strip lights under wall mounted Cupboards.
- Kitchen table 780mm high with 620mm clear knee space underneath.
- Four wooden chairs; seat height 470mm.
- 1 x radiator.
- Vinyl floor.



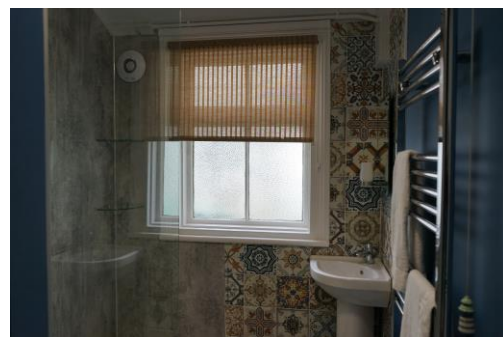
Inner hall

- Two steps down from hallway (90mm & 80mm).
- Cross corridor to access bathroom.
- Carpeted (being changed to vinyl flooring April 2022)
- 1 x radiator.



Bathroom

- Maximum door width 725mm.
- WC, basin and walk-in shower.
- WC is 420mm high
- Basin is 820mm high.
- 1 x radiator/towel rail.



First Floor:

Double Bedroom

- Spacious twin aspect room with sea view.
- Door 830mm wide.
- Kingsize metal bed 2000mm long and 1500mm wide with headboard and footboard.
- Height to top of mattress is 630mm.
- Bedside cabinets on either side.
- Lamps on bedside cabinets.
- Built-in cupboards
- Free standing furniture includes chair and chest of drawers.
- Wall-mounted mirror.



Twin Bedroom

- Spacious light room with sea view.
- Door 830mm wide.
- 2 x single metal beds 850mm wide and 1920mm long, with head and tail boards.
- Height to top of mattress is 650mm.
- A bedside table between the beds.
- 1 x bedside lamp.
- 1 x chair.
- 1 x single wardrobe.
- Built in cupboards.
- Wall-mounted mirror.

Garden

- Enclosed garden for sole use of the guests, to the front of the cottage with sea views and picnic bench. Garden is separated from the cottage by an access road.
- Dogs welcome.

Additional Information

Facilities at all cottages

The National Trust aims to expand the list of accessible /equipment/items available at each cottage and these may include

- Cordless kettle
- Hollowfibre bedding
- Chair with armrests
- Good reading light
- Non-slip mat for bath/shower
- Information in alternative formats (on request)

Please note that we cannot guarantee that all items will be available at the time of your visit. Please enquire at the time of booking regarding any particular requests.

Specialist equipment

Other specialist equipment such as wheelchairs, bath seats, toilet frames etc may be available for loan or purchase from the local Red Cross loan centre. Please check this out before booking the Cottage and contact us if you require further information.

<http://www.redcross.org.uk/standard.asp?id=89425>

Future Plans to improve Access to National Trust Holiday Accommodation

- We are currently in the process of writing accessibility guides for all our holiday cottages and bunkhouses and improving access over time for all our guests. All feedback is very helpful in informing us of ways in which we can improve access. We welcome any comments or ideas from you about access at this cottage and thank you for taking the time to do this. Please do this in the most convenient way for you. See contact details below or information on website.

About the Accessibility Guide

- This Accessibility Guide is intended to provide key information about the accommodation that may be particularly relevant to guests with disabilities. Please contact us prior to booking if you would like information that is more specific and we will be happy to oblige.

Email: holiday.enquiries@nationaltrust.org.uk

Phone: 0344 8002070

Access for All at the National Trust

- The Access for All office works to improve access at all National Trust accommodation and properties. The office welcomes comments and ideas on improving access.
Phone: 01793 818531
Email: accessforall@nationaltrust.org.uk

Date: 28th February 2022