

National Trust Cottages Accessibility Guide Template

Minstergate (020024)
30 Goodramgate,
York,
YO1 2LG



Introduction

- First floor cottage in the centre of York.
- The cottage has its own front door and is accessible directly from the pavement. Next door to the National Trust shop.
- It comprises of six rooms on the first floor of the building.

The Cottage is arranged as follows:

Ground Floor:

- Access to the cottage through a corridor and staircase.

First Floor:

- Kitchen, large dining/sitting room, one bedroom, dressing room, and a bathroom with shower over bath.

Pre-Arrival

- See the main webpage for booking and location details.
- Please contact us prior to booking if you have any specific access requirements.
- Directions provided with booking

Approach

- Directly accessible from the street.

Arrival & Parking Facilities

- Parking is available within walking distance of the cottage, these are all pay and display, the closest being Monk Bar Car Park.

Getting in (and out) of the cottage

- The entrance has a stone step 190mm high and a metal threshold 30mm high. The front door has a clear opening of 770mm.



Getting around the cottage

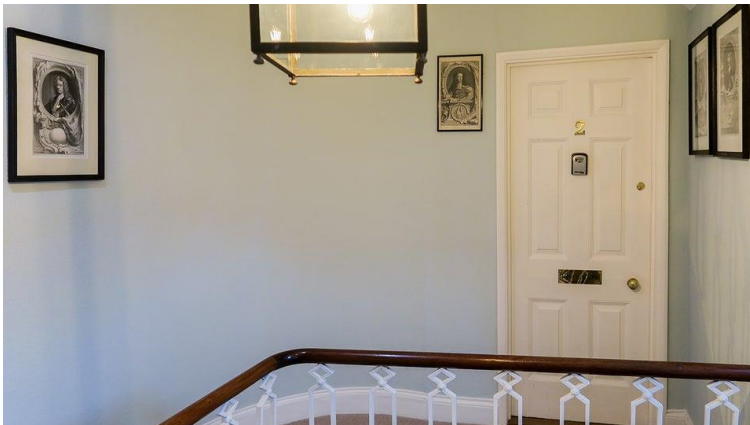
Ground floor:

- Floor surface is vinyl flooring, with door mat.
- Stairs have two flights and are curved mid-way.
- Stairs are shallow and carpeted, there are 17 steps, 170mm high, and one banister all the way up.



First floor:

- The floors are uneven in the property
- Floor surface is carpeted, vinyl flooring and with loose rugs.
- Apartment door 670mm wide



- Hallway two steps 200mm high – carpeted.



- Bedroom door 800mm wide with an uneven threshold of 40mm



- Dressing Room door (leading off the bedroom) 750mm wide; small step 80mm.



- Hallway low beam 1670mm high



- Kitchen door 700mm wide.
- Bathroom door 700mm wide
- Dining and sitting room door 690mm wide, and small step 40mm



Kitchen



- Height of worktop is 925mm;
- Four electric hobs and electric oven;
- Integrated Fridge/Freezer;
- Integrated Dishwasher;
- Integrated Washer/Dryer;
- Microwave, kettle and toaster.

Bathroom

- WC, basin and bath with electric shower above. Without hand grip
- The WC is 430 mm high
- Bath is 540 mm high, 1460 mm length, 660 mm widest width, lever taps. With shower over (no hand rail).
- Pedestal basin 840mm high, with lever taps



Sitting Room

- Sofa chair 450 mm high
- Sofa chair 470 mm high.
- TV & DVD equipment.
- One lamp.
- Coffee table
- Tallboy drawers



Dining Room

- Dining table 772 mm high.
- Four dining chairs 480 mm high



Dressing Room

- Chest of drawers
- Mirror

Double Bedroom

- Double bed 1490 mm wide, 1980 mm length, 600 mm height, 370 mm space between floor and mattress.
- Bedside tables and lamps.
- Dressing table and wardrobe.
- Two occasional chairs 460 mm and 270 mm.



Additional Information

- Assistance dogs are welcome at all our cottages
- In the event of a fire, it is the responsibility of the guests to evacuate themselves. Vibrating fire/smoke detectors are available if requested at time of booking. Please contact us if you have any other specific access requirements in this respect.

Facilities at all cottages

The National Trust aims to expand the list of accessible /equipment/items available at each cottage and these may include

- Cordless kettle
- Hollowfibre bedding
- Chair with armrests
- Good reading light
- Large handle vegetable peeler
- Easy tin opener
- Non-slip mat for bath/shower
- Non-slip place mat
- Easy jar opener
- Information in alternative formats (on request)

Please note that we cannot guarantee that all items will be available at the time of your visit. Please enquire at the time of booking regarding any particular requests.

Specialist equipment

If you are hiring or bringing your own equipment be aware that it may be helpful to let us know so that we can check in more detail whether it will fit into the cottage.

Future Plans to improve Access to NT Holiday Cottages

- We are currently in the process of writing Accessibility Guides for all our holiday cottages and improving access over time for all our guests. All feedback is very helpful in informing us of ways in which we can improve access to all our cottages. We welcome any comments or ideas from you about access at this cottage and thank you for taking the time to do this. Please do this in the most convenient way for you. See contact details below or information on website.

About the Accessibility Guide

- This Accessibility Guide is intended to provide key information about the cottage that may be particularly relevant to disabled guests. Please contact us prior to booking if you would like information that is more specific and we will be happy to oblige.

Email: holiday.enquiries@nationaltrust.org.uk

Phone: 0344 800 2070

The National Trust

- The National Trust works to improve access at all our accommodation and properties. The office welcomes comments and ideas on improving access.

Phone: 01793 818531

Email: accessforall@nationaltrust.org.uk

Date: March 2022