

National Trust Cottages Accessibility Guide

Nanceglos House

Trengwainton
Madron
Penzance
TR20 8RZ

Ref: 011059



Introduction

Nanceglos is a large, stone house on the boundary of the National Trust gardens at Trengwainton. It has gas central heating and a log burner. Enclosed garden.

The cottage is arranged as follows:

Ground Floor: Hall, sitting room, dining room with stairs to first floor. Corridor leading to twin bedroom, shower, kitchen and utility

First floor: Stairs lead up from dining room to landing. Doors off landing to two double bedrooms (one ensuite). Twin bedroom, single bedroom, WC, bathroom.

Pre-Arrival

- See the main webpage for booking and location details.
- Please contact us prior to booking if you have any specific access requirements.
- Directions provided with booking

Arrival & Parking Facilities

Follow directions to Trengwainton. Turn right in front of the white gates and follow the road for 50metres to the main entrance for Trengwainton garden and car parks. Follow signs for Nanceglos House along the narrow lane. The unmarked parking area for Nanceglos is bordered by big stones on the left of the track. There is room for up to four vehicles.



*Turn right in front of the white gates and head up the road to the main garden entrance (centre picture)
Follow the signs for Nanceglos House which is straight ahead along the narrow lane*



Parking area near the cottage



Front gate into garden

Getting in (and out) of the cottage

- From the parking area there is a short walk to the picket front gate (1070mm wide)
- A 200mm stone step drops down to the gravel path leading to the front door.
- Three stone steps (100mm, 190mm and 150mm) lead to the solid wooden stable-type front door with canopy above. The threshold step is 190mm high.
- Combination key safe on wall to the right of the front door
- Outside light, but we recommend that guests bring a torch with them

Getting around the cottage

Ground floor

- Front door into small porch/hall. Doors to sitting room and dining room. Stairs from dining room to first floor. Doorway to corridor running along the back of the house leading to twin bedroom, shower, utility room and back door.

First Floor

- Turning stairs up from dining room to landing. Doors off landing to two double bedrooms, twin bedroom, single bedroom, WC and bathroom.

Porch/hall

- Wooden stable type door 1000mm wide
- Terracotta tiled floor with small rug
- Ceiling light
- Multi-paned glass door to dining room
- Door to sitting room



Sitting room

- Door (1030mm wide) with a 20mm threshold
- Uneven quarry-tiled flooring with large central rug
- 4 large windows to front and side of property overlooking garden
- Vaulted ceiling
- 4 spotlights, 3 double wall lights, 2 table lamps
- Log burner
- 41-inch TV with separate DVD player
- 2 x three-seater sofas (1800mm wide x 360mm high with 520mm back height) (1800mm wide x 420mm high with 400mm back height)
- 1 x two-seater sofa (1500mm wide x 400mm high with 420mm back height)
- Wooden chest/coffee table 760mm wide x 1570 long x 550 mm high)
- 2 x side tables 460mm and 400mm high
- Wing armchair 440mm high x 550mm wide with 800mm back height
- Armchair 410mm high x 508mm wide with 630mm back height
- Writing desk with 5 drawers
- Wooden chair with arms 450mm high x 470mm wide with 550mm back height
- Upholstered low stool/coffee table 350mm high x 1390mm long x 720mm deep





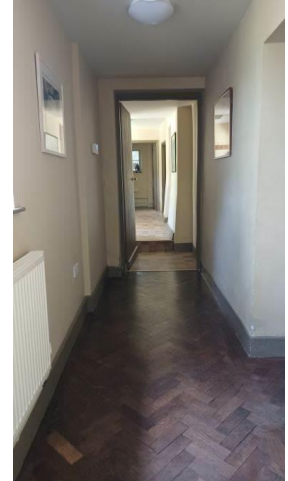
Dining Room

- Door with small glass panes from porch into dining room (800mm wide)
- Parquet flooring
- Window to front overlooking garden, window to rear of property
- 6 spotlights and a table lamp
- Non-functioning fireplace
- Wooden dining table 780mm high
- 6 wooden dining chairs 440mm seat height
- Wooden sideboard 850mm high x 1800mm long x 650mm wide
- 3 small wooden schoolroom type chairs seat height 430mm
- Understairs cupboard
- Stairs to first floor with 2 steps up, then a right turn to the rest of the staircase
- Doorway to back corridor leading to kitchen, bedroom, shower and utility



Back corridor

- Open doorway from dining room (800mm wide)
- Parquet flooring to first part of corridor then vinyl flooring with a door and a 190mm step part way along
- 3 windows along corridor
- 2 ceiling lights
- Doors off to kitchen, bedroom, shower, utility and door to rear of property



Kitchen

- Door from inner corridor (720mm wide)
- Wood floor
- 8 spotlights
- 2 windows to front
- A range of floor cupboards and drawers under a 940mm high worktop
- A range of wall cupboards, some glass fronted
- Plate rack above built-in floor cupboard
- One and half sized ceramic sink and drainer with lever operated mixer tap
- Central island (910mm high) and breakfast bar (950mm high)
- 3 padded high stools 700mm seat height and 280mm back height
- *Cookmaster* range-type cooker with ceramic hob, grill and 2 ovens
- Cooker extractor hood with light
- Stand-alone fridge-freezer
- Integrated dishwasher, kettle, microwave, toaster





Shower room

- Vinyl flooring
- 1 ceiling light
- 1 window to front
- Shower cubicle 250mm step up. Non-electric shower. Door 590mm wide
- Wash basin 790mm high with twist taps
- WC 400mm seat height
- Wall mirror with light above and shaver socket to side
- Electric heated towel rail
- Wooden chair with seat height of 440mm
- Door to corridor
- Door to twin bedroom



Twin bedroom (ground floor)

- Wooden door from shower 700mm wide
- Fitted carpet
- 1 ceiling light and 2 bedside lamps
- 2 windows overlooking front garden, one with window seat below at a height of 530mm
- 2 single beds 630mm high x 1940mm long x 940mm wide
- 2 bedside tables 800mm high
- 3-drawer wooden chest with integrated mirror 900mm high
- Clothes hanging rail built into empty fireplace recess
- Dehumidifier
- Door to back corridor (800mm wide)



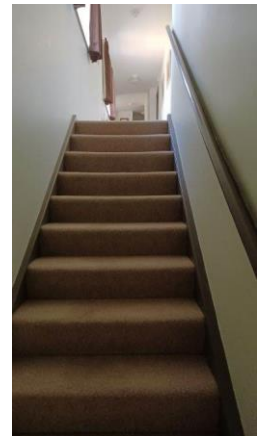
Utility room

- Door from back corridor (730mm wide)
- Vinyl flooring
- 1 ceiling light
- Window to side of property
- Washing machine and separate tumble dryer under a 950mm high worktop



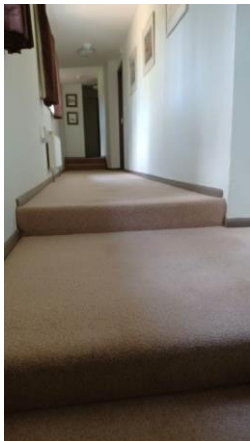
Stairway to first floor (from dining room)

- Fitted carpet
- 2 steps to small landing (170mm and 190mm high)
- Locked storage cupboard
- 90 degree right turn to 12 further steps (170mm high) up to first floor
- Handrail on right hand side 800mm high



Landing

- Fitted carpet
- 3 windows to rear of property
- 4 ceiling lights
- 3 steps along the landing, all 180mm high
- Doors off landing to ensuite double bedroom, double, twin and single bedrooms, WC and bathroom



L: looking along landing from top of stairs

R: looking back down landing from WC (door on right is a store cupboard)

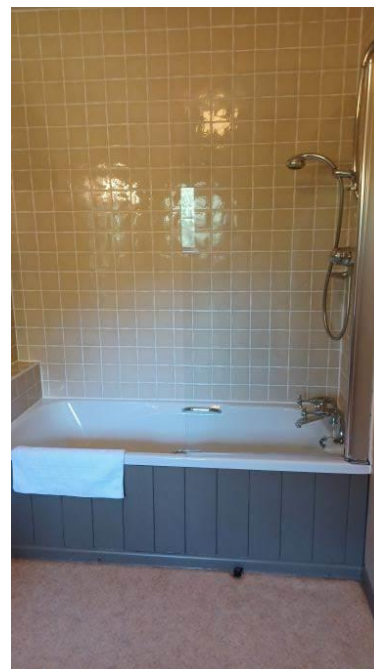
Double bedroom with ensuite

- Door from landing 640mm wide
- Fitted carpet
- Window overlooking front garden
- 1 ceiling light and 2 bedside lamps
- King-size bed with metal bedstead 600mm high x 2000mm long x 1500mm wide
- 2 wooden bedside cabinets 740mm high
- Built-in wooden wardrobe
- Wooden stool 500mm high
- Door to ensuite 730mm wide



Double ensuite

- Vinyl flooring
- 1 window to front
- 2 wall lights
- Heated towel rail
- WC 420mm high
- Wash basin 790mm high with twist taps
- Bath with 2 grips and shower over (510mm high x 1650mm long x 680mm wide)
- Non-electric shower over bath with glass side screen
- Wall mirror with light and shaver point



Double bedroom

- Door from landing 720mm wide
- Fitted carpet
- 2 windows to front
- 1 ceiling light and 2 bedside lamps
- 1 double bed 600mm high x 2000mm long x 1350mm wide
- Wooden bedside cabinet 800mm high
- Round table 740mm high
- Dressing table with integrated mirror 910mm high
- Wooden blanket chest 440mm high x 940mm long x 470mm wide
- Wardrobe incorporating low drawer and with mirror at front
- Low padded nursing chair 330mm seat height



Twin bedroom

- Door from landing 640mm wide
- Fitted carpet
- Window to front
- 1 ceiling light and 1 bedside lamp
- 2 metal bedsteads 600mm high x 2000mm long x 1000mm wide
- Wooden bedside cabinet 760mm high
- Wooden chest of drawers with mirror above (840mm high)
- Small wooden chair 440mm seat height



Single bedroom

- Door from landing 640mm wide
- Fitted carpet
- Window to front
- 1 ceiling light and 1 bedside lamp
- Single bed 600mm high x 2000mm long x 1000mm wide
- Wooden bedside cabinet 820mm high
- Wooden dressing table with 4 drawers and an integrated mirror 810mm high
- Small wooden chair 420 seat height
- Clothes hanging pole 1700mm high



Bathroom

- Wooden door 650mm wide
- Vinyl flooring
- 2 windows and extractor fan
- Ceiling light
- Wall mirror with light and shaver point
- Heated towel rail
- Washbasin 790mm high with twist taps
- Bath with twist taps, grips and shower over 520mm high x 1650mm long x 680mm wide
- Non-electric shower over bath with safety glass screen



WC

- Wooden door 570mm wide
- Vinyl flooring
- Ceiling light
- Extractor fan
- WC 420 seat height



Garden

- Gently sloping and level grassed areas at front of cottage on two levels with gravel paths around front and side of cottage and to the front and side garden gates
- The front border of the garden is marked by a low stone wall and wicket gate. The lower garden area at the front is bordered with trees and shrubs offering considerable privacy
- 2 bench-type picnic tables 440mm seat height 760mm table height
- 3 shallow steps to lower garden with rotary drier
- Around the back of the cottage is a log store and bin area
- From the lower level at the back of the cottage 7 stone steps with a handrail on the left lead up to the concreted path leading to the rear door of Nanceglos
- There are 2 exterior lights at the back of the property
- The path extends from the back of the cottage round to the front where there is another small wooden gate and green waste bins

Pictures below L-R

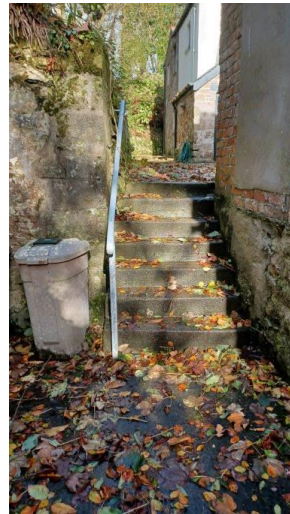
Front garden immediately outside the cottage

Steps down to the more secluded lower garden area

Looking from lower garden up steps to main front garden

Looking from lower front garden to the side of house





Above pictures L-R:

Log store at back of cottage

Steps up from log store to rear of property

Path around rear of property

Additional Information

Facilities at all cottages

The National Trust aims to expand the list of accessible /equipment/items available at each cottage and these may include

- Cordless kettle
- Hollowfibre bedding
- Chair with armrests
- Good reading light
- Large handle vegetable peeler
- Easy tin opener
- Non-slip mat for bath/shower
- Non-slip place mat
- Easy jar opener
- Information in alternative formats (on request)

Please note that we cannot guarantee that all items will be available at the time of your visit. Please enquire at the time of booking regarding any particular requests.

Specialist equipment

Other specialist equipment such as wheelchairs, bath seats, toilet frames etc may be available for loan or purchase from the local Red Cross loan centre. Please check this out before booking the Cottage and contact us if you require further information.



National Trust

<https://www.redcross.org.uk/get-help/borrow-a-wheelchair>

<https://www.redcross.org.uk/get-help/hire-a-toilet-aid>

Future Plans to improve Access to National Trust Holiday Accommodation

- We are currently in the process of writing accessibility guides for all our holiday cottages and bunkhouses and improving access over time for all our guests. All feedback is very helpful in informing us of ways in which we can improve access. We welcome any comments or ideas from you about access at this cottage and thank you for taking the time to do this. Please do this in the most convenient way for you. See contact details below or information on website.

About the Accessibility Guide

- This Accessibility Guide is intended to provide key information about the accommodation that may be particularly relevant to guests with disabilities. Please contact us prior to booking if you would like information that is more specific and we will be happy to oblige.
Email: holiday.enquiries@nationaltrust.org.uk
Phone: 0344 8002070

Access for All at the National Trust

- The Access for All office works to improve access at all National Trust accommodation and properties. The office welcomes comments and ideas on improving access.
Phone: 01793 818531
Email: accessforall@nationaltrust.org.uk

February 2024