

## National Trust Cottages Accessibility Guide

Overhaven  
Pentireglaze  
Wadebridge  
Cornwall



Cottage Ref: 011034

### Introduction

- Overhaven is approximately two hundred metres from the main visitor hub for Pentire. Facilities which include a cafe with indoor and outdoor seating, parking for cars and bikes, disabled toilets, a changing room, and Trampler hire. There is guidance on local accessible trails for those using buggies, mobility scooters and wheelchairs. More details can be found at: [www.nationaltrust.org.uk/pentire](http://www.nationaltrust.org.uk/pentire) Click Facilities / Access
- Overhaven is part of a substantial farmhouse which has been converted into a holiday cottage. It retains many traditional features with sloping ceilings and low beams. It has an internal link into the adjoining Old Farmhouse for those wishing to mingle with friends or family in the neighbouring cottage.
- The cottage is on two floors.
- The cottage is heated by an air source heat pump system in conjunction with radiators. There is also an open fire in the sitting room and dual fuel radiators in the bathroom and shower room.
- In the event of power failure emergency lighting is provided in the downstairs hallway and on the stairs.

**The accommodation comprises the following:**

### Ground Floor

- Hall, utility room with WC, kitchen/dining room, large sitting room with door to terrace and garden. The thermostat for the air source heating is on the wall in the hall to the right of the utility room with the WC. This is at a height of 1460mm.

## First Floor

- Three bedrooms (one double with 5' bed, two doubles with 6' beds which can also be twins on request), a bathroom and a shower room both with a WC.

## Pre-Arrival

- See the main webpage for booking and location details.
- Please contact us prior to booking if you have any specific access requirements.
- Directions provided with booking.

## Approach

- The approach is via country lanes. The main entry to the site is at a crossroads opposite a campsite. It is the second right turn after the National Trust's Lundy Bay car park. The entrance road leads past the main visitor hub.

## Arrival & Parking Facilities

- Parking for two cars is in a car parking bay which is just above the cottage. The front door is approximately 15 metres from the car parking area.
- The car parking area is a rough, reasonably level, gravel surface with a relatively steep slope down to the cottage's gate.
- There is a flagstone path to the cottage door.
- The key safe is to the left of the front door at a height of 1550mm. It is operated by a combination lock mechanism, where the dials need to be turned to the cottage combination code. There is a sensor light above the door. A torch is recommended, especially if arriving in the dark, as the numbers on the lock can be difficult to see.



Car Parking Area



Walk from car parking area



Gate and path to the front door of Overhaven

### Getting in (and out) of the cottage

- There is a wooden threshold with step down into the cottage of 70mm.
- There is coir matting in the door well and a very small lip from mat onto flagstones.
- The clear opening width of the front door is 960mm.
- The light switch is on the right-hand side at a height of 1380mm.
- There is a French door from the sitting room with two steps down with a max height of 130mm to a small terrace area with lovely views across the fields to the sea.
- From the terrace there is arched doorway into to the front garden.



## Getting around the cottage

### Ground floor:

- Light switch for the hall is to the right of the front door at a height of 1360mm.
- There are various floor coverings ranging from stone in entrance hall, carpet in hallway, vinyl floor tiles in kitchen/dining room and utility room. Stone floor in sitting room with large scatter rug,
- The minimum internal door opening widths on ground floor are 850mm apart from the utility room which is 700mm.
- Door from hall to utility and WC.
- There is a low door into the kitchen with a head clearance of 5' 9" (1730mm).
- There are three steps down of 150mm into the kitchen from the hallway.
- There is no handrail for these steps.



Steps looking up from kitchen



Steps down to kitchen



Door from kitchen into sitting room with a wooden threshold.

- There is a slight dip of 30mm below the threshold where the flagstones are uneven.
- Low ceiling with beams in kitchen/dining room with a headroom clearance of 6' (1830mm).
- French door to terrace and front garden from sitting room. Two slates steps down, each at a depth of 130mm.
- Door to stairs.
- Stairs to first floor with 12 treads 180mm high and a wooden handrail.
- The stairs handrail is on the right-hand side at a height of 910mm from each tread.
- Two spotlights on ceiling beam in hall and a movement detector wall light on the stairs.
- Minimum width of stairs 700mm.

## First Floor

- Light switch on landing to the left at a height of 1330mm.
- In addition to regular light switches there is a movement detector at the top of the stairs which switches on lights automatically.
- Bedrooms and landing are carpeted with vinyl flooring in the bathroom and shower room.
- Stair gate at top of stairs is a built slot-in type which is kept in the cupboard in the sitting room.
- There is a step down into one of the double/twin bedrooms of 200mm.
- There is a small wooden threshold into the double bedroom of 20mm.
- There is a sloping ceiling in one of the double/ twin bedrooms with a low beam to one side of the room.
- There is level access into shower room.
- There is a small step with a height of 50mm, just before the bathroom door and then four steps down into bathroom.
- The clear door opening widths are 800mm.



View from top of stairs



Landing showing double bedroom door

## Ground Floor

### Kitchen:

- The kitchen is approached from the hall with three steps down, each step is a 150mm high.
- The light switch is on the left-hand side at a height of 1380mm.
- Table with five chairs without arms and one Windsor chair.
- Granite worktops with a height of 920mm from floor level.
- Ceramic sink with mixer taps and lever controls.
- Built in oven with separate grill and ceramic hob. The controls along the right-hand side.
- Cooker hood with light.
- Fridge freezer.
- Microwave, cordless kettle, and toaster.
- Integrated dishwasher.
- There are four ceiling spotlights along the beams
- Windowsill height 620mm.



## Dining area

- The light switch is to the left of the fridge freezer just above the worktop.
- Ceiling pendant light over dining table, with dimmer switch.
- Table with six chairs without arms.
- The table has knee clearance of 620mm.
- Chairs have a seat height of 470mm and a back height of 500mm.
- Window with views to the sea.
- Windowsill height 440mm.



## Sitting Room

- The light switch is on left hand side of the door at a height of 1360mm.
- Lighting comprises two five-arm ceiling pendants, 2 table lamps and one floor lamp.
- Open fire with a raised granite hearth off 100mm.
- French door with view over the countryside and towards the sea.
- Large, deep window with views over the countryside with the sea in the distance.
- There are two sofas, a two-seater, and a three-seater they have a seat height of 500mm and a back height of 600mm.
- One armchair with seat height of 470mm and a back height of 750mm.
- Large oval coffee table with a height of 550mm.
- Windowsill height 560mm.
- 32" TV with separate DVD.
- Portable Radio/CD.
- Step up to under stairs cupboard of 220mm.
- Small side table/desk with drawer 720mm high.
- Wooden chair 440mm seat height.
- Table lamp.

- Side table 630mm high with table lamp.
- French door to terrace.



## Utility room with WC

- The light switch on right hand side at a height of 1360mm.
- Ceiling bulkhead light.
- Worktop 920mm.
- The sink is 870mm high with twist taps.
- Washing machine and separate tumble dryer under the worktop.
- The WC has a seat height of 420mm.
- Window overlooking courtyard. Windowsill height 590mm.
- Heated towel rail.

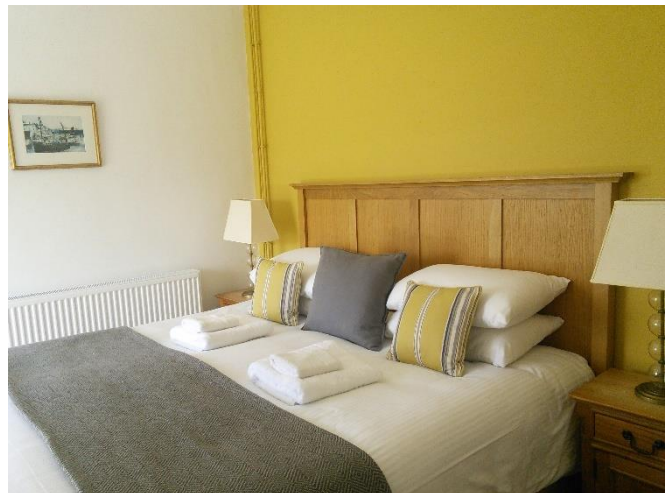




## First Floor

### Double Bedroom (or twin)

- Door from landing with a wooden threshold height of 20mm.
- The light switch is on the right-hand side at a height of 1360mm.
- Low window.
- The bed is in central position facing window with views over fields.
- Double bed 6'/1800mm wide, length of 2000mm and a height of 650mm.
- There is no clearance below the bed to the floor.
- The double bed can be a twin upon request.
- Two bedside cabinets with bedside lamps.
- Four drawer chest with table lamp.
- Built in wardrobe with a hanging rail at a height of 1700mm.
- Wall mirror.





## Double Bedroom

- Door from landing.
- The light switch is on the left-hand side of the door at a height of 1380mm.
- One ceiling pendant light with 5 shades.
- 5'/1500mm double bed.
- Bed is 2000mm long and has a height of 650mm.
- There is limited circulation space around bed with the narrowest gap being 270mm at one side and 400mm to the other.
- There is no clearance below the bed to the floor.
- Two bedside cabinets with table lamps.
- Coastal view from low side window.
- Built in wardrobe and cupboard hanging rail of 1600mm.
- Wooden Windsor chair seat and back height of 460mm.
- Four drawer Chest of drawers with mirror above.



### **Second Double Bedroom (or twin)**

- Door from landing and step down of 200mm into room.
- The light switch is on the right-hand side of the door at a height of 1380mm.
- Central pendant light.
- 6'1800mm double divan bed which can be twin upon request.
- Bed is 1900mm long and has a height of 670mm.
- The gap between the beds is 390mm, when made up as a twin.
- There is no clearance below the beds to the floor.
- Four drawer chest of drawers with mirror above.
- Two bedside cabinets with bedside lamps.
- There is an exposed, low beam and a sloping ceiling above bed.
- There is a low window which is 250mm from floor level.

- Built in cupboard with hanging rail at a height of 1700mm.



Step from landing into bedroom



Low window



Double made up as a twin

## Shower room

- Door from landing.
- The light pull cord is to the left of the door at a height of 1550mm.
- Central ceiling light.
- The quadrant shower cubicle has sliding doors with an opening width of 430mm.
- Shower with overhead shower head and separate head.
- Twist and lever shower controls at a height of 1050mm-1250mm.
- There is a step up into shower of 60mm.
- WC has a seat height of 440mm and a push flush.
- The hand basin is 850mm high with twist mixer taps.
- There is a mirror with integrated light above the hand basin.
- Shaver point to right of the mirror.
- Built-in cupboards behind WC.



## Bathroom

- Door from landing with lip of 50mm and then four steps down into down bathroom the steps are 190mm high.
- Pull cord for light is on the right-hand side at the top of the stairs at a height of 1150mm.
- Central globe ceiling light.
- Standard size bath with hand grips and handheld twist taps shower attachment.
- The bath has a height of 570mm.

- WC with lever flush and a seat height of 450mm.
- Hand basin with twist taps and a height of 840mm.
- Mirror with integrated light over hand basin.
- Shaver point to right of the mirror.
- Pull cord for heated towel rail at the foot of the steps at a height of 1350mm.
- Windowsill height 480mm.



Steps down into bathroom



## Garden

- Small terrace, which is not enclosed.
- Wooden table knee clearance of 600mm.
- Six Wooden chairs with seat heights of 440mm. Two with arms and a back height of 500mm and four chairs with back height of 530mm.
- Level front garden which is only secure if gates to the adjoining property are kept shut.



Terrace



Shared front garden

## Additional Information

- Assistance dogs are welcome at all our cottages.



- In the event of a fire, it is the responsibility of the guests to evacuate themselves. Vibrating fire/smoke detectors are available if requested at time of booking. Please contact us if you have any other specific access requirements in this respect.
- Mobile phone signal is not reliable in the cottage but usually some signal can be found in the car parking area.
- When the Property Office near Overhaven or the Visitor Centre Hub is open, which is across the road from Overhaven access to a telephone may be available for emergencies.
- Carpets are 80/20 wool/man-manufactured fibres.
- Duvets and pillows are made of hollowfibre.
- Cushions are hollowfibre.

## Facilities at all cottages

In addition to the standard equipment and facilities, each cottage is equipped with the following:

- Chair with armrests in Overhaven sitting room.
- Good reading light.
- Non-slip mat for bath/shower.
- Information in alternative formats (on request).

We aim to provide these items in all cottages but please check when booking as to their availability and to check if new items have been added to the list.

In Overhaven, please pre-request a large handle vegetable peeler and an easy jar opener.

## Specialist equipment

Other specialist equipment such as wheelchairs, bath seats, toilet frames etc may be available for loan or purchase from the local Red Cross loan centre. Please check this out before booking the Cottage and contact us if you require further information.

<https://www.redcross.org.uk/get-help/borrow-a-wheelchair>

<https://www.redcross.org.uk/get-help/hire-a-toilet-aid>

## Future Plans to improve Access to National Trust Holiday Cottages

- We are currently in the process of writing accessibility guides for all our holiday cottages and improving access over time for all our guests. All feedback is very helpful in informing us of ways in which we can improve access to all our cottages. We welcome any comments or ideas from you about access at this cottage and thank you for taking the time to do this. Please do this in the most convenient way for you. See contact details below or information on website.

## About the Accessibility Guide

- This Accessibility Guide is intended to provide key information about the cottage that may be particularly relevant to guests with disabilities. Please contact us prior to booking if you would like information that is more specific, and we will be happy to oblige.

Email: [holiday.enquiries@nationaltrust.org.uk](mailto:holiday.enquiries@nationaltrust.org.uk)

Phone: 0344 800 2070



## Access for All at the National Trust

- The Access for All office works to improve access at all National Trust cottages and properties. The office welcomes comments and ideas on improving access.

Phone: 01793 818531

Email: [accessforall@nationaltrust.org.uk](mailto:accessforall@nationaltrust.org.uk)

November 2022